

FED. ROAD DIV. NO.	STATE	PROJECT NO.	COUNTY	CONTROL SECTION	STATE ROUTE	SHEET NO.	TOTAL SHEETS
7	NEVADA	I-015-1 (22) 40	CLARK	03-083		65	130

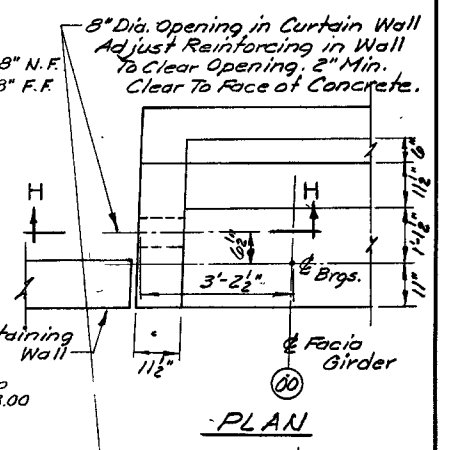
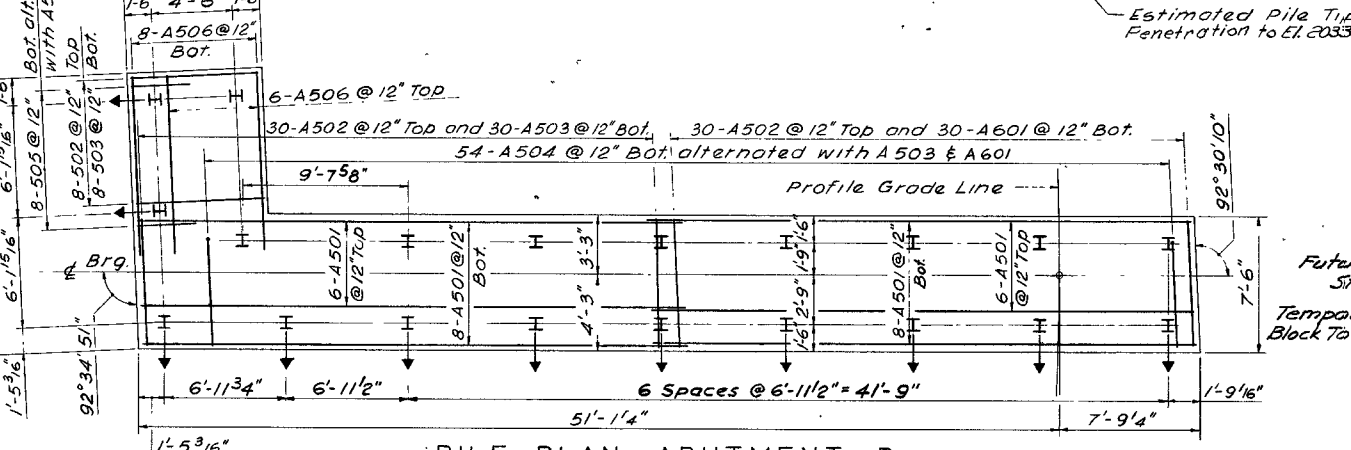
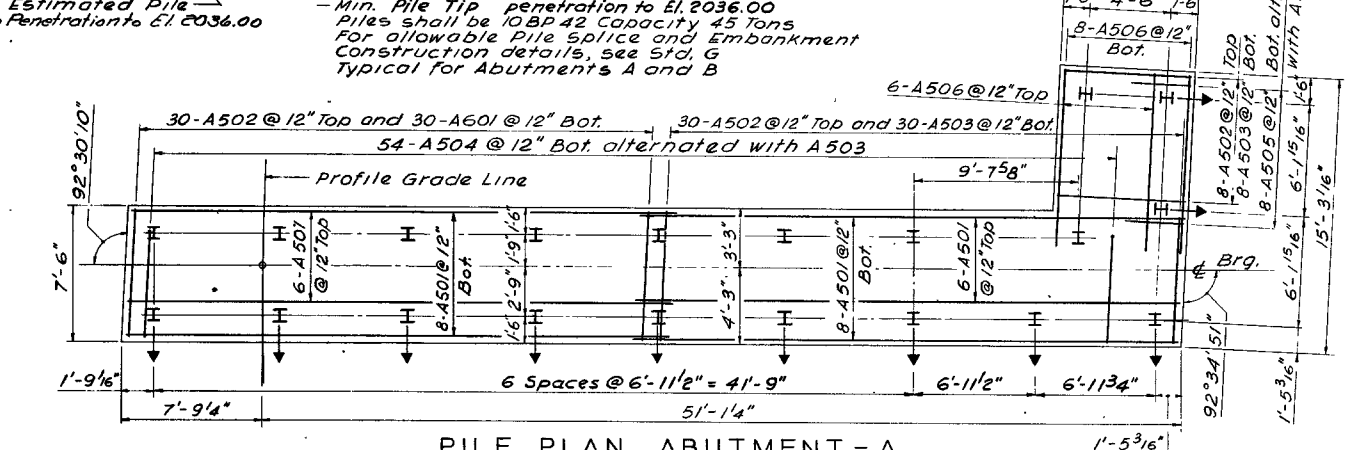
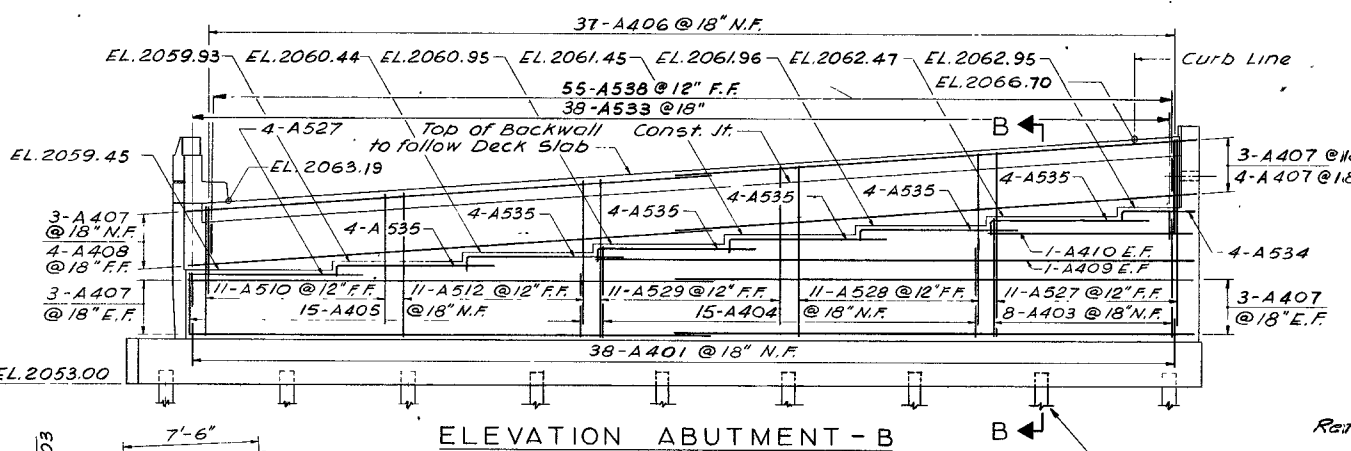
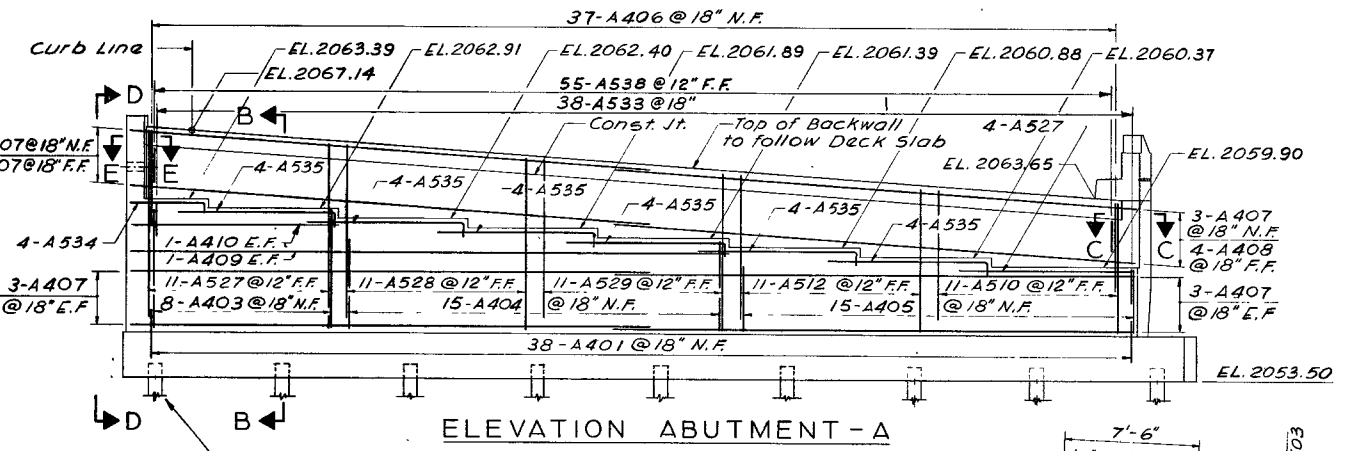
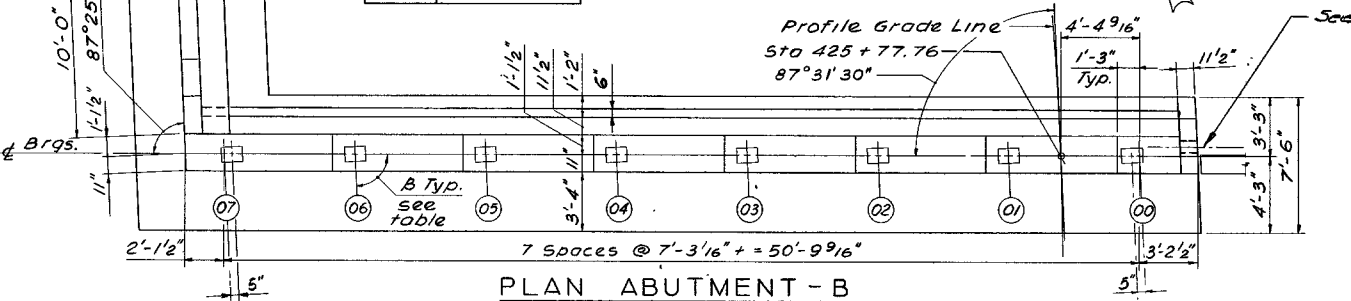
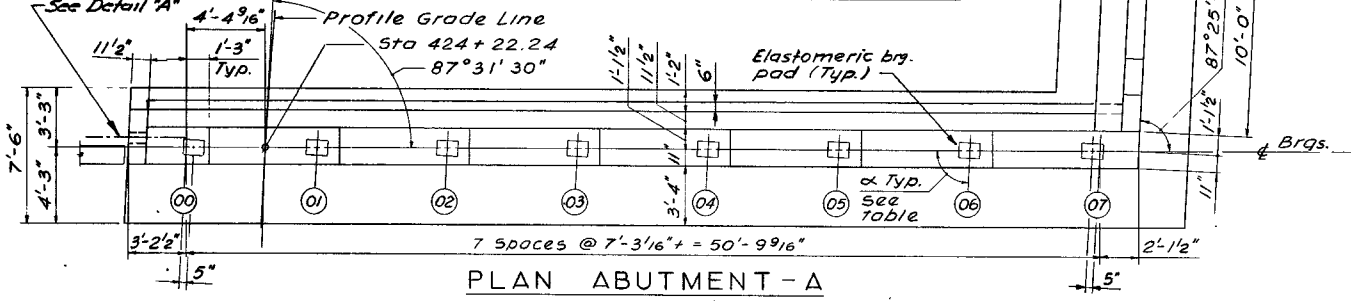
Ref. Sht. WA-4

**Abutment - A**

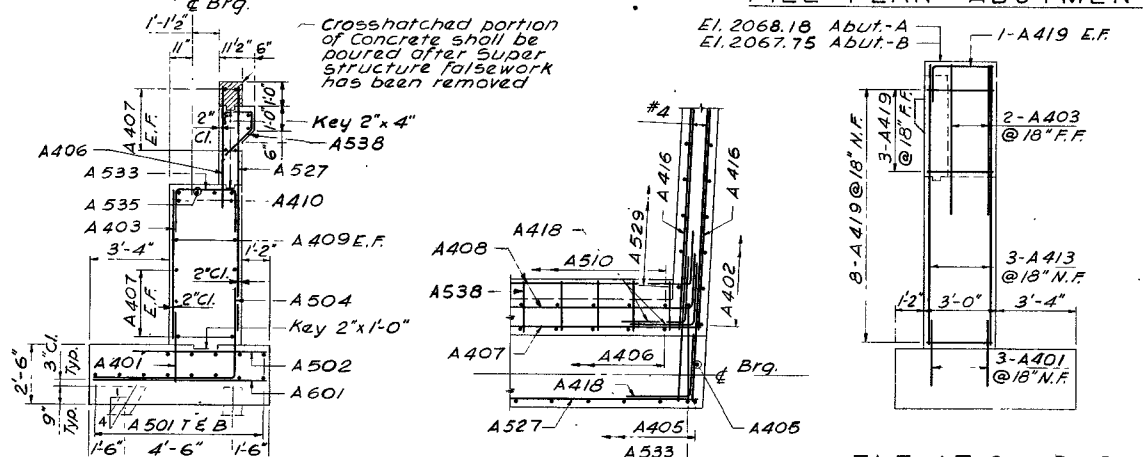
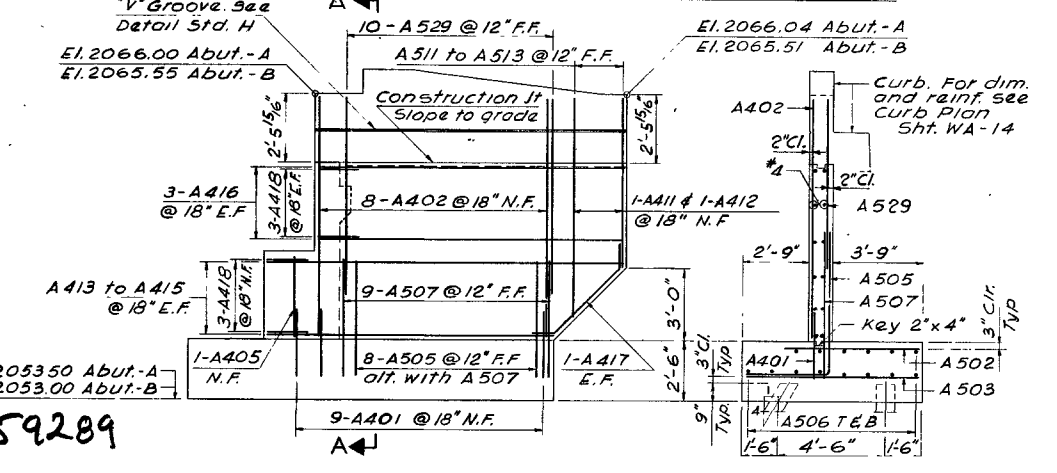
Girder	$\alpha$
00	87° 31' 51"
01	87° 31' 15"
02	87° 30' 39"
03	87° 30' 02"
04	87° 29' 25"
05	87° 28' 47"
06	87° 28' 10"
07	87° 27' 31"

**Abutment - B**

Girder	$\beta$
00	87° 31' 51"
01	87° 31' 15"
02	87° 30' 39"
03	87° 30' 02"
04	87° 29' 25"
05	87° 28' 47"
06	87° 28' 10"
07	87° 27' 31"



DETAIL "A"  
(Abutment B Opposite Hand)



Notes  
Wingwall Elevation, Sections C-C, E-E and Elevation D-D are for Abutment-A. Similar Sections and Elevations, taken at same location in Abutment-B, are applicable to Abutment-B but opposite hand.  
⊥ Denotes battered pile

107V 3834

STATE OF NEVADA  
DEPARTMENT OF HIGHWAYS 55

WALL STREET OVERPASS  
I-1042N & I-1042S  
ABUTMENTS A AND B

DE LEUW, CATHAR & COMPANY ENGINEERS  
SCALE: DESIGNED BY P.K.F. DRAWN BY J.A.N.

59289