

STANDARD SHEETS	SHEET	REF. SH.	CONTRACT PLAN SHEET
Details (Sheets 1 & 2)	1-2		Title Sheet
Details Structure Exc & Backfill Method of Measurement (Sheets 1 thru 4)	4-8	A-1	Location Sketch
RCP End Sections	9-11	B-1-3	Typical Sections & Construction Details
Type 1 & 2 Drop Inlets	12-12A	B-5-6	Summary of Pavement Quantities
Type 3 Drop Inlet (Sheet 1)	13-19	C-1-7	Estimate of Quantities
Type 4, 5 & 6 Drop Inlets	20-23	D-1-4	Geometrics, Horizontal & Vertical Control Plans
Type 7 & 8 Drop Inlets	24	E-1	Clearing, Fencing & Existing Facilities Plans
Type 1, 2, 3 & 4 Manholes	25-48	E-2-25	Deleted
Box Culverts (Sheets 1, 2 & 7)	49-57	F-1-9	Paving & Drainage Plans
Methods of Extending Culverts	58-60	G-1-3	Profiles
Fence Details (Sheets 1 & 3)	61-63	H-1-3	Paving Detail Plans
Guardrail & Cable End Anchor & S.I.1	64-79	CH-1-16	Drainage Plans
Guardrail Installation R.S.1.2 & R.S.1.3	80-90	GA-1-11	Structure Nos I-934 N & S Charleston Blvd. Overpass
Metal Beam Barrier Rail	91	287S-1	Structure Nos H-935 N & S Cass Ave. Overpass
Ground Mounted Sign Supports (Sheets 1 thru 5)	92	1E-1	Structure Nos G-936 N & S Track 287 Overpass
Location for Erection of Highway & Construction Signs (Sheets 1 & 2)	93	SMU-1	Structure Nos I-937 N & S Interstate Over Expressway
Construction Signs Identification	94	DS-1	Structure Nos I-938 N & S Ramp SW Under Interstate
Route Markers Barricades & Construction Sign Installations	96	SMO-1	Structure No. I-939 Ramp ES Over Expressway
Highway Signs (Regulatory)	99-105	WA-1	Structure Nos G-941 N & S Track 213 Overpass
Highway Signs (Warning) Sheets 1 thru 3	106-123	WA-1	Structure No. H-946 F Street Overpass
Permanent Signs (Information & Guide Signs) (Sheets 1 & 2)	124-131	WA-1	Structure Nos I-1042 N & S Wall Street Overpass
Overhead Sign Details (Sheets 1 thru 14)	132-142	N-1-11	Standard Bridge Details
Concrete Paving Details			Signaling
Lighting & Signaling			Lighting & Signaling
Structure Lists			Structure Lists

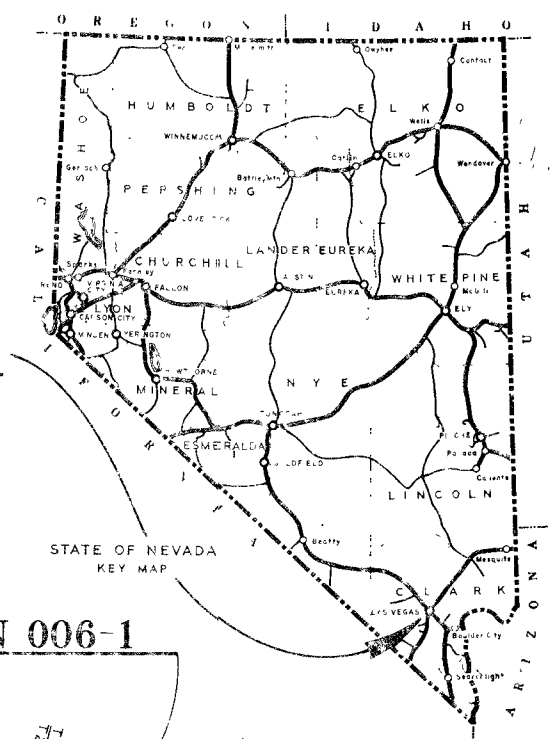
DESIGN DESIGNATION

ADT (1968) = New Facility  
 ADT (1988) = 145,000  
 DHV = 7.6 %  
 D = 56.0 %  
 T = 2.0 %

FED. ROAD DIST. NO.	STATE	PROJECT NO.	COUNTY	CONTROL SECTION	STATE ROUTE	SHEET NO.	TOTAL SHEETS
7	NEVADA	F-006-1(23)	CLARK	03-065		2	

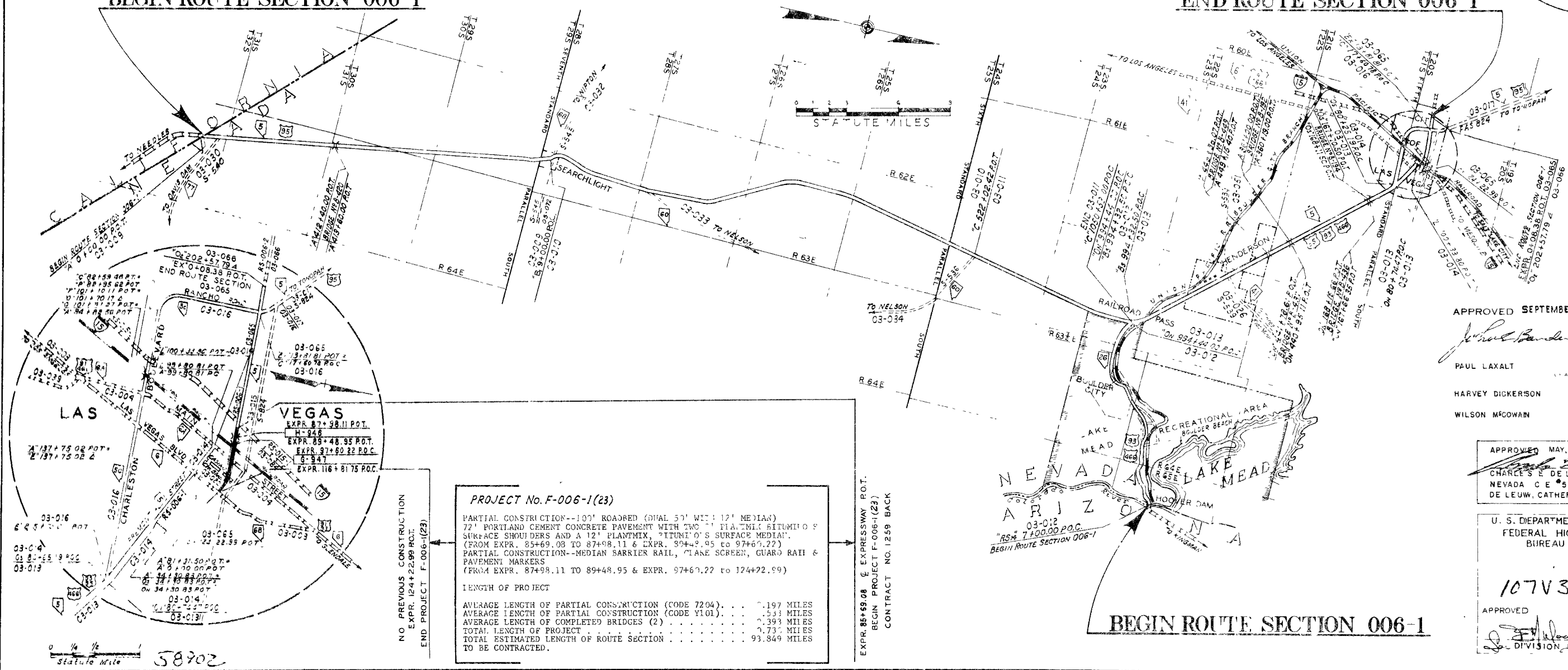
STATE OF NEVADA  
 DEPARTMENT OF HIGHWAYS

PLAN AND PROFILE OF PROPOSED  
 STATE HIGHWAY  
 CLARK COUNTY  
 PROJECT F-006-1 (23)  
 CALIF.-NEV. STATE LINE (SOUTH OF SEARCHLIGHT)  
 TO LAS VEGAS, AND ARIZ.-NEV. STATE  
 LINE (HOOVER DAM) TO RAILROAD PASS



BEGIN ROUTE SECTION 006-1

END ROUTE SECTION 006-1



PROJECT No. F-006-1(23)

PARTIAL CONSTRUCTION--100' ROADBED (DUAL 50' WITH 12' MEDIAN) 72" PORTLAND CEMENT CONCRETE PAVEMENT WITH TWO 4" PLANT MIX BITUMINOUS SURFACE SHOULDERS AND A 12" PLANT MIX BITUMINOUS SURFACE MEDIAN. (FROM EXPR. 85+69.08 TO 87+98.11 & EXPR. 92+49.95 TO 97+67.22)

PARTIAL CONSTRUCTION--MEDIAN BARRIER RAIL, TAKE SCREEN, GUARD RAIL & PAVEMENT MARKERS (FROM EXPR. 87+98.11 TO 89+48.95 & EXPR. 97+67.22 TO 124+72.99)

LENGTH OF PROJECT

AVERAGE LENGTH OF PARTIAL CONSTRUCTION (CODE 7204)	7.197 MILES
AVERAGE LENGTH OF PARTIAL CONSTRUCTION (CODE Y101)	5.533 MILES
AVERAGE LENGTH OF COMPLETED BRIDGES (2)	2.393 MILES
TOTAL LENGTH OF PROJECT	5.533 MILES
TOTAL ESTIMATED LENGTH OF ROUTE SECTION	93.849 MILES TO BE CONTRACTED.

APPROVED SEPTEMBER 23 1968.

*John Banda* STATE HIGHWAY ENGR.

PAUL LAXALT  
 HARVEY DICKERSON  
 WILSON MCOWAN

BOARD OF DIRECTORS

APPROVED MAY 28 1963

*Charles E. de Leuw*  
 CHARLES E. DE LEUW  
 NEVADA C.E. 526  
 DE LEUW, CATHER & COMPANY

U. S. DEPARTMENT OF TRANSPORTATION  
 FEDERAL HIGHWAY ADMINISTRATION  
 BUREAU OF PUBLIC ROADS

107V3833

APPROVED *[Signature]*  
 DIVISION ENGINEER DATE

Scale 1/4" = 1/2" Mile 58902