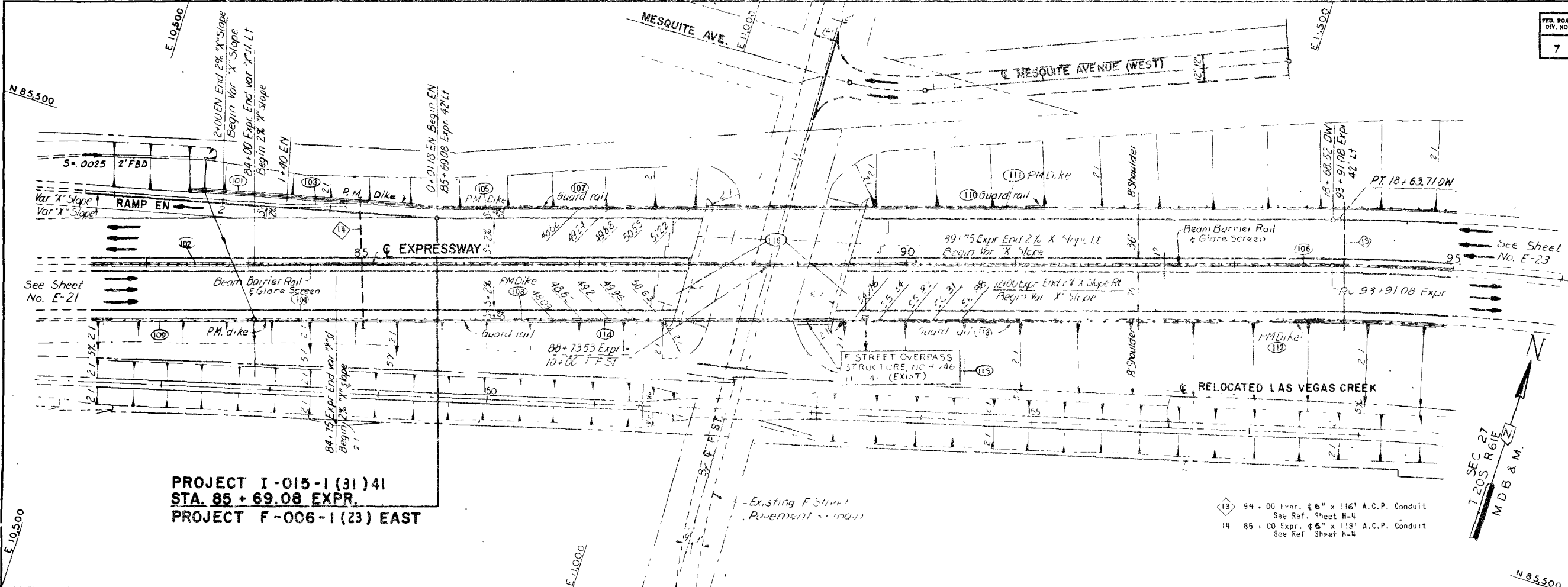


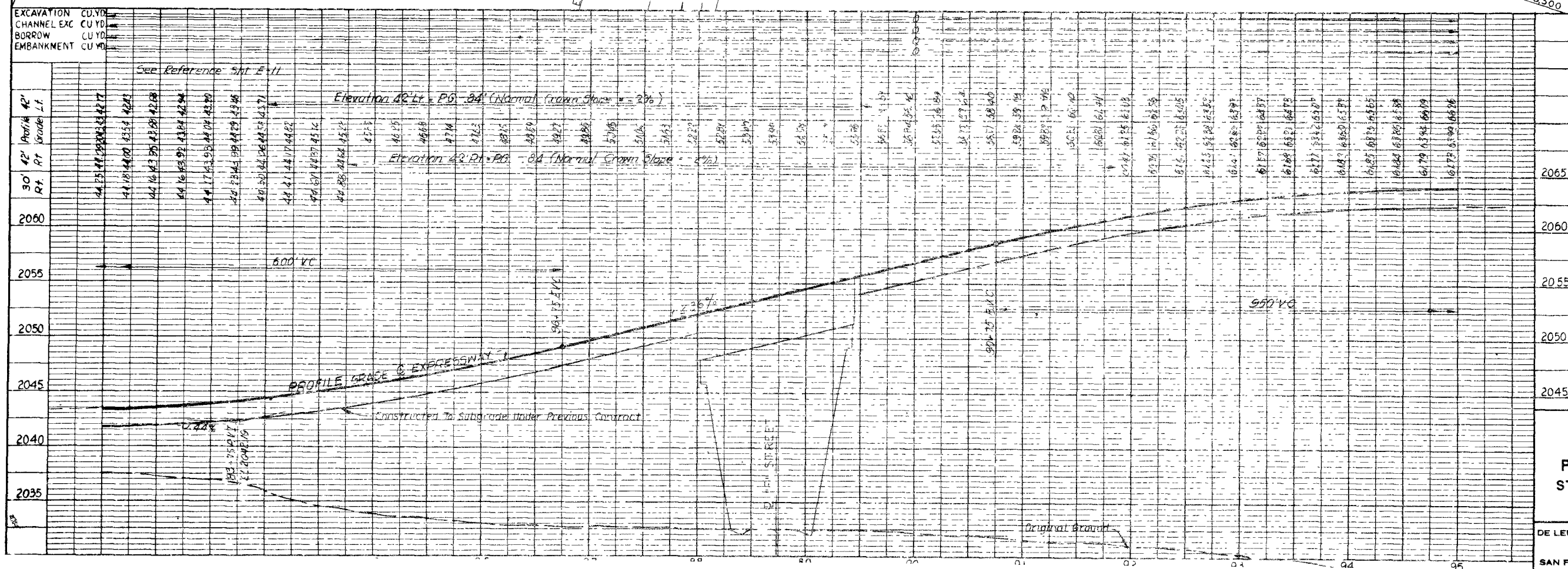
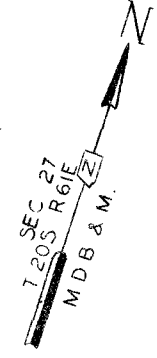
| | | | | | | | |
|---------------------|--------|------------------------------|--------|-----------------|------------------|--------------------|--------------|
| FED. ROAD DIST. NO. | STATE | PROJECT NO. | COUNTY | CONTROL SECTION | STATE ROUTE | SHEET NO. | TOTAL SHEETS |
| 7 | NEVADA | F-015-1(31)41 F-006-1(23) | CLARK | | 03-083 03-065 | 45 REF. SH. NO. | E-22 |

| | |
|-----------------------------|----|
| DATE | BY |
| | |
| SURVEYED | |
| PLOTTED | |
| GRADES CHECKED | |
| STRUCTURE NOTATIONS CHECKED | |
| NO. | |



PROJECT I-015-1(31)41
STA. 85+69.08 EXPR.
PROJECT F-006-1(23) EAST

13 94+00 Tvr. #6" x 116' A.C.P. Conduit
See Ref. Sheet H-4
14 85+00 Expr. #6" x 118' A.C.P. Conduit
See Ref. Sheet H-4



- 101 0+01 to 2+30 EM Rt., P.M. Dike
- 102 82+50 to 85+69 Expr., Double Metal Beam Barrier Rail & Headlight Glare Screen.
- 103 0+85 to 2+25 EM Rt., Scored Concrete Shoulder Strip
- 104 80+95 to 85+69 Expr. Rt., P.M. Dike
- 105 85+69 to 88+01 Expr. Lt., P.M. Dike
- 106 85+69 to 95+00 Expr., Double Metal Beam Barrier Rail & Headlight Glare Screen.
- 107 86+01 to 88+03 Expr. Lt., Guard Rail
- 108 85+69 to 87+72 Expr. Rt., P.M. Dike
- 109 82+50 to 85+69 Expr. Rt., Guard Rail
- 110 89+78 to 95+00 Expr. Lt., Guard Rail
- 111 89+78 to 91+25 Expr. Lt., P.M. Dike
- 112 89+46 to 95+00 Expr. Rt., P.M. Dike
- 113 89+44 to 95+00 Expr. Rt., Guard Rail
- 114 85+69 to 91+74 Expr. Rt., Guard Rail
- 115 F St Overpass, Fine Surface Finish
- 116 F St. Overpass- Reinf. Structure- Approaches. See Sheet No. F5-1

107V3833

STATE OF NEVADA
DEPARTMENT OF HIGHWAYS
PAVING AND DRAINAGE PLANS
STA. 82+50 TO 95+00 EXPRESSWAY
DOWNTOWN EXPRESSWAY
LAS VEGAS

DE LEUW, CATHER & COMPANY
ENGINEERS
SAN FRANCISCO, CALIFORNIA

SCALE
DESIGNED BY: JWB
DRAWN BY: IK
CHECKED BY: FV & GM
APPROVED BY: JBL

58945