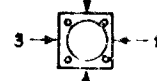


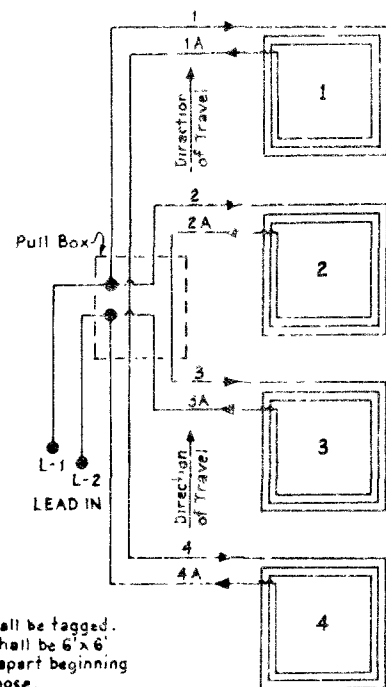
POLE SCHEDULE

No	POLE		SIGNALS			REMARKS
	Type	Mast Arm & Lum Location	Type	Mounting	Location	
A	III	2	1W3C 1W3C	M-2 B-1	Mast Arm	#A Green for Northbound shall be 12" Green Up Arrow.
B	1-A	-	3W3C	A-5	Top	
C	III	4	1W3C 2W3C	M-2 F-2	Mast Arm	
D	1-A	-	2W3C	A-4	Top	
E	1-A	-	1W3C	A-2	Top	

Note: All mast arm signals shall have 12" sections.



POLE LOCATIONS (Top View)



NOTES:

- (a) All leads shall be tagged.
- (b) The loops shall be 6' x 6' and 6 feet apart beginning at median nose.
- (c) Loop conductors for any one lane of travel shall be wound in the same direction.

DETECTOR LOOPS (6' x 6')

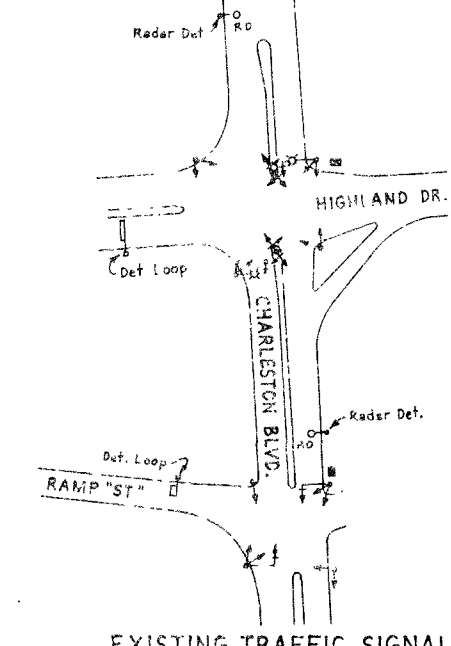
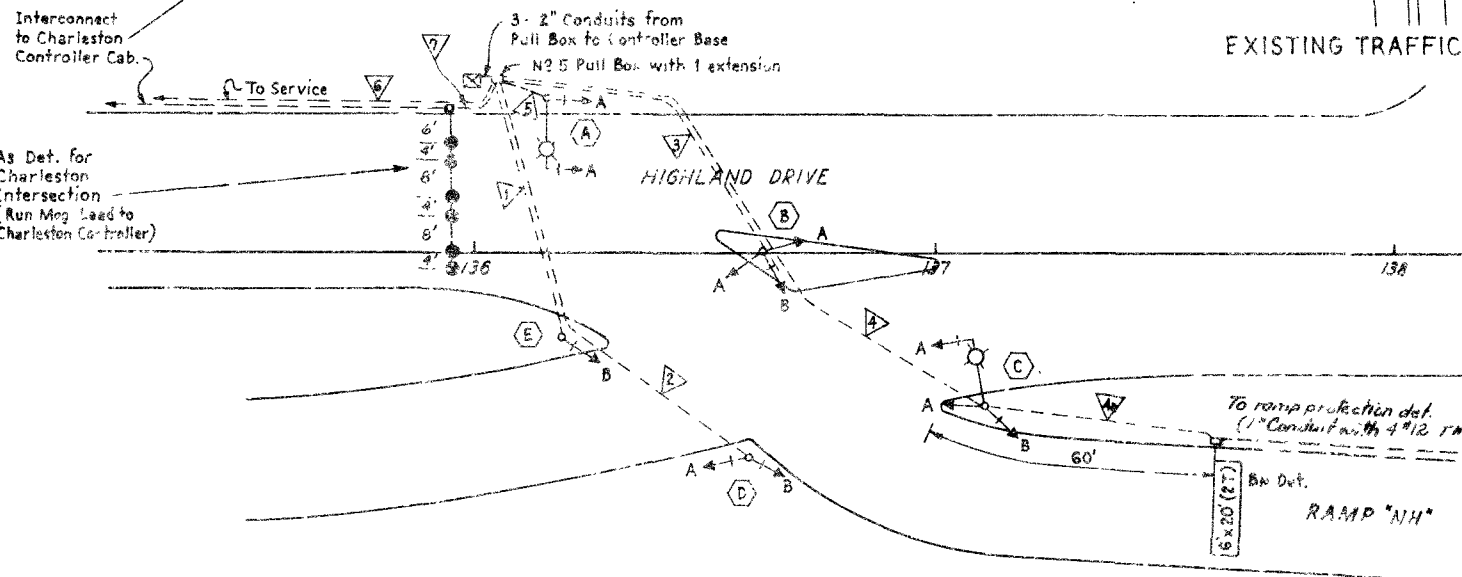
CONDUIT-CONDUCTOR SCHEDULE

Run No	From	To	Conduit Size	#A	#B	Sig. Con.	Spare	#B Det.	Lighting	Inter-connect	Service	Remarks	RAMP PROT. DET.
1	Controller	Pole E	1 1/4"		3	1	8					Signal Cable	
2	Controller	Pole D	1 1/4"	3	3	1	5					Sig. Cable	
3	Controller	Pole B	1 1/4"	3	3	1	5					Sig. Cable	
4	Controller	Pole C	1 1/4"	3	3	1	3	2	2			Sig. Cable, Lighting Cir. and Det. Lead	4
4A	Pole C	Det Pull Box	1"					2				Detector Leads	4
5	Controller	Service	1 1/4"	3		1	8		2			Signal Cable and Lighting Circuit	
6	Controller	Service	1 1/4"								4	Service, Lighting and Signals	
7	Controller (Highland)	Controller (Charleston)	1 1/4"							1		Interconnect Cable	

Note: Signal Cable shall be No 14, 12 conductor cable (IMSA Spec. 19-1 or 20-1).
 Interconnect Cable shall be No 14, 12 conductor cable (IMSA Spec. 19-1 or 20-1).
 Lighting circuit conductors shall be single conductor No 12 THW.
 Loop Detector Leads (Pull Box to Controller) shall be No 12, 2-conductor u.f. cable.
 Service shall be two single conductor No 6 THW for signals and two single-conductor No 8 THW for lighting.

52003
52031

- BN Detector Repeat. 2
- Coordination, Yellow Pulse. 1
- Coordination, Yield. 1
- Coordination, Common. 1
- Ramp Protection Det. 2
- #B Red from Highland. 1
- #A Det. Cable. 2



EXISTING TRAFFIC SIGNALS

FED. ROAD DIST. NO.	STATE	PROJECT NO.	COUNTY	CONTROL SECTION	STATE ROUTE	SHEET NO.	TOTAL SHEETS
7	NEVADA	T-015 (131) 41	CLARK	03-083		131	

Ref. Sheet No. K-8

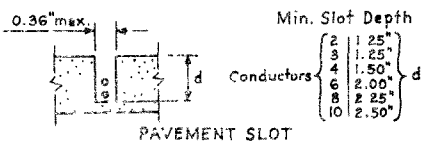
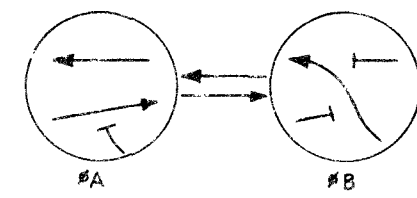
GENERAL NOTES

- Signal Poles shall be 3'-0" clear of the curb face. Signal poles on medians or islands shall be 10'-0" back of nose.
- Luminaires (this sheet) shall have individual built-in photoelectric control. The controller cabinet shall have 10A in-line fuse holders (weatherproof) for the lighting circuit. Lighting circuit to be 120vac.
- The routing and termination of conduit and detector loops shall be as indicated on the plans unless otherwise directed by the Resident Engineer.
- Flashing operation shall be Red on #B and Yellow on #A.
- Detector loop leads shall be spliced in the adjacent #3 1/2 pull box by means of approved epoxy splice kits.
- Detector Loops shall be placed in the center of their appropriate lane(s).
- The controller, related equipment and cabinet shall be relocated from the intersection of Charleston Blvd. and Ramp "ST". The Contractor shall provide and install a transformer type base for the controller pedestal. See Spec. Prov. for equipment.
- The Contractor shall stockpile on the job site all existing traffic signal equipment from Charleston and Ramp "ST" (except the controller cabinet and equipment within cabinet) for removal by State forces.
- A time switch with a 10-hour reserve to ground yield circuit during free operation shall be provided in controller cabinet.

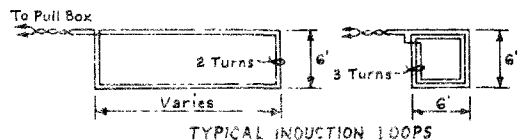
LEGEND

- 400 w. Mercury Vapor Intersection Luminaire (IES Type III)
- Mast Arm Signal with Louvered Backplate
- Signal Head
- Signal Head with Backplate
- Detector Loop
- Magnetometer Detectors
- Pull Box
- Controller Cabinet (Door to be on street side)
- Conduit

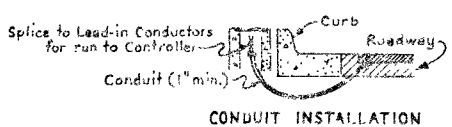
PHASE DIAGRAM



PAVEMENT SLOT

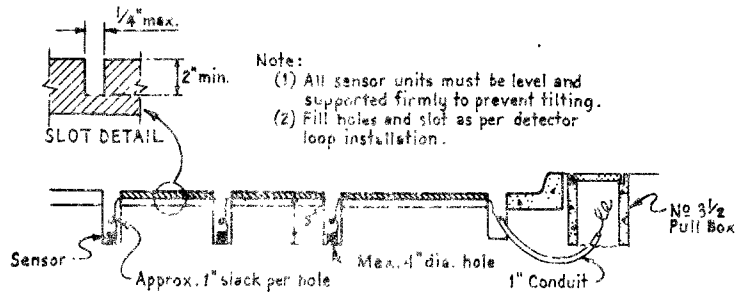


TYPICAL INDUCTION LOOPS

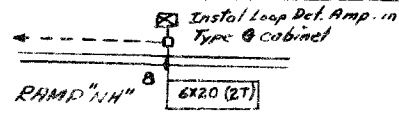


CONDUIT INSTALLATION

DETECTOR LOOP INSTALLATION



MAGNETOMETER INSTALLATION



RAMP PROTECTION DETECTOR

167U3833
 131 STATE OF NEVADA DEPARTMENT OF HIGHWAYS
 TRAFFIC SIGNALS
 HIGHLAND DR. & RAMP "NH"