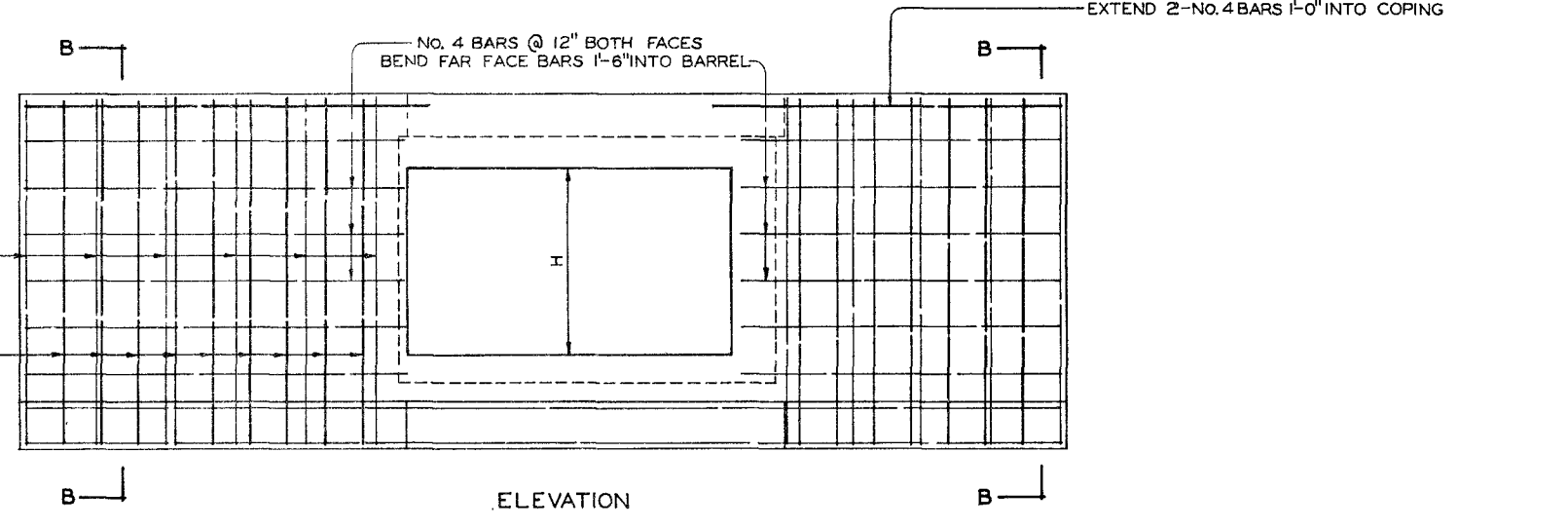
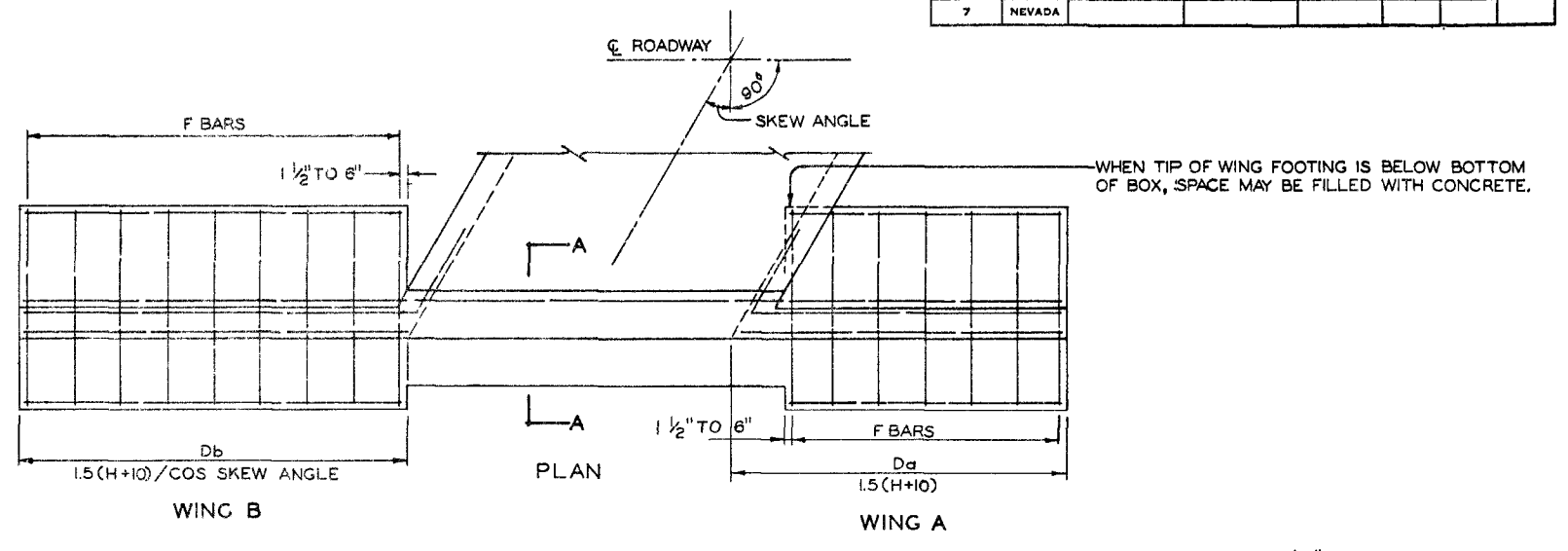


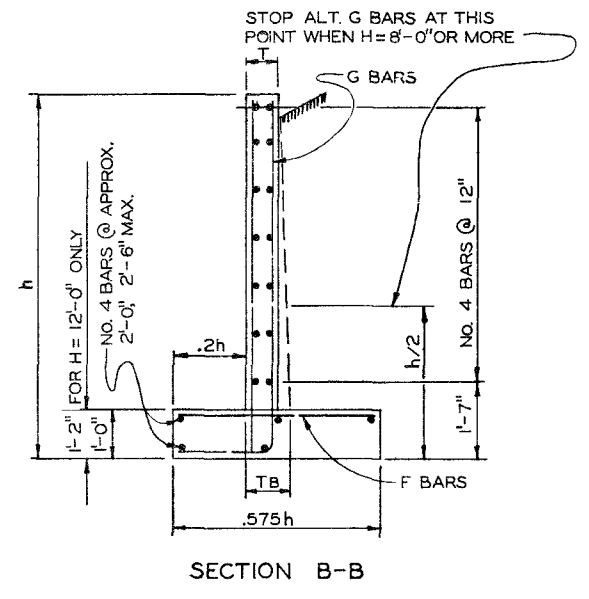
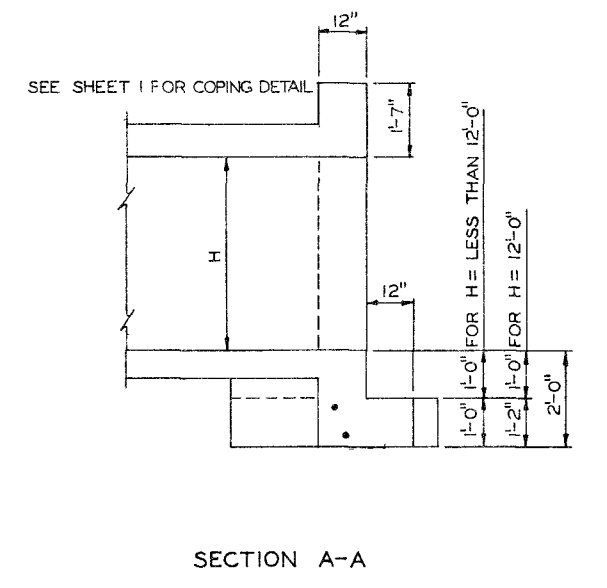
CUBIC YARDS OF CONCRETE AND POUNDS OF REINFORCING FOR TWO TYPE II HEADWALLS

SPAN	HEIGHT	SINGLE BOX				DOUBLE BOX				TRIPLE BOX							
		0° SKEW		15° SKEW		0° SKEW		15° SKEW		0° SKEW		15° SKEW		0° SKEW		15° SKEW	
		CONC.	REINF.	CONC.	REINF.	CONC.	REINF.	CONC.	REINF.	CONC.	REINF.	CONC.	REINF.	CONC.	REINF.	CONC.	REINF.
4	4	10.3	1050	10.4	1130	11.0	1260	12.5	1450	11.5	1280	11.6	1340	12.2	1530	14.2	1825
5	5	14.6	1610	14.9	1705	15.8	1815	17.8	2100	16.0	1745	16.3	1910	17.4	2160	19.8	2555
6	6	10.5	1075	10.6	1210	11.3	1315	12.8	1585	11.9	1230	12.1	1525	12.7	1720	14.8	2120
7	7	14.9	1635	15.1	1790	16.0	1905	18.2	2255	16.5	1810	16.8	2120	17.9	2245	20.5	2425
8	8	20.4	2450	20.7	2615	22.1	2845	24.9	3250	22.2	2640	22.6	2920	24.2	3220	27.5	3825
9	9	29.0	3490							24.0	2730	24.5	3230	26.3	3600	30.0	4400
10	10	10.7	1100	10.8	1245	11.5	1450	13.1	1715	12.4	1280	12.5	1600	13.4	1940	15.4	2285
11	11	15.1	1660	15.4	1840	16.3	2020	18.5	2420	17.0	1865	17.3	2200	18.5	2520	21.2	3140
12	12	20.6	2480	21.0	2650	22.4	3470	25.3	3420	22.7	2705	23.2	2985	24.8	3970	28.2	4150
13	13	29.3	3520	29.8	3680	31.6	4085	36.0	4760	31.8	3780	32.5	4025	34.6	4695	39.6	5565
14	14	11.0	1130	11.1	1275	11.8	1580	13.4	1905	12.8	1345	13.0	1705	14.0	2350	16.0	2705
15	15	15.4	1690	15.6	1890	16.6	2160	18.9	2560	17.4	1930	17.8	2285	19.1	2805	21.9	3455
16	16	20.9	2515	21.3	2725	22.7	3130	25.7	3600	23.3	2775	23.8	3065	25.5	3750	29.0	4465
17	17	29.7	3560	30.2	3760	32.0	4240	36.4	4885	32.6	3865	33.2	4165	35.4	4915	40.6	5885
18	18	36.9	4705	37.9	4840	40.2	5350	45.3	6180	39.9	5015	40.9	5285	43.6	6110	49.5	7155
19	19	11.4	1245	11.4	1590	12.2	2005	13.9	2460	13.8	1470	13.8	2070	14.9	2785	17.2	3680
20	20	15.7	1845	16.0	2165	17.1	2555	19.4	3255	18.0	2650	18.8	2610	20.2	3275	23.2	4370
21	21	21.5	2715	21.8	2915	23.3	3795	26.3	4315	24.4	2910	24.8	3400	26.7	4190	30.5	5440
22	22	30.3	3805	30.8	4120	32.7	4885	37.3	5740	33.9	4030	34.6	4520	36.9	5425	42.4	6970
23	23	37.6	4985	38.6	5375	41.0	6030	46.3	6960	41.2	5200	42.3	5695	45.1	6325	51.4	8160
24	24	47.4	6660	48.4	7090	51.4	7770	57.5	8970					44.8	5420	46.0	6020
25	25	57.1	8345	58.3	8805	61.9	9505	68.7	10970	60.7	8495	62.0	9480	66.1	10450	73.8	12235
26	26	11.9	1330	11.8	1895	12.6	2475	14.3	3285	14.7	1570	14.7	2295	15.9	3410	18.4	4465
27	27	16.1	1945	16.5	2450	17.6	3230	20.0	4160	18.9	2180	19.8	2815	21.3	3990	24.6	5270
28	28	22.0	2810	22.2	3300	23.8	4200	26.9	5265	25.5	3035	26.0	3720	27.9	4700	32.0	6255
29	29	31.0	3910	31.5	4340	33.4	5370	38.1	6635	35.3	4155	36.0	4755	38.5	5125	44.3	7845
30	30	38.3	5115	39.1	5905	41.6	6850	47.1	8060	42.6	5305	43.7	6000	46.7	7225	53.3	8550
31	31	48.0	6970	49.0	7690	52.0	8580	58.8	9950	52.3	7040	53.5	7870	57.1	9160	64.5	10920
32	32	57.8	8610	58.8	9465	62.5	10305	70.5	11830	62.1	8765	63.4	9810	67.6	11090	75.7	12980
33	33	88.0	12730	89.6	13710	95.2	15145	107.0	17265	92.6	13060	94.3	14020	100.3	15745	132.2	18190
34	34																

FED. ROAD DIV. NO.	STATE	PROJECT NO.	COUNTY	CONTROL SECTION	STATE ROUTE	SHEET NO.	TOTAL SHEETS
7	NEVADA						



H ₁ FEET	T-INCHES	TB-INCHES	G BARS		F BARS	
			SIZE NO.	SPACE IN.	SIZE NO.	SPACE IN.
4	8	8	5	9 1/2	4	12
6	9	9	5	9 1/2	4	11
8	10	10	7	10	4	6 1/2
10	12	12	7	8 1/2	5	7 1/2
12	13	13	7	6 1/2	6	8
14	14	14	7	7	6	7 1/2
16	16	16	8	6 1/2	8	10
18	20	20	9	7	8	8 1/2



NOTE: FOR GENERAL NOTES SEE SHEET I.

58057
58059

107V3833

157

STATE OF NEVADA
DEPARTMENT OF HIGHWAYS

STANDARD

R.C.B. CULVERTS (66)

TYPE II HEADWALLS

APPROVED BY: [Signature]