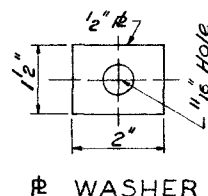
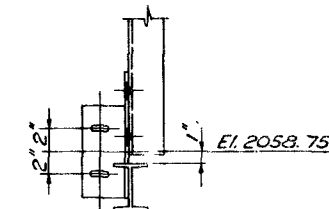
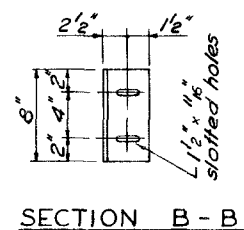
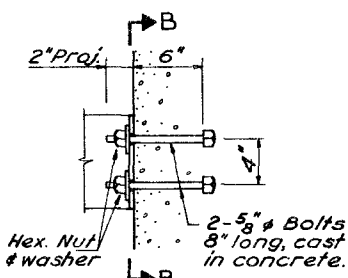
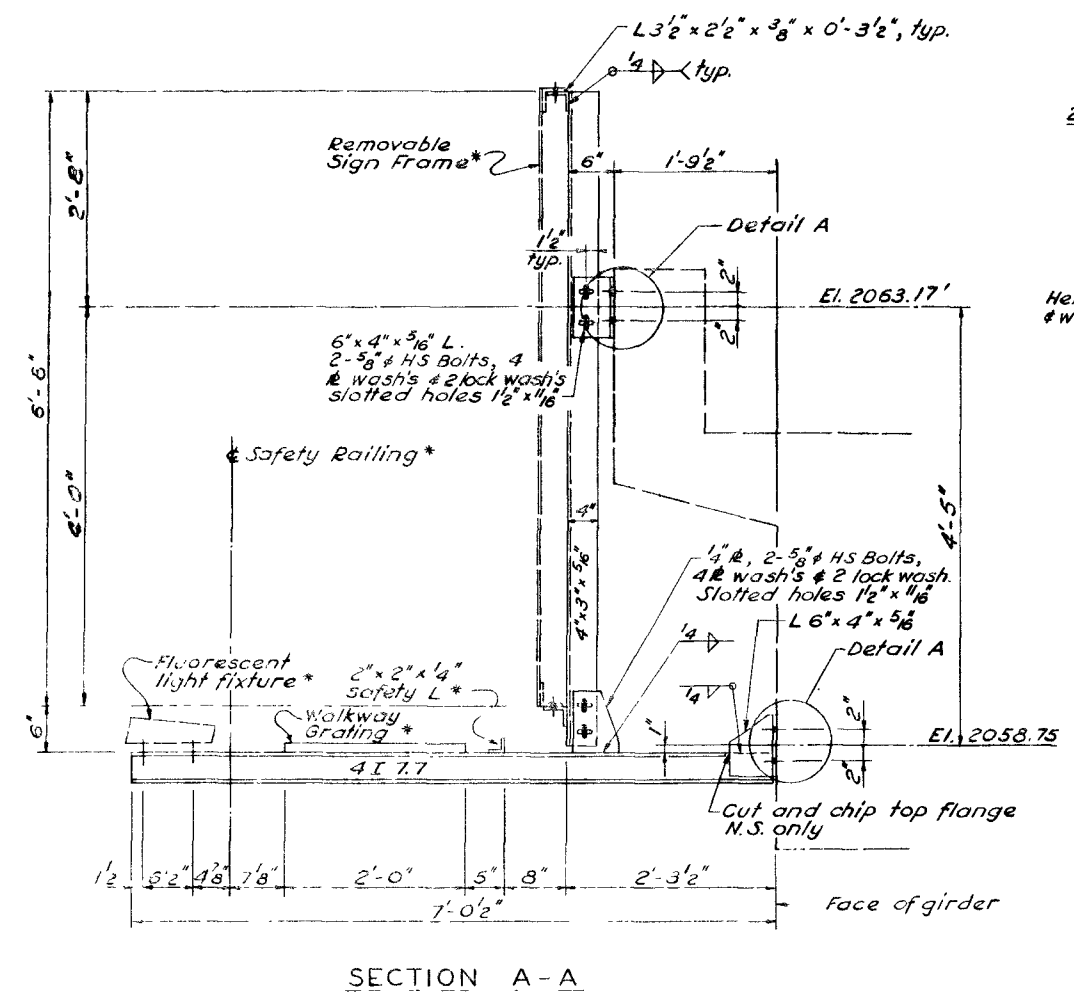
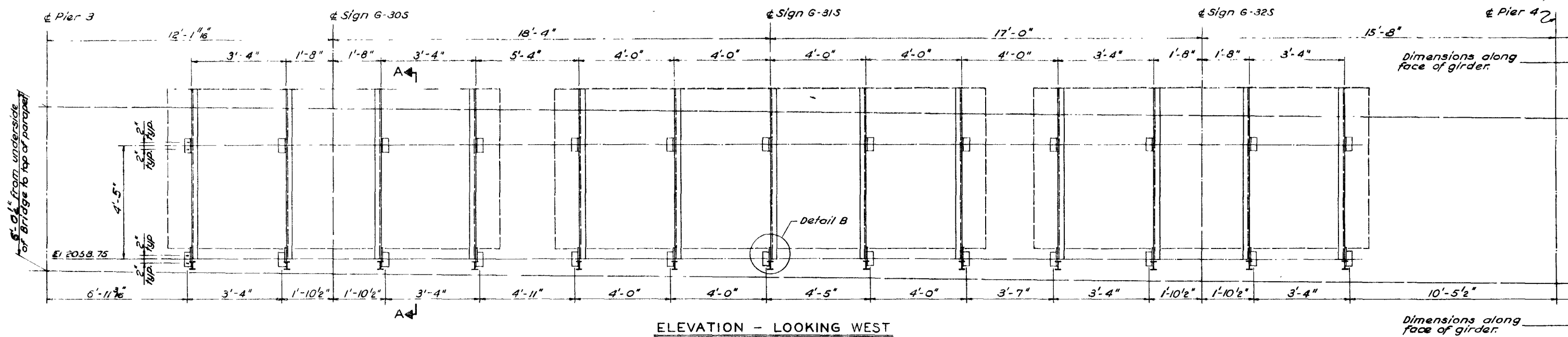


FED. ROAD DIV. NO.	STATE	PROJECT NO.	COUNTY	CONTROL SECTION	STATE ROUTE	SHEET NO.	TOTAL SHEETS
7	NEVADA	0-015-1 (3104)	CLARK	02-083		114	

Ref. Sheet J-9



* For Details see "OVERHEAD SIGN DETAILS" Drawings

J 9014
SP 266

107V3833

STATE OF NEVADA
DEPARTMENT OF HIGHWAYS
SUSPENDED SIGN DETAILS
CHARLESTON BLVD. OVERPASS
LAS VEGAS FREEWAY

DE LEUW, CATHER & COMPANY
ENGINEERS
SAN FRANCISCO CALIFORNIA

DESIGNED BY SHS
CHECKED BY RAO
APPROVED BY RJD
BA Lewis