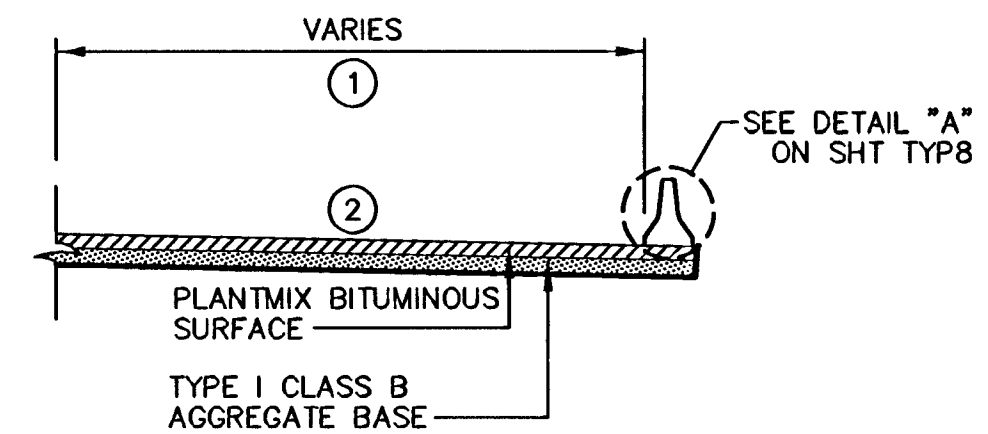


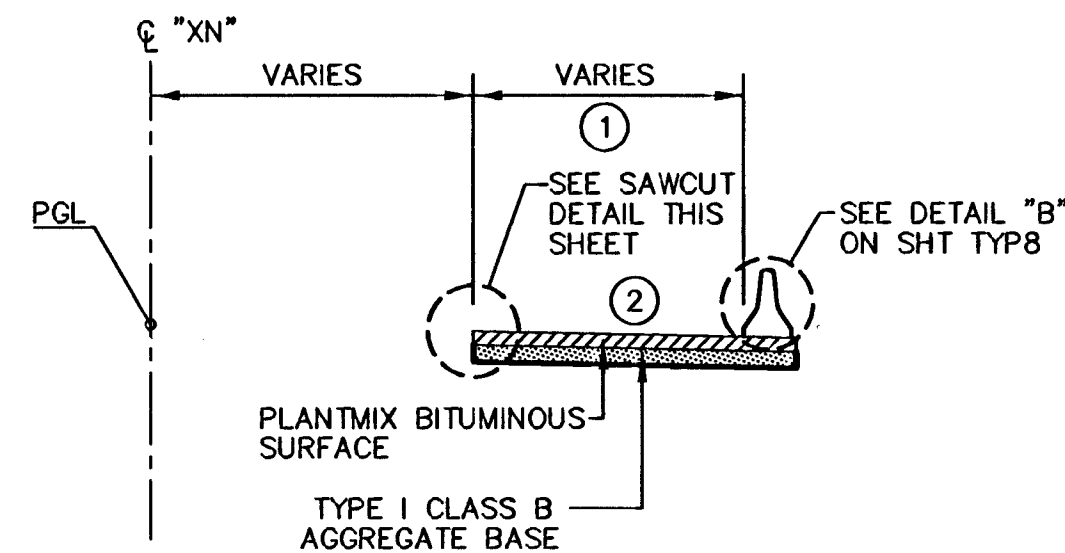
US 95 NORTH BOUND OFF-RAMP "HD1"

"XN" 328+95.39 TO "XN" 350+65.22=
 "HD1" 129+22.39 TO "HD1" 150+89.75



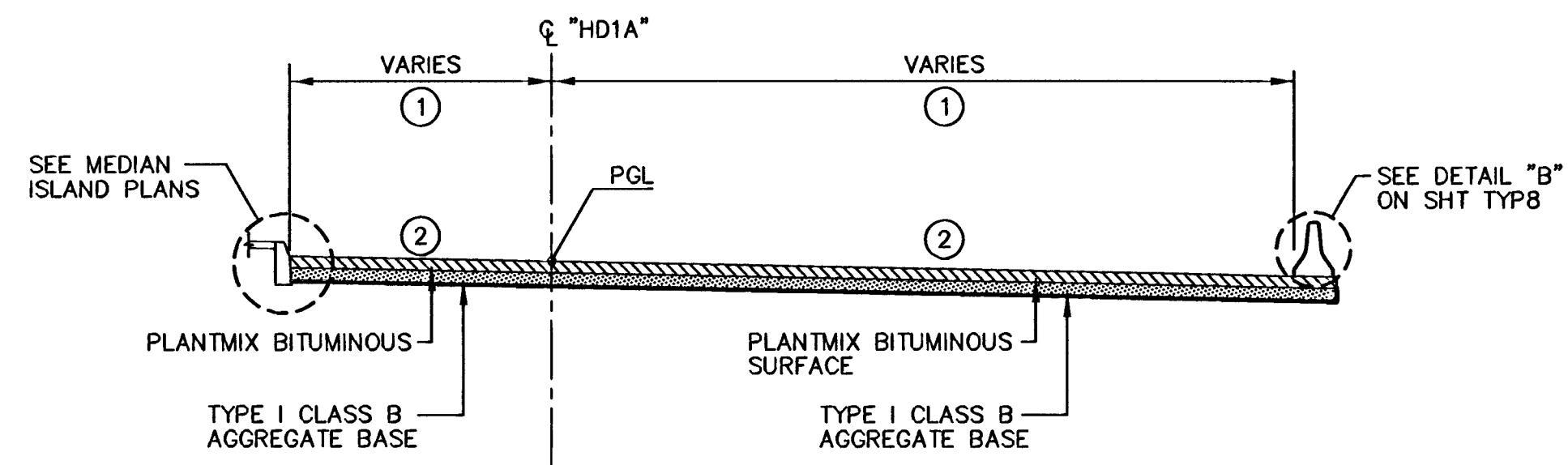
US 95 NORTH BOUND OFF-RAMP "HD1"

"HD1" 160+00 TO "HD1" 160+17.03



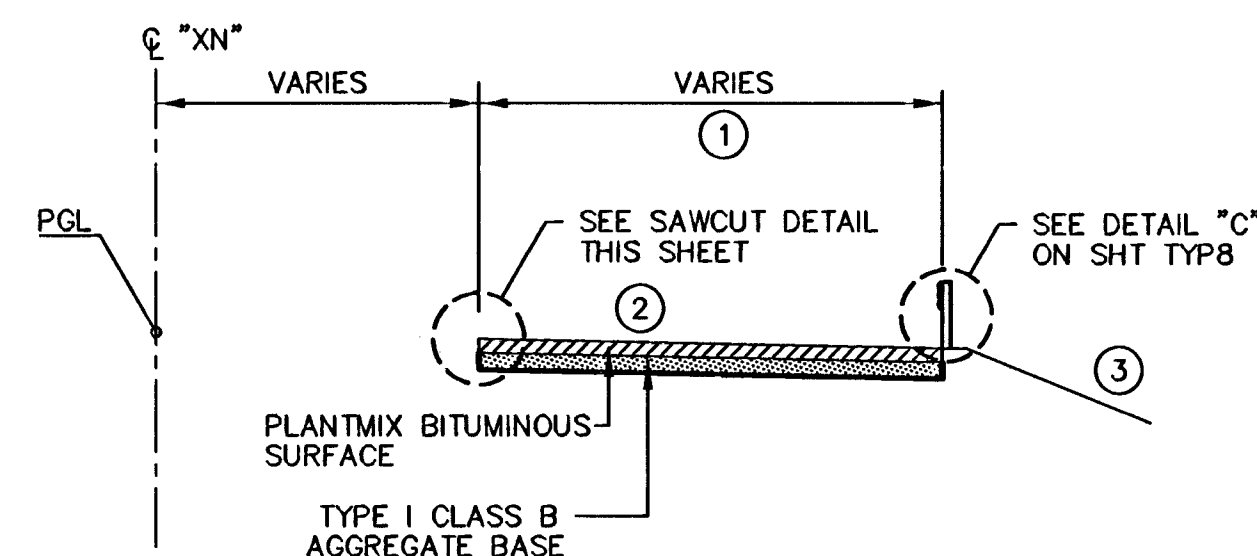
US 95 NORTH BOUND OFF-RAMP "HD1"

"HD1" 147+49.54 TO "HD1" 150+89.75



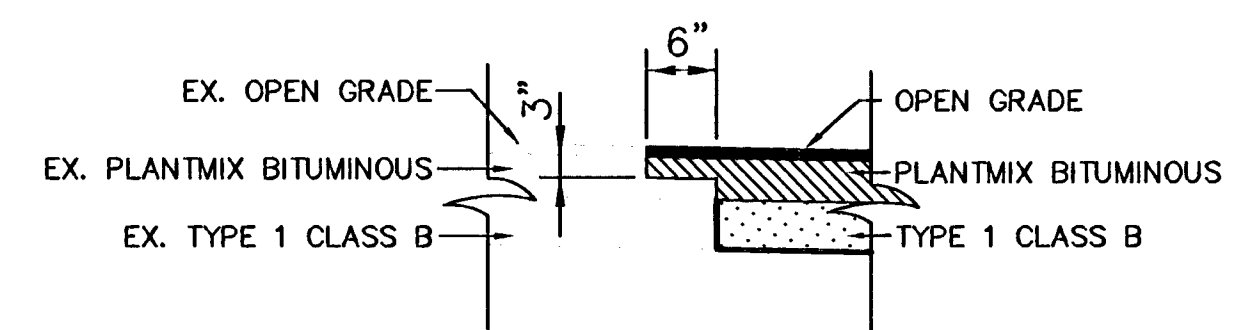
US 95 NORTH BOUND OFF-RAMP "HD1A"

"HD1A" 160+17.03 TO "HD1A" 161+56.85

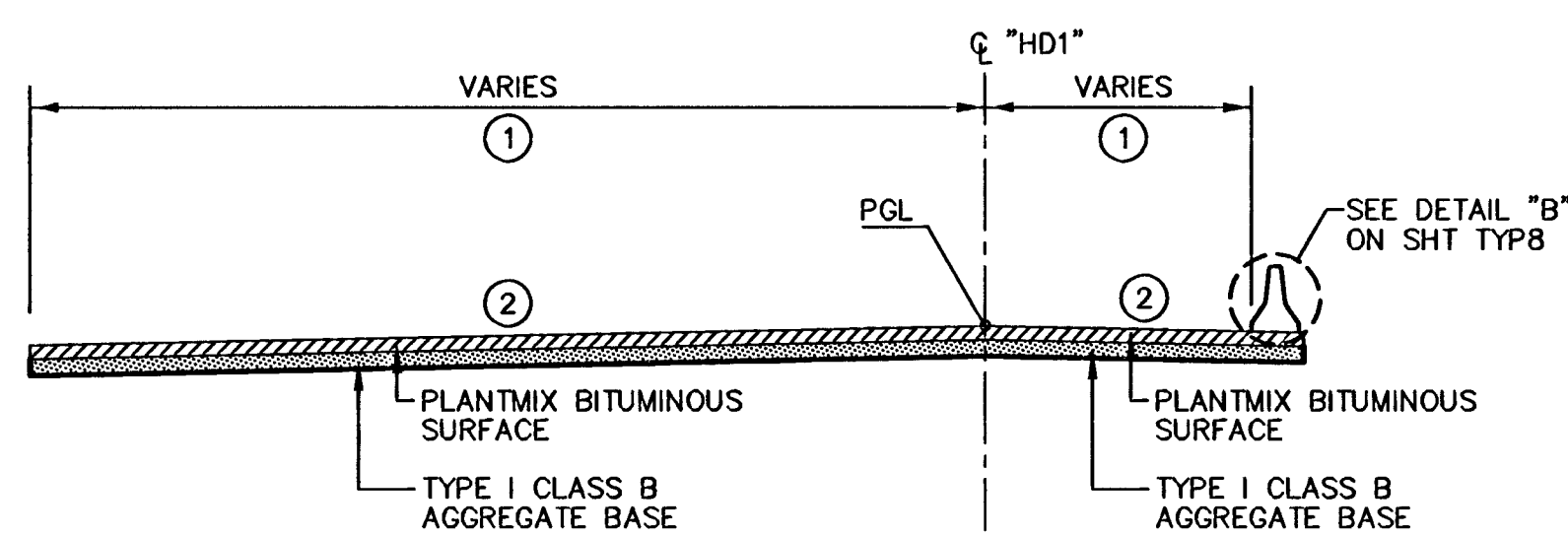


US 95 NORTH BOUND OFF-RAMP "HD1"

"HD1" 145+94.50 TO "HD1" 147+49.50

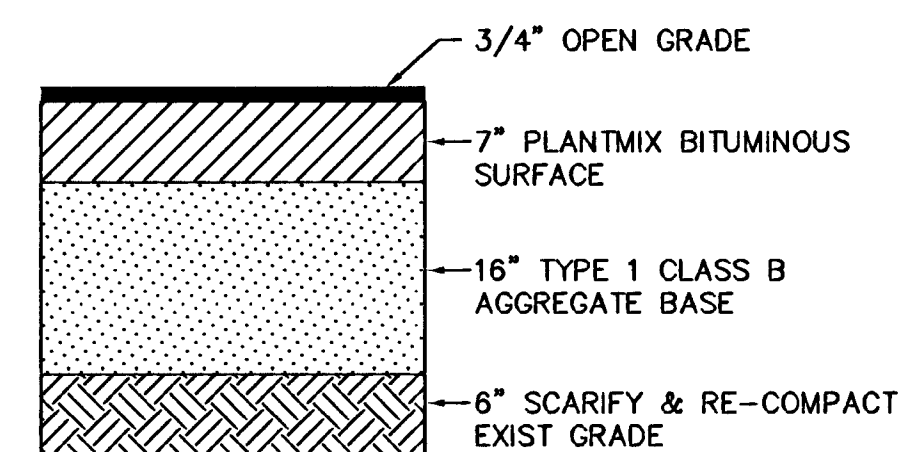


SAWCUT AT US95 MAINLINE



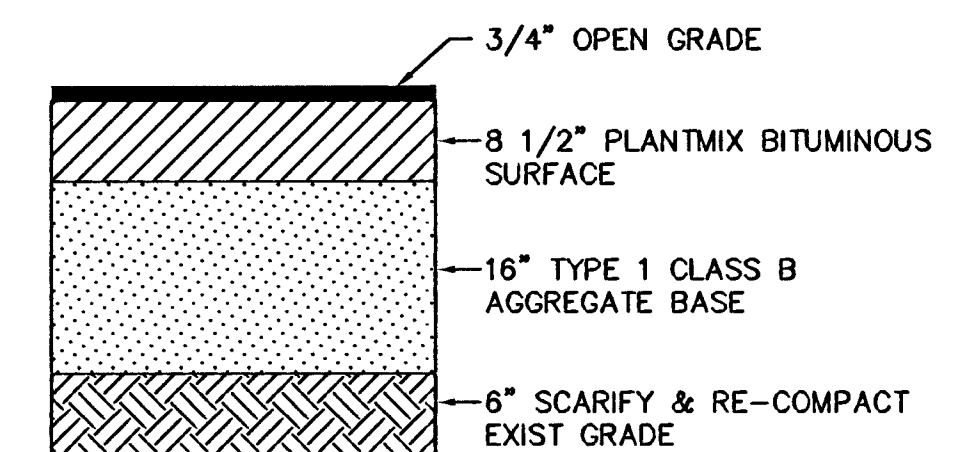
US 95 NORTH BOUND OFF-RAMP "HD1"

"HD1" 150+89.75 TO "HD1" 160+00



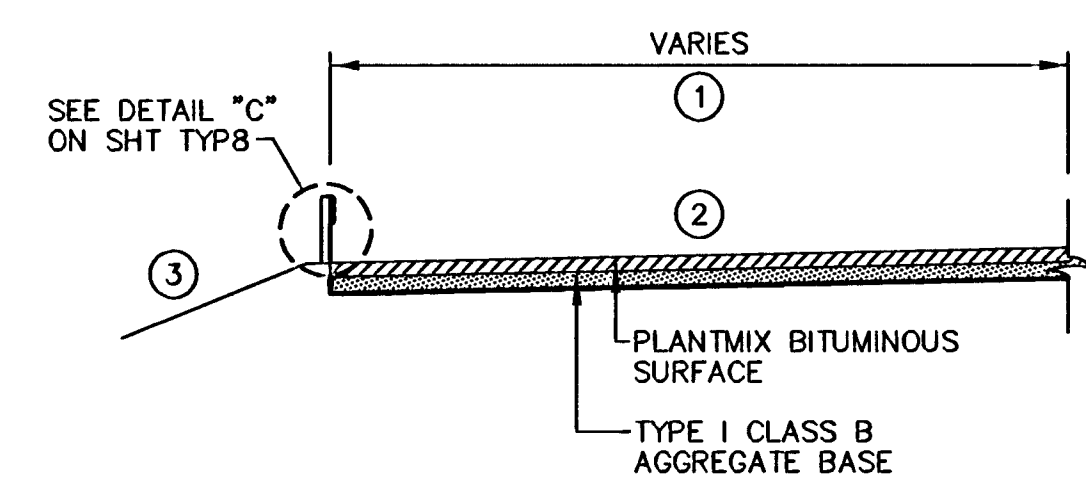
US 95 NORTH BOUND OFF-RAMP "HD1" & "HD1A"

TYPICAL PAVEMENT SECTION



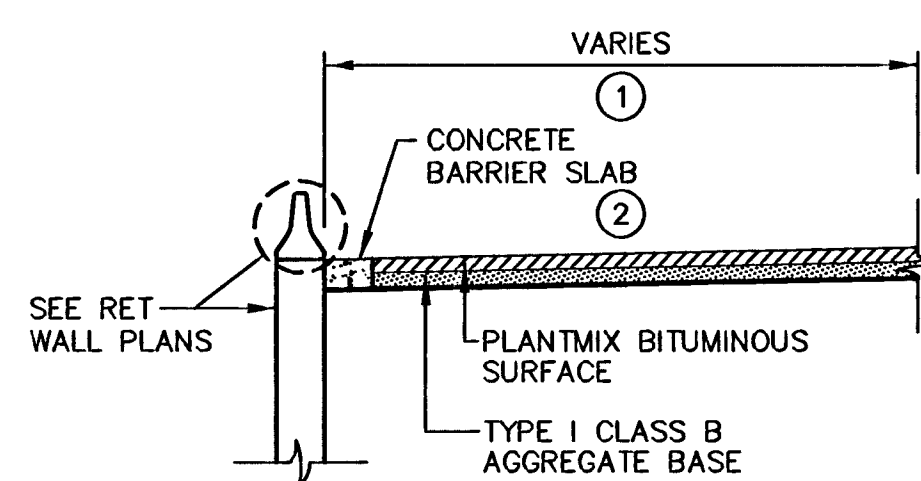
US 95 MAINLINE NORTH BOUND

TYPICAL PAVEMENT SECTION



US 95 NORTH BOUND OFF-RAMP "HD1"

"HD1" 153+46.50 TO "HD1" 154+16.31



US 95 NORTH BOUND OFF-RAMP "HD1"

"HD1" 154+16.31 TO "HD1" 160+93.16

CONSTRUCTION NOTES:

- PAVEMENT WIDTH VARIES (SEE ROADWAY PLANS FOR PAVEMENT WIDTHS)
- CROSS SLOPE VARIES (SEE PROFILE SHT P4 & P4A FOR THE SUPERELEVATION DIAGRAMS)
- SLOPE VARIES (SEE DRAINAGE AND GRADING PLANS)

NOTES:

- FOR BARRIER RAIL LOCATIONS SEE ROADWAY PLANS
- FOR FENCE LOCATIONS SEE FENCING PLANS

AVOID OVERHEAD POWER LINE CONTACT IT'S COSTLY

Call before you Dig

Call 811

1-702-227-2929

NEVADA POWER ENVIRONMENT AND SAFETY SERVICES DEPARTMENT

1-800-227-2800

OR CALL YOUR LOCAL UTILITY

1-702-455-7544

DRAWN BY: DRE	06/20/2008	DESIGNED BY: DRE	06/20/2008	CHECKED BY: DRE	06/20/2008	PROJECT NO: 6500	SCALE: NTS	HORZ. REF.:	VERT. REF.:
							N/A		
<p>PUBLIC WORKS DEPARTMENT 400 E. STEWART AVE. LAS VEGAS, NV 89101 702-228-0672</p> <p>CITY OF LAS VEGAS, NV 2727 SOUTH SANDER BOULEVARD LAS VEGAS, NEVADA 89146-5146 PH: (702) 872-7500 FAX: (702) 382-2587 nevada CONSULTING ENGINEERS • PLANNERS • LAND SURVEYORS</p>									
<p>TYPICAL CROSS SECTIONS US 95 NORTH BOUND OFF-RAMP "HD1" & "HD1A"</p>					<p>HORSE DRIVE / US 95 INTERCHANGE</p>				
<p>SHEET TYP4 20 OF 453 SHEETS DRAWING NO. 107V3769</p>									

114192