

LEGEND:

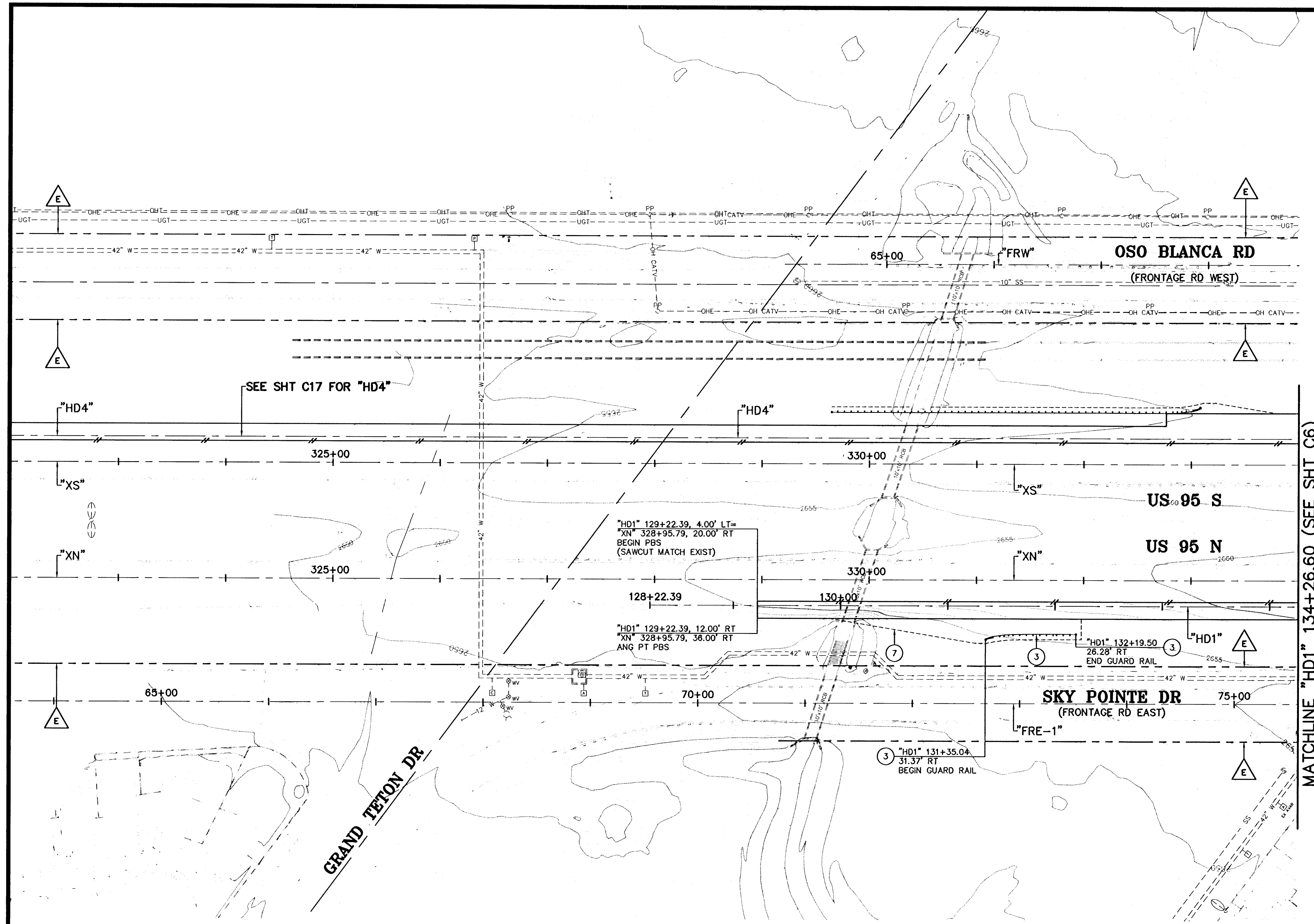
- DENOTES PBS (PLANTMIX BITUMINOUS SURFACE) SEE TYP CROSS SECTIONS
- DENOTES SAWCUT LINE FOR PBS (PLANTMIX BITUMINOUS SURFACE)
- "HD1" DENOTES NEW CL HORSE DR/FT APACHE RD RAMP 1
- EXIST NDOT RIGHT-OF-WAY

CONSTRUCTION NOTES:

- 3 INSTALL GALVANIZED GUARD RAIL (TRIPLE CORRUGATION); GUARD RAIL TERMINAL (FLARED) PER NDOT STD DWG NO. R-8.1.1. CONTRACTOR TO FIELD VERIFY HORIZONTAL & VERTICAL LOCATION OF ANY NEW AND/OR EXISTING UNDERGROUND FACILITIES PRIOR TO INSTALLATION OF GUARD RAIL
- 7 GRADING HINGE LINE (SEE TYP SECTIONS, STORM DRAIN & GRADING PLANS)

NOTE:

FOR STORM DRAIN REMOVAL, PROTECT IN PLACE & GRADING INFORMATION SEE SHEET SD1 THRU SD43



MATCHLINE "HD1" 134+26.60 (SEE SHT C6)

PUBLIC WORKS DEPARTMENT CITY OF LAS VEGAS, NV 400 E. STEWART AVE LAS VEGAS, NV 89101 702-229-6272		2727 SOUTH RAINBOW BOULEVARD LAS VEGAS, NEVADA 89146-5148 PH. (702) 875-7500 FAX (702) 362-2987 nevada CONSULTING ENGINEERS & LAND SURVEYORS	
ROADWAY PLAN "HDT" 128+22.39 TO "HDT" 134+26.60	HORSE DRIVE / US 95 INTERCHANGE	DRAWN BY: DRF	06/20/2008
		DESIGNED BY: LAW	06/20/2008
		CHECKED BY: KDC	06/20/2008
		PROJECT NO: 6500	SCALE: 1"=50' N/A
SHEET C5 53 OF 453 SHEETS		DRAWING NO. 107V3769	

AVOID OVERHEAD POWER LINE CONTACT IT'S COSTLY

Call before you Overhead

1-702-227-2929

NEVADA POWER ENVIRONMENT AND SAFETY SERVICES DEPARTMENT

Call before you Dig

Avoid cutting, underground utility lines. It's costly.

Call 811

1-800-227-2800

OR

CLERK COUNTY OFFICE OVERHEAD 1-702-455-7544

114225