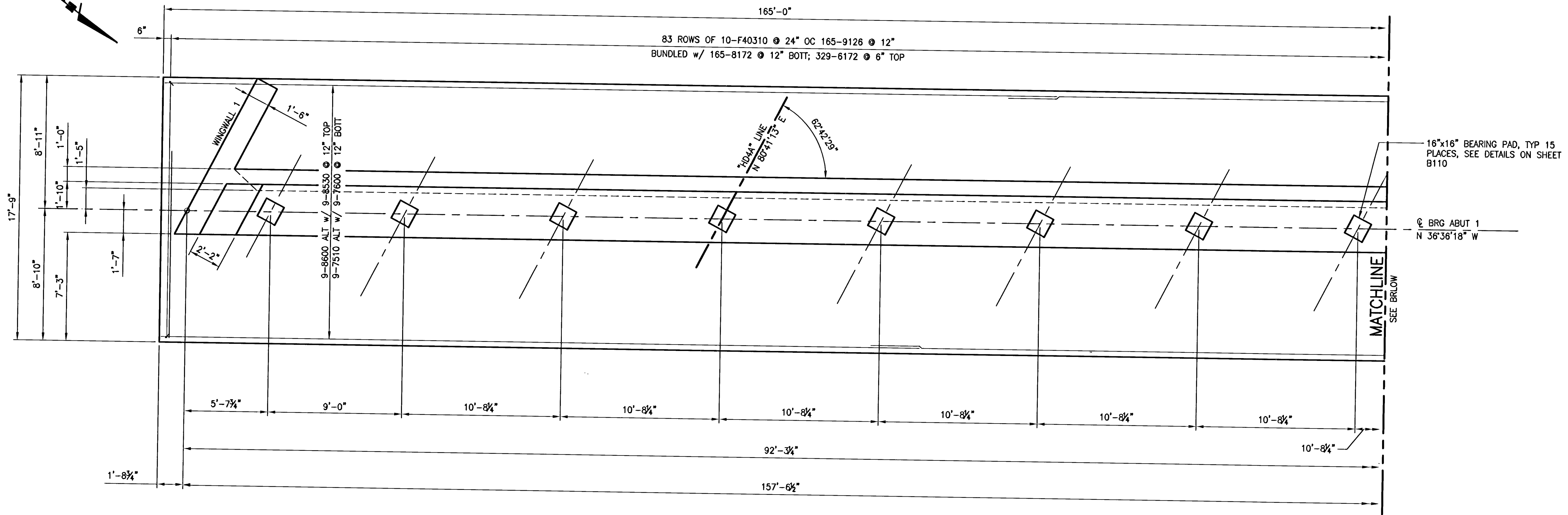
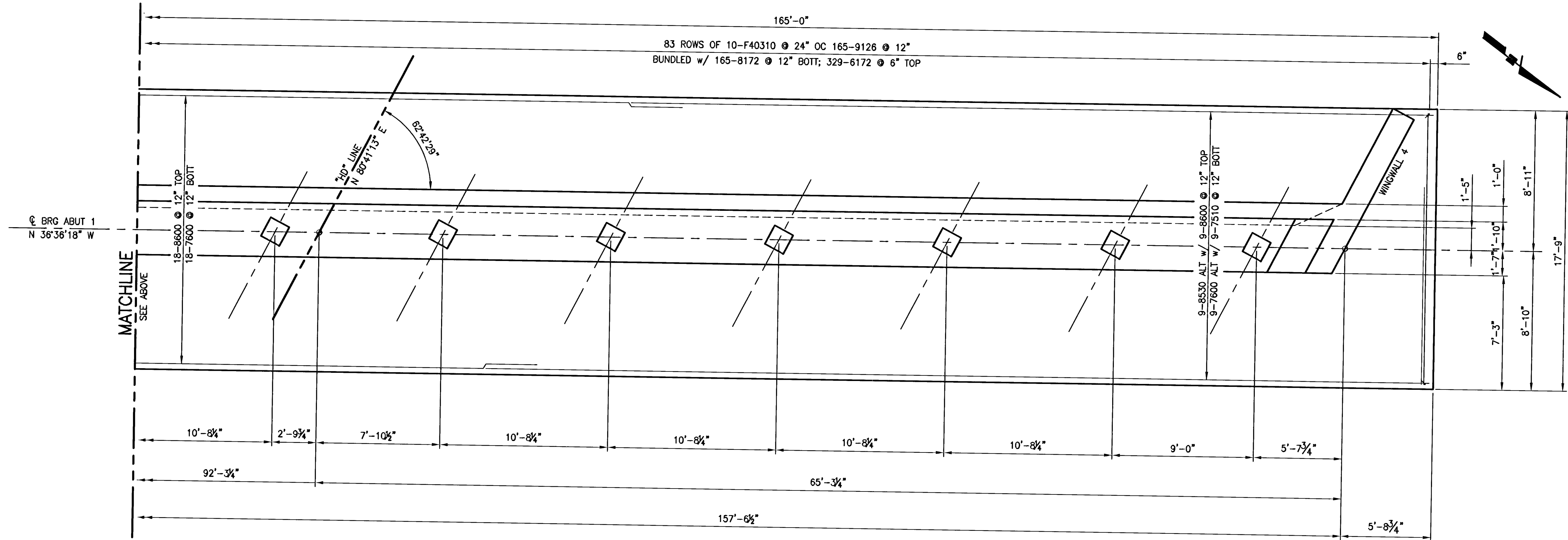


Russ Davis



ABUTMENT 1 PARTIAL PLAN



ABUTMENT 1 PARTIAL PLAN

LEGEND:
 NF = NEAR FACE
 FF = FAR FACE
 EF = EACH FACE

MINIMUM BAR LAPS:
 NO. 7 TO NO. 7 BARS = 3'-3" LAP
 NO. 8 TO NO. 8 BARS = 4'-3" LAP

Wednesday, July 02, 2008 10:52:12 AM

114672

REV	DATE	BY	REVISION

PUBLIC WORKS DEPARTMENT
 400 E. STEWART AVE.
 LAS VEGAS, NV 89101
 702-259-6272

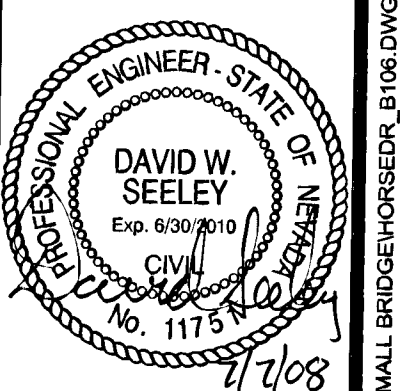
CITY OF LAS VEGAS, NV

R-H ENGINEERING, INC.
 CONSULTING STRUCTURAL ENGINEERS
 1115 S. LAS VEGAS BLVD., SUITE 200
 LAS VEGAS, NEVADA 89101
 PHONE: 702-259-6272 FAX: (702) 259-6272

**HORSE DRIVE OVER FRONTAGE RD
 ABUTMENT 1 PLAN**

**HORSE DRIVE / US 95
 INTERCHANGE**

DESIGNED BY: D. SEELEY 6/30/2008
 DRAWN BY: D. SEELEY 6/30/2008
 CHECKED BY: D. SEELEY 6/30/2008
 PROJECT NO.: 107V3759
 SCALE: 1/4"=1'-0" HORIZ.
 1/4"=1'-0" VERT.



SHEET
B106
 OF 433 SHEETS
 DRAWING NO.
107V3759

H-2897

P:\06\030374-DWG\SMALL BRIDGE\HORSEDR_B106.DWG