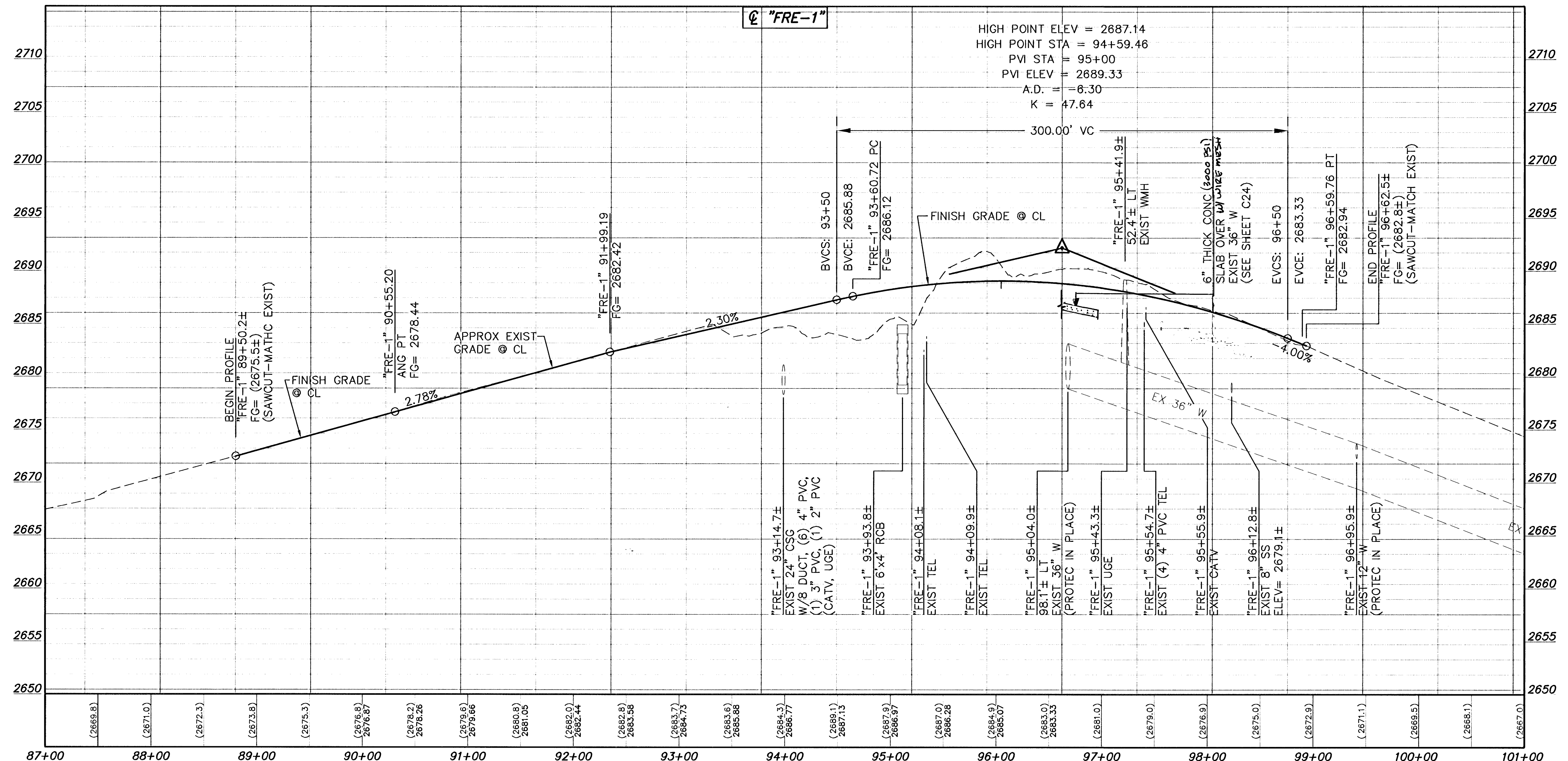


**SUPERELEVATION**



**NOTE:**  
 EXIST LVVWD 12" W & 36" W TO  
 MAINTAIN 60" MIN COVER  
 (PROTECT IN PLACE)

**APPROVED**  
*Joseph Morgan*  
 LAS VEGAS VALLEY WATER DISTRICT  
 LVVWD PROJECT # H80315  
 DATE 7/1/08

**Call before you Dig**  
 Avoid cutting underground utilities blind. It's costly.  
 Call 811  
 1-800-227-2929  
 NEVADA POWER ENVIRONMENT AND SAFETY SERVICES DEPARTMENT  
 1-702-455-7544

<b>PUBLIC WORKS DEPARTMENT</b>	
400 E. STEWART AVE LAS VEGAS, NV 89101 702-229-8272	
<b>CITY OF LAS VEGAS, NV</b>	
2727 SOUTH RAINBOW BOULEVARD LAS VEGAS, NEVADA 89146-5148 PH. (702) 807-7550 FAX (702) 362-2597	
nevada CONSULTING ENGINEERS • PLANNERS • LAND SURVEYORS	
DATE	BY
<b>ROADWAY PROFILE</b>	
<b>"FRE-1" 87+00 TO "FRE-1" 96+62.5±</b>	
<b>HORSE DRIVE / US 95 INTERCHANGE</b>	
DRAWN BY: WBM	06/30/2008
DESIGNED BY: LAW	06/30/2008
CHECKED BY: KOC	06/30/2008
PROJECT NO: 5500	SCALE: 1"=50' HORIZ. 1"=5' VERT.
SHEET P11	
103 OF 433 SHEETS	
DRAWING NO. 107V3759	

114278

1:V8600(DWG)PRF-6500-FRE-1.dwg