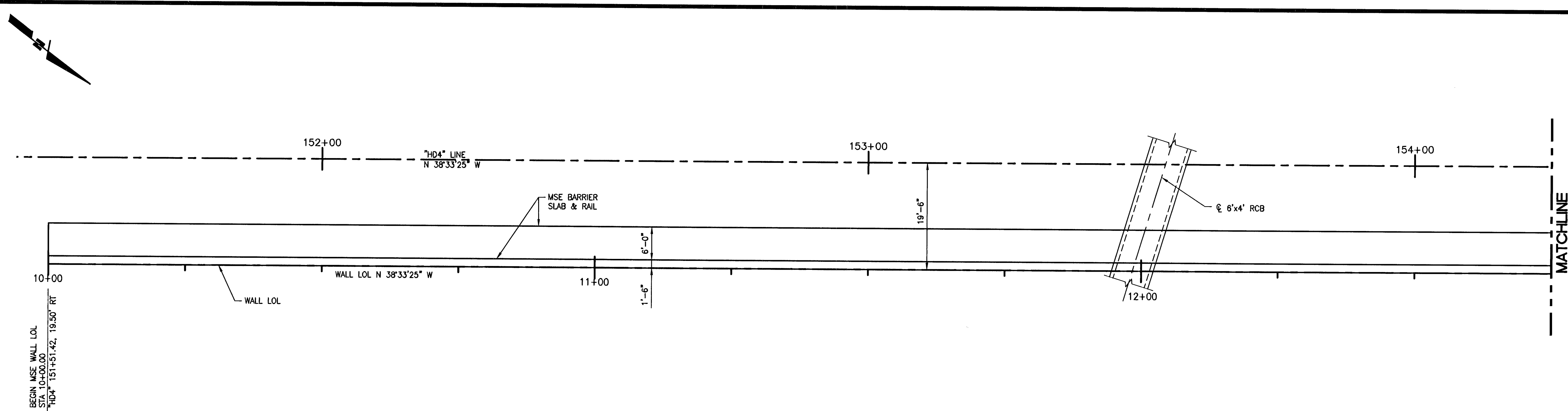


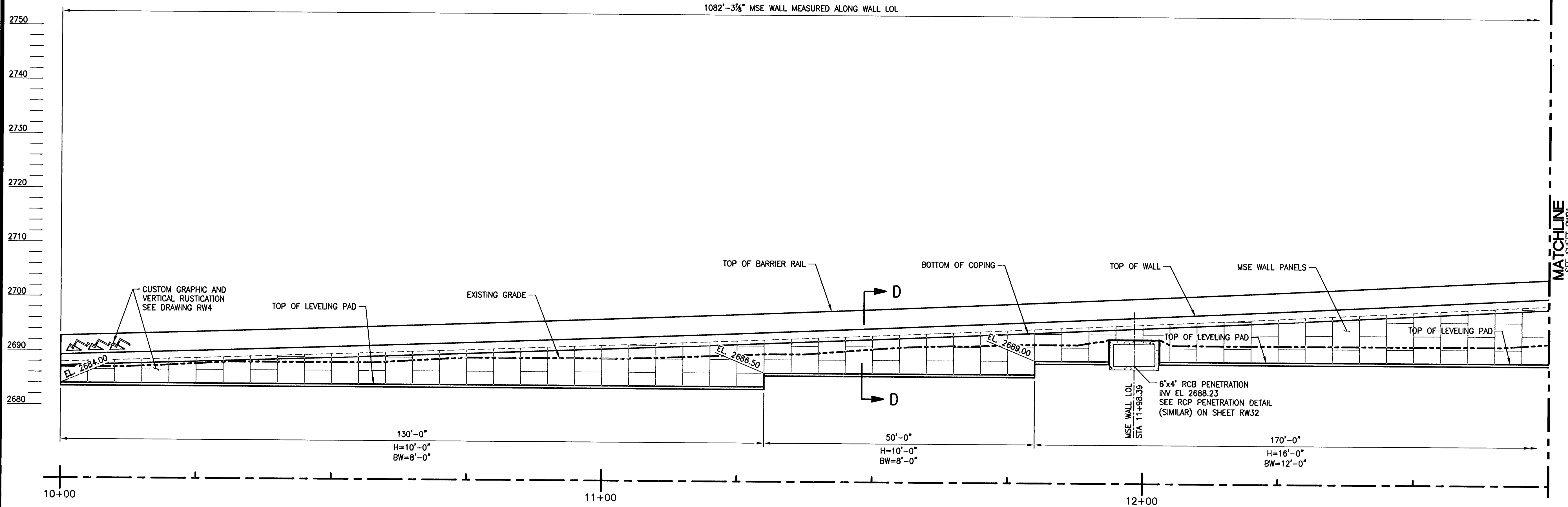
Russ Davis



PARTIAL PLAN

APPROVED

Joseph Morgan 7/14/08
 LAS VEGAS VALLEY WATER DISTRICT DATE
 LVWD PROJECT # H80315



PARTIAL ELEVATION

NOTES:
 1. FOR SECTION D-D, REFER TO SHEET RW24.

PUBLIC WORKS DEPARTMENT <small>400 E. STEWART AVE LAS VEGAS, NV 89101 702-228-6272</small>	CITY OF LAS VEGAS, NV <small>840 GRIER DRIVE, SUITE 200 • LAS VEGAS, NEVADA 89119 PHONE (702) 260-7000 • FAX (702) 260-7070</small>	R.H. ENGINEERING, INC. <small>CONSULTING STRUCTURAL ENGINEERS</small>	
MSE RETAINING WALL #4 PARTIAL PLAN & ELEVATION	HORSE DRIVE / US 95 INTERCHANGE		
DESIGNED BY: R. DAVIS	6/20/2008	DRAWN BY: A. BROWN	6/20/2008
CHECKED BY: R. DAVIS	6/20/2008	PROJECT NO.:	8255
SCALE: 1" = 10' HORIZ. 1" = 10' VERT.		SHEET NO. 7263	
436 RW20 433 OF 423 SHEETS DRAWING NO. 107V3759			

Tuesday, July 01, 2008 6:14:45 PM

114727

P:\00000374-LVWD\RETAINING WALLS\HORSEDR_W20.DWG