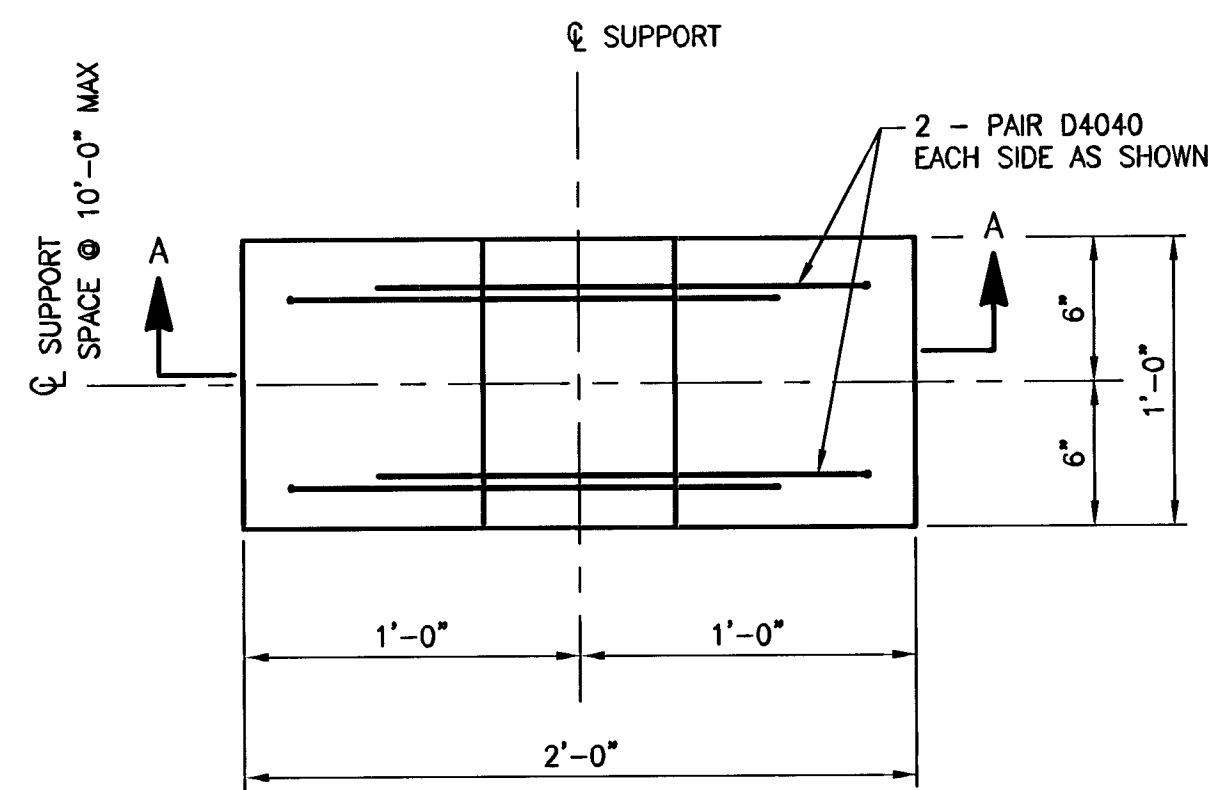
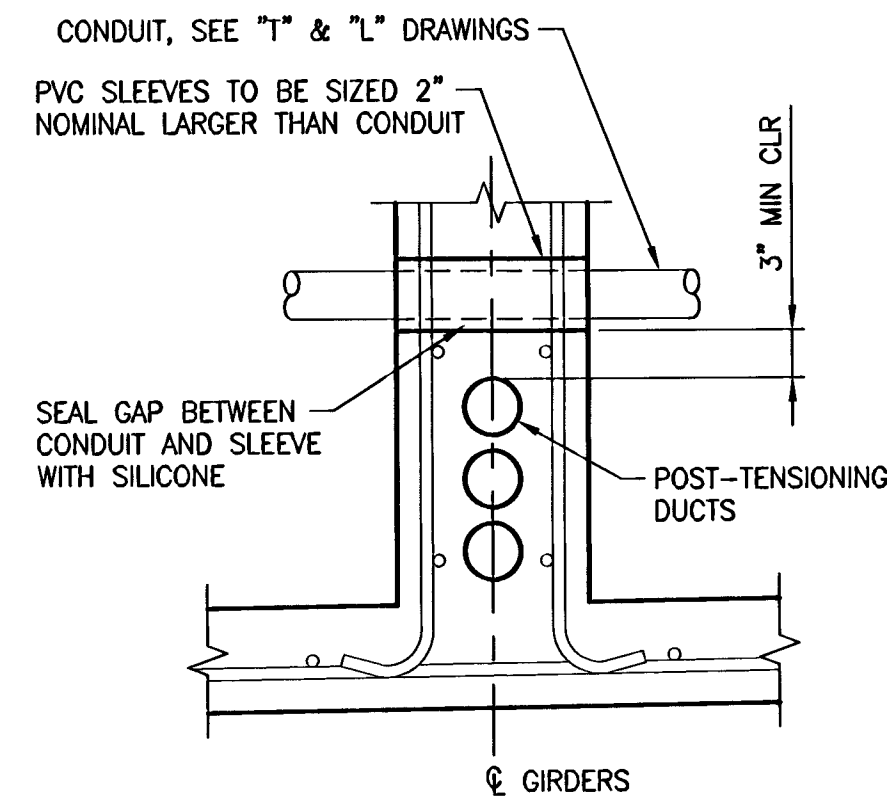


AT INTERMEDIATE DIAPHRAGM

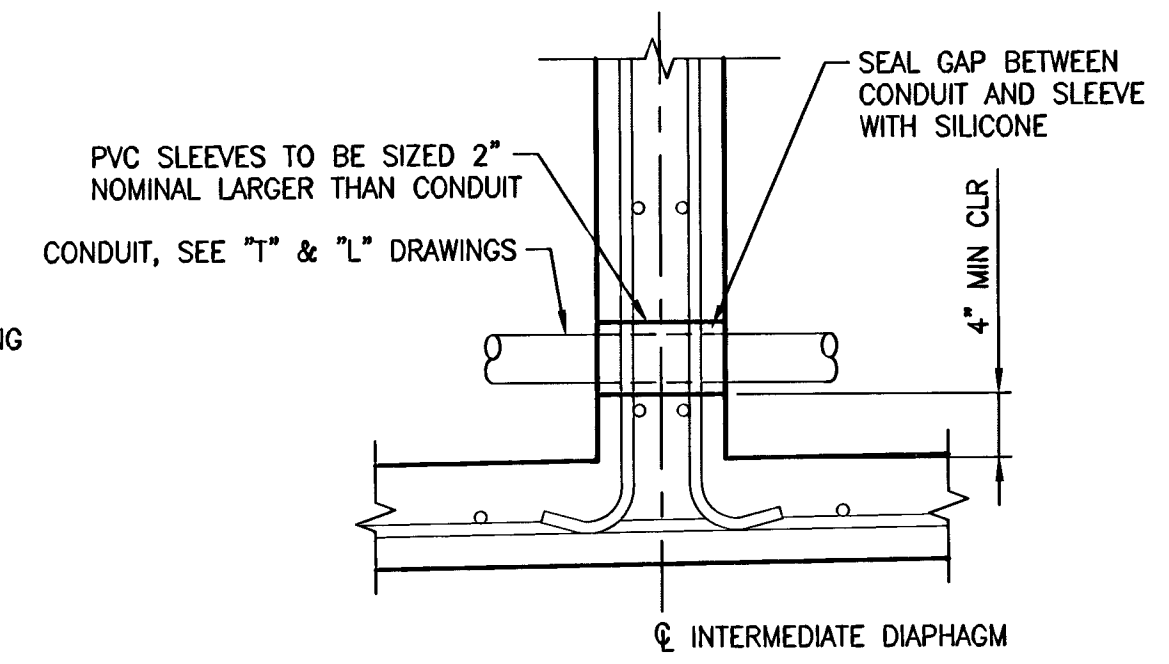


PLAN

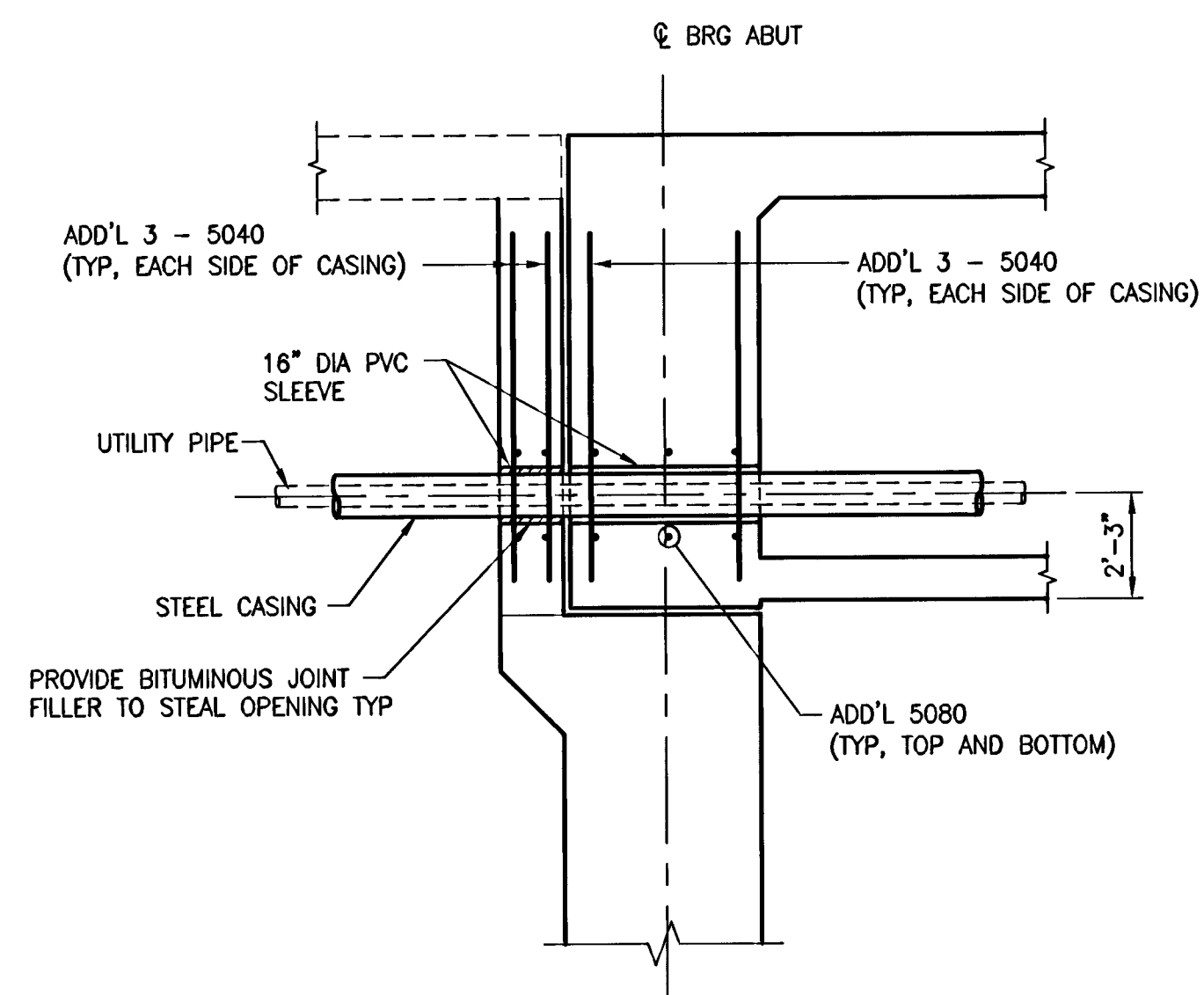


- NOTE:**
1. LOCATE SLEEVE TO MISS WEB REINFORCING AND POST-TENSIONING DUCTS.
 2. ANCHORING OF SLEEVES OR CONDUITS TO GIRDER IS NOT ALLOWED.

AT GIRDERS

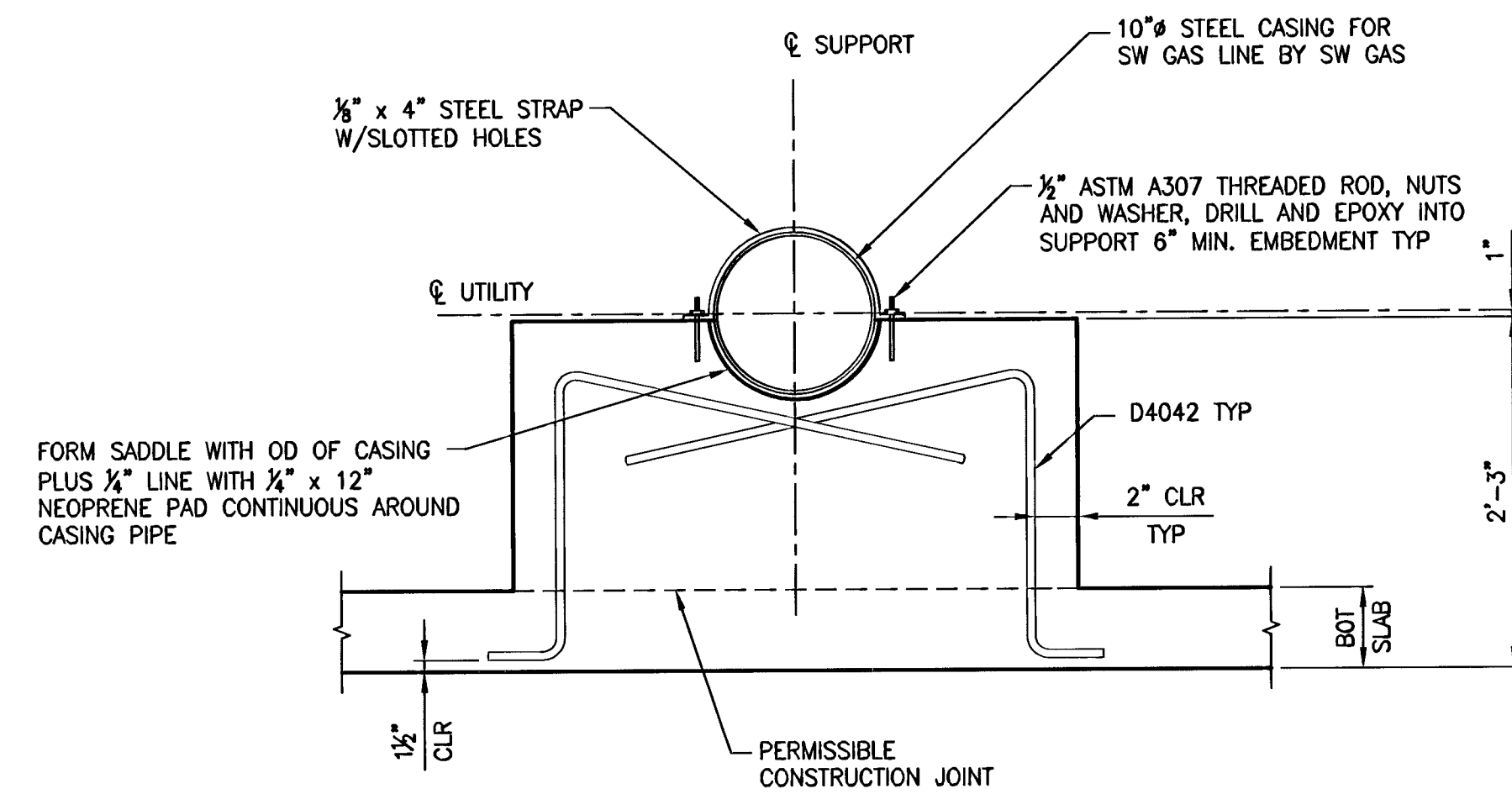


AT INTERMEDIATE DIAPHRAGM



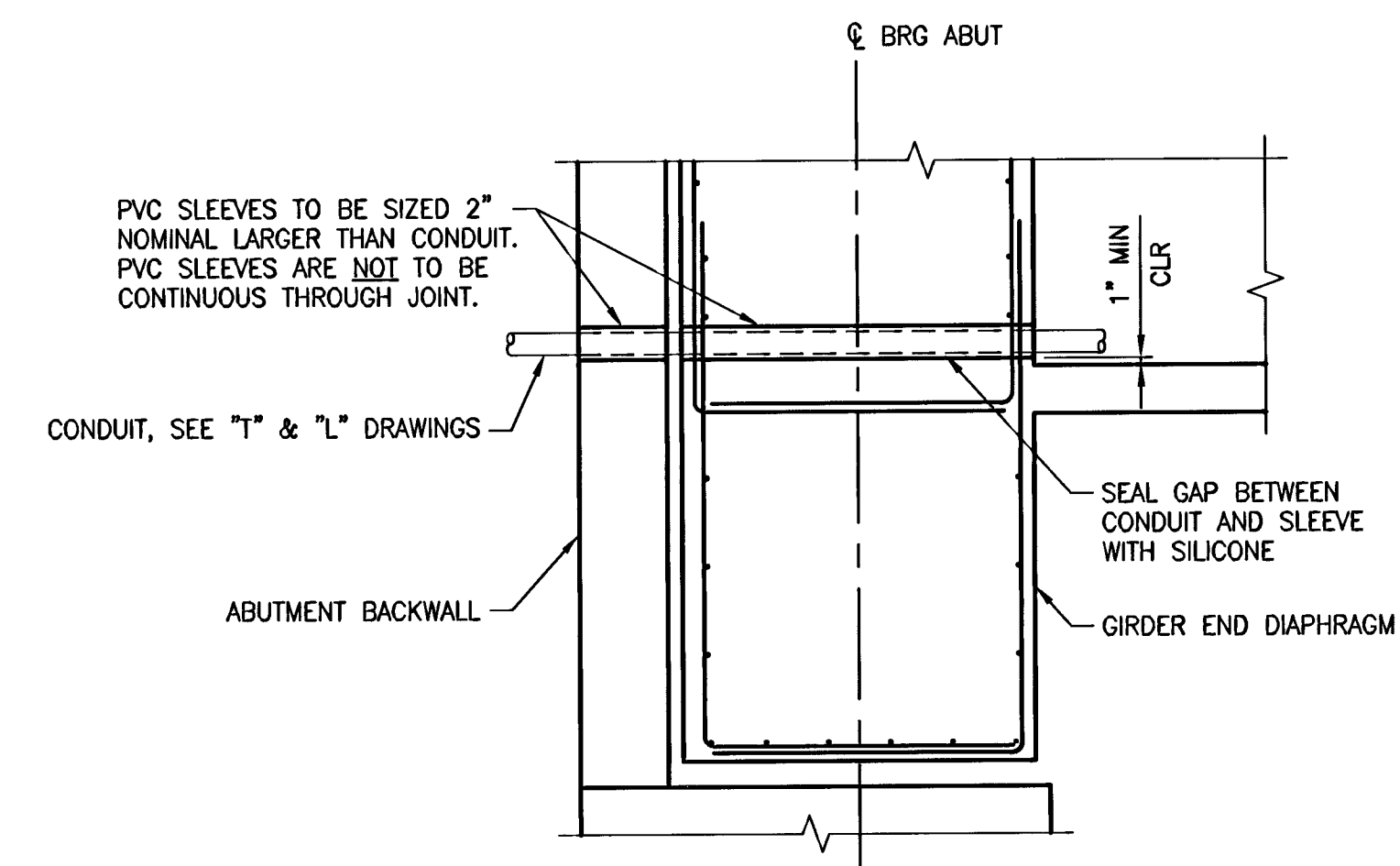
AT ABUTMENT

TYPICAL LARGE UTILITY OPENING DETAIL



SECTION A-A

TYPICAL LARGE UTILITY SUPPORT DETAIL



AT ABUTMENT

TYPICAL CONDUIT OPENING DETAIL

GENERAL UTILITY NOTES:

1. ALL BARS, PLATES AND STRAPS SHALL CONFORM OR AASHTO M270 GRADE 36 AND SHALL BE GALVANIZED.
2. ANCHOR BOLTS, NUTS AND WASHERS SHALL CONFORM TO ASTM A307 AND SHALL BE GALVANIZED.
3. PVC SLEEVES SHALL CONFORM TO AASHTO M252.
4. CASINGS SHALL BE INSTALLED BY SW GAS. SEE SPECIAL PROVISIONS.
5. CONTRACTOR SHALL SUPPLY ALL MATERIALS REQUIRED FOR THE UTILITY SUPPORTS, SLEEVES AND OPENINGS.
6. UTILITY SUPPORTS SHALL BE SPACED AT 10'-0" MAXIMUM CENTERS FROM ϕ BEARING AT ABUTMENT 1 TO ϕ BEARING AT ABUTMENT 2.
7. TYPICAL REINFORCING BARS AT OPENINGS TO BE RELOCATED OR CUT AS DIRECTED BY THE ENGINEER TO CLEAR OPENINGS FOR UTILITY SLEEVES UNLESS NOTED OTHERWISE.
8. ADJACENT CONDUIT PENETRATIONS SHALL BE SEPARATED BY AT LEAST 2 CONDUIT DIAMETERS, MINIMUM 1'-0" FROM ϕ TO ϕ .

DESIGNED BY: D. SEELEY	6/30/2008
DRAWN BY: D. ELY	6/30/2008
CHECKED BY: D. SEELEY	6/30/2008
PROJECT NO: 00037	SCALE: NONE HORIZ: NONE VERT: NONE

PROFESSIONAL ENGINEER - STATE OF NEVADA
 DAVID W. SEELEY
 Exp. 6/09/2011
 No. 1175
 7/7/08

SHEET
313 B118
 OF 453 SHEETS
 DRAWING NO.
107V3759

H-2897

114684

PUBLIC WORKS DEPARTMENT
 CITY OF LAS VEGAS, NV
 400 E. STEWART AVE.
 LAS VEGAS, NV 89101
 702-228-6272

R2H ENGINEERING, INC.
 CONSULTING STRUCTURAL ENGINEERS
 840 GRIER DRIVE, SUITE 300 • LAS VEGAS, NEVADA 89119
 PHONE (702) 260-7000 • FAX (702) 260-7070

HORSE DRIVE OVER FRONTAGE RD UTILITY DETAILS

HORSE DRIVE / US 95 INTERCHANGE

REV	DATE	BY	REVISION