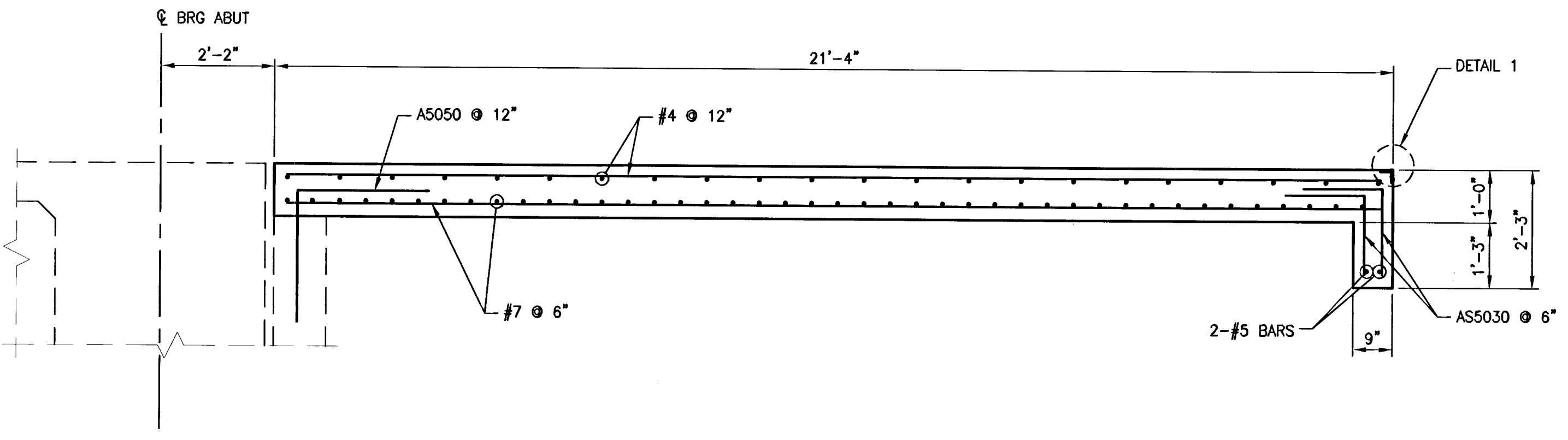
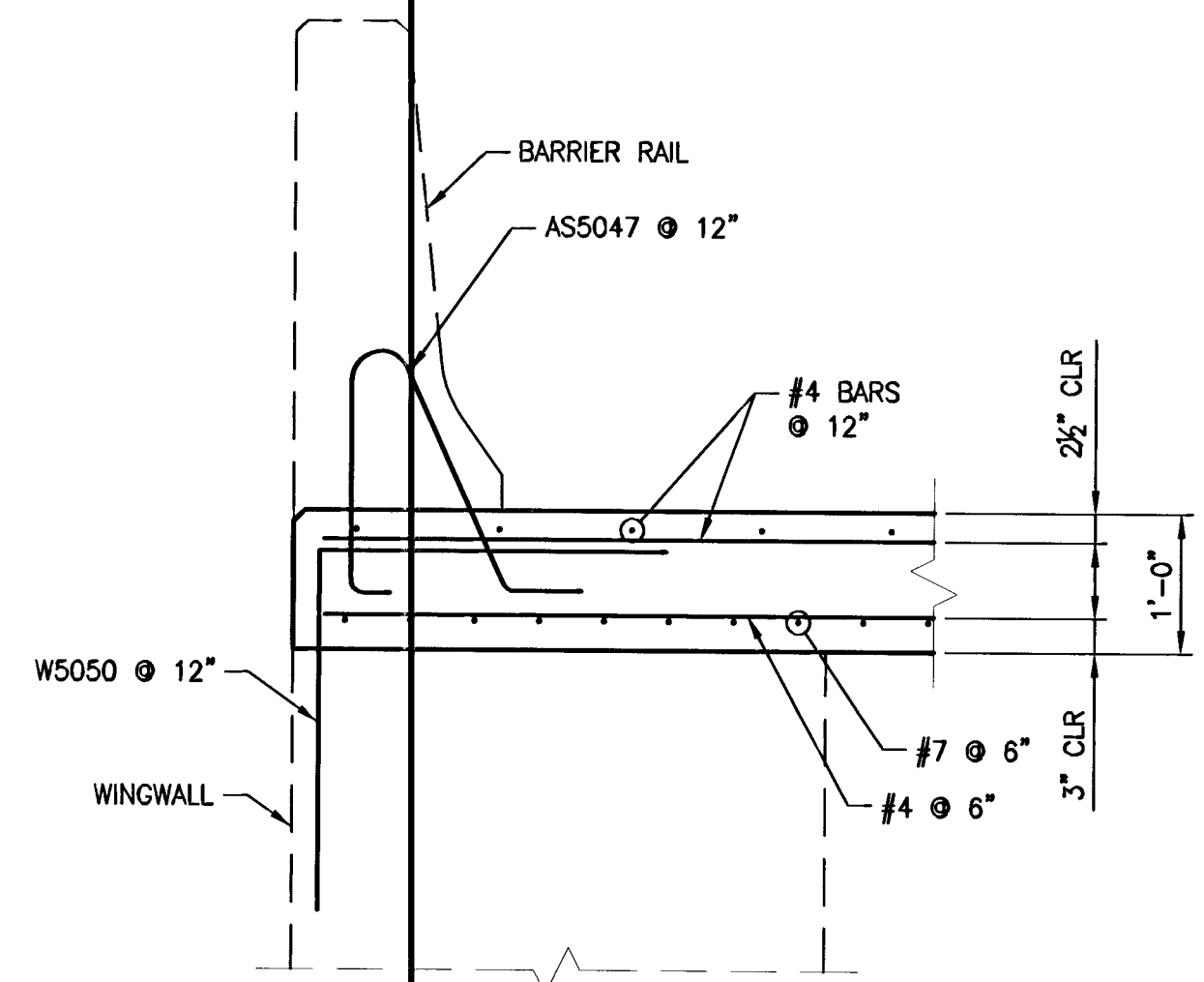


APPROACH SLAB POINT DATA				
POINT	COORDINATE		FROM CONST. $\phi$	
	NORTH	EAST	STATION	OFFSET
P1	26821855.6002	739588.0654	"HD4" 162+45.57	24'-0 $\frac{1}{2}$ " LT
P2	26821858.5350	739632.4811	"HD4" 162+45.57	22'-6" RT
P3	26821873.5274	739632.2967	"HD4" 162+62.86	22'-6" RT
P4	26821896.1542	739587.3888	"HD4" 162+81.16	24'-4 $\frac{1}{2}$ " LT
P5	26822138.0206	739384.1692	"HD3" 165+92.34	8'-7 $\frac{1}{2}$ " LT
P6	26822168.4662	739407.8373	"HD3" 165+92.34	31'-6" RT
P7	26822159.7671	739420.0568	"HD3" 165+76.61	31'-6" RT
P8	26822103.0798	739433.6838	"HD3" 165+33.59	8'-7 $\frac{1}{2}$ " LT
P9	26822178.0915	739715.0400	"HD2" 164+36.93	23'-10 $\frac{1}{8}$ " RT
P10	26822175.0762	739667.3508	"HD2" 164+35.86	23'-10 $\frac{1}{8}$ " LT
P11	26822160.0838	739667.5351	"HD2" 164+18.51	23'-6" LT
P12	26822136.8306	739712.9082	"HD2" 164+00.56	24'-3 $\frac{1}{4}$ " RT
P13	26821898.8420	739916.3553	"HD1" 160+92.99	8'-7 $\frac{1}{2}$ " RT
P14	26821865.1449	739891.9945	"HD1" 160+93.17	32'-11" LT
P15	26821873.8440	739879.7751	"HD1" 161+08.92	32'-9 $\frac{1}{2}$ " LT
P16	26821932.5560	739864.6442	"HD1" 161+53.98	8'-7 $\frac{1}{2}$ " RT

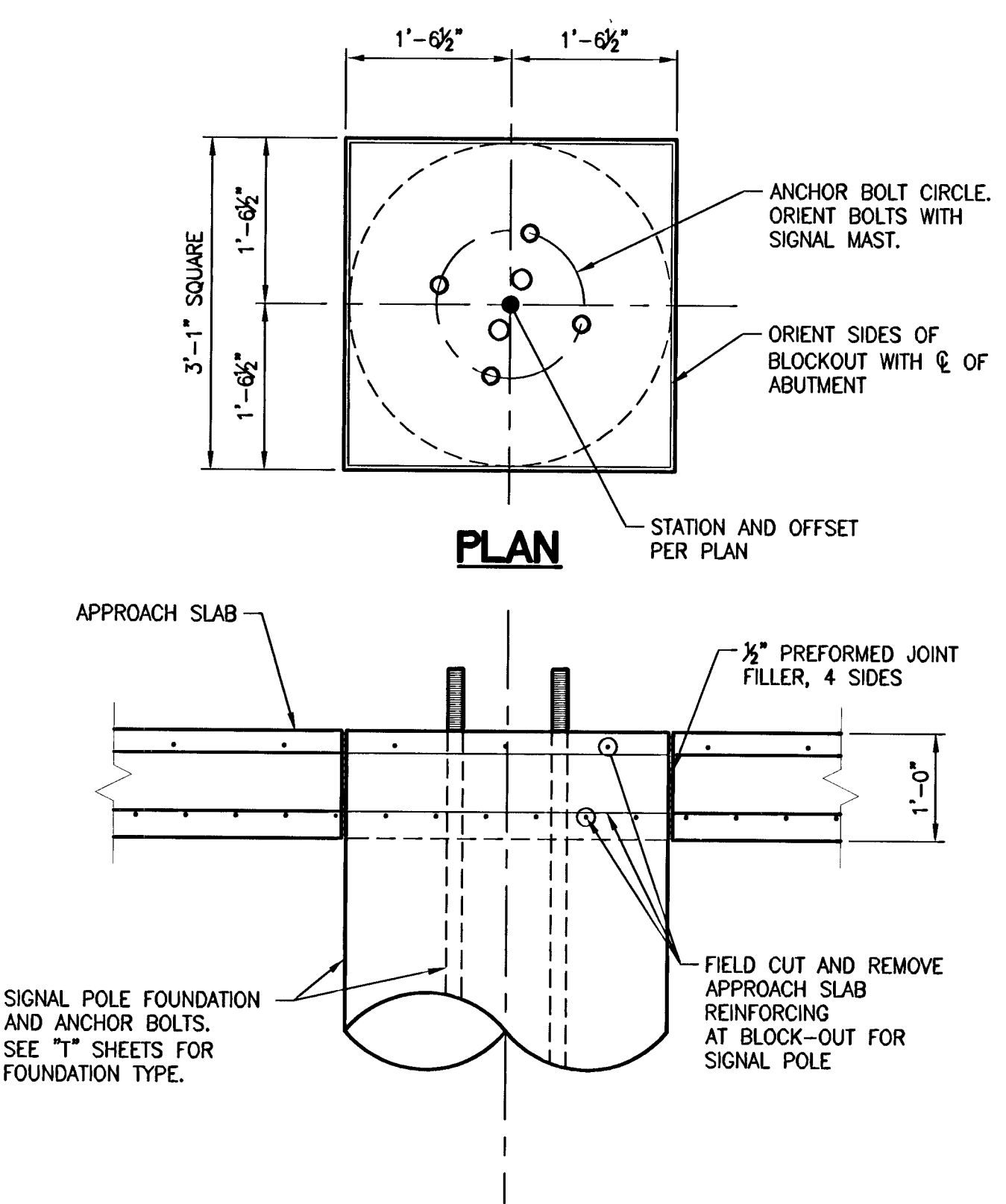
APPROACH SLAB REINFORCEMENT	
SET NO	DESCRIPTION
(A)	1-SET 4458 TO 42111 @ 1'-0" TOP (31 BARS/SET) W/ 1-SET 7458 TO 72111 @ 6" BOT (61 BARS/SET)
(B)	1-SET 4459 TO 4273 @ 1'-0" TOP (13 BARS/SET) W/ 1-SET 7459 TO 7273 @ 6" BOT (25 BARS/SET)
(C)	1-SET 42611 TO 40110 @ 1'-0" TOP (12 BARS/SET) W/ 1-SET 72611 TO 70110 @ 6" BOT (23 BARS/SET)
(D)	1-SET 4469 TO 4032 @ 1'-0" TOP (24 BARS/SET) W/ 1-SET 7469 TO 70110 @ 6" BOT (49 BARS/SET)
(E)	1-SET 4579 TO 4498 @ 1'-0" TOP (14 BARS/SET) W/ 1-SET 7594 TO 7513 @ 6" BOT (27 BARS/SET)
(F)	1-SET 4578 TO 4483 @ 1'-0" TOP (8 BARS/SET) W/ 1-SET 7593 TO 74910 @ 6" BOT (15 BARS/SET)
(G)	1-SET 4401 TO 42011 @ 1'-0" TOP (54 BARS/SET) W/ 1-SET 7401 TO 72011 @ 6" BOT (107 BARS/SET)
(H)	1-SET 44110 TO 44111 @ 1'-0" TOP (3 BARS/SET) W/ 1-SET 74110 TO 74111 @ 6" BOT (5 BARS/SET)
(J)	1-SET 4384 TO 40210 @ 1'-0" TOP (11 BARS/SET) W/ 1-SET 7384 TO 70210 @ 6" BOT (21 BARS/SET)
(K)	1-SET 4577 TO 4514 @ 1'-0" TOP (3 BARS/SET) W/ 1-SET 7577 TO 7514 @ 6" BOT (5 BARS/SET)
(L)	1-SET 4600 TO 4547 @ 1'-0" TOP (19 BARS/SET) W/ 1-SET 7600 TO 7547 @ 6" BOT (37 BARS/SET)
(M)	1-SET 4600 TO 4047 @ 1'-0" TOP (19 BARS/SET) W/ 1-SET 7600 TO 7047 @ 6" BOT (37 BARS/SET)
(N)	1-SET 4468 TO 42111 @ 1'-0" TOP (31 BARS/SET) W/ 1-SET 7468 TO 72111 @ 6" BOT (61 BARS/SET)
(P)	1-SET 44611 TO 4285 @ 1'-0" TOP (13 BARS/SET) W/ 1-SET 74611 TO 7285 @ 6" BOT (25 BARS/SET)
(Q)	1-SET 4271 TO 4015 @ 1'-0" TOP (13 BARS/SET) W/ 1-SET 7271 TO 7015 @ 6" BOT (25 BARS/SET)
(R)	1-SET 4476 TO 4032 @ 1'-0" TOP (25 BARS/SET) W/ 1-SET 7476 TO 7032 @ 6" BOT (49 BARS/SET)
(S)	1-SET 45811 TO 4506 @ 1'-0" TOP (14 BARS/SET) W/ 1-SET 7600 TO 7521 @ 6" BOT (27 BARS/SET)
(T)	1-SET 4581 TO 4490 @ 1'-0" TOP (8 BARS/SET) W/ 1-SET 7598 TO 7507 @ 6" BOT (15 BARS/SET)
(U)	1-SET 4415 TO 4215 @ 1'-0" TOP (55 BARS/SET) W/ 1-SET 7415 TO 7215 @ 6" BOT (109 BARS/SET)
(V)	1-SET 4425 TO 4434 @ 1'-0" TOP (2 BARS/SET) W/ 1-SET 7425 TO 7434 @ 6" BOT (3 BARS/SET)
(W)	1-SET 4427 TO 4042 @ 1'-0" TOP (12 BARS/SET) W/ 1-SET 7427 TO 7042 @ 6" BOT (23 BARS/SET)
(X)	1-SET 4577 TO 4514 @ 1'-0" TOP (3 BARS/SET) W/ 1-SET 7577 TO 7514 @ 6" BOT (5 BARS/SET)
(Y)	1-SET 4600 TO 4542 @ 1'-0" TOP (20 BARS/SET) W/ 1-SET 7600 TO 7542 @ 6" BOT (39 BARS/SET)
(Z)	1-SET 4599 TO 4021 @ 1'-0" TOP (20 BARS/SET) W/ 1-SET 7599 TO 7021 @ 6" BOT (39 BARS/SET)



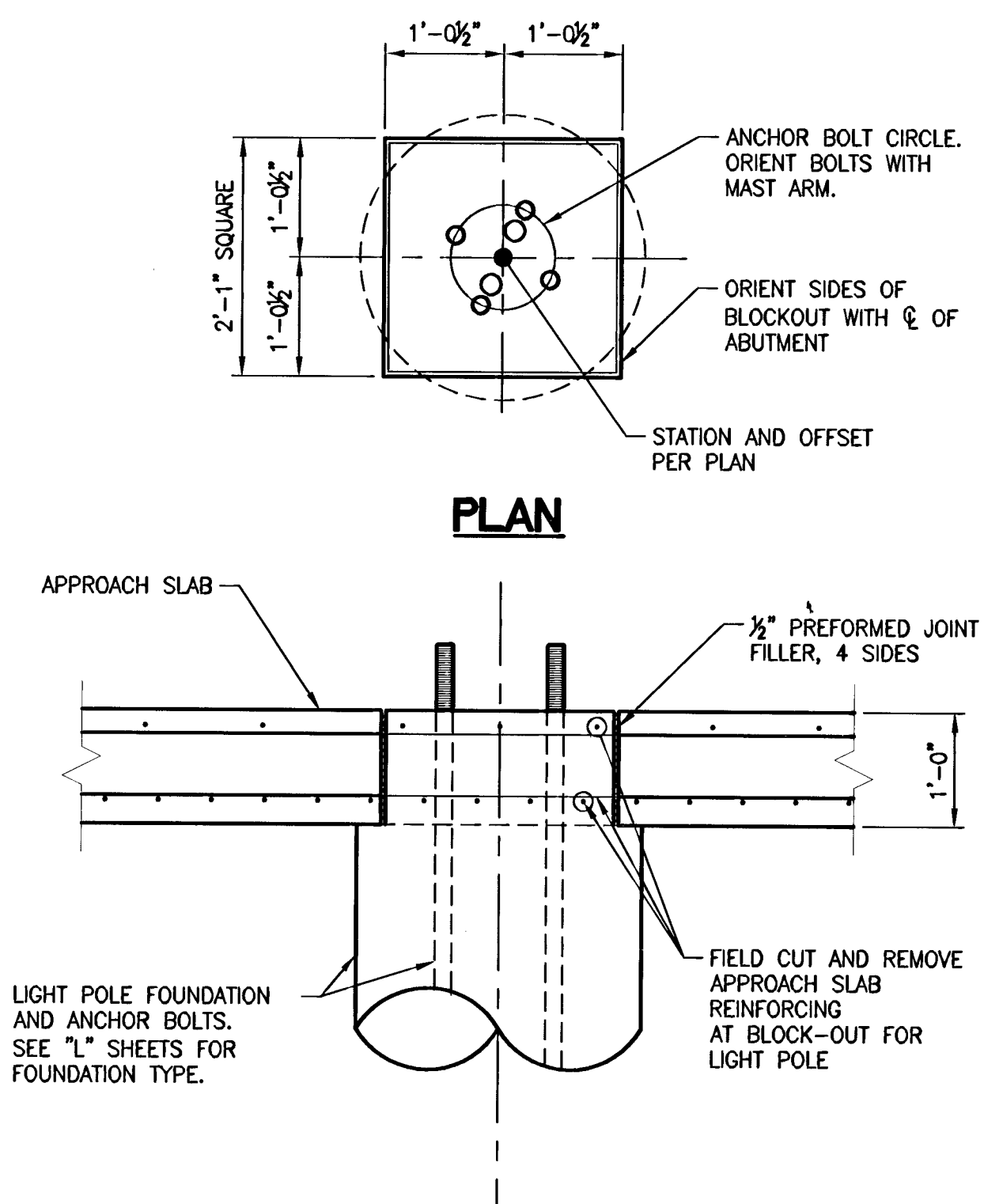
SECTION A-A



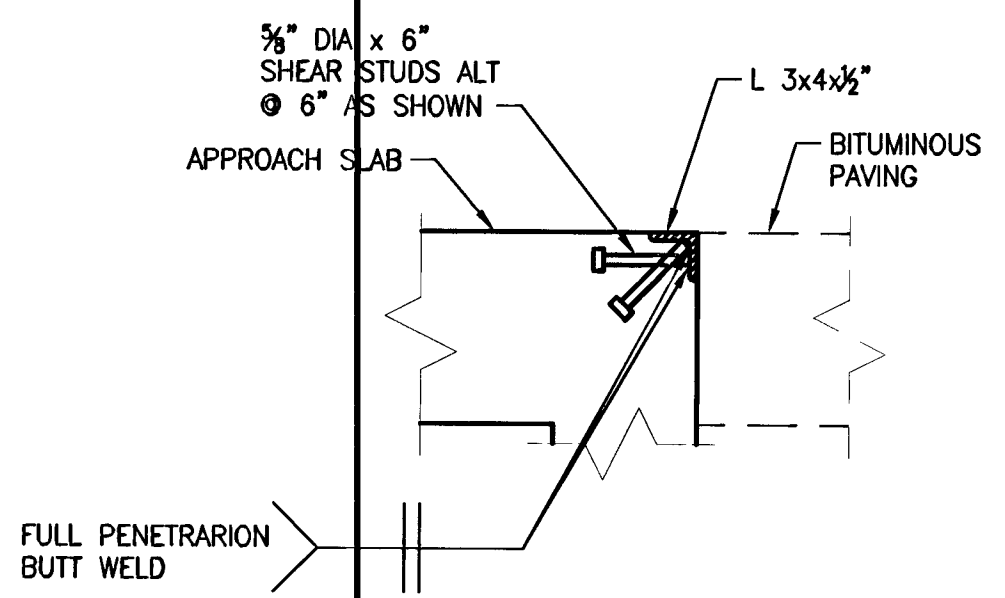
SECTION B-B



SECTION DETAIL 2



SECTION DETAIL 3



DETAIL 1

NOTE:  
GALVANIZE ASSEMBLY AFTER FABRICATION OR USE A588 STEEL.  
FULL PENETRATION BUTT WELD ANY FIELD SPLICE.

PUBLIC WORKS DEPARTMENT		CITY OF LAS VEGAS, NV	
HORSE DRIVE OVER US-95		HORSE DRIVE / US 95 INTERCHANGE	
DESIGNED BY: R. DAVIS	6/20/2008	CHECKED BY: R. DAVIS	6/20/2008
DRAWN BY: A. GRANT	6/20/2008	PROJECT NO.:	8255
SCALE: NONE		VERT: NONE	
SHEET 349 B53		DRAWING NO. 107V3759	
346 OF 463 SHEETS			

114640

I-2896