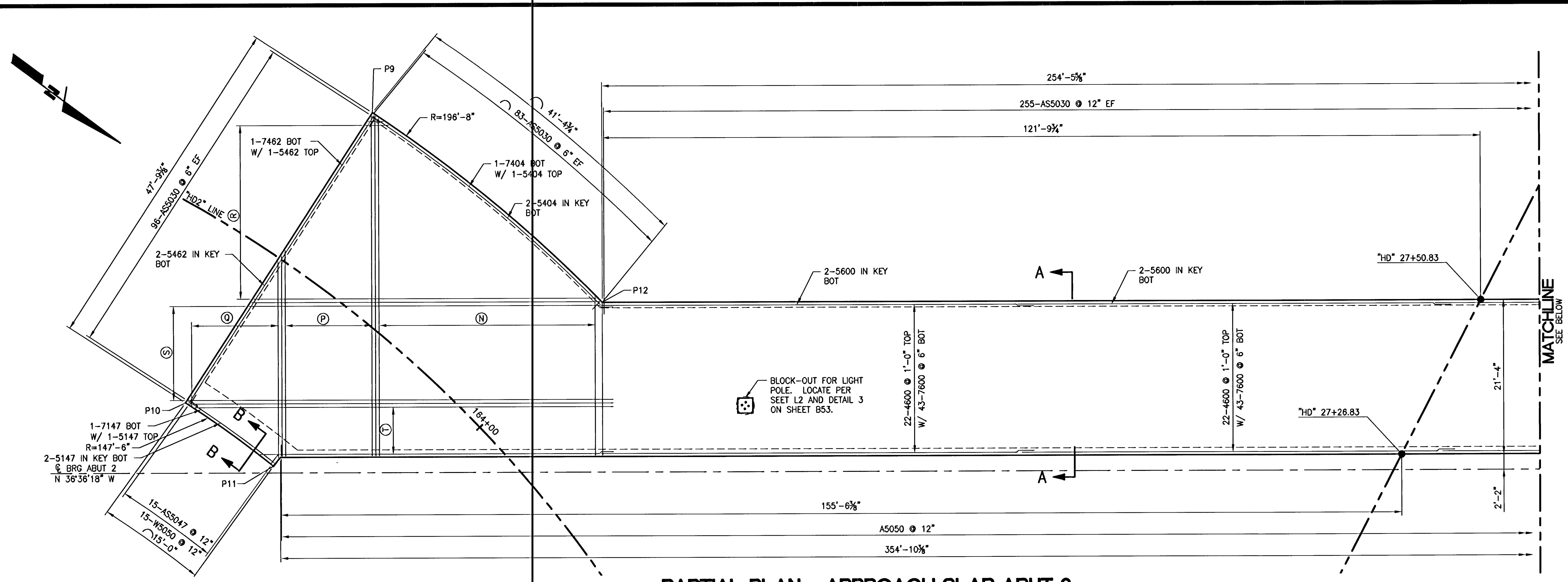
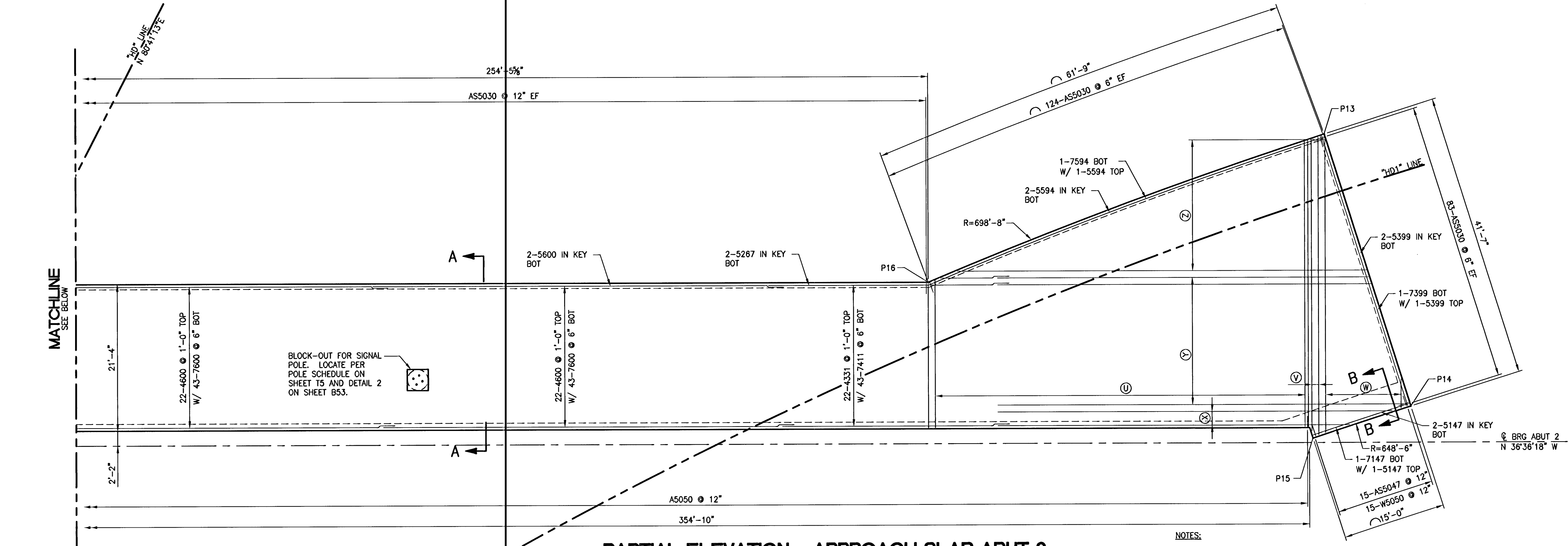


Russ Davis

Wednesday, July 09, 2008 8:54:35 AM



PARTIAL PLAN - APPROACH SLAB ABUT 2



PARTIAL ELEVATION - APPROACH SLAB ABUT 2

- NOTES:
1. FOR SECTIONS A-A, B-B SEE SHEET B53.
 2. FOR APPROACH SLAB POINT DATA AND REINFORCEMENT SCHEDULE SEE SHEET B53.

114639

I-2896

PUBLIC WORKS DEPARTMENT 400 E. STEWART AVE. LAS VEGAS, NV 89101 702-253-6272		CITY OF LAS VEGAS, NV R&H ENGINEERING, INC. CONSULTING STRUCTURAL ENGINEERS 400 E. STEWART AVE., SUITE 200 LAS VEGAS, NEVADA 89101 PHONE (702) 253-7008 • FAX (702) 253-7020	
HORSE DRIVE OVER US-95 APPROACH SLAB ABUT 2		HORSE DRIVE / US 95 INTERCHANGE	
DESIGNED BY: R. DAVIS	6/20/2008	CHECKED BY: R. DAVIS	6/20/2008
DRAWN BY: A. GRANT	6/20/2008	PROJECT NO.:	8255
SCALE: 1" = 8' 1" = 8'		HORIZ. 1" = 8' VERT. 1" = 8'	
SHEET 348 B52 345 OF 453 SHEETS			
DRAWING NO. 107V3759			

P:\06\00374-DWG\HORSEDR. B52.DWG