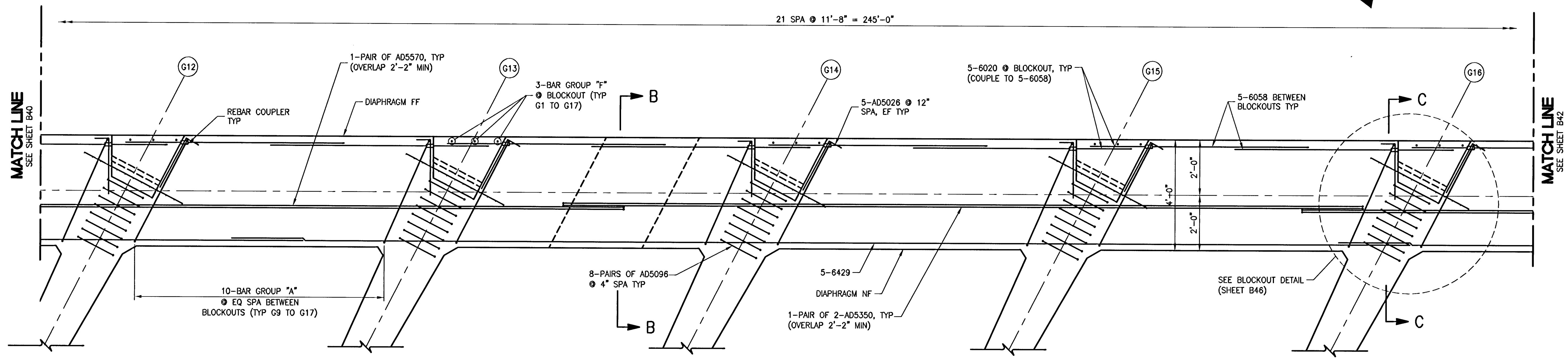
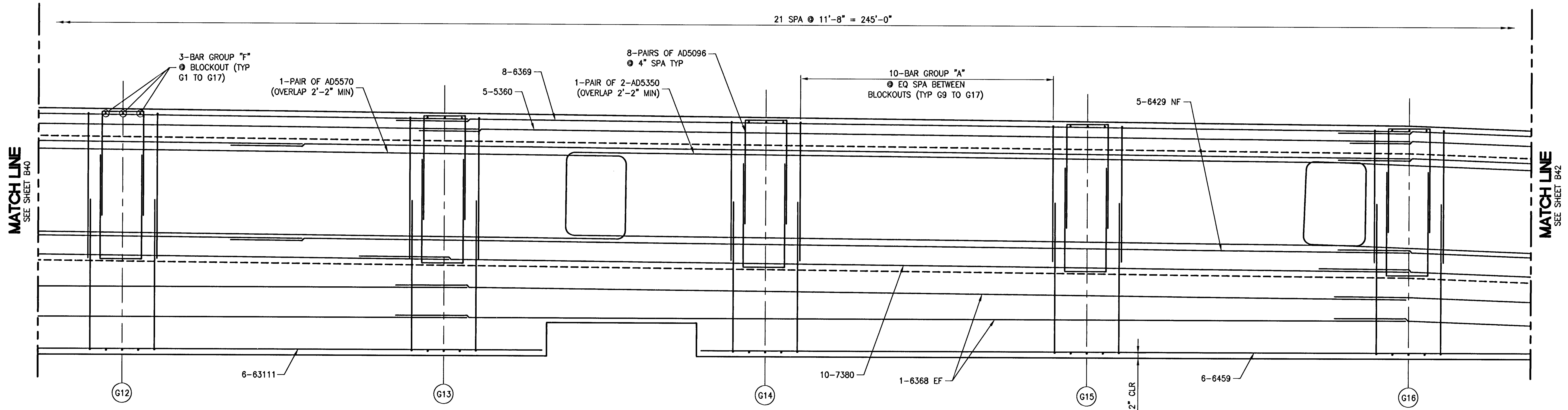


Russ Davis



PARTIAL PLAN



PARTIAL ELEVATION
(LOOKING BACK STATION)

NOTE:
1. FOR SECTIONS A-A, B-B & C-C SEE SHEET B46

- MINIMUM BAR LAPS:
- NO. 4 BAR TO NO. 4 BAR = 1'-8"
 - NO. 5 BAR TO NO. 5 BAR = 2'-2"
 - NO. 6 BAR TO NO. 6 BAR = 2'-7"
 - NO. 7 BAR TO NO. 7 BAR = 3'-3"
 - NO. 8 BAR TO NO. 8 BAR = 4'-3"

114624

Thursday, July 03, 2008 8:04:51 AM

PUBLIC WORKS DEPARTMENT CITY OF LAS VEGAS, NV		R&H ENGINEERING, INC. CONSULTING STRUCTURAL ENGINEERS 840 GREER DRIVE SUITE 200 LAS VEGAS, NEVADA 89119 PHONE (702) 260-7070 FAX (702) 260-7070	
HORSE DRIVE OVER US-95 ABUTMENT DIAPHRAGM 2 PLAN & ELEVATION 3		HORSE DRIVE / US 95 INTERCHANGE	
DESIGNED BY: R. DAVIS	6/30/2008	CHECKED BY: R. DAVIS	6/30/2008
DRAWN BY: A. GRANT	6/30/2008	PROJECT NO: 00037	SCALE: 1" = 2" HORIZ. 1" = 2" VERT.
		<p>7/7/08</p> <p>SHEET 337 B41 334 OF 433 SHEETS</p> <p>DRAWING NO. 107V3759</p>	

I-2896