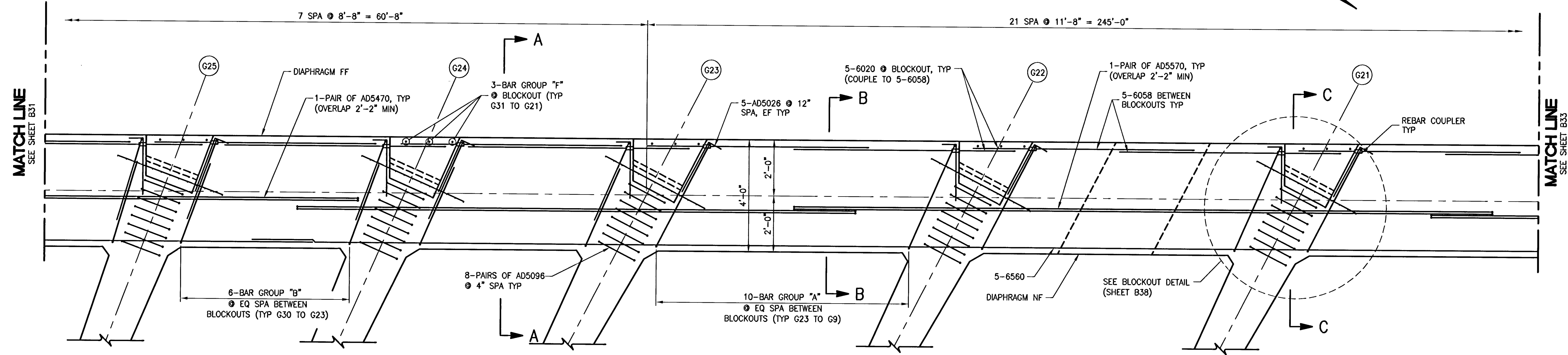
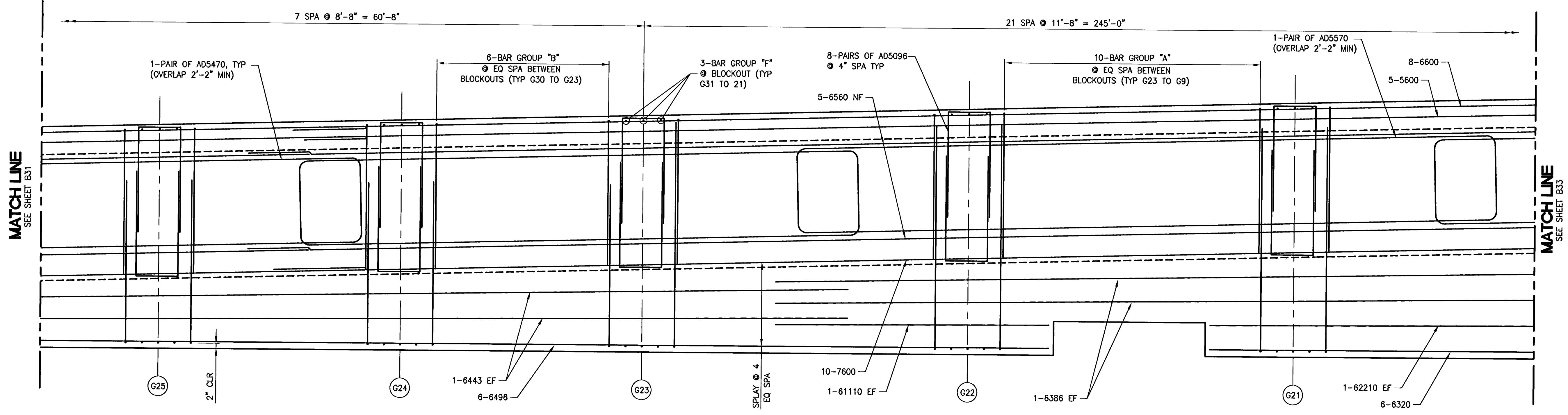


Russ Davis



PARTIAL PLAN



PARTIAL ELEVATION  
(LOOKING BACK STATION)

NOTES:  
1. FOR SECTION A-A, B-B & C-C SEE SHEET B38.

MINIMUM BAR LAPS:  
 NO. 4 BAR TO NO. 4 BAR = 1'-8"  
 NO. 5 BAR TO NO. 5 BAR = 2'-2"  
 NO. 6 BAR TO NO. 6 BAR = 2'-7"  
 NO. 7 BAR TO NO. 7 BAR = 3'-3"  
 NO. 8 BAR TO NO. 8 BAR = 4'-3"

114619

Thursday, July 03, 2008 8:03:20 AM

<b>PUBLIC WORKS DEPARTMENT</b> 400 E. STEWART AVE. LAS VEGAS, NV 89101 702-259-8272		<b>CITY OF LAS VEGAS, NV</b> <b>R&amp;H ENGINEERING, INC.</b> CONSULTING STRUCTURAL ENGINEERS 400 E. STEWART AVE., SUITE 200 LAS VEGAS, NEVADA 89101 PHONE (702) 259-8272 FAX (702) 259-8273	
<b>HORSE DRIVE OVER US-95</b> <b>ABUTMENT DIAPHRAGM 1</b> <b>PLAN &amp; ELEVATION 2</b>		<b>HORSE DRIVE / US 95</b> <b>INTERCHANGE</b>	
DESIGNED BY: R. DAVIS	6/20/2008	DRAWN BY: A. GRANT	6/20/2008
CHECKED BY: R. DAVIS	6/20/2008	PROJECT NO.: 09027	SCALE: 1" = 2' HORIZ. 1" = 2' VERT.
		SHEET <b>328</b> OF <b>433</b> SHEETS DRAWING NO. <b>107V3759</b>	
114619		1-2896	