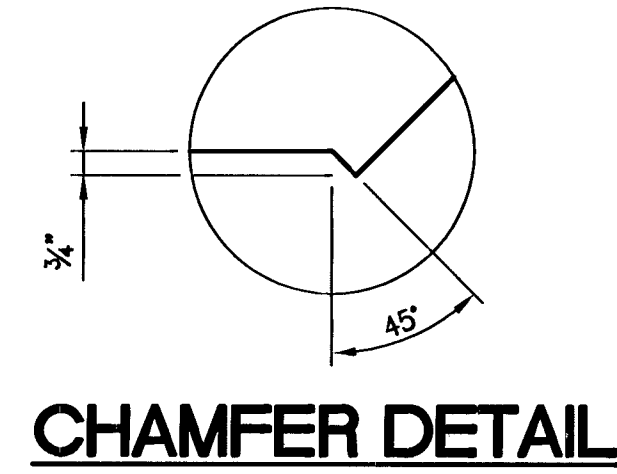
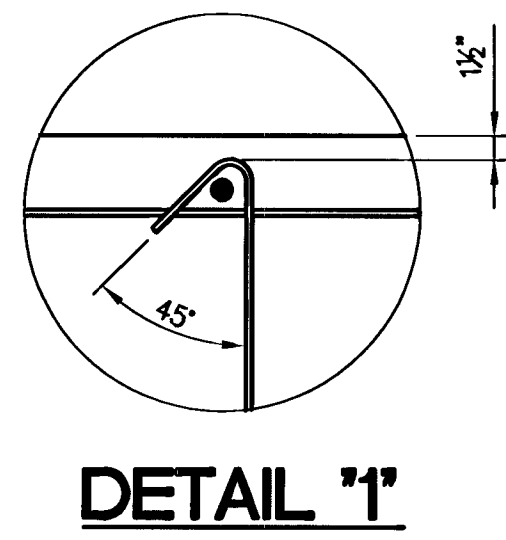
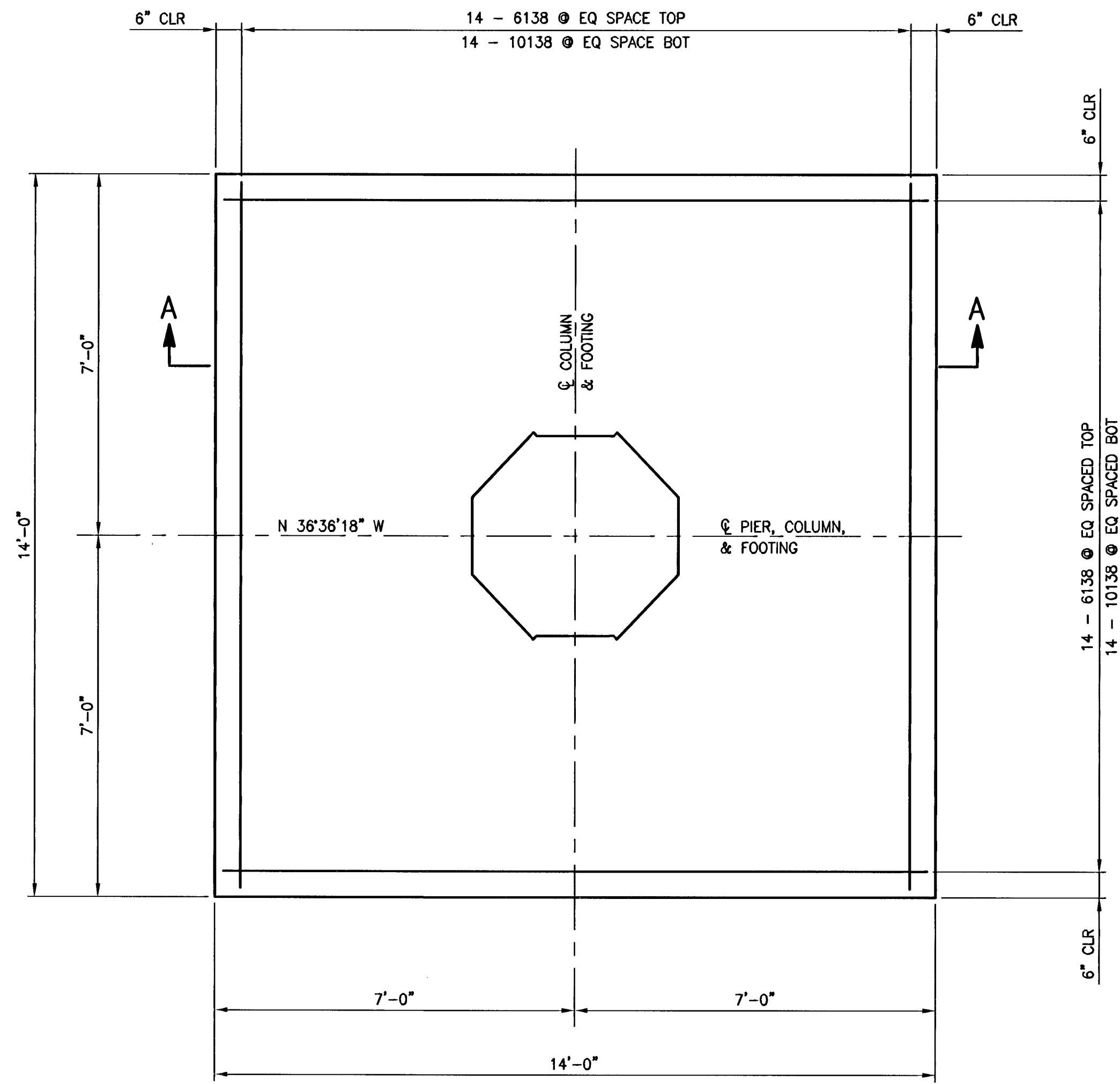


SECTION A-A
(COLUMNS 1 & 14)

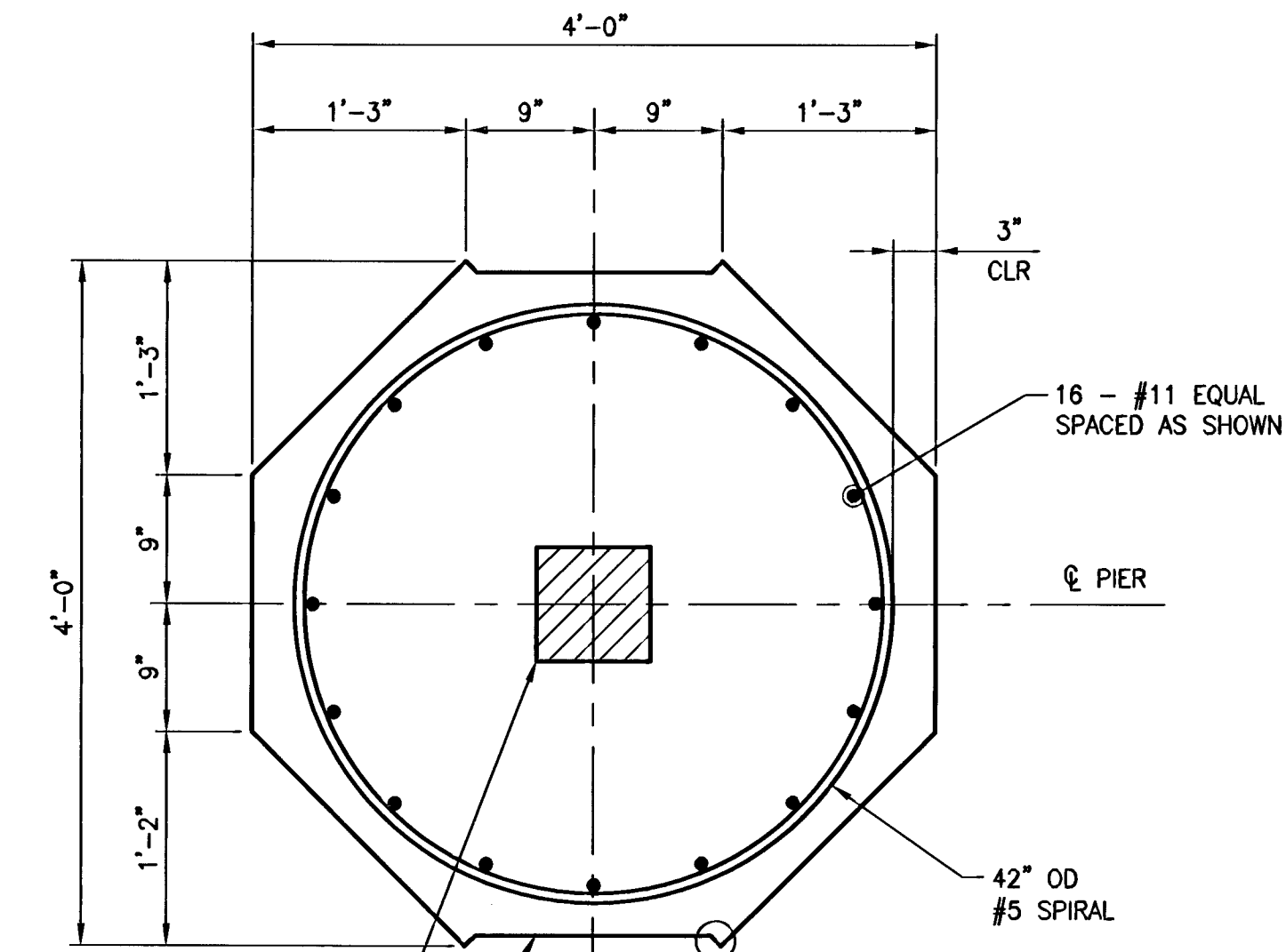


COLUMN	ELEV A	ELEV B	"A" BARS	SPIRAL LENGTH
1	2704.00'	2735.11'	C11409	1357.15'
14	2702.00'	2731.15'	C113810	1145.57'

- NOTES:**
- LAP SPLICES ARE NOT ALLOWED ANYWHERE IN THE COLUMN VERTICAL REINFORCEMENT. NO SPIRAL LAP SPLICES ARE ALLOWED WITHIN 5'-6" FROM THE TOP OR BOTTOM OF THE COLUMN.
 - SPIRAL MAY BE DISCONTINUOUS AT REINFORCEMENT LAYERS NEAR BOTTOM OF CAP AND TOP OF FOOTING. IF A BREAK IS MADE ANYWHERE IN THE SPIRAL REINFORCEMENT, IT SHALL BE TERMINATED WITH AN ADDITIONAL 1/2 TURNS AND EITHER A 135 DEGREE HOOK AROUND A LONGITUDINAL BAR OR WELDING OF THE SPIRAL BACK ON ITSELF. WELD SHALL DEVELOP 125% OF SPECIFIED YIELD STRENGTH OF REINFORCEMENT.
 - ROUGHEN CONCRETE CONSTRUCTION JOINTS TO 1/4" AMPLITUDE. PRIOR TO COLUMN POUR, THOROUGHLY CLEAN THE SURFACE TO REMOVE ALL DIRT AND LAITANCE.



FOOTING PLAN



SECTION B-B

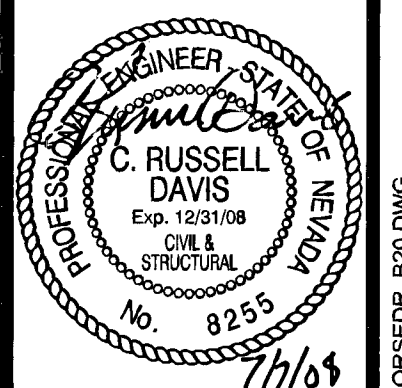
MAINTAIN MIN 8" X 8" CLEAR AREA FOR PLACEMENT AND VIBRATION OF COLUMN CONCRETE

COLOR FINISH "C" IN INSETS (BOTH SIDES OF COLUMN). SEE SHEET B17.

PUBLIC WORKS DEPARTMENT
CITY OF LAS VEGAS, NV
R2H ENGINEERING, INC.
CONSULTING STRUCTURAL ENGINEERS
460 ORCHARD DRIVE, SUITE 200 • LAS VEGAS, NV 89104 • 98119
PHONE (702) 260-7000 • FAX (702) 260-7070

**HORSE DRIVE OVER US-95
PIER COLUMN AND
FOUNDATION DETAILS 1**
**HORSE DRIVE / US 95
INTERCHANGE**

DESIGNED BY: R. DAVIS 6/30/2008
DRAWN BY: A. GRANT 6/30/2008
CHECKED BY: R. DAVIS 6/30/2008
PROJECT NO: 04007
SCALE: NONE HORIZ. NONE VERT.



SHEET **B20**
316 OF 453 SHEETS
DRAWING NO. 107V3759