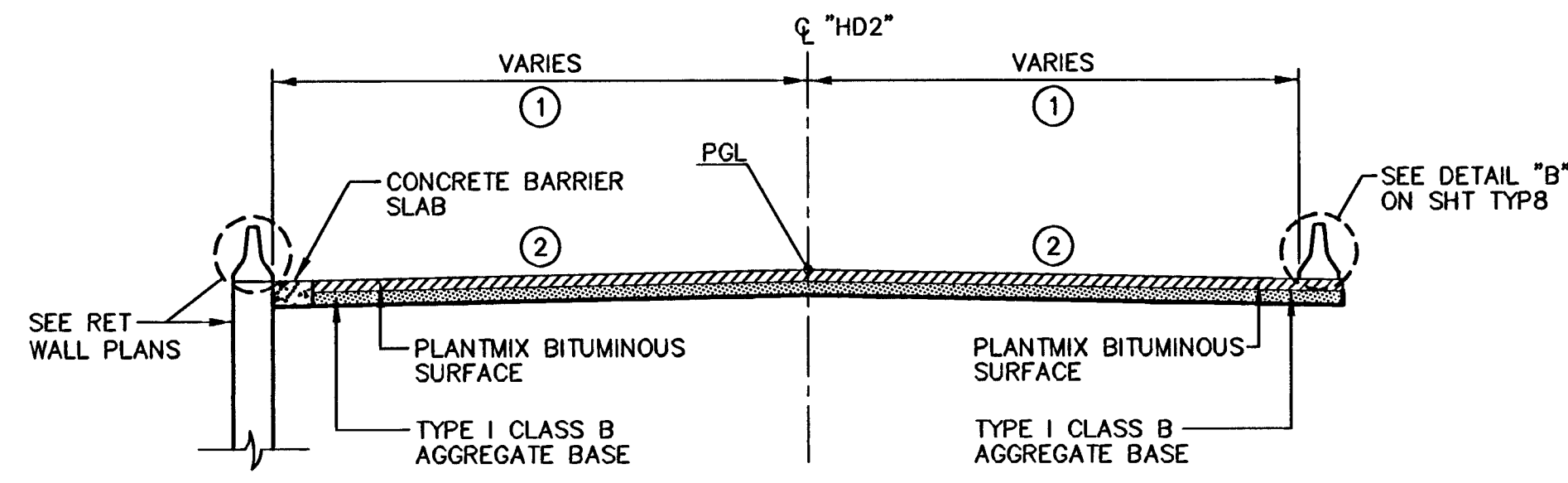
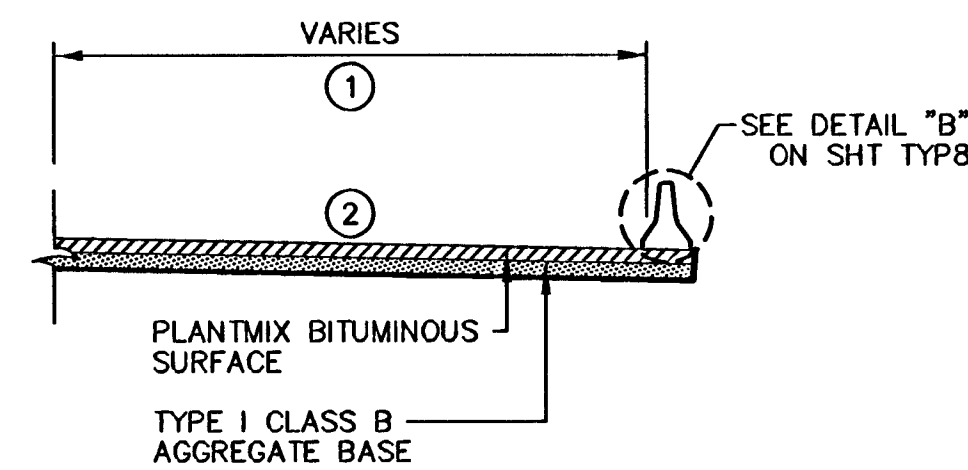


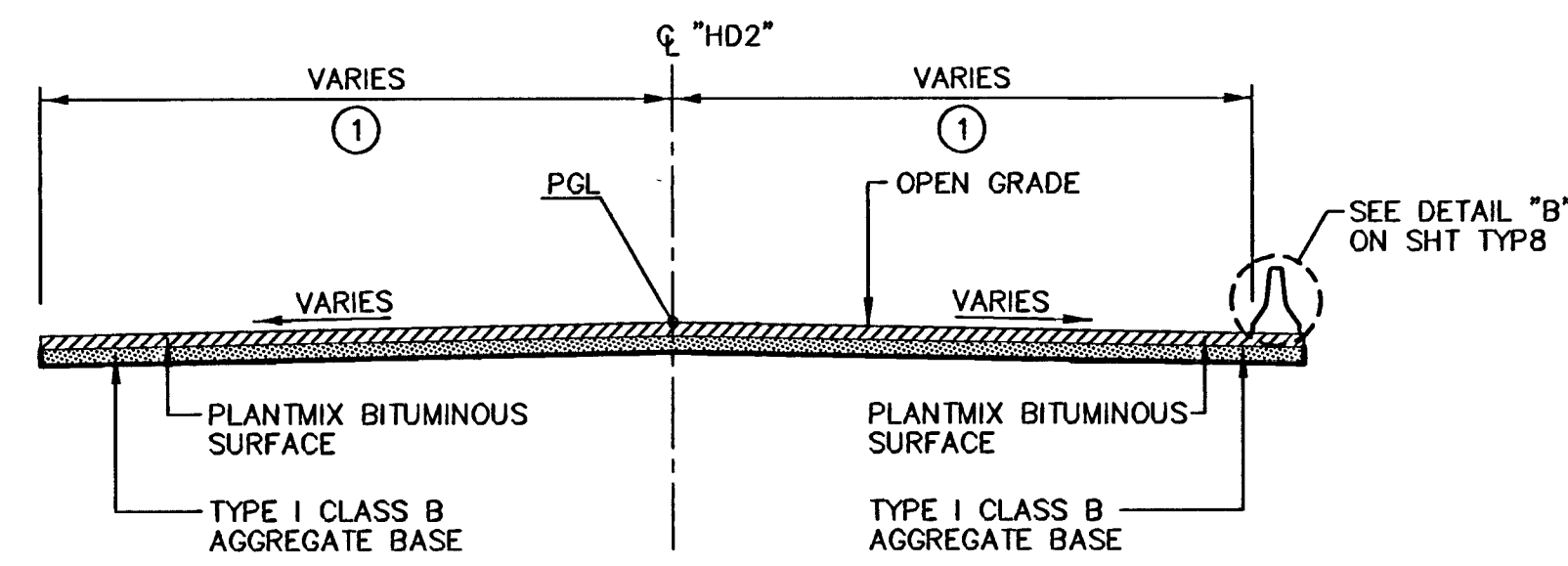
**US 95 NORTH BOUND ON-RAMP "HD2A"**  
 "HD2A" 163+24.56 TO "HD2A" 164+32



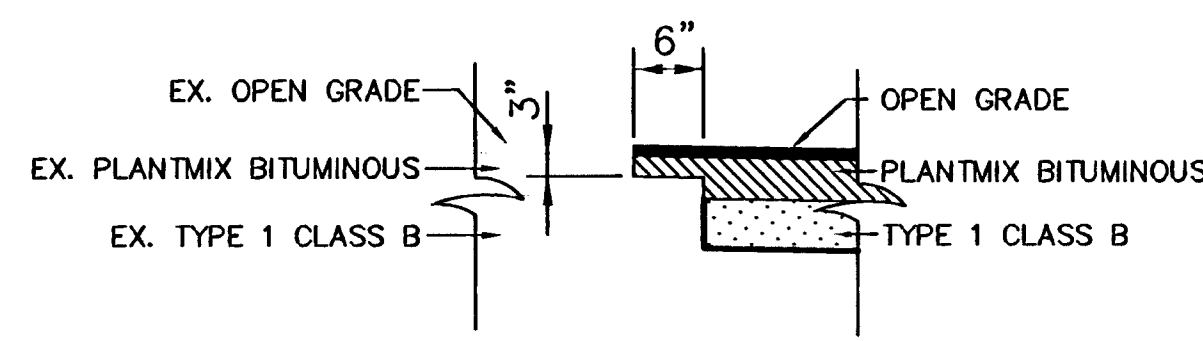
**US 95 NORTH BOUND ON-RAMP "HD2"**  
 "HD2" 164+36.08 TO "HD2" 172+87.22



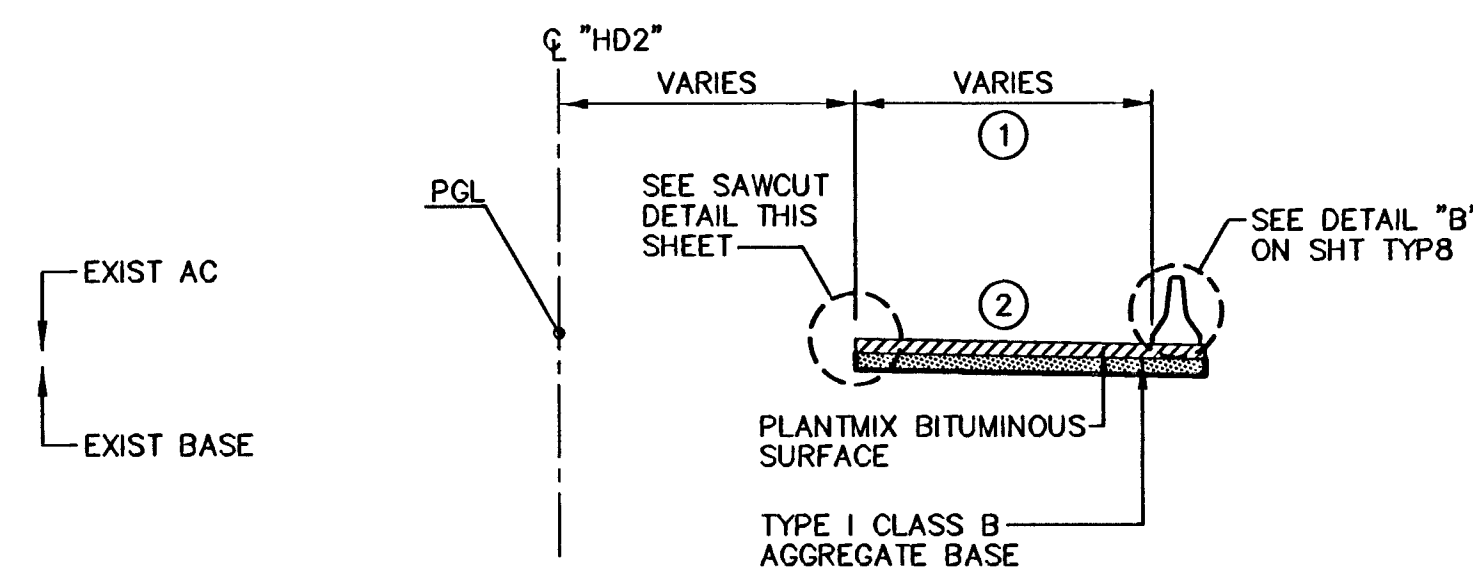
**US 95 NORTH BOUND ON-RAMP "HD2A"**  
 "HD2A" 164+32 TO "HD2A" 165+39.72



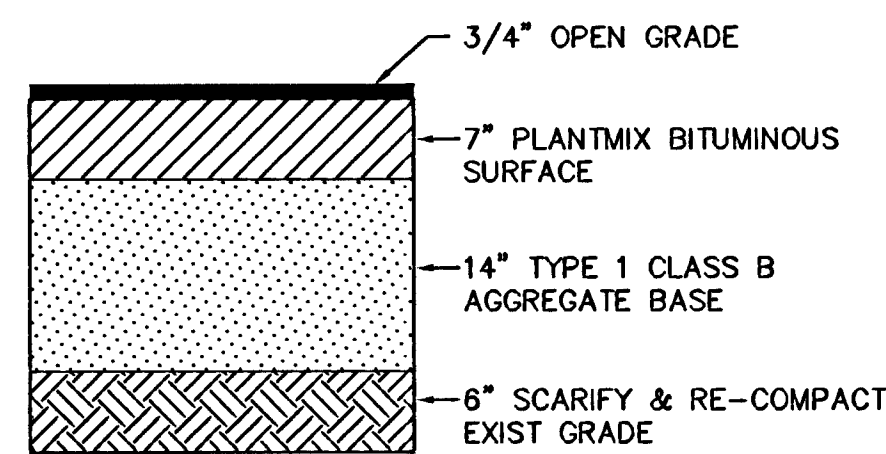
**US 95 NORTH BOUND ON-RAMP "HD2"**  
 "HD2" 172+87.22 TO "HD2" 176+85.05



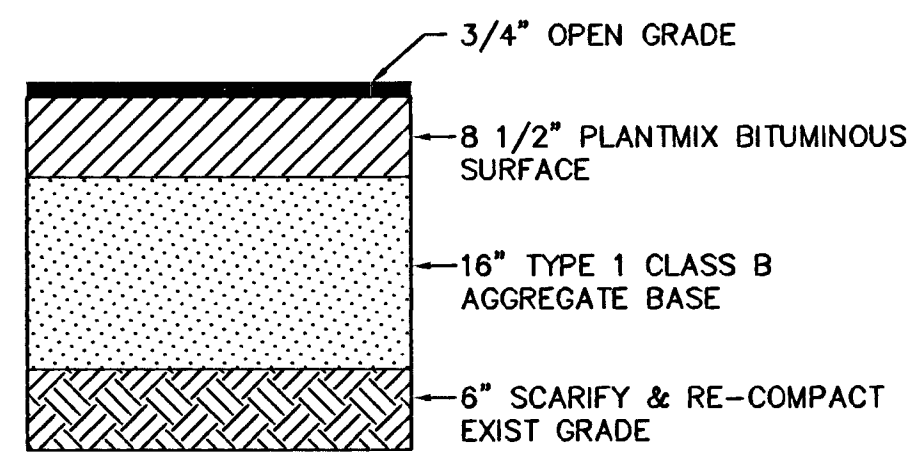
**SAWCUT AT US95 MAINLINE**



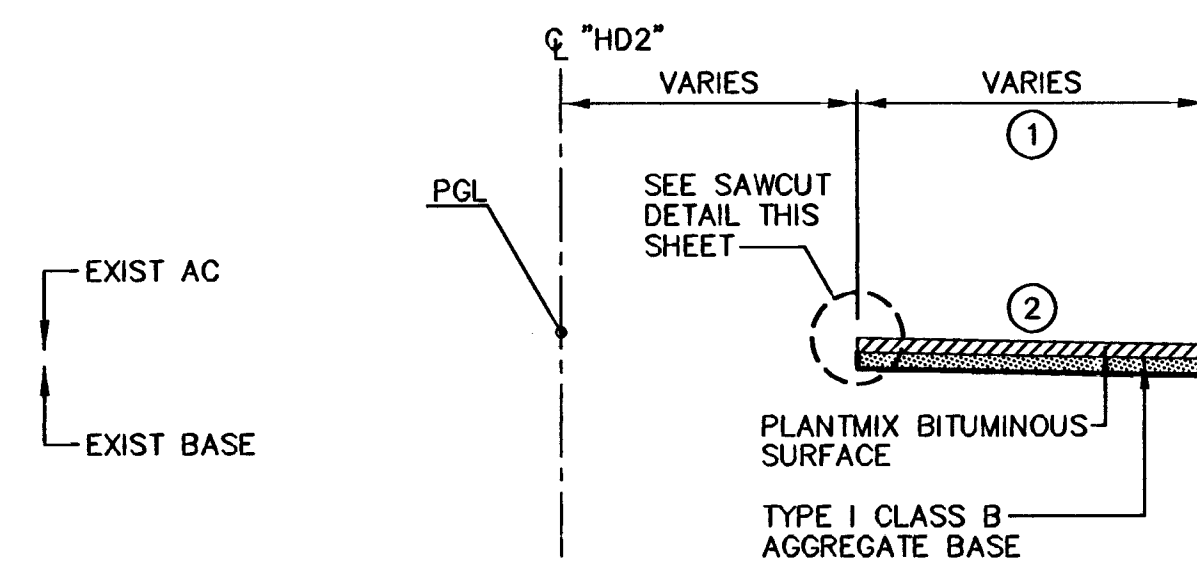
**US 95 NORTH BOUND ON-RAMP "HD2"**  
 "HD2" 176+85.05 TO "HD2" 182+07.77=  
 "XN" 376+58.7± TO "XN" 381+81.68



**US 95 NORTH BOUND ON-RAMP "HD2" & "HD2A"**  
 TYPICAL PAVEMENT SECTION



**US 95 MAINLINE NORTH BOUND**  
 TYPICAL PAVEMENT SECTION



**US 95 NORTH BOUND ON-RAMP "HD2"**  
 "HD2" 182+07.77 TO "HD2" 192+57.77=  
 "XN" 381+81.68 TO "XN" 392+31.7±

1

**TEMPORARY PAVING AT RAMP MEDIANS**  
 SEE SHEET SC2 VOL 2 OF 3

- CONSTRUCTION NOTES:**
- PAVEMENT WIDTH VARIES (SEE CONSTRUCTION PLANS FOR PAVEMENT WIDTHS)
  - CROSS SLOPE VARIES (SEE PROFILE SHT P5 & 5A FOR THE SUPERELEVATION DIAGRAMS)

**NOTE:**

- FOR BARRIER RAIL LOCATIONS SEE ROADWAY PLANS
- FOR FENCE LOCATIONS SEE FENCE PLANS

Call before you Dig  
 811

1-702-227-2929  
 NEVADA POWER ENVIRONMENT AND SAFETY SERVICES DEPARTMENT

1-800-227-2600  
 CLARK COUNTY TRAFFIC OPERATIONS  
 1-702-455-7544

PUBLIC WORKS DEPARTMENT CITY OF LAS VEGAS, NV 777 SOUTH RAINBOW BOULEVARD LAS VEGAS, NEVADA 89146-5146 PH: (702) 87-7555 FAX: (702) 362-2587 nevada consulting engineers & planners • JAO SURVEYS	TYPICAL CROSS SECTIONS US 95 NORTH BOUND ON-RAMP "HD2" & "HD2A"	HORSE DRIVE / US 95 INTERCHANGE	
DRAWN BY: DRP DESIGNED BY: LAW CHECKED BY: MDC PROJECT NO: 6500	06/20/2008 06/20/2008 06/20/2008	SCALE: HORIZ. N/A VERT. N/A	SHEET <b>TYP5R</b> OF SHEETS DRAWING NO. <b>107V3759</b>

115052