

LEGEND:

- DENOTES PBS (PLANTMIX BITUMINOUS SURFACE) SEE TYP CROSS SECTIONS
- DENOTES CONC BARRIER SLAB (SEE RETAINING WALL PLANS)
- DENOTES SAWCUT LINE FOR PBS (PLANTMIX BITUMINOUS SURFACE)
- "HD1" DENOTES NEW CL HORSE DR/FT APACHE RD RAMP 1
- AUTHORIZATION TO ENTER PROPERTY
- RIGHT-OF-WAY
- NDOT RIGHT-OF-WAY
- 16' NDOT MAINTENANCE ACCESS
- EXIST NDOT RIGHT-OF-WAY
- EXIST CLV RIGHT-OF-WAY

PROTECT IN PLACE:

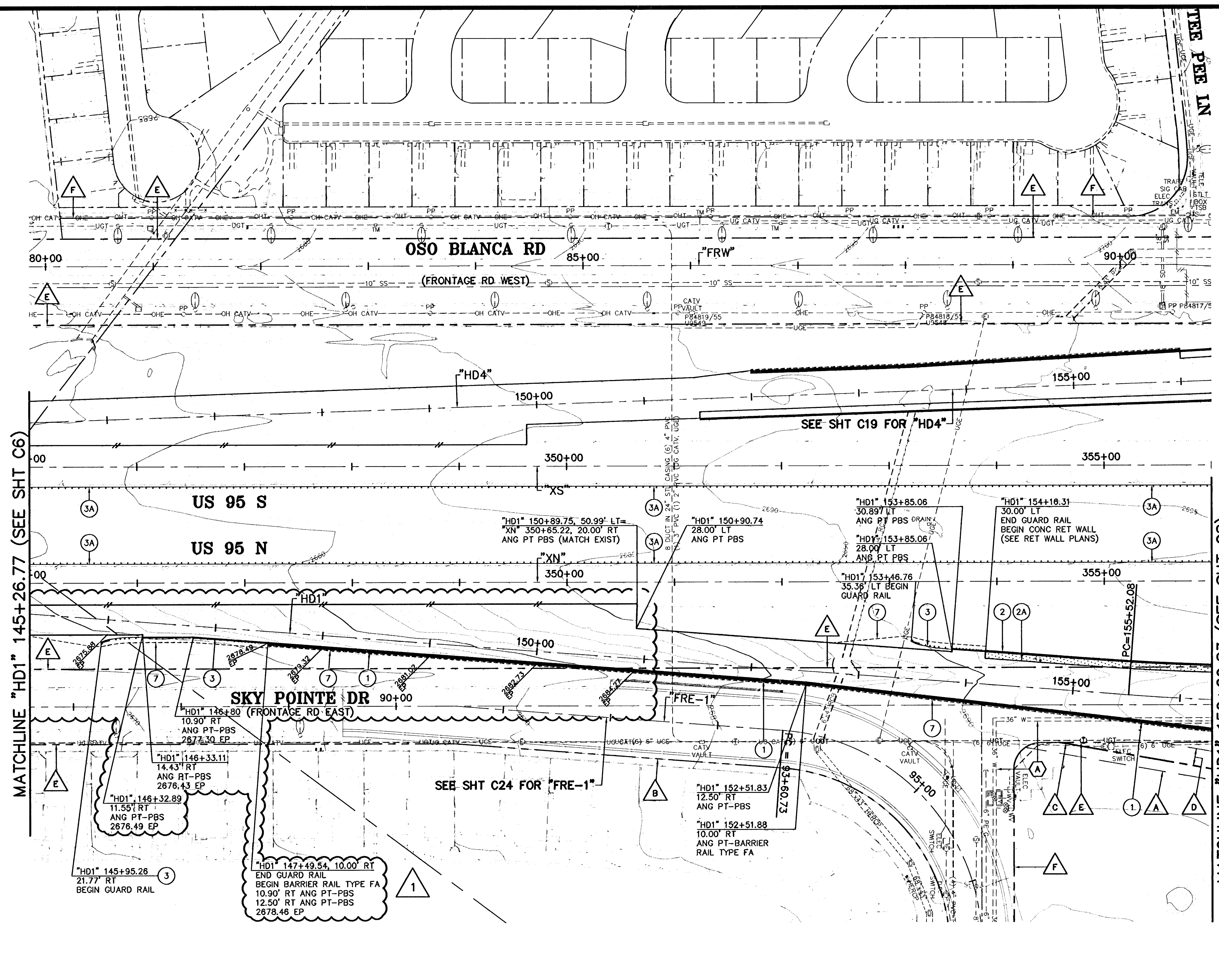
- EXIST LVVWD 36" WATER LINE

CONSTRUCTION NOTES:

- INSTALL BARRIER RAIL TYPE FA PER NDOT STD DWG NO. R-8.6.2
- INSTALL CONC RET WALL (SEE RET WALL PLANS)
- INSTALL CONC BARRIER SLAB (SEE RET WALL PLANS)
- INSTALL GALVANIZED GUARD RAIL (TRIPLE CORRUGATION); GUARD RAIL-BARRIER RAIL CONNECTION; GUARD RAIL TERMINAL (FLARED) PER NDOT STD DWG NO. R-8.1.1 CONTRACTOR TO FIELD VERIFY HORIZONTAL & VERTICAL LOCATION OF ANY NEW AND/OR EXISTING UNDERGROUND FACILITIES PRIOR TO INSTALLATION OF GUARD RAIL
- INSTALL GALVANIZED GUARD RAIL PER NDOT STD DWG R-8.1.1
- GRADING HINGE LINE (SEE TYP SECTIONS, STORM DRAIN & GRADING PLANS)

NOTES:

1. FOR STORM DRAIN REMOVAL, PROTECT IN PLACE & GRADING INFORMATION SEE SHEET SD1 THRU SD43
2. FOR UTILITY ADJUSTMENT & RELOCATION SEE SHEET U1 THRU U13
3. FOR CONCRETE RETAINING WALL SEE SHEET RW1 THRU RW40
4. FOR "HD1" PROFILE SEE SHEET P4



APPROVED
 1st App'd. 7/16/08

 LAS VEGAS VALLEY WATER DISTRICT
 LVVWD PROJECT # H80315
 DATE 12/2/08

AVOID OVERHEAD POWER LINE CONTACT IT'S COSTLY
Call before you Overhead
 1-702-227-2929
 NEVADA POWER ENVIRONMENT AND SAFETY SERVICES DEPARTMENT

Call before you Dig
 Avoid cutting, underground utility lines, it's costly.
Call 811
 1-800-227-2800
 OR
 1-702-455-7544

PUBLIC WORKS DEPARTMENT CITY OF LAS VEGAS, NV 400 E. STEWART AVE. LAS VEGAS, NV 89101 702-228-0272		277 SOUTH HANSON BOULEVARD LAS VEGAS, NEVADA 89148-5148 PH. (702) 877-7500 FAX (702) 362-2977 nevada CONSULTING ENGINEERS • PLANNERS • LAND SURVEYORS	
ROADWAY PLAN "HD1" 145+26.77 TO "HD1" 156+29.83	HORSE DRIVE / US 95 INTERCHANGE	DRAWN BY: DRF	DESIGNED BY: LAW
DATE: 06/20/2008	DATE: 06/20/2008	CHECKED BY: KDG	PROJECT NO.: 6500
SCALE: 1"=50'	HORIZ. N/A	VERT. N/A	
SHEET C7R OF SHEETS		DRAWING NO. 107V3759	

115042