

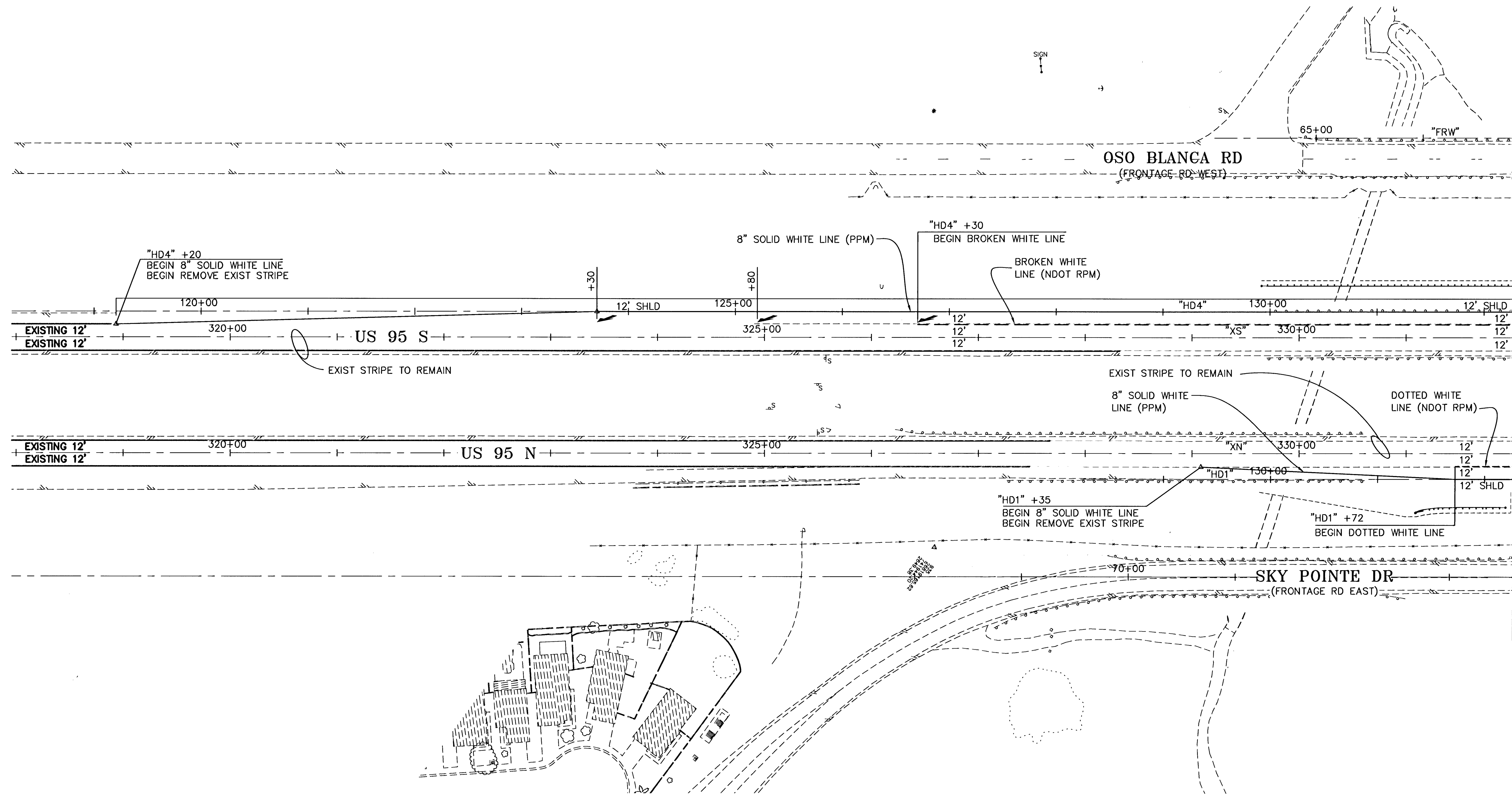
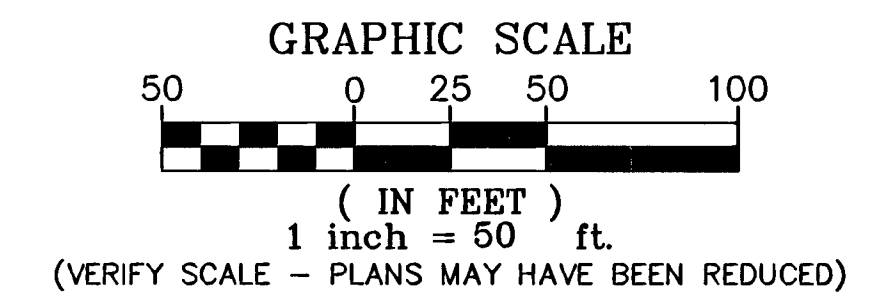
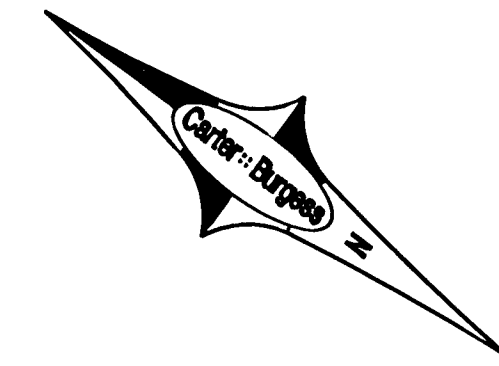
**NOTES:**

ALL LANE DIMENSIONS ARE FROM FACE OF BARRIER RAIL OR FACE OF MEDIAN TO LIP OF GUTTER OR EDGE OF PAVEMENT.

WHERE PPM, PMF AND RPM ARE CALLED OUT TO BE CONSTRUCTED IN ACCORDANCE WITH THE USCCA, ALL MATERIALS USED IN THE INSTALLATION SHALL BE IN ACCORDANCE WITH NDOT QPL.

**ABBREVIATIONS:**

NDOT = NEVADA DEPARTMENT OF TRANSPORTATION  
 PMF = PAVEMENT MARKING FILM  
 PPM = POLYUREA PAVEMENT MARKINGS  
 RPM = RAISED PAVEMENT MARKINGS  
 QPL = QUALIFIED PRODUCTS LIST



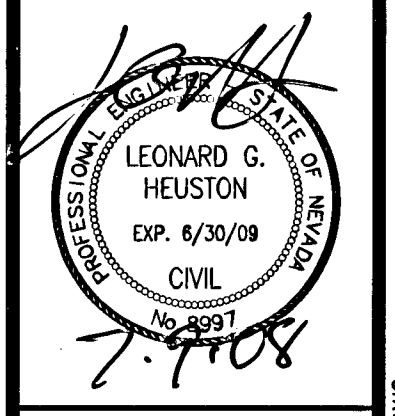
MATCHLINE "XN" 332+00 (SEE SHT ST-6)

**PUBLIC WORKS DEPARTMENT**  
 400 E. STEWART AVE.  
 LAS VEGAS, NV 89101  
 702-229-8272

**Cartel Burgess**  
 CONSULTING ENGINEERS  
 4000 S. RAYBURN AVE., SUITE 200  
 LAS VEGAS, NV 89119  
 (702) 735-4444

**STRIPING PLAN**  
 "XN" 318+00 TO "XN" 332+00  
**HORSE DRIVE / US 95 INTERCHANGE**

DRAWN BY: LR	07/03/2008
DESIGNED BY: CM	07/03/2008
CHECKED BY: LH	07/03/2008
PROJECT NO: 241267	SCALE: 1"=50' HORIZ. N/A VERT.



SHEET  
**ST-5**  
 OF 453 SHEETS  
 DRAWING NO.  
**107V3759**

REV	DATE	BY

SHEET\_STRIPING.DWG

114541