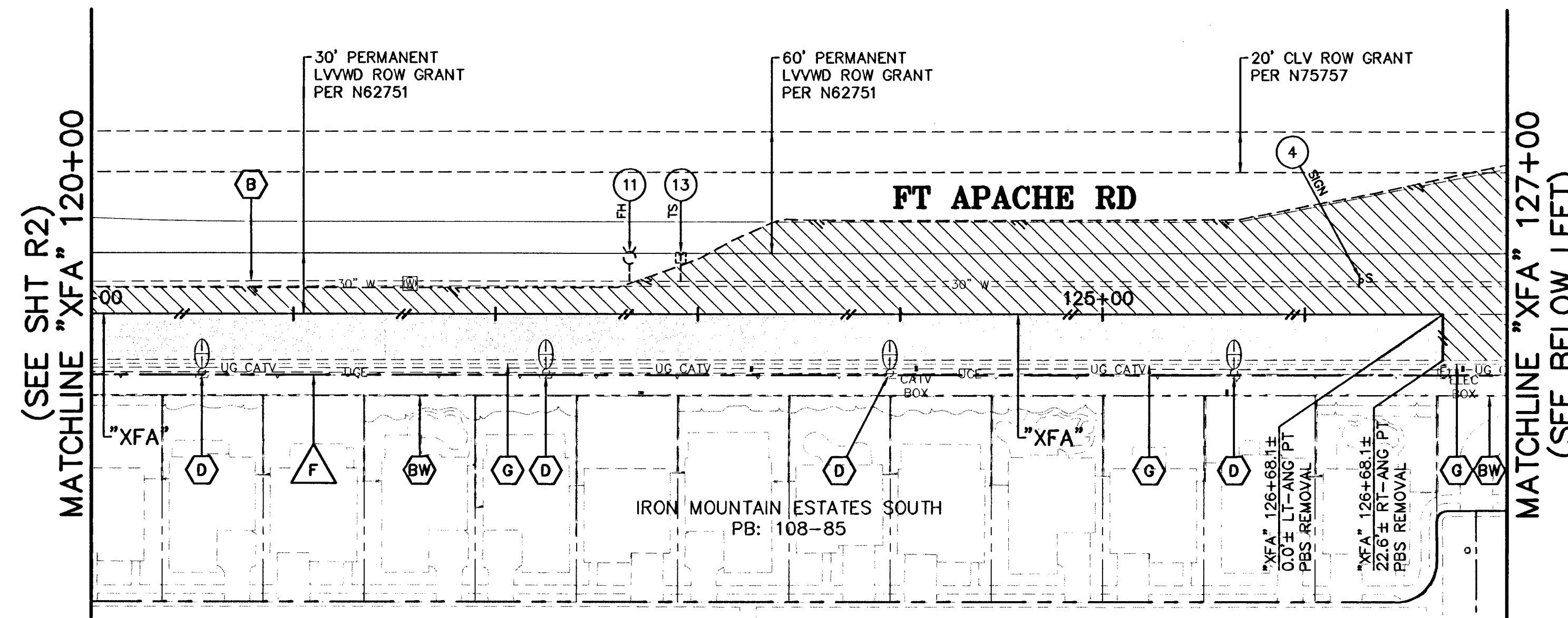
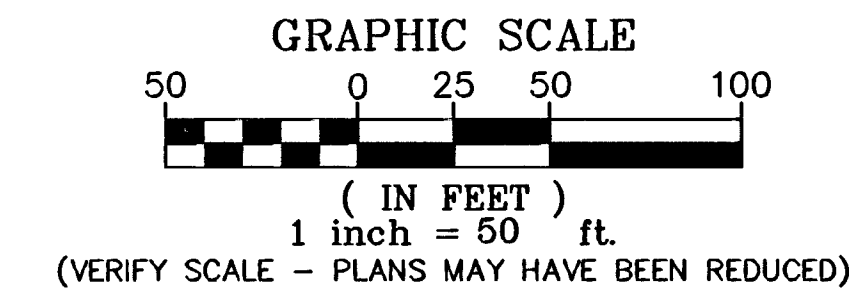


APN 125-07-501-004  
PORTION OF GL5  
USA



**LEGEND**

- DENOTES PBS (PLANTMIX BITUMINOUS SURFACE) REMOVAL
- DENOTES SAWCUT LINE FOR PBS (PLANTMIX BITUMINOUS SURFACE) REMOVAL
- DENOTES EXIST PBS (PLANTMIX BITUMINOUS SURFACE) TO REMAIN IN PLACE
- "XFA" DENOTES EXIST CL FT APACHE RD
- "IM" DENOTES EXIST CL IRON MOUNTAIN RANCH
- RIGHT-OF-WAY
- EXIST RIGHT-OF-WAY

**PROTECT IN PLACE:**

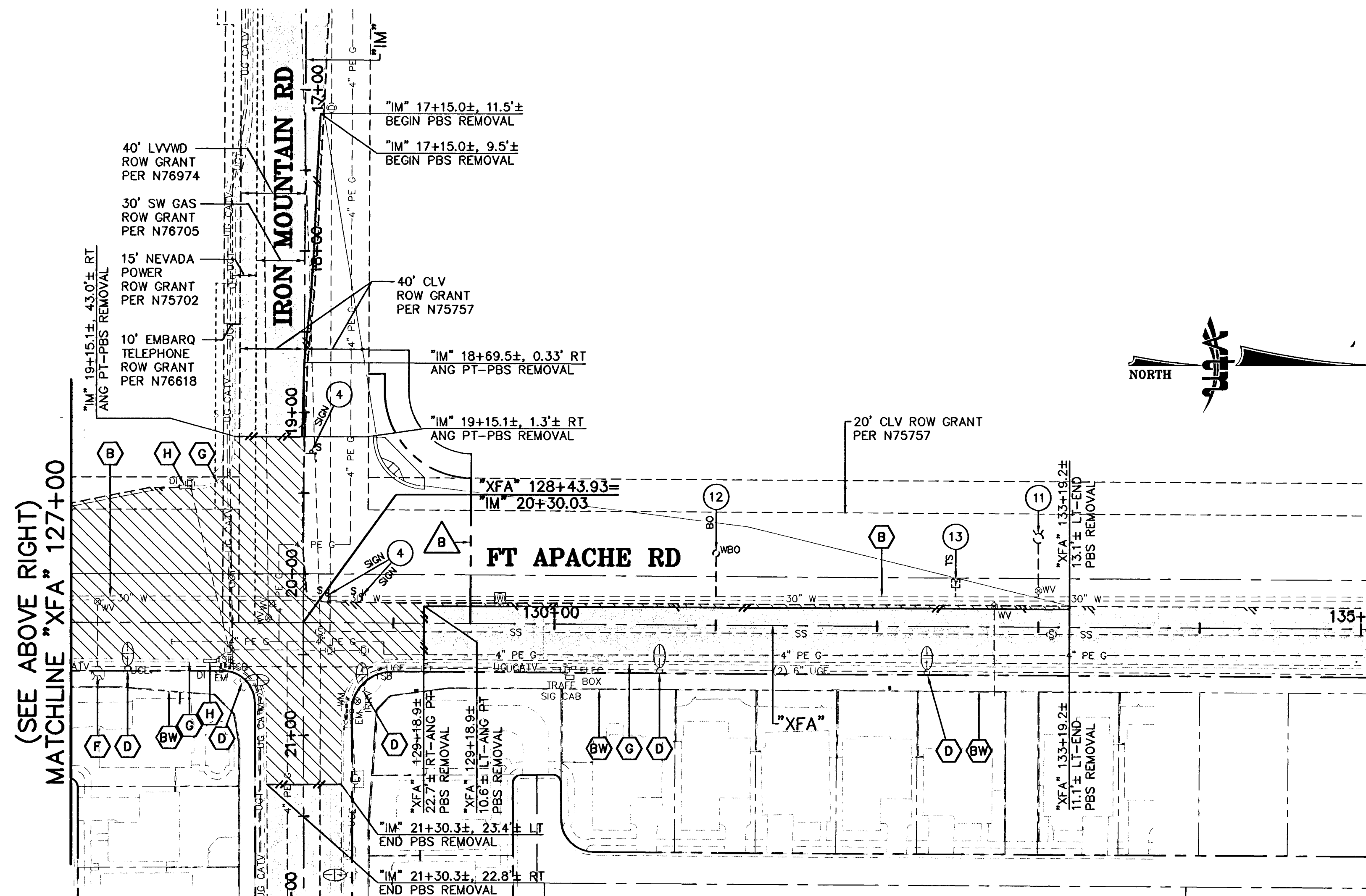
- EXIST LVVWD 30" WATER LINE
- EXIST BLOCK WALL
- EXIST STREET LIGHT
- EXIST FIRE HYDRANT
- EXIST CURB, GUTTER & SIDEWALK
- EXIST DROP INLET

**REMOVAL NOTES:**

- EXIST SIGN
- EXIST FH TO BE REMOVED & RELOCATED (SEE UTILITY PLANS FOR RELOCATION)
- EXIST BO TO BE REMOVED & RELOCATED (SEE UTILITY PLANS FOR RELOCATION)
- EXIST TEST STATION TO BE REMOVED & RELOCATED (SEE SHT U1 THRU U13 FOR RELOCATION)

**NOTES:**

1. FOR STORM DRAIN REMOVAL, PROTECT IN PLACE & GRADING INFORMATION SEE SHEET SD1 THRU SD43
2. FOR ALL EXIST UTILITIES TO BE ADJUSTED TO FINISH GRADE OR TO BE RELOCATED SEE SHEET U1 THRU U13
3. NEW ROADWAY GEOMETRICS SHOWN FOR REMOVAL CLARIFICATION



APPROVED  
*Deborah Morgan* 7/14/08  
LAS VEGAS VALLEY WATER DISTRICT  
LVVWD PROJECT # H80315  
DATE

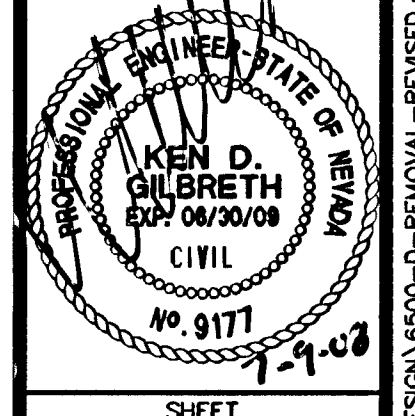
*John B. ...* 7/14/08  
LAS VEGAS FIRE MARSHAL  
DATE

Call before you Dig  
Call 811  
1-702-227-2929  
NEVADA POWER ENVIRONMENT AND SAFETY SERVICES DEPARTMENT

PUBLIC WORKS DEPARTMENT  
CITY OF LAS VEGAS, NV  
400 E. STEWART AVE  
LAS VEGAS, NV 89101  
702-229-4272

REMOVAL PLAN  
"XFA" 120+00 TO "XFA" 133+19.2'  
HORSE DRIVE / US 95  
INTERCHANGE

DRAWN BY: 06/20/2008  
DESIGNED BY: 06/20/2008  
CHECKED BY: 06/20/2008  
PROJECT NO: SCALE: 1"=40'  
6500 N/A VERT.



SHEET  
R2A  
27 OF 453 SHEETS  
DRAWING NO.  
107V3769

114199

I:\6500\DWG\DESIGN\6500-D-REMOVAL-REVISED.dwg