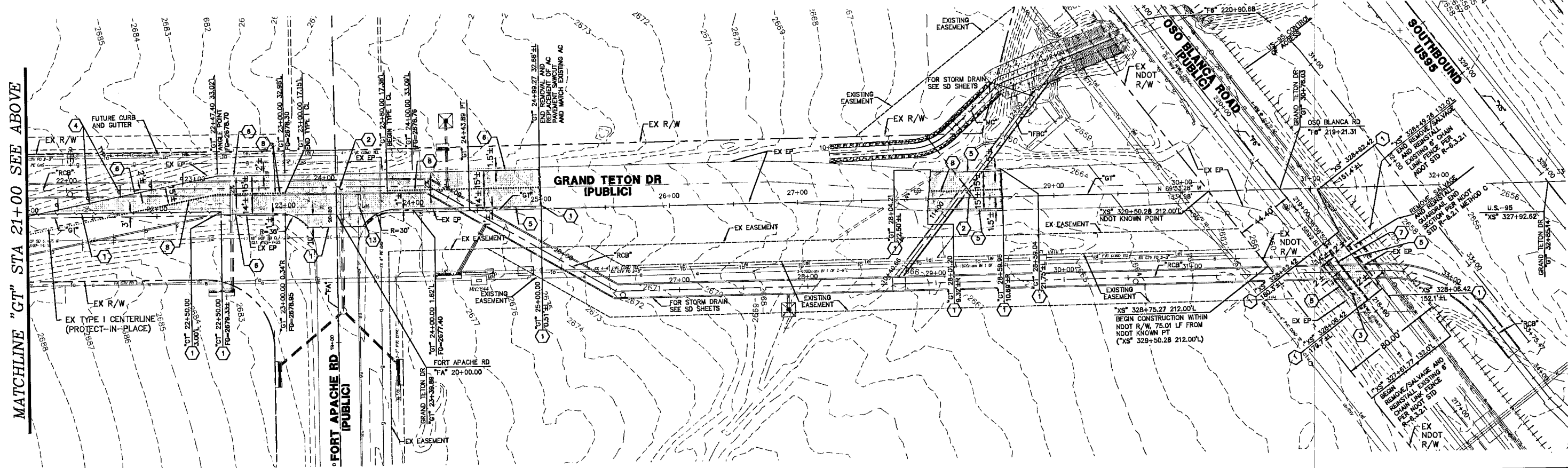


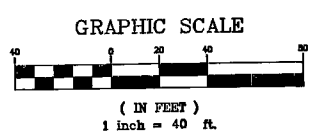
PLAN - GRAND TETON DRIVE
SCALE: 1"=40'



PLAN - GRAND TETON DRIVE
SCALE: 1"=40'

CONSTRUCTION NOTES

- 1 SAWCUT LINE
- 2 REMOVE EXISTING AC PAVEMENT, AFTER STORM DRAIN INSTALLATION CONSTRUCT 2" AC OVER 4" TYPE II AGGREGATE BASE TO ORIGINAL FINISHED GRADE.
- 3 REMOVE EXISTING AC PAVEMENT, AFTER RCB INSTALLATION CONSTRUCT 3/4" OPEN GRADE OVER 4" AC OVER 8" TYPE II AGGREGATE BASE OR MATCH EXISTING PAVEMENT SECTION. RESTORE SURFACE TO ORIGINAL FINISHED GRADE.
- 4 REMOVE AND RE-INSTALL OBJECT MARKERS AT 25' O.C.
- 5 4" WHITE PAINTED EDGE LINE. ALIGN WITH EXISTING EDGE LINE.
- 6 8" WHITE PAINTED EDGE LINE. ALIGN WITH EXISTING EDGE LINE.
- 7 BROKEN YELLOW PAINTED CENTERLINE. ALIGN WITH EXISTING CENTERLINE.
- 8 TYPE I CENTERLINE PER USD NO. 244. ALIGN WITH EXISTING CENTERLINE.
- 9 STORAGE LANE LINE PER USD NO. 246.
- 10 WHITE PAVEMENT "ARROW" (PMF).
- 11 WHITE PAVEMENT "ONLY" (PMF).
- 12 ADJUST WATER VALVE BOX TO FINISHED GRADE PER UDACS PLATE NO.8 VALVE SHALL BE ACCESSIBLE AT ALL TIMES.
- 13 ADJUST MANHOLE TO FINISHED GRADE MANHOLE SHALL BE ACCESSIBLE AT ALL TIMES.



LEGEND
REMOVE EXISTING AC AND CONSTRUCT NEW AC (SEE CONSTRUCTION NOTES 2 & 3)

APPROVED FOR CONSTRUCTION
1ST NAD'D 12-01-08
[Signature]
LAS VEGAS VALLEY WATER DISTRICT - PROJECT # 114322 DATE

Call before you Undergo
1-702-455-7511
1-702-455-5000
1-702-455-7544

Call before you Overhead
1-702-227-2829
1-702-227-2829
1-702-455-7544

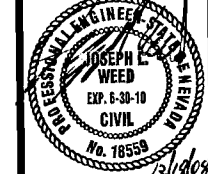
NO.	DATE	DESCRIPTION	APPD

DEPARTMENT OF PUBLIC WORKS
400 EAST STEWART
LAS VEGAS, NEVADA 89101
(702) 229-6276

pogemeyer
design group, inc.

TITLE: GRAND TETON DRIVE STORM DRAIN
SHEET: PAVEMENT REMOVAL AND RECONSTRUCTION PLAN STA 9+00 TO STA 33+00

DRAWN BY: BMR	11/20/07
DESIGNED BY: JSL/BMR	11/20/07
CHECKED BY: JSL/AJW	07/03/08
PROJECT NO: 03188-C	SCALE: 1"=40' VERT: N/A



Sheet **C-1**
7 of 30
DRAWING NO. 1073757

HTE NO. 22726

MATCHLINE "GT" STA 21+00 SEE BELOW

MATCHLINE "GT" STA 21+00 SEE ABOVE

114939