

**BASIS OF BEARING**

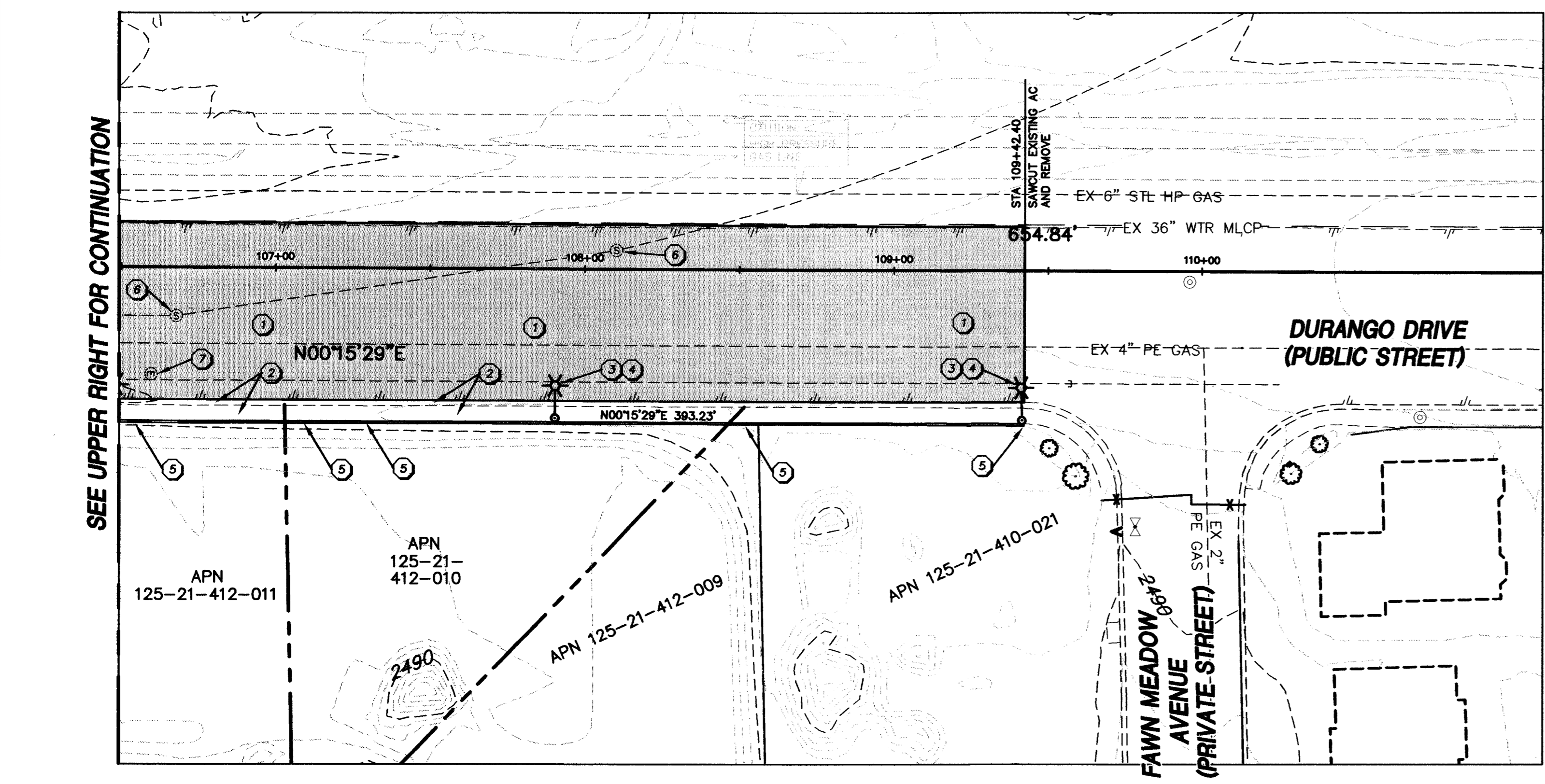
THE BASIS OF BEARINGS FOR THIS PROJECT IS GRID NORTH AS DEFINED BY THE NEVADA COORDINATE SYSTEM OF 1983 (NCS83), EAST ZONE, (2701), DETERMINED BY GS CONTROL POINTS, 804 AND 808, AS SHOWN ON A RECORD OF SURVEY ON FILE IN THE CLARK COUNTY, NEVADA RECORDER'S OFFICE, IN FILE 88 OF SURVEYS, AT PAGE 53.

**BENCHMARK**

BENCHMARK # 23  
RIVET AND SQUARE ALUMINUM PLATE IN CONCRETE MONUMENT, 50 FT. SOUTH AND 40 FT. WEST OF CENTENNIAL PKWY. AND EL CAPITAN WAY

**CAUTION:**

EXISTING UTILITIES ARE LOCATED ON THE PLANS FROM A SEARCH OF AVAILABLE RECORDS. CONTRACTOR TO VERIFY LOCATIONS AND DEPTHS PRIOR TO CONSTRUCTION.



- KEY NOTES**
- CONSTRUCTION ITEMS:**
- 1 REMOVE EXISTING AC PAVEMENT
  - 2 EXISTING CURB, GUTTER AND SIDEWALK TO BE REMOVED.
  - 3 EXISTING STREETLIGHT TO BE REMOVED AND SALVAGED. CONTRACTOR TO RETURN STREETLIGHT AND POLE TO CLV MAINTENANCE YARD.
  - 4 CONTRACTOR TO JACKHAMMER STREETLIGHT POLE TO A DEPTH OF 18" MINIMUM BELOW FINISH SURFACE.
  - 5 EXISTING CMU WALL TO REMAIN PROTECT IN PLACE. DAMAGE TO WALL SHALL BE REPAIRED AND/OR REPAIRED TO THE OWNER'S SATISFACTION AT THE CONTRACTOR'S EXPENSE.
  - 6 EXISTING SANITARY SEWER MANHOLES TO REMAIN PROTECT IN PLACE. SEWER MANHOLES TO BE ADJUSTED TO THE NEW FINISH GRADE OF GRAND MONTECITO PARKWAY IMPROVEMENTS. REFER TO SHEETS SS1 THROUGH SS3 FOR ADDITIONAL INFORMATION.
  - 7 EXISTING ELECTRICAL MANHOLE TO BE RELOCATED OUTSIDE OF THE NEW GRAND MONTECITO PARKWAY IMPROVEMENTS CURB AND GUTTER PER NEVADA POWER.
  - 8 EXISTING CURB TO REMAIN. CONTRACTOR TO PROTECT IN PLACE FOR CONTINUATION WITH THE NEW GRAND MONTECITO PARKWAY IMPROVEMENTS. REFER TO SHEETS C1 THROUGH C10 FOR ADDITIONAL INFORMATION.
  - 9 EXISTING STREETLIGHT TO REMAIN. CONTRACTOR SHALL DUE TO CONSTRUCTION OF SANITARY SEWER LINE REMOVE AND PROTECT FROM DAMAGE EXISTING STREETLIGHT. UPON COMPLETION OF UNDERGROUND IMPROVEMENTS CONTRACTOR SHALL RE-INSTALL STREETLIGHT, WIRING AND PULLBOXES PER STREETLIGHT AND SIGNAL NOTES ON SHEET T1.
  - 10 CONTRACTOR SHALL REMOVE AND REPLACE MEDIAN ISLAND TYPE 'A' CURB AS NECESSARY TO CONSTRUCT UNDERGROUND SANITARY SEWER. REPLACE CURB PER CCAUSD STD DWG #219.
  - 11 REMOVE AND REPLACE EXISTING AC PAVEMENT WITH LIKE SECTION

**REVISIONS**

NO.	DATE	DESCRIPTION	APPROVED

**Department of Public Works**

**ORIGINAL DURANGO DRIVE ALIGNMENT DEMOLITION PLAN**

**CITY OF LAS VEGAS**

NEVADA

**DRAWING No. 5**

D1

PLAN#107V3701

59

**Call before you Dig.**

1-800-227-2600

**Call before you OVERHEAD**

1-702-227-2929

1821-005-d1.dwg JMG 03/19/04 07:46:59

67045