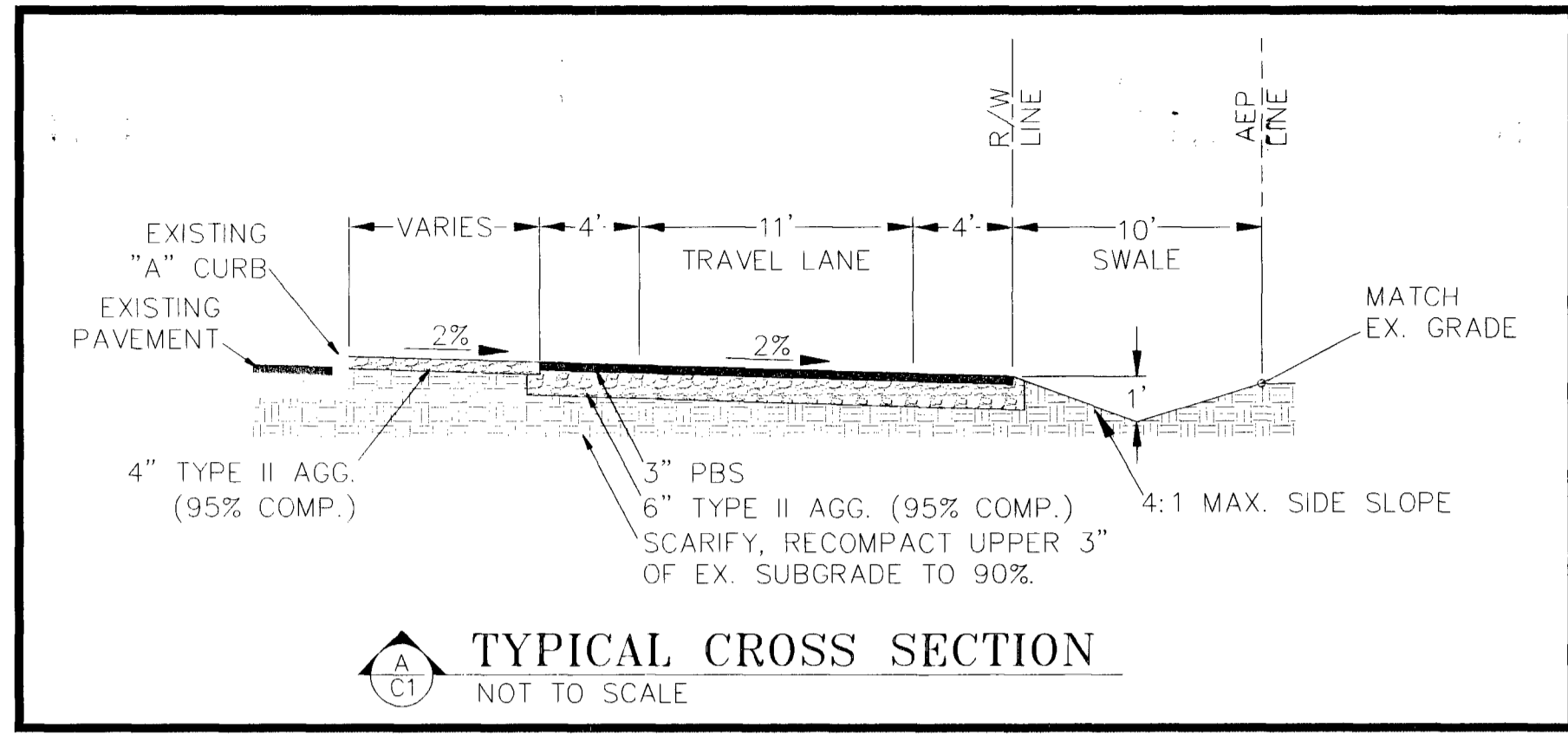


APN 125-29-510-009
TRIMMER FAMILY LLC
and HOG CREEK INC



APN 125-29-510-007
MCDONALD'S CORPORATION

APN 125-28-101-008
BARTSAS MARY 20 LLC

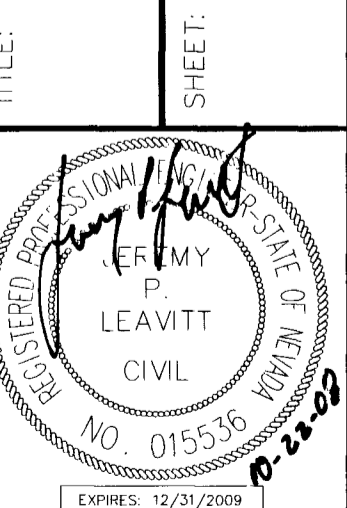
APN 125-20-803-010
COUNTY OF CLARK
(PUBLIC WORKS)

DEPARTMENT OF PUBLIC WORKS
ENGINEERING DESIGN SECTION

CITY ENGINEER: JORGE CERVANTES, P.E.
PROGRAM MANAGER: JEREMY P. LEAVITT, P.E.
DESIGNED BY: BJP
DRAWN BY: BJP
CHECKED BY: JPL
DATE: JANUARY 2008

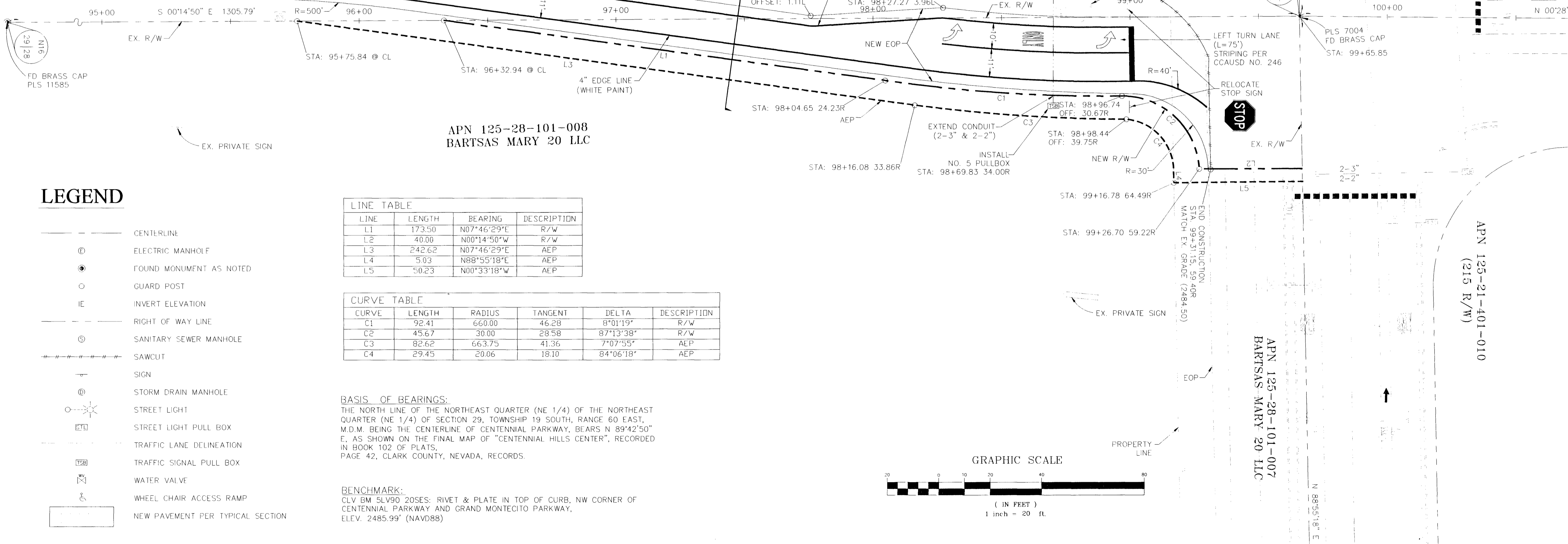
GRAND MONTECITO PARKWAY
ROADWAY RE-ALIGNMENT

DESIGN



Sheet
1 of 1
DRAWING NO.
107v3701-ra

F:\DEPOT\CITY\ENGINEER\ENG_DESIGN\DESIGN\DESIGN\GRAND MONTECITO-CENTENNIAL.DWG\GRAND MONTECITO-DESIGN.DWG



LEGEND

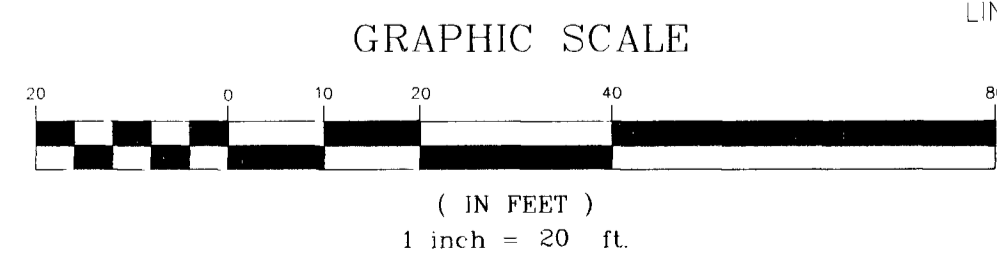
- CENTERLINE
- ⊙ ELECTRIC MANHOLE
- ⊙ FOUND MONUMENT AS NOTED
- GUARD POST
- IE INVERT ELEVATION
- RIGHT OF WAY LINE
- ⊙ SANITARY SEWER MANHOLE
- SAWCUT
- ↑ SIGN
- ⊙ STORM DRAIN MANHOLE
- ⊙ STREET LIGHT
- ⊙ STREET LIGHT PULL BOX
- ⊙ TRAFFIC LANE DELINEATION
- ⊙ TRAFFIC SIGNAL PULL BOX
- ⊙ WATER VALVE
- ⊙ WHEEL CHAIR ACCESS RAMP
- NEW PAVEMENT PER TYPICAL SECTION

LINE	LENGTH	BEARING	DESCRIPTION
L1	173.50	N07°46'29"E	R/W
L2	40.00	N00°14'50"W	R/W
L3	242.62	N07°46'29"E	AEP
L4	5.03	N88°55'18"E	AEP
L5	50.23	N00°33'18"W	AEP

CURVE	LENGTH	RADIUS	TANGENT	DELTA	DESCRIPTION
C1	92.41	660.00	46.28	8°01'19"	R/W
C2	45.67	30.00	28.58	87°13'38"	R/W
C3	82.62	663.75	41.36	7°07'55"	AEP
C4	29.45	20.06	18.10	84°06'18"	AEP

BASIS OF BEARINGS:
THE NORTH LINE OF THE NORTHEAST QUARTER (NE 1/4) OF THE NORTHEAST QUARTER (NE 1/4) OF SECTION 29, TOWNSHIP 19 SOUTH, RANGE 60 EAST, M.D.M. BEING THE CENTERLINE OF CENTENNIAL PARKWAY, BEARS N 89°42'50" E, AS SHOWN ON THE FINAL MAP OF "CENTENNIAL HILLS CENTER", RECORDED IN BOOK 102 OF PLATS, PAGE 42, CLARK COUNTY, NEVADA, RECORDS.

BENCHMARK:
CLV BM 5LV90 20SES: RIVET & PLATE IN TOP OF CURB, NW CORNER OF CENTENNIAL PARKWAY AND GRAND MONTECITO PARKWAY, ELEV. 2485.99' (NAVD88)



NO.	DATE	DESCRIPTION	APP'D