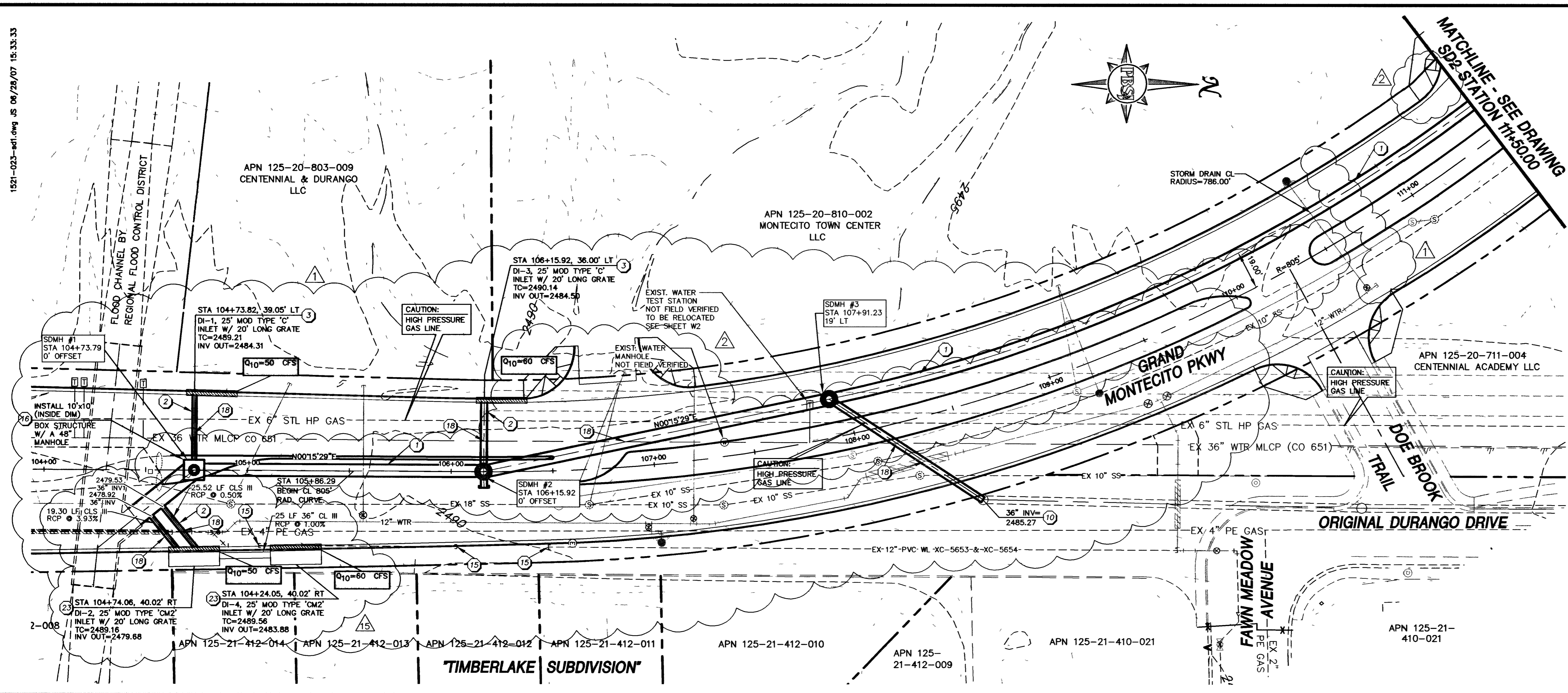


1521-03-eat.dwg JS 08/29/07 15:33:33



GRAND MONTECITO PARKWAY SHEET INDEX

GRAPHIC SCALE

(IN FEET)

HORIZ 1 inch = 30 ft.
VERTICAL 1 inch = 3 ft.

BASIS OF BEARING

THE BASIS OF BEARINGS FOR THIS PROJECT IS GRID NORTH AS DEFINED BY THE NEVADA COORDINATE SYSTEM OF 1983 (NCS83), EAST ZONE, (2701), DETERMINED BY GIS CONTROL POINTS, 804 AND 808, AS SHOWN ON A RECORD OF SURVEY ON FILE IN THE CLARK COUNTY, NEVADA RECORDER'S OFFICE, IN FILE 88 OF SURVEYS, AT PAGE 53.

BENCHMARK

BENCHMARK # 23
RIVET AND SQUARE ALUMINUM PLATE IN CONCRETE MONUMENT, 50 FT. SOUTH AND 40 FT. WEST OF CENTENNIAL PKWY. AND EL CAPITAN WAY

CAUTION:
EXISTING UTILITIES ARE LOCATED ON THE PLANS FROM A SEARCH OF AVAILABLE RECORDS. CONTRACTOR TO VERIFY LOCATIONS AND DEPTHS PRIOR TO CONSTRUCTION

- KEY NOTES**
- INSTALL RCP STORM DRAIN PER DETAIL A, DWG. SD11
 - INSTALL RCP STORM DRAIN LATERAL PER DETAIL A, DWG. SD11 REFER TO SHEETS SD9 AND SD10 FOR LATERAL PROFILES
 - REFER TO DETAIL C, DWG. SD11 FOR MODIFIED TYPE 'C' DROP INLET. SEE DETAIL B, FOR DROP INLET GRATE INFORMATION
 - REFER TO DETAIL E, DWG. SD12 FOR TYPE 'E' DROP INLET. SEE DETAIL B, FOR DROP INLET GRATE INFORMATION
 - INSTALL 60" TYPE II MANHOLE PER USD #406. SEE DETAIL D, DWG. SD11 FOR ADDITIONAL INFORMATION.
 - INSTALL RCB CULVERT TYPE I HEADWALL PER NDOT DRAWINGS B-20.1.1 AND B-20.1.5
 - CONTRACTOR GRADE ON OUTLET AREA 15' WIDE TO ELEVATION 2540.0 OF NATURAL GROUND W/ 2:1 MAX GRADED SIDE SLOPE AREAS TYING OFF AT THE NATURAL GROUND ELEVATION.
 - CONTRACTOR TO VERIFY/CONFIRM EXISTING INVERT OF 36" STORM DRAIN PRIOR TO INSTALLATION OF STORM DRAIN.
 - CONTRACTOR TO VERIFY/CONFIRM EXISTING INVERT OF 48" STORM DRAIN PRIOR TO INSTALLATION OF STORM DRAIN
 - INSTALL 36" STORM DRAIN LATERAL PER PROFILE ON SHEET SD9 FOR FUTURE DRAINAGE CONNECTION TO ORIGINAL DURANGO DRIVE ALIGNMENT.
 - ENCASE STORM DRAIN PER UDACS 2.19. REFER TO SHEETS SD9 AND SD10 FOR ADDITIONAL INFORMATION.
 - INSTALL STEEL PIPE CASING ON WATERLINE 10' EITHER SIDE OF STORM DRAIN PER UDACS PLATE 16.
 - REFER TO DETAIL F, DWG. SD12 FOR TYPE 'E' DROP INLET. SEE DETAIL B, FOR DROP INLET GRATE INFORMATION
 - CONTRACTOR TO INSTALL LOCKING STORM DRAIN MANHOLE LID
 - EXISTING 12" WATERLINE TO BE REMOVED AND/OR CUT & CAP TO ABANDON IN PLACE. REFER TO SHEET W1 FOR LOCATIONS AND ADDITIONAL INFORMATION.
 - PRIOR TO CONSTRUCTION ACTIVITIES, CONTRACTOR TO PROVIDE STRUCTURAL OR PRECAST SHOP DRAWINGS, SEALED BY A NEVADA REGISTERED ENGINEER FOR REVIEW AND APPROVAL.
 - CAUTION GAS: CONTRACTOR TO VERIFY EXACT LOCATION OF EXISTING 2" GAS LINE STUDIES PRIOR TO CONSTRUCTION ACTIVITIES
 - INSTALL SIKAFLEX-1A ONE PART POLYURETHANE-BASED, NON-SLAG ELASTOMERIC SEALANT AS MANUFACTURED BY SIKA CORP. APPLY IN ACCORDANCE WITH MANUFACTURER'S WRITTEN SPECIFICATIONS USING AN APPROVED BACKER ROD AND JOINT DEPTH OF 1/4" TO 1/2". REFER TO SHTS SD9 & SD10 FOR ADDITIONAL INFORMATION.
 - INSTALL 48" TYPE II MANHOLE PER USD #405 SEE DETAIL D, DWG. SD11 FOR ADDITIONAL INFORMATION
 - INSTALL 60" TYPE II MANHOLE PER USD #403 SEE DETAIL D, DWG. SD11 FOR ADDITIONAL INFORMATION.
 - CONTRACTOR TO INSTALL 36" RCP STORM DRAIN PLUG.
 - CONTRACTOR TO INSTALL 18" PIPE PLUG AT THE OUTLET OF THE MANHOLE FOR PHASE II CONSTRUCTION PHASE II CONSTRUCTION SHALL INCLUDE THE REMOVAL OF THE PLUG WHEN THE STORM DRAIN SYSTEM IS COMPLETED INTO THE RCB.
 - REFER TO DWG. SD13 FOR MODIFIED TYPE "CM2" DROP INLET DETAIL.

REVISIONS

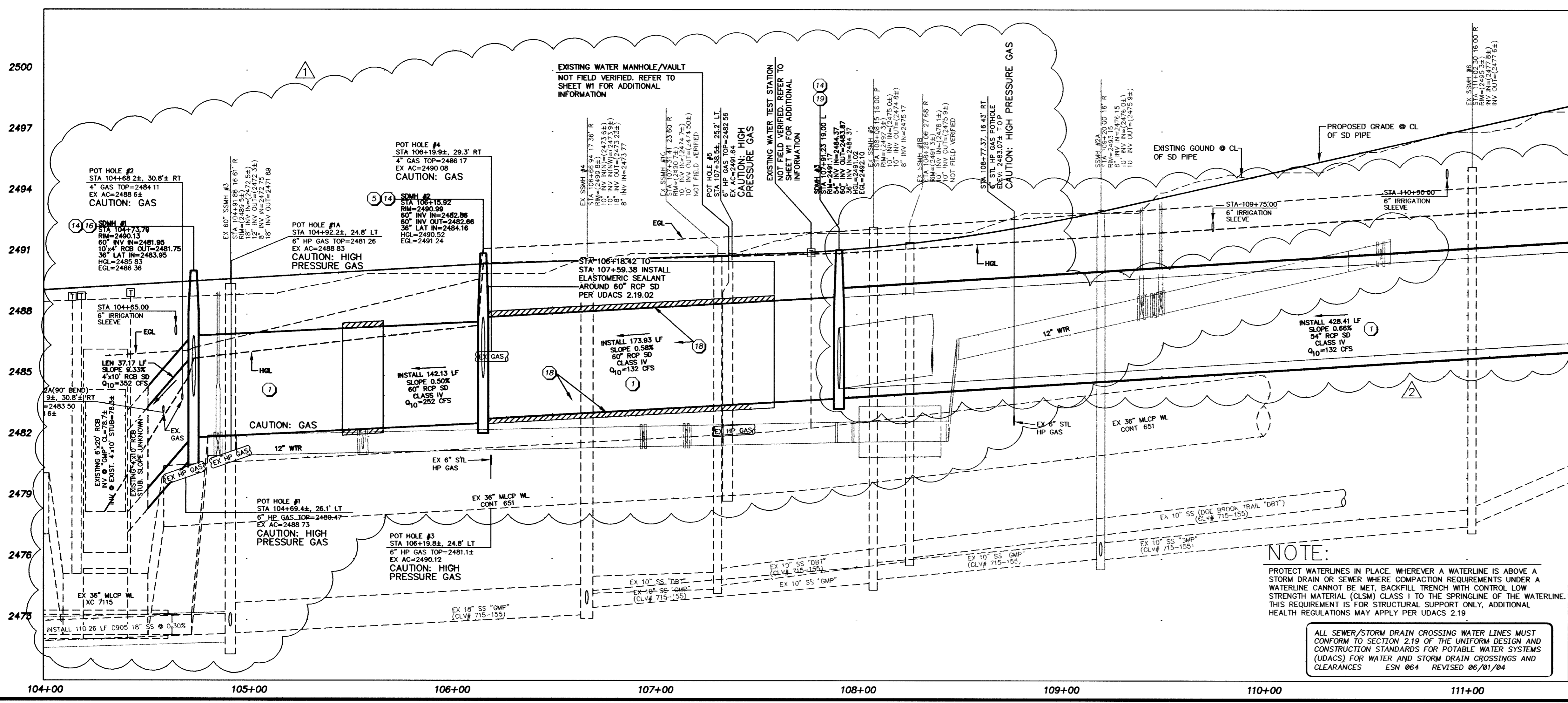
NO.	DATE	DESCRIPTION
1	7/9/07	REVISE D LOCATIONS
2	9/28/05	ADD DRIVEWAY & REVISE MEDIAN, REVISE SD PROFILE
3	12/15/05	REVISE STORM DRAIN, SANITARY SEWER, 12" PVC WL
		NO. DATE DESCRIPTION

ENGINEERING DESIGN SECTION

DESIGNED BY: J. GREGORY
CHECKED BY: V. HARRIS
DATE: 02-27-04

PROFESSIONAL ENGINEER - STATE OF NEVADA
KEVIN M. O'DONNELL
No. 10974
Civil
7-10-07

CONSTRUCTION SERVICES
PLANNING, SURVEYING, ENGINEERING



STORM DRAIN CONSTRUCTION NOTE

- SEE SHEET SD12 FOR NORTHING & EASTING LOCATIONS OF MANHOLES.
- REFER TO SHEETS H1 THROUGH H4 FOR CL DIMENSION INFORMATION.
- DROP INLET STATION LOCATIONS ARE TO CL OF LATERAL PIPE, OFFSET IS TO BACK OF CURB.

NOTE:
PROTECT WATERLINES IN PLACE. WHEREVER A WATERLINE IS ABOVE A STORM DRAIN OR SEWER WHERE COMPACTION REQUIREMENTS UNDER A WATERLINE CANNOT BE MET, BACKFILL TRENCH WITH CONTROL LOW STRENGTH MATERIAL (CLSM) CLASS 1 TO THE SPRINGLINE OF THE WATERLINE. THIS REQUIREMENT IS FOR STRUCTURAL SUPPORT ONLY. ADDITIONAL HEALTH REGULATIONS MAY APPLY PER UDACS 2.19.

ALL SEWER/STORM DRAIN CROSSING WATER LINES MUST CONFORM TO SECTION 2.19 OF THE UNIFORM DESIGN AND CONSTRUCTION STANDARDS FOR POTABLE WATER SYSTEMS (UDACS) FOR WATER AND STORM DRAIN CROSSINGS AND CLEARANCES ESN 064 REVISED 06/01/04

Call before you Dig.
1-702-455-7511
1-702-229-6611

Call before you OVERHEAD.
1-800-227-2600
1-702-227-2929

Department of Public Works

GRAND MONTECITO PARKWAY IMPROVEMENTS
STORM DRAIN PLAN AND PROFILES
STA 103+50.00 TO STA 111+50.00

CITY OF LAS VEGAS NEVADA

DRAWING No. 23
SD1
PLAN# 107V3701