

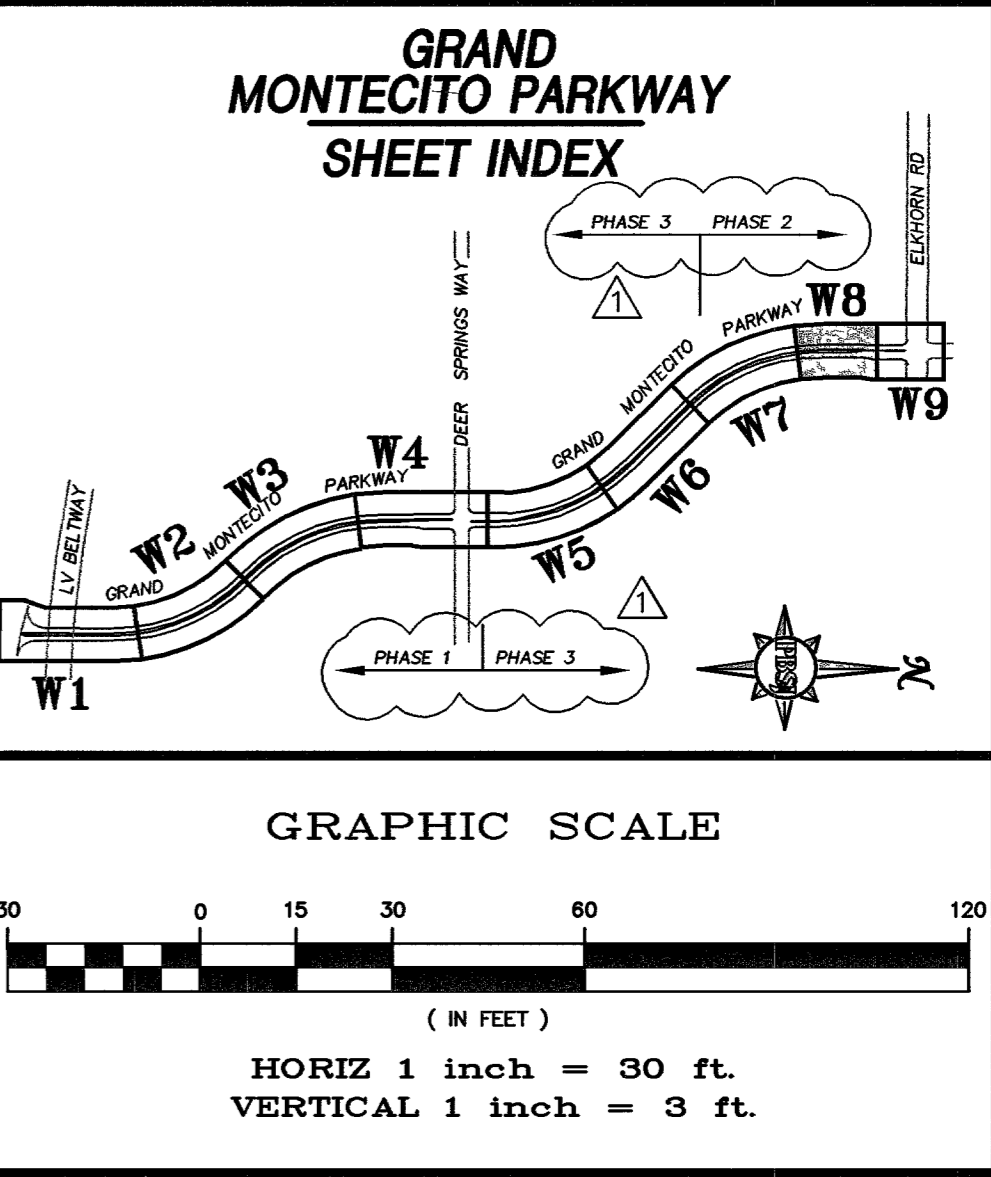
ADJUST WATER VALVE BOXES TO FINISHED GRADE PER UDACS PLATE NO. 8. VALVE SHALL BE ACCESSIBLE AT ALL TIMES.

THE DISTRICT CAN NOT GUARANTEE A WATER TIGHT SHUTDOWN WHERE CONNECTIONS OR REPAIRS TO EXISTING FACILITIES ARE REQUIRED. THE CONTRACTOR SHALL ENSURE ALL LABOR AND EQUIPMENT IS AVAILABLE TO REMOVE FUGITIVE WATER WHICH MAY IMPEDE CONSTRUCTION AT ALL TIMES. COORDINATION WITH INSPECTION DIVISION MUST TAKE PLACE PRIOR TO ANY TRIAL SHUTDOWN. CONTRACTOR SHALL INSTALL TEMPORARY SERVICE TO ENSURE PROPER SHUTDOWN IN THE EVENT NO OTHER APPURTENANCES ARE AVAILABLE.

27] CONSTRUCT 1" WATER METER PER UDACS PLATE NO. 10 (PUBLIC)

30] CONSTRUCT 1" RPA PER UDACS PLATE NO. 1A (PUBLIC)

31] ALL BRASS FITTINGS REQUIRED



**BASIS OF BEARING**

THE BASIS OF BEARINGS FOR THIS PROJECT IS GRID NORTH AS DEFINED BY THE NEVADA COORDINATE SYSTEM OF 1983 (NCS83), EAST ZONE, (2701), DETERMINED BY GIS CONTROL POINTS, 804 AND 808, AS SHOWN ON A RECORD OF SURVEY ON FILE IN THE CLARK COUNTY, NEVADA RECORDER'S OFFICE, IN FILE 88 OF SURVEYS, AT PAGE 53.

**BENCHMARK**

BENCHMARK # 23  
RIVET AND SQUARE ALUMINUM PLATE IN CONCRETE MONUMENT, 50 FT. SOUTH AND 40 FT. WEST OF CENTENNIAL PKWY. AND EL CAPITAN WAY

**CAUTION:**

EXISTING UTILITIES ARE LOCATED ON THE PLANS FROM A SEARCH OF AVAILABLE RECORDS. CONTRACTOR TO VERIFY LOCATIONS AND DEPTHS PRIOR TO CONSTRUCTION.

- KEY NOTES**
- INSTALL A 12" M.J. TAPPING SLEEVE WITH A 12" TAPPING VALVE. INSTALLATION OF THE METAL TAP ASSEMBLY SHALL BE PER UDACS SPECIFICATION 2.21 AND STD. PLATE No. 22.
  - NOT USED
  - NOT USED
  - INSTALL 45° BEND STRUCTURE WITH THRUST/ANCHOR BLOCKS PER UDACS SECTION 2.11. REFER TO UDACS PLT. #3 AND 5.
  - INSTALL A 12" 90° BEND PER UDACS STD. PLATE No. 5.
  - INSTALL A 6" FIRE HYDRANT ASSEMBLY PER UDACS SPECIFICATIONS 2.18 AND STD. PLATE No. 7. FIRE DEPARTMENT APPROVAL REQUIRED.
  - INSTALL A 12" GATE VALVE PER UDACS STD. SPECIFICATIONS 3.24.01 AND 2.09
  - INSTALL A 16"x8" TEE PER UDACS STD. PLATE No. 5.
  - REMOVE EXISTING CAP AND EXTEND THE EXISTING WATERMAIN. EXISTING 12" G.V. TO REMAIN IN CLOSED POSITION DURING THE PIPE INSTALLATION.
  - INSTALL A 12"x8" REDUCER PER UDACS STD. PLATE No. 3.
  - INSTALL A 12" 11-1/4" BEND PER UDACS STD. PLATE No. 5.
  - INSTALL A 12"x12" CROSS PER UDACS STD. PLATE No. 5.
  - INSTALL A 12" 22-1/2" BEND PER UDACS STD. PLATE No. 5.
  - INSTALL OFFSET/DEEP BURY FIRE HYDRANT PER DETAIL 'E' ON SHEET W10. REFER TO KEYNOTE #6 FOR ADDITIONAL INFORMATION.
  - INSTALL 8" WATER LATERAL SUBJ. CAP AND B.O. PER UDACS PLT #4 WITH 8" GATE VALVE. GATE VALVE TO BE INSTALLED PER UDACS STD. PLATE No. 3, 5 & 8. GATE VALVE TO BE INSTALLED AND REMAIN IN THE CLOSED POSITION UNTIL FUTURE WATER LATERAL EXTENSION.
  - CONTRACTOR TO REMOVE EXISTING CAP & BLOW OFF ASSEMBLY PER UDACS PLATE No. 4A
  - INSTALL, CAP AND MARK LOCATION OF 6" IRRIGATION SLEEVE PER DETAIL 'D' SHEET W10.
  - INSTALL 12" PVC (C900) WATERMAIN PER UDACS STD SPECIFICATIONS 3.11.01 AND PLATE No. 6C.
  - INSTALL A 12"x6" TEE PER UDACS STD. PLATE No. 5.
  - INSTALL A 12" CAP WITH 2" MANUAL BLOW-OFF ASSEMBLY PER UDACS STD PLATE No. 4A.
  - INSTALL A 12"x8" TEE PER UDACS STD. PLATE No. 5.
  - INSTALL A 12" TEE PER UDACS STD. PLATE No. 5.
  - CONTRACTOR SHALL INSTALL STEEL CASING ASSEMBLY PER UDACS STD. SPECIFICATIONS 2.08 & STD. PLATE No. 16. REFER TO DETAIL 'B' SHEET W10 FOR ADDITIONAL INFORMATION. CONTRACTOR SHALL DOCUMENT ALL CASING ASSEMBLY INSTALLED WITH VERTICAL AND HORIZONTAL LOCATIONS AND PROVIDE INFORMATION TO THE CIVIL ENGINEER. REFER TO SHEET W9 FOR ADDITIONAL PROFILE INFORMATION.
  - CONTRACTOR SHALL DIP WATERLINE UNDER STORM DRAIN AND/OR SANITARY SEWER LINES AS NECESSARY WHEN MINIMUM 4.0' OF COVER OVER WATERLINE TO FINISH SURFACE/GRADE AND 18" MINIMUM CLEARANCE ABOVE STORM DRAIN AND/OR SANITARY SEWER LINES CANNOT BE MAINTAINED. DIP WATERLINE PER UDACS STD. PLATE No. 15. REFER TO DETAIL 'C' SHEET W10 FOR ADDITIONAL INFORMATION. CONTRACTOR SHALL DOCUMENT ALL WATERLINE DIPS INSTALLED WITH VERTICAL AND HORIZONTAL LOCATIONS, TYPE, SIZE AND ANGLE OF BENDS USED AND PROVIDE INFORMATION TO THE CIVIL ENGINEER. REFER TO SHEET W10 FOR ADDITIONAL PROFILE INFORMATION.
  - INSTALL STORM DRAIN WITH ELASTOMERIC JOINT SEALANT PER UDACS SECTION 2.19. REFER TO SHEETS S09 AND S010 FOR ADDITIONAL INFO.
  - INSTALL STEEL PIPE CASING ON EXISTING WATERLINE PER UDACS PLATE No. 16.
  - INSTALL A 12"x12"x12" TEE.
  - REMOVE EXISTING BLOW-OFF ASSEMBLY AND CONNECT. CUT EX. 12" LINE AS NEEDED TO CONNECT PER UDACS PLATE 4A.

NO.	DATE	DESCRIPTION
1	12/14/05	INSTALL 1" WATER METER PER UDACS PLATE NO. 10 (PUBLIC)
2	11/07/06	REVISE W. PROFILE
3	12/05/06	12" WL. S.S. NOTES, PHASE LINE
4	12/14/07	REVISE W. PROFILE
5	12/14/07	REVISE W. PROFILE

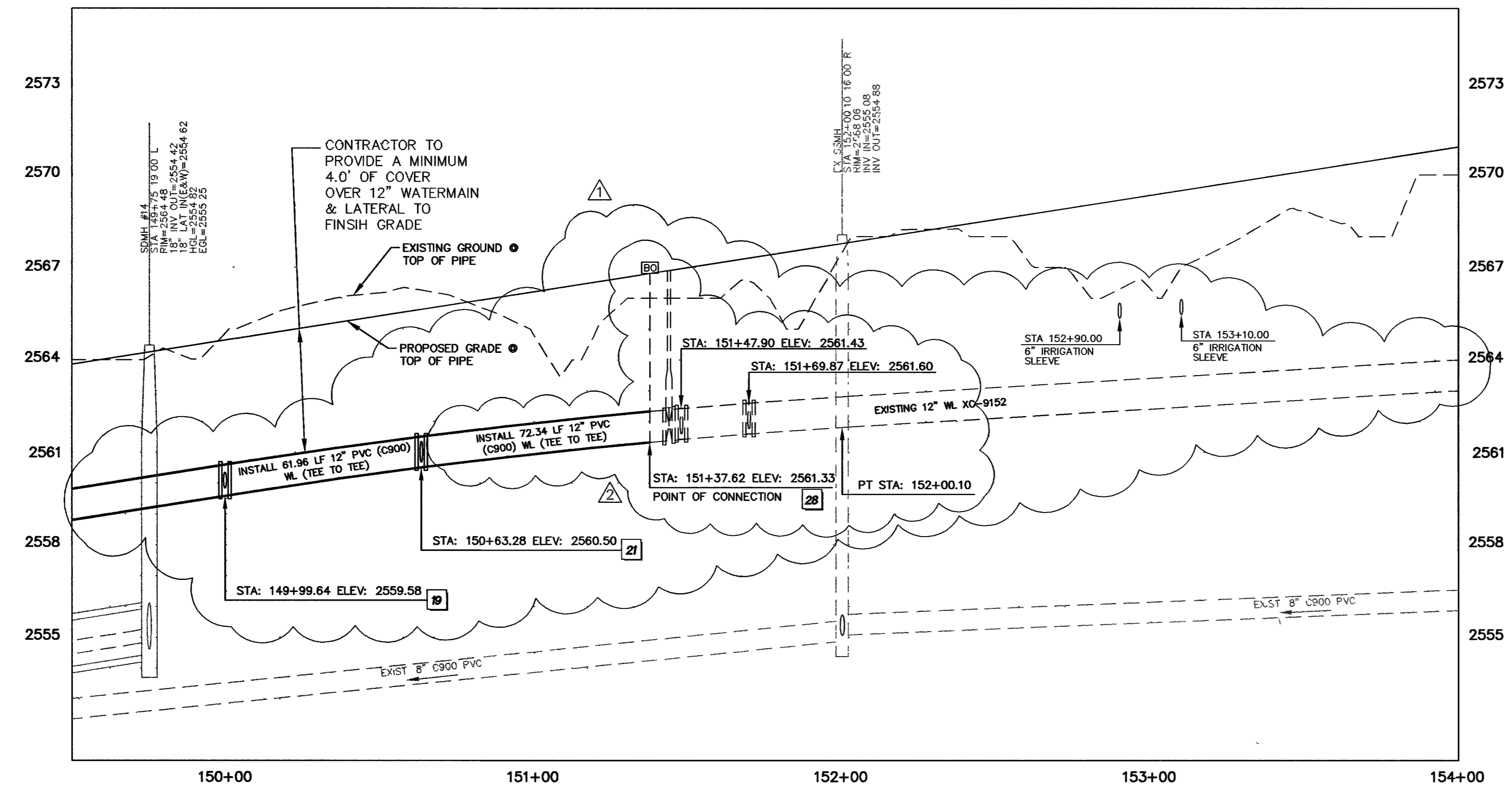
1521-054-v8.dwg, JWG 09/15/05 11:20:44

**REDUCED PRESSURE PRINCIPLE ASSEMBLY - (1) 1"**

APPROVED REDUCED PRESSURE PRINCIPLE ASSEMBLY(S) SHALL BE INSTALLED PER THE U.D.A.C.'S PLATE NO. 11A. NO WATER SHALL BE TAKEN FROM A SERVICE REQUIRING BACKFLOW PREVENTION UNTIL THE REDUCED PRESSURE PRINCIPLE ASSEMBLY HAS BEEN SUCCESSFULLY TESTED BY THE LVWD. ANY BLOCK WALL OR FENCE MATERIAL SHALL BE DESIGNED AND CONSTRUCTED AROUND THE OUTSIDE OF THE CASING(S) TO ALLOW THE DISTRICT DIRECT ACCESS FROM THE ADJACENT RIGHT-OF-WAY CASING(S) SHALL BE CLEARLY MARKED OR STAKED PRIOR TO THE START OF CONSTRUCTION.

**Call before you Dig.**  
1-702-455-7511  
1-702-229-6611

**Call before you OVERHEAD.**  
1-800-227-2600  
1-702-227-2929



1st APP 12/14/05  
LVWD PROJ #0808 DATE 1/15/17

- WATERLINE CONSTRUCTION NOTES:**
- SEE SHEET W10 FOR FIRE HYDRANT NORTHING AND EASTING TABLE
  - REFER TO SHEETS H1 THROUGH H4 FOR CL DIMENSION INFORMATION.
  - REFER TO SHEET W10 FOR UTILITY DETAILS, CROSSINGS & ADDITIONAL INFORMATION.
  - REFER TO SHEET W1 FOR LVWD WATERLINE INSTALLATION AND PROCEDURES TO RELOCATE A CORROSION TEST STATION.

Department of Public Works

GRAND MONTECITO PARKWAY IMPROVEMENTS  
12" PVC (C900) WL PLAN AND PROFILES  
STA 149+50.00 TO STA 154+00.00

CITY OF LAS VEGAS  
NEVADA

DRAWING No. 54  
PLAN# 107V3701

Replot