

### GRAND MONTECITO PARKWAY SHEET INDEX

PHASE 1 PHASE 2 PHASE 3

### GRAPHIC SCALE

(IN FEET)

HORIZ 1 inch = 30 ft.  
VERTICAL 1 inch = 3 ft.

### BASIS OF BEARING

THE BASIS OF BEARINGS FOR THIS PROJECT IS GRID NORTH AS DEFINED BY THE NEVADA COORDINATE SYSTEM OF 1983 (NCS83), EAST ZONE, (2701), DETERMINED BY GIS CONTROL POINTS, 804 AND 808, AS SHOWN ON A RECORD OF SURVEY ON FILE IN THE CLARK COUNTY, NEVADA RECORDER'S OFFICE, IN FILE 69 OF SURVEYS, AT PAGE 53.

### BENCHMARK

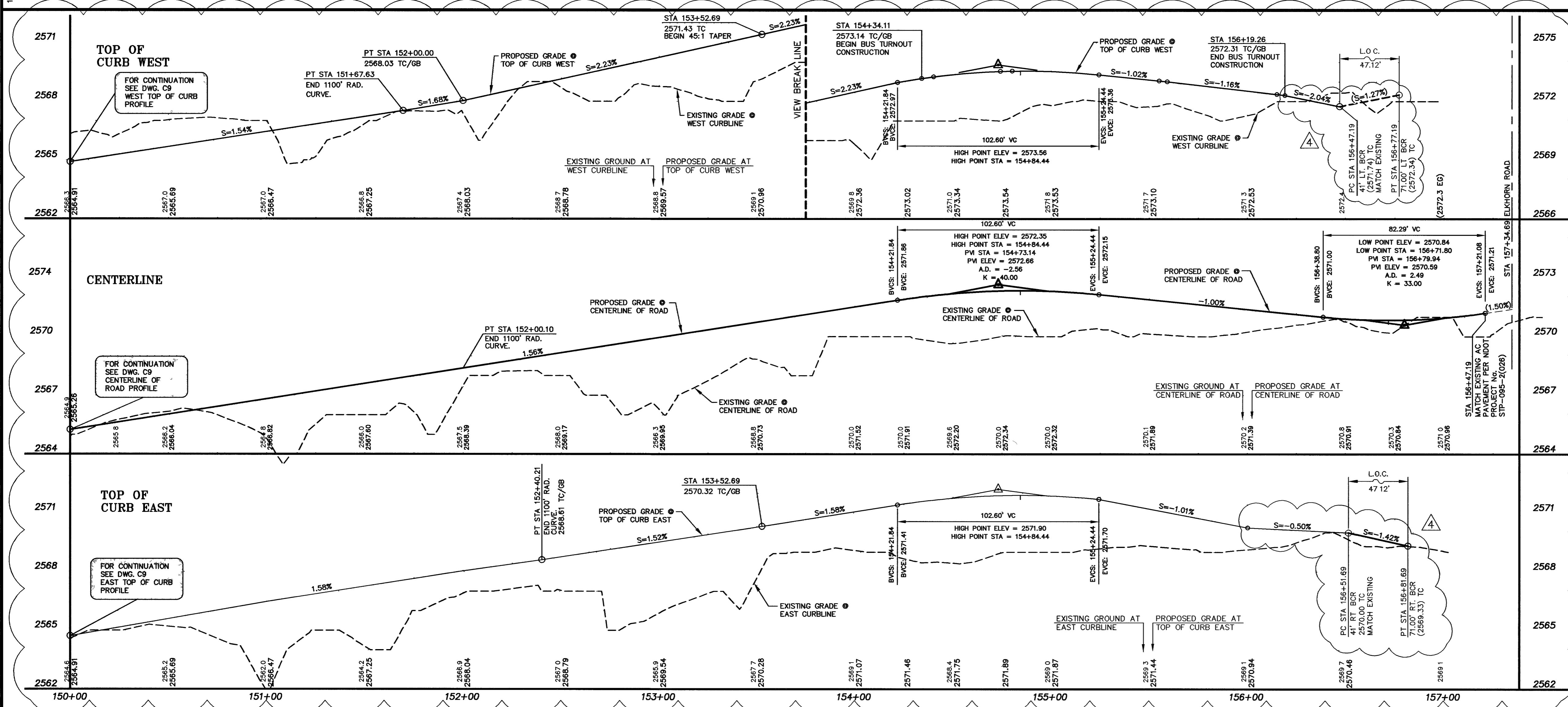
BENCHMARK # 23  
RIVET AND SQUARE ALUMINUM PLATE IN CONCRETE MONUMENT, 50 FT. SOUTH AND 40 FT. WEST OF CENTENNIAL PKWY. AND EL CAPITAN WAY

**CAUTION:**  
EXISTING UTILITIES ARE LOCATED ON THE PLANS FROM A SEARCH OF AVAILABLE RECORDS. CONTRACTOR TO VERIFY LOCATIONS AND DEPTHS PRIOR TO CONSTRUCTION.

### KEY NOTES

#### CONSTRUCTION ITEMS:

- CONSTRUCT STRUCTURAL SECTION PER TYPICAL SECTIONS ON SHEET C04 SEE CONSTRUCTION & SURVEY NOTE #4 THIS SHEET FOR ADDITIONAL INFORMATION.
- CONSTRUCT 'L' TYPE CURB & GUTTER PER STD DWG #216.
- CONCRETE MEDIAN ISLAND CAP PER DETAIL A ON SHEET C9
- SAW CUT & MATCH EXISTING.
- CONSTRUCT SIDEWALK RAMP PER STD DWG #235 CASE 1 (A=B, B=B UNLESS OTHERWISE NOTED) PER DETAIL 'B' ON SHEET C9
- ADJUST EXISTING VALVE BOX TO FG PER UDACS PLATE #8.
- MEDIAN ISLAND FUTURE LANDSCAPE AREA PER TYPICAL SECTION ON SHEET C04 REFER TO SHEETS W1 THROUGH W10 FOR IRRIGATION SLEEVE PLACEMENT.
- 3:1 SLOPE TO EXISTING GROUND
- 15' WIDE TEMPORARY CONSTRUCTION AND SLOPE EASEMENT.
- GRADED DRAINAGE SWALE. SEE DETAIL D ON SHEET C9.
- APPROXIMATE GRADING LIMITS
- 2" TEMPORARY AC PAVEMENT. REFER TO SHEET C9 DETAIL C FOR TEMPORARY PAVEMENT SECTION.
- CONSTRUCT BUS TURNOUT PER STD DWG #s 234.1 AND 234.2
- CONSTRUCT 'A' TYPE CURB PER CCAUSD STD. DWG #219.
- REFER TO SHEETS S07 AND S08 FOR PLAN AND PROFILE OF GRADED V-DITCH CHANNEL AND ADDITIONAL RCB INFORMATION.
- CONSTRUCT REINFORCED CONCRETE CROSS GUTTER PER CCAUSD No. 228
- INSTALL ENCASING IN A MINIMUM OF FOUR (4) INCHES OF CEMENT SLURRY FOR A DISTANCE OF TEN (10) FEET ON EACH SIDE OF CROSSING PER UDACS 2-19 02 B.3.b



### CONSTRUCTION & SURVEY NOTE:

- STATION AND OFFSETS ARE TO BACK OF CURB UNLESS OTHERWISE NOTED ON PLAN SET.
- REFER TO SURVEY CONTROL SHEETS SV1 THROUGH SV4 FOR RIGHT-OF-WAY DIMENSIONS AND ADDITIONAL INFORMATION
- REFER TO SHEETS H1 THROUGH H4 FOR MEDIAN ISLAND AND CURB DIMENSIONS
- EX. SSMH TO BE ADJUSTED TO GRADE. REFER TO SHEETS S51 THRU S53 FOR ADDITIONAL INFORMATION WHERE OCCURS

1-702-455-7511  
1-702-229-6611

**Call before you Dig.**

1-800-227-2600

**Call before you OVERHEAD**

1-702-227-2929

### REVISIONS

NO.	DATE	DESCRIPTION
1	1/29/17	REVISE TYPE OF PIPE INTERSECTIONS
2	1/29/17	REVISE TYPE OF PIPE INTERSECTIONS
3	1/29/17	REVISE TYPE OF PIPE INTERSECTIONS
4	1/29/17	REVISE TYPE OF PIPE INTERSECTIONS
5	1/29/17	REVISE TYPE OF PIPE INTERSECTIONS
6	1/29/17	REVISE TYPE OF PIPE INTERSECTIONS
7	1/29/17	REVISE TYPE OF PIPE INTERSECTIONS
8	1/29/17	REVISE TYPE OF PIPE INTERSECTIONS
9	1/29/17	REVISE TYPE OF PIPE INTERSECTIONS
10	1/29/17	REVISE TYPE OF PIPE INTERSECTIONS
11	1/29/17	REVISE TYPE OF PIPE INTERSECTIONS
12	1/29/17	REVISE TYPE OF PIPE INTERSECTIONS
13	1/29/17	REVISE TYPE OF PIPE INTERSECTIONS
14	1/29/17	REVISE TYPE OF PIPE INTERSECTIONS
15	1/29/17	REVISE TYPE OF PIPE INTERSECTIONS
16	1/29/17	REVISE TYPE OF PIPE INTERSECTIONS
17	1/29/17	REVISE TYPE OF PIPE INTERSECTIONS
18	1/29/17	REVISE TYPE OF PIPE INTERSECTIONS
19	1/29/17	REVISE TYPE OF PIPE INTERSECTIONS
20	1/29/17	REVISE TYPE OF PIPE INTERSECTIONS
21	1/29/17	REVISE TYPE OF PIPE INTERSECTIONS
22	1/29/17	REVISE TYPE OF PIPE INTERSECTIONS
23	1/29/17	REVISE TYPE OF PIPE INTERSECTIONS
24	1/29/17	REVISE TYPE OF PIPE INTERSECTIONS
25	1/29/17	REVISE TYPE OF PIPE INTERSECTIONS
26	1/29/17	REVISE TYPE OF PIPE INTERSECTIONS
27	1/29/17	REVISE TYPE OF PIPE INTERSECTIONS
28	1/29/17	REVISE TYPE OF PIPE INTERSECTIONS
29	1/29/17	REVISE TYPE OF PIPE INTERSECTIONS
30	1/29/17	REVISE TYPE OF PIPE INTERSECTIONS

---

APPROVED

NO. DATE DESCRIPTION

1 1/29/17 REVISE TYPE OF PIPE INTERSECTIONS

2 1/29/17 REVISE TYPE OF PIPE INTERSECTIONS

3 1/29/17 REVISE TYPE OF PIPE INTERSECTIONS

4 1/29/17 REVISE TYPE OF PIPE INTERSECTIONS

5 1/29/17 REVISE TYPE OF PIPE INTERSECTIONS

6 1/29/17 REVISE TYPE OF PIPE INTERSECTIONS

7 1/29/17 REVISE TYPE OF PIPE INTERSECTIONS

8 1/29/17 REVISE TYPE OF PIPE INTERSECTIONS

9 1/29/17 REVISE TYPE OF PIPE INTERSECTIONS

10 1/29/17 REVISE TYPE OF PIPE INTERSECTIONS

11 1/29/17 REVISE TYPE OF PIPE INTERSECTIONS

12 1/29/17 REVISE TYPE OF PIPE INTERSECTIONS

13 1/29/17 REVISE TYPE OF PIPE INTERSECTIONS

14 1/29/17 REVISE TYPE OF PIPE INTERSECTIONS

15 1/29/17 REVISE TYPE OF PIPE INTERSECTIONS

16 1/29/17 REVISE TYPE OF PIPE INTERSECTIONS

17 1/29/17 REVISE TYPE OF PIPE INTERSECTIONS

18 1/29/17 REVISE TYPE OF PIPE INTERSECTIONS

19 1/29/17 REVISE TYPE OF PIPE INTERSECTIONS

20 1/29/17 REVISE TYPE OF PIPE INTERSECTIONS

21 1/29/17 REVISE TYPE OF PIPE INTERSECTIONS

22 1/29/17 REVISE TYPE OF PIPE INTERSECTIONS

23 1/29/17 REVISE TYPE OF PIPE INTERSECTIONS

24 1/29/17 REVISE TYPE OF PIPE INTERSECTIONS

25 1/29/17 REVISE TYPE OF PIPE INTERSECTIONS

26 1/29/17 REVISE TYPE OF PIPE INTERSECTIONS

27 1/29/17 REVISE TYPE OF PIPE INTERSECTIONS

28 1/29/17 REVISE TYPE OF PIPE INTERSECTIONS

29 1/29/17 REVISE TYPE OF PIPE INTERSECTIONS

30 1/29/17 REVISE TYPE OF PIPE INTERSECTIONS

Department of Public Works

GRAND MONTECITO PARKWAY IMPROVEMENTS  
STREET PLAN AND PROFILE  
STA 150+50.00 TO STA 156+56.19

107V3701

61

Replot