

Avoid overhead power line contact.  
**Call before you Overhead**  
 1-702-593-6111  
 NEVADA POWER ENVIRONMENT SAFETY SERVICES DEPARTMENT

Avoid cutting underground utility lines. It's costly.  
**Call before you Dig**  
 1-800-227-2600  
 UNDERGROUND SERVICE (USA)

### BENCHMARK

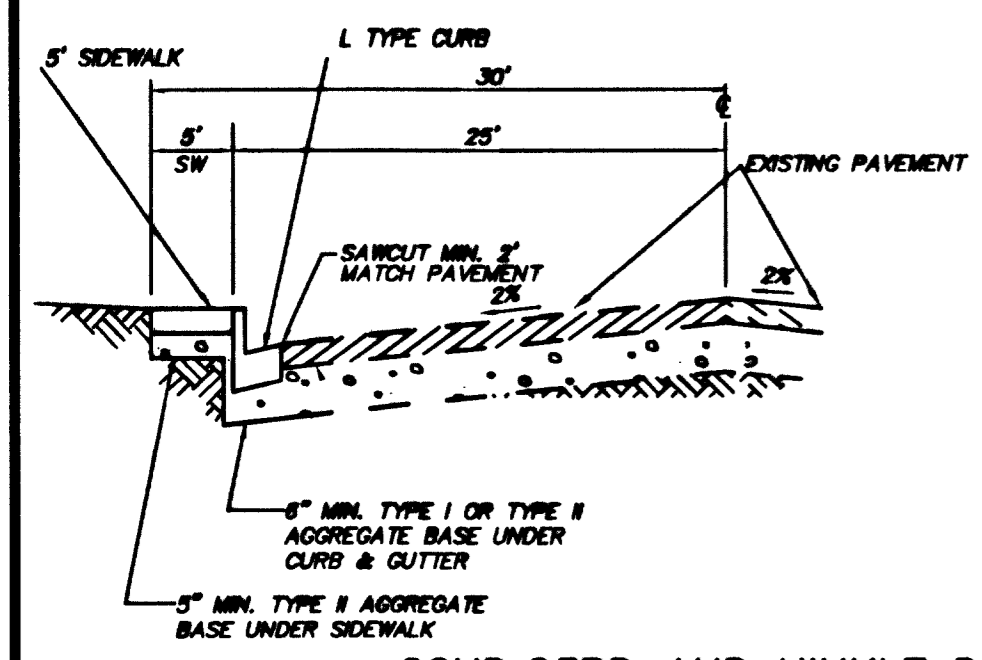
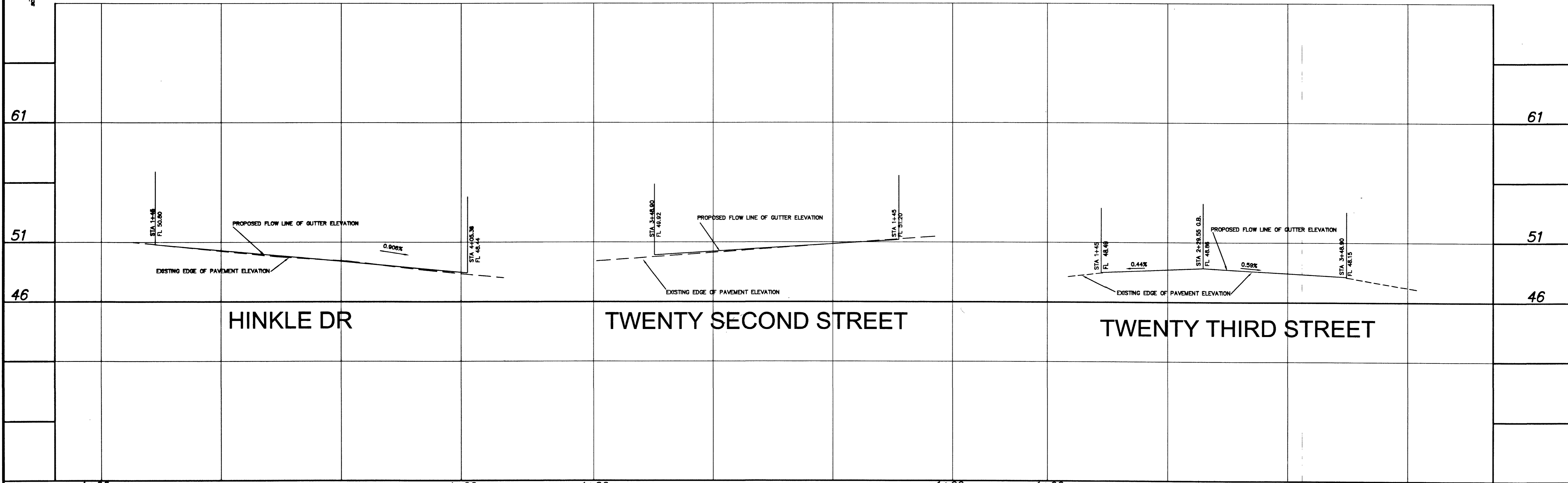
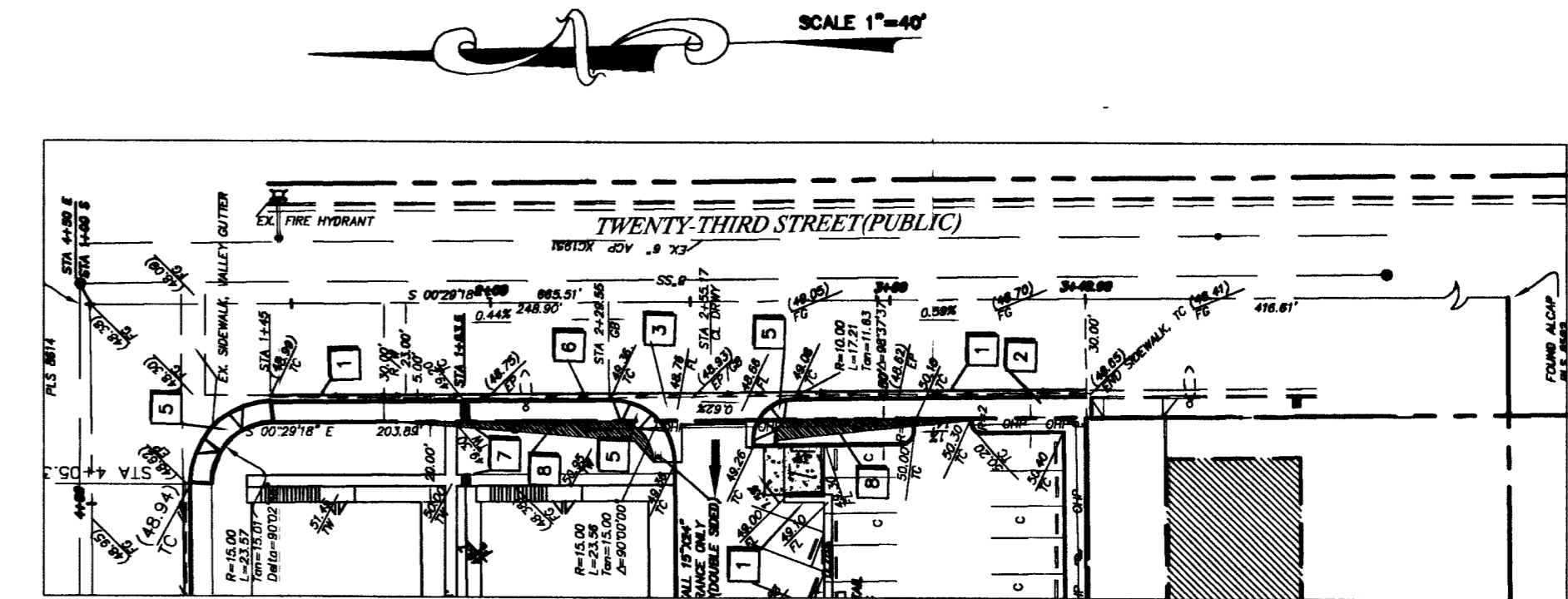
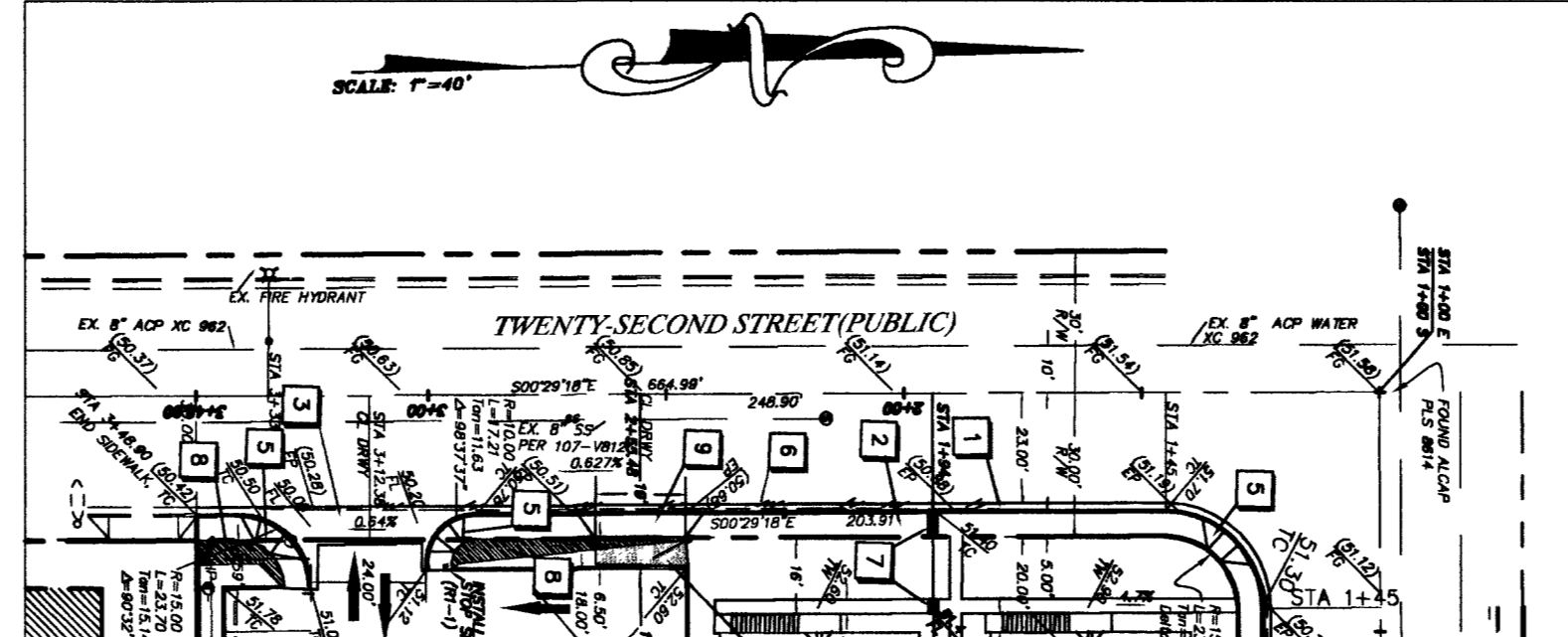
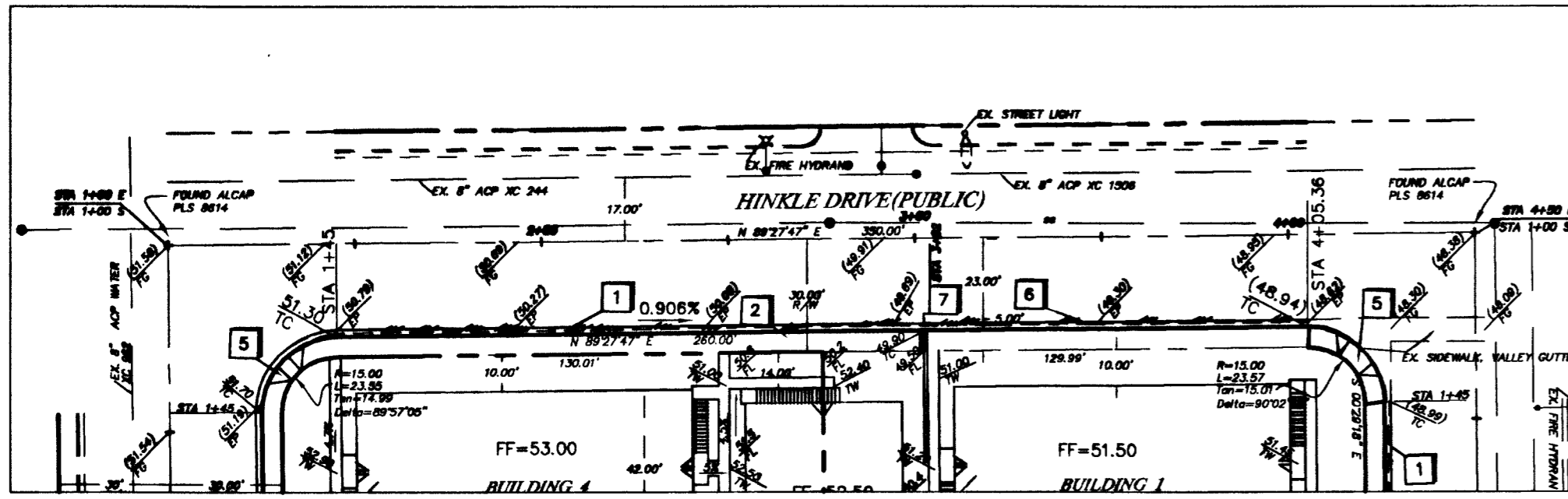
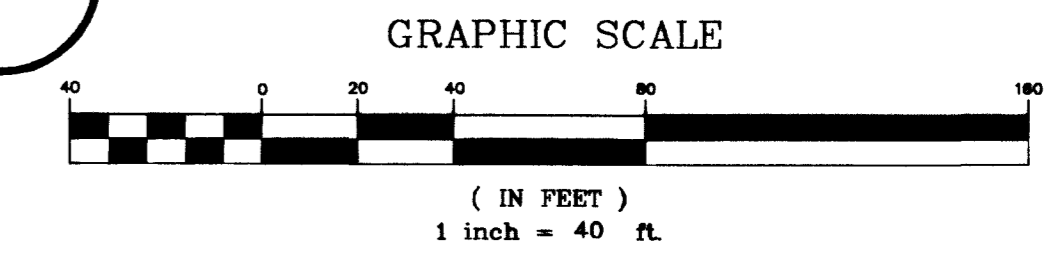
CLARK COUNTY VERTICAL CONTROL POINT "7C01 23S56", BEING A RIVET AND SQUARE ALUMINUM PLATE IN TOP OF CURB AT THE NORTHEAST CORNER OF OWENS AVE. AND McDANIEL ST. NEAR THE PC OF OWENS AVE.  
 ELEV. = 1858.13 (FEET)  
 565.7498(METERS)  
 NORTH AMERICAN VERTICAL DATUM OF 1988 (NAVD '88)

### BASIS OF BEARING

N89°32'53"E, BEING THE SOUTH LINE OF THE NORTHEAST QUARTER (NE 1/4) OF THE NORTHEAST QUARTER (NE 1/4) OF SECTION 26, TOWNSHIP 20 SOUTH, RANGE 61 EAST, M.D.M., AS SHOWN IN FILE 40, PAGE 29 OF SURVEYS ON FILE AT THE CLARK COUNTY, NEVADA RECORDER'S OFFICE.  
 CLARK COUNTY, NEVADA.

### LEGAL DESCRIPTION

BEING A PORTION OF THE NORTHEAST QUARTER (NE 1/4) OF THE NORTHEAST QUARTER (NE 1/4) OF SECTION 26, TOWNSHIP 20 SOUTH, RANGE 61 EAST, M.D.M., CITY OF LAS VEGAS, CLARK COUNTY, NEVADA.  
 APN 139-26-507-001 AND 002



22ND, 23RD AND HINKLE DRIVE  
 N.T.S.

PROFILE  
 SCALE: HORIZ. 1"=40'  
 VERT. 1"=4'

- #### CONSTRUCTION NOTES
- 1" TYPE CURB & GUTTER PER CLV IMPROVEMENT STANDARD DWG. NO. 216.
  - 5' WIDE CONCRETE SIDEWALK PER CLV IMPROVEMENT STANDARD DWG. NO. 234.
  - CONSTRUCT 8" WIDE CROSS GUTTER PER UNIFORM STANDARD DRAWING NO. 228.
  - "A" TYPE CURB PER CLV IMPROVEMENT STANDARD DWG. NO. 219.
  - CONSTRUCT SIDEWALK RAMP ( CASE I) PER CLV AREA STANDARD DRAWING NO. 236.( TRANSITION LENGTH A&B=8')
  - SAW CUT MIN. 2" & MATCH EXISTING
  - SIDE WALK DRAIN PER C.C. STD DWG NO. 236(2' WDE)
  - SIGHT VISIBILITY ZONES
  - CONSTRUCT EMERGENCY ACCESS AND DRIVEWAY PER CLV STD DWG 224 AND DETAIL SHEET C5
  - CONSTRUCT 0.5' TO 1.5' HIGH RETAINING WALL PER CITY OF LAS VEGAS STD DWG.

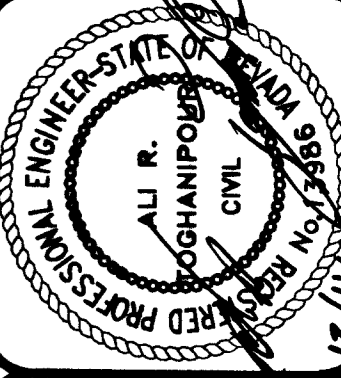
47476

107-V.3651

NO.	REVISION	APPROVED

**ART CONSULTING ENGINEERS**  
 Engineering Planning Commercial & Residential Hydrology and Traffic study  
 3355 SPRING MOUNTAIN RD., SUITE 6  
 LAS VEGAS, NEVADA 89102  
 (702) 261-8888  
 FAX: (702) 261-8888

OFFSITE IMPROVEMENTS  
**HINKLE DRIVE APARTMENTS (40) UNIT COMPLEX**  
 CITY OF LAS VEGAS, NEVADA



PROJECT NO.	2024
PROJECT MGR.	ART
DESIGN BY	ART
DRAWN BY	MC
DATE	3/1/02

C6