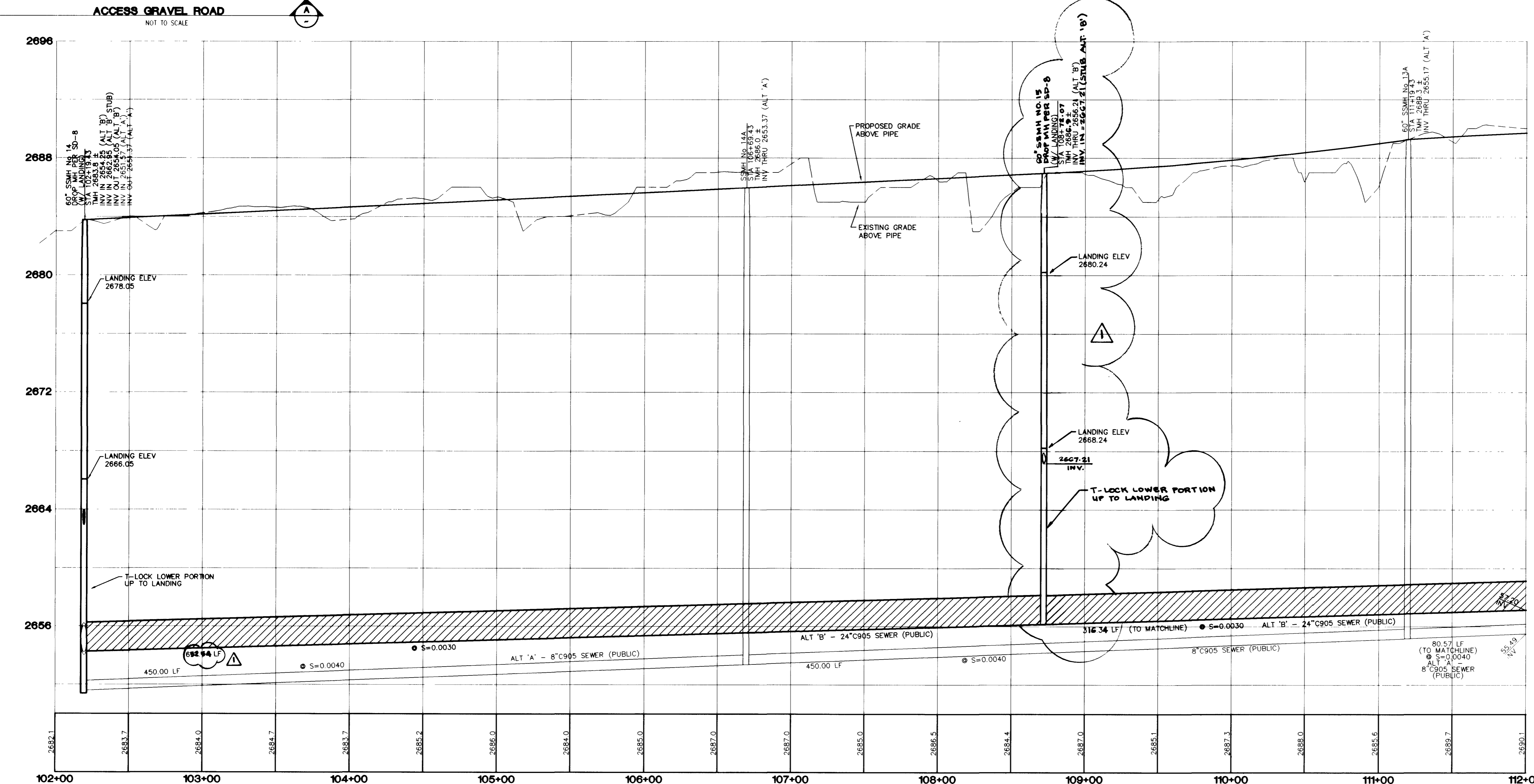


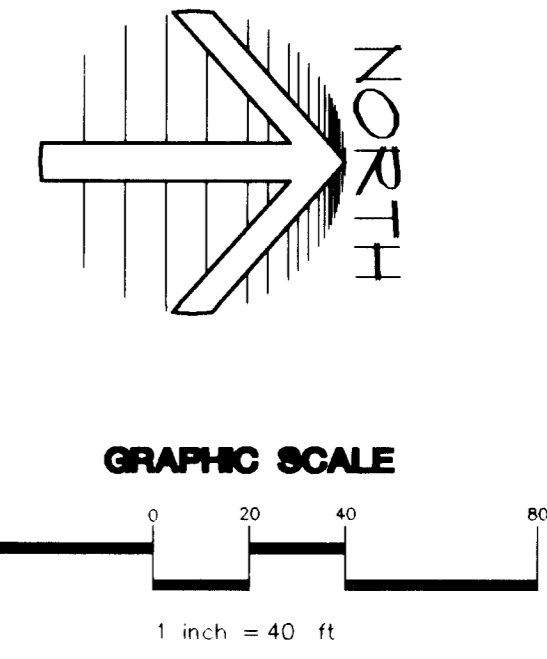
FORT APACHE ROAD PLAN
HORIZONTAL 1"=40'



PROFILE
HORIZONTAL 1"=40'
VERTICAL 1"=4'

GC WALLACE
J. Wallace
10/11/09
FOR REVISION ONLY

NOTE
EXISTING UTILITY LOCATIONS SHOWN HEREIN ARE APPROXIMATE ONLY. IT SHALL BE THE CONTRACTOR'S RESPONSIBILITY TO DETERMINE THE EXACT VERTICAL AND HORIZONTAL LOCATION OF ALL EXISTING UNDERGROUND UTILITIES PRIOR TO COMMENCING CONSTRUCTION. NO REPRESENTATION IS MADE THAT ALL EXISTING UTILITIES ARE SHOWN HEREON. THE ENGINEER ASSUMES NO RESPONSIBILITY FOR UTILITIES NOT SHOWN OR UTILITIES NOT SHOWN IN THEIR PROPER LOCATIONS. CALL BEFORE YOU DIG: 1 (800) 227-2600.
CONTRACTOR SHALL VERIFY HORIZONTAL AND VERTICAL LOCATION OF EXISTING UTILITIES AND NOTIFY THE DESIGN ENGINEER IMMEDIATELY OF ANY DISCREPANCIES PRIOR TO CONSTRUCTION.



NOTE
ALTERNATE 'A' SEWER DESIGN IS FOR BIDDING PURPOSES ONLY. ALT 'B' TO BE CONSTRUCTED.

BENCHMARK
PROJECT DATUM: NORTH AMERICAN VERTICAL DATUM OF 1988 (NAVD88)
CLARK COUNTY BENCHMARK: OC9017N6
NAVD88 ELEVATION: 799.117 METERS (2621.77 FEET)
RIVET AND SQUARE ALUMINUM PLATE IN TOP CENTER OF HEADWALL ON THE WEST SIDE OF U.S. 95 NEAR MILE MARKER 90.15.

NOTE
MANHOLES SHALL HAVE AN APPROVED LOCKING COVER PER PARAGRAPH 2.2.9 OF THE DESIGN AND CONSTRUCTION STANDARDS FOR WASTEWATER COLLECTION SYSTEMS.

BASIS OF BEARING:
N 89°09'50" W BEING THE BEARING OF THE SOUTH LINE OF THE SOUTHWEST QUARTER (SE 1/4) OF SECTION 7, TOWNSHIP 19 SOUTH, RANGE 59 EAST, M.D.M., CLARK COUNTY, NEVADA, AS SHOWN BY THAT RECORD OF SURVEY ON FILE IN THE OFFICE OF THE COUNTY RECORDER, CLARK COUNTY, NEVADA, IN BOOK 114 OF SURVEYS, AT FILE 57.

NOTE
FOR MANHOLE DEPTHS OVER 18', SEE DETAIL SHEET OS3.

Call before you Dig
1-800-227-2600

Call before you Overhead
1-702-593-6111

GRAND CANYON PARTNERS, LLC.
3220 NORTH BUFFALO DRIVE SUITE 203
LAS VEGAS, NEVADA 89129
(702)385-2050

CITY OF LAS VEGAS

2727 SOUTH RAINBOW BOULEVARD LAS VEGAS, NEVADA 89146-5148
PH: (702) 873-7550 FAX (702) 362-2597
nevada CONSULTING ENGINEERS • PLANNERS • LAND SURVEYORS

FORT APACHE ROAD 102+3102 - 112+00.00

GRAND CANYON APARTMENTS OFF-SITE SEWER

DRAWN BY: JAN 2002
DESIGNED BY: JULY 2001
CHECKED BY:
PROJECT NO: 6038-05
SCALE: 1"=40' HORIZ.
1"=4' VERT.

EXPIRES 06-30-07

PROFESSIONAL ENGINEER - SITE
DANIEL J. WOOD
12811 YOUNG RD
925-02

SHEET **OS8**
11 OF 18 SHEETS
DRAWING NO. 107-V3625-05

45210 46252

106038-05038-05-6038A-05SR.DWG (OS8)