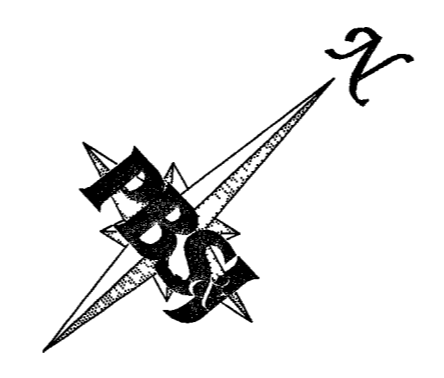
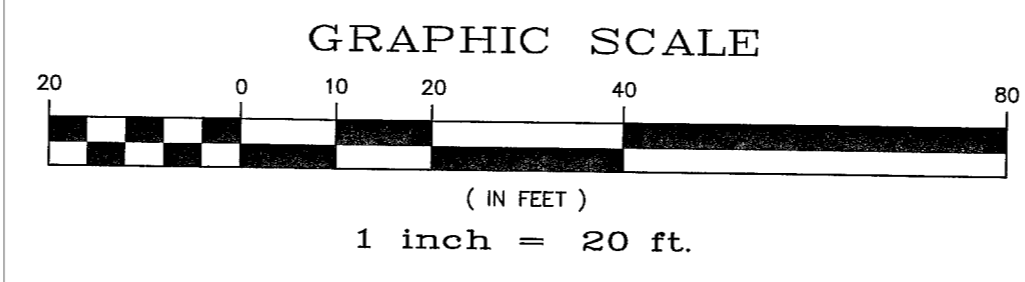


Call before you Dig
1-800-227-2600
Nevada Power Environment and Safety Services Department

Call before you Overhead
1-702-593-6111
Nevada Power Environment and Safety Services Department

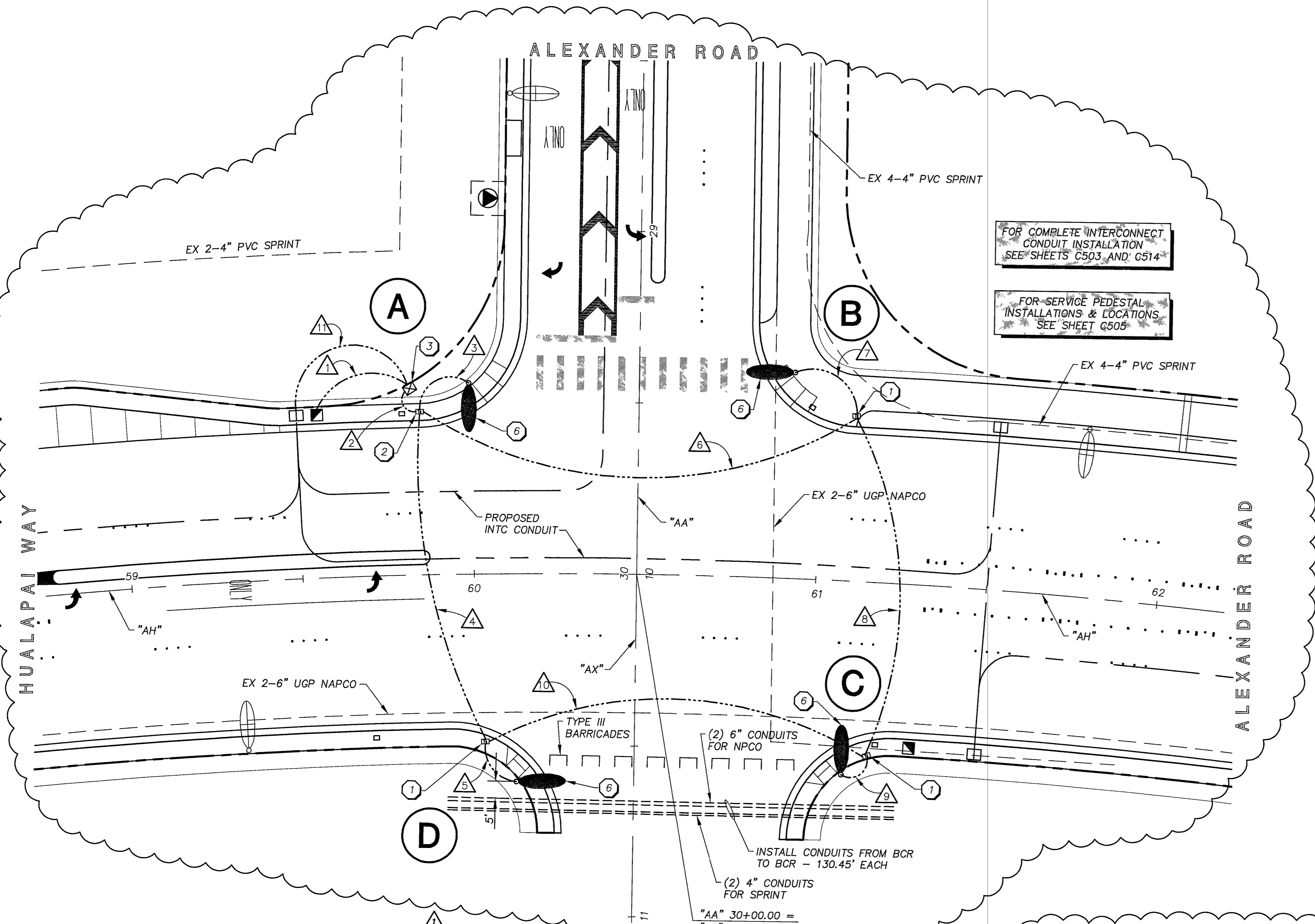


LEGEND

- EXISTING STREETLIGHT
- EXISTING 400W HPS STREETLIGHT
- PROPOSED 400W HPS STREETLIGHT
- PROPOSED 250W HPS STREETLIGHT
- PROPOSED PEDESTRIAN INDICATION
- 2070-N TRAFFIC CONTROLLER
- TRAFFIC SIGNAL INDICATION
- PROPOSED SIGNAL ARM
- VIDEO DETECTION CAMERA
- OPTICOM
- STREETLIGHT PULLBOX
- TRAFFIC SIGNAL PULLBOX
- #7 PULLBOX
- P-30 PULLBOX
- TYPE 200 PULLBOX
- EXISTING SERVICE POINT
- PROPOSED SERVICE PEDESTAL
- NPC TRANSFORMER
- CONDUIT RUN NUMBER
- ILLUMINATED STREET NAME SIGN
- EXISTING TRAFFIC SIGNAL CONDUIT
- PROPOSED TRAFFIC SIGNAL CONDUIT
- VIDEO DETECTION AREA

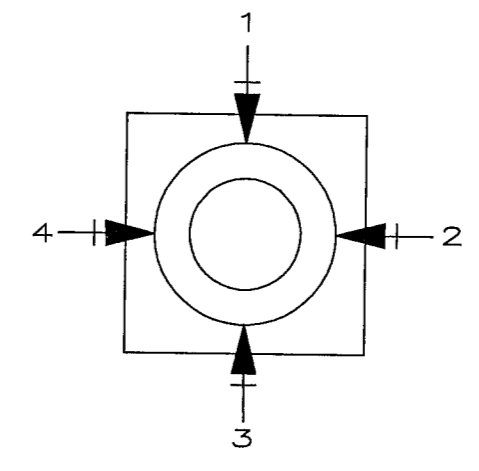
KEYNOTES

- E1 EXISTING #3 PULLBOX.
- E2 EXISTING #5 PULLBOX.
- E3 EXISTING #7 PULLBOX.
- 1 INSTALL #5 PULLBOX PER USD 328 AND 329.
- 2 INSTALL #7 PULLBOX PER USD 328 AND 329.
- 3 INSTALL TYPE "R" (EMPTY) CABINET FOR FUTURE TRAFFIC SIGNAL PER USD 404.307.
- 4 INTERCEPT EXISTING TRAFFIC SIGNAL CONDUIT, REMOVE CAP AND CONNECT.
- 5 INSTALL TYPE "R" CABINET FOR PROPOSED TRAFFIC SIGNAL PER USD 404.307.
- 6 INSTALL NEW 400 W STREETLIGHT ASSEMBLY ON XX-A AND XX TYPE SIGNAL POLES



FOR COMPLETE INTERCONNECT CONDUIT INSTALLATION SEE SHEETS C503 AND C514

FOR SERVICE PEDESTAL INSTALLATIONS & LOCATIONS SEE SHEET G505



QUADRANT LOCATOR
ARM OR SIGNAL LOCATION (Top View)

CONDUIT AND WIRE SCHEDULE

WIRE AND CABLE	FROM	TO	CONDUIT													
			1	2	3	4	5	6	7	8	9	10	11			
(4)#4, #8	SERVICE PED.	CONTROLLER														
(2)#10, #8	CONTROLLER	POLE A														
(2)#10, #8	CONTROLLER	POLE B														
(2)#10, #8	CONTROLLER	POLE C														
(2)#10, #8	CONTROLLER	POLE D														
#8, TRACE WIRE	TYPE 200	CONTROLLER														

CONDUIT SIZE EXISTING/NEW (E/N)

N 1-3" N 5-3" N 1-3" N 1-3" N 2-3" N 1-3" N 2-3" N 1-3" N 2-3" N 1-3" N 1-4"

A #8 GREEN GROUNDING WIRE SHALL BE RUN FROM THE CONTROLLER CABINET TO EACH SIGNAL POLE BASE
CONDUIT RUN NO. 10 TO HAVE 1-#8 TRACER WIRE
SEE SHEET C413 FOR CONDUIT SCHEMATIC

POLE SCHEDULE

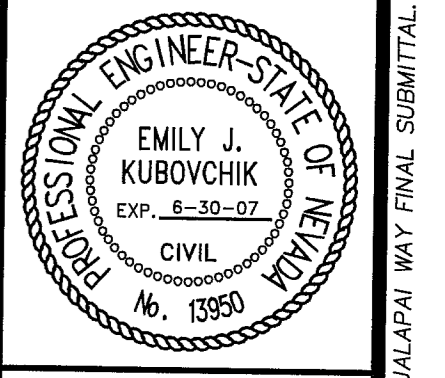
POLE	TYPE OF FOUNDATION	LOCATION STATION	TYPE	POLE				SIGNALS (VEH.)		SIGNALS (PED.)		PED. PUSH BUTTON		BLOCK No.	REMARKS
				SIGNAL ARM		LUMINAIRE ARM		TYPE	QUAD	TYPE	QUAD	QUAD	SIGN ARROW		
				QUAD	LNG.	QUAD	LNG.								
A	"L"	"AH" 59+99.04, 55.84' LT	XX-A			3	15'								
B	"H"	"AA" 29+40.52, 45.73' LT	XX			4	15'								
C	"L"	"AH" 61+10.26, 56.32' RT	XX-A			1	15'								
D	"H"	"AX" 10+60.83, 34.28' RT	XX			2	15'								

DEPARTMENT OF PUBLIC WORKS
ENGINEERING DESIGN SECTION

CITY ENGINEER: CHARLES KAJKOWSKI, JR., P.E.
CITY PROJECT ENGINEER: MARVIN STINE, P.E.
PROJECT MANAGER: ALI ZENHARI, P.E.
CHECK BY: LSB
DATE: FEB. 11, 2004
DRAWN BY: WMM

ALEXANDER ROAD/HUALAPAI WAY
ROAD IMPROVEMENTS PROJECT
CHEYENNE AVENUE TO DURANGO DRIVE

TRAFFIC SIGNAL UNDERGROUNDS PLAN
ALEXANDER ROAD AND HUALAPAI WAY



SHEET: **C416**
102 OF 124
DRAWING# 107-V-3594

T:\projects\1400\C416-1400 10-05-05 *USER: 14590 *XREFS: 1400-TP, 1400-BR, 1400-STLI 09-07-05, 1400-TRA, 1400-MP, 01-05-05, 1400-TSKW

98127