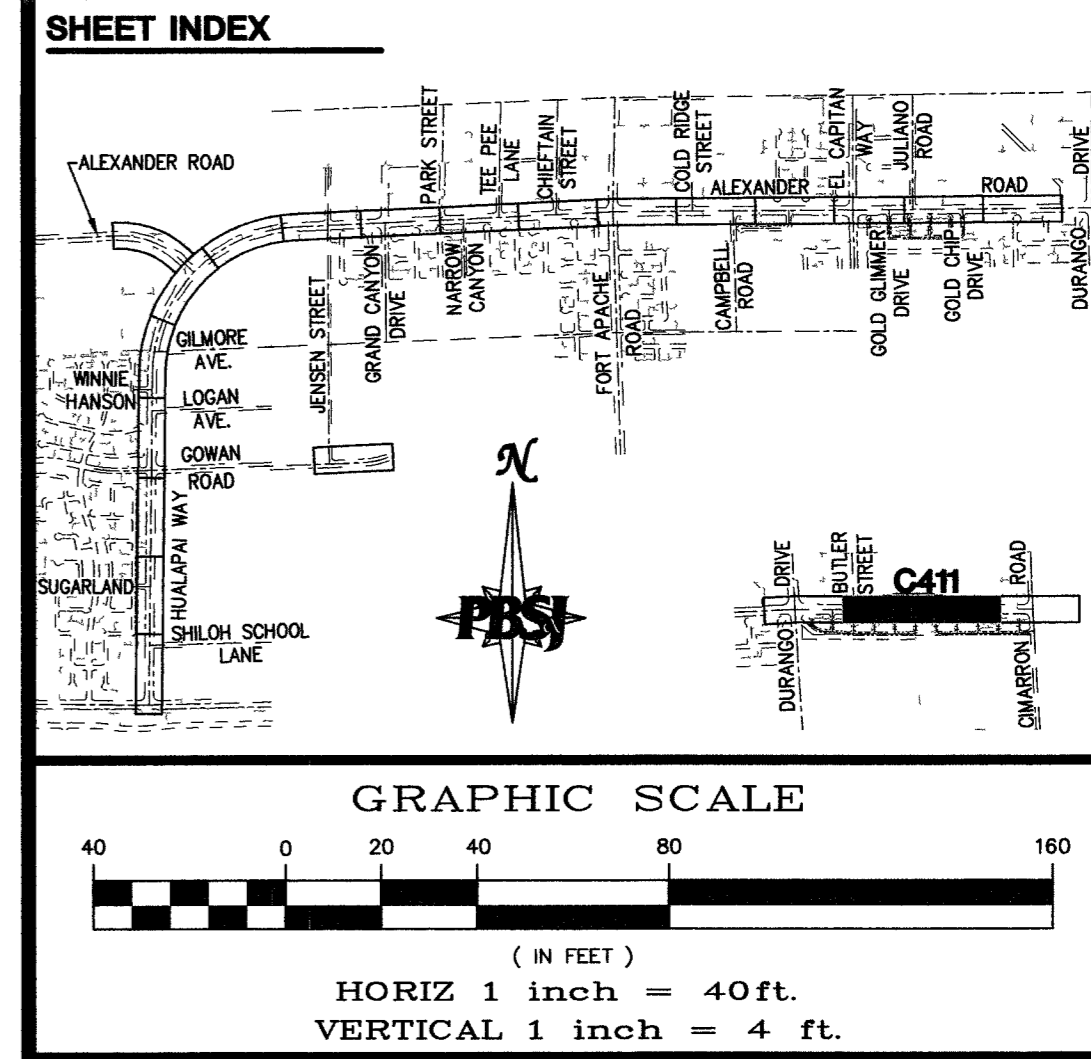
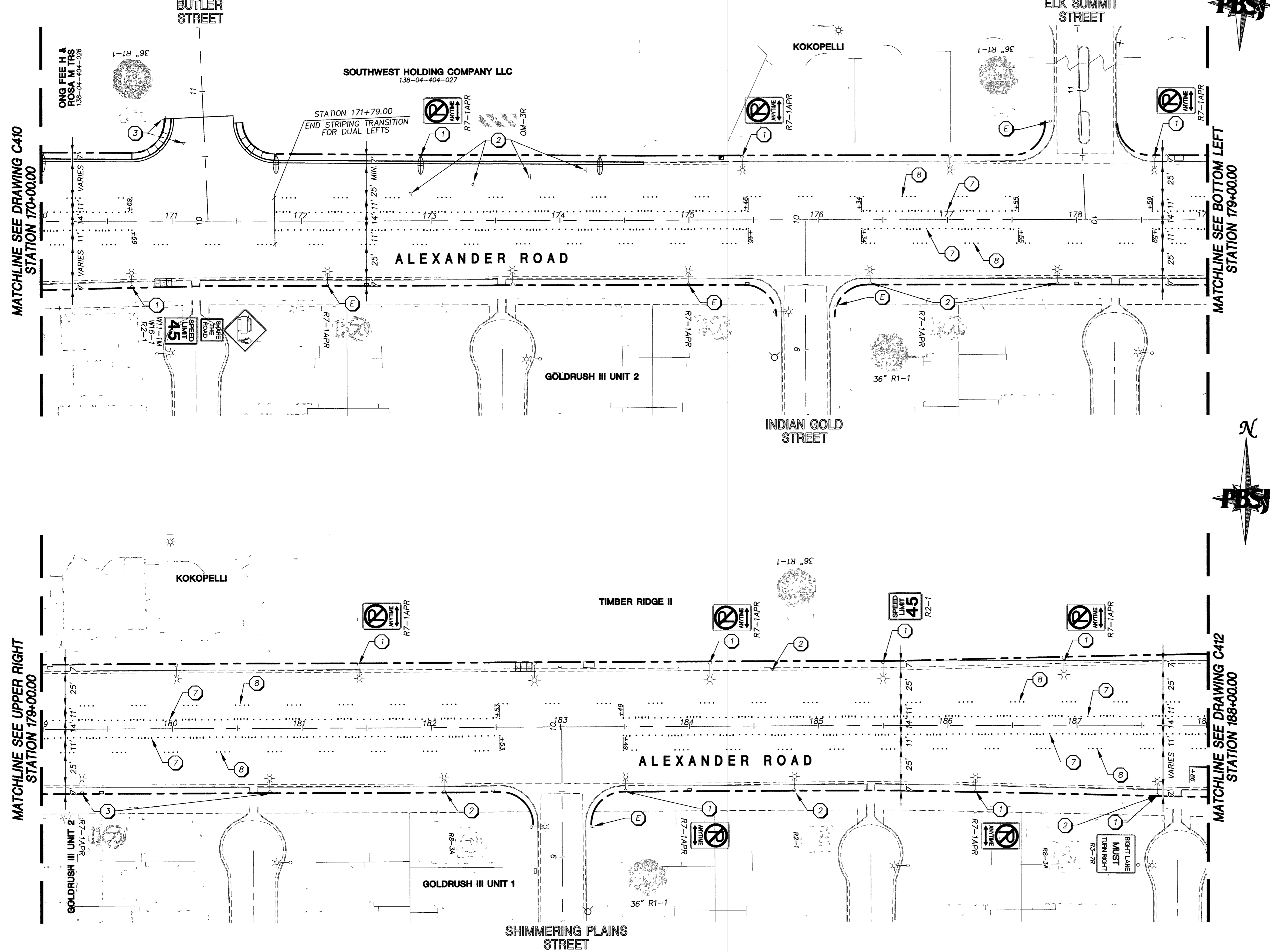


Call before you Dig
1-800-227-2600
Nevada Power, Environment and Safety Services Department

Call before you Overhead
1-702-593-6111
Nevada Power, Environment and Safety Services Department



BASIS OF BEARING
THE BASIS OF BEARINGS FOR THIS PROJECT IS GRID NORTH AS DEFINED BY THE NEVADA COORDINATE SYSTEM OF 1983 (NCS83), EAST ZONE, (2701), DETERMINED BY GIS CONTROL POINTS, "808" AND "877" AS SHOWN ON A RECORD OF SURVEY ON FILE IN THE CLARK COUNTY RECORDER'S OFFICE, IN FILE 88 OF SURVEYS, AT PAGE 53.

BENCHMARK
CITY OF LAS VEGAS BENCHMARK NO. 9LV00 7N4 - RIVET AND PLATE IN TOP OF CURB SOUTHEAST CORNER OF ALEXANDER ROAD AND GRAND CANYON DRIVE.
NAVD 1988 DATUM
ELEVATION = 792.858 METERS
2601.24 FEET

CAUTION:
EXISTING UTILITIES ARE LOCATED ON THE PLANS FROM A SEARCH OF AVAILABLE RECORDS. CONTRACTOR TO VERIFY LOCATIONS AND DEPTHS PRIOR TO CONSTRUCTION.

- KEY NOTES**
- 1 EXISTING SIGN(S) TO REMAIN.
 - 2 INSTALL NEW SIGN(S).
 - 3 REMOVE SIGN(S) AND SALVAGE.
 - 4 RELOCATE EXISTING SIGN(S).
 - 5 REMOVE SIGN(S) AFTER SIGNAL IS TURNED ON.
 - 6 EXISTING MARKINGS TO REMAIN.
 - 7 MEDIAN NOSE MARKING PER USD 248.
 - 8 TYPE 2 CENTERLINE PER USD 244.
 - 9 TYPE 4 LANE LINE PER USD 244A.
 - 10 STORAGE LANE LINE PER USD 246.
 - 11 DROP LINE PATTERN PER USD 246A.
 - 12 NOT USED
 - 13 SPECIAL LINE PATTERN PER DETAIL E SHEET C515
 - 14 NOT USED
 - 15 4" SOLID WHITE LINE (PAINT).
 - 16 24" WIDE CROSSWALK LINES (TYPE 1 PMF) PER USD 254A.
 - 17 WHITE PAVEMENT TURN ARROW SYMBOL (TYPE 1 PMF).
 - 18 WHITE PAVEMENT "ONLY" OR "BUSES" LEGEND (TYPE 1 PMF).
 - 19 50' SOLID YELLOW TRANSITION PER USD 245 (2 OF 3) (RPM AND TYPE 1 PMF)
 - 20 NOT USED
 - 21 TRANSITION PER USD 245 (3 OF 3) (TYPE 1 PMF).
 - 22 24" YELLOW DIAGONAL AT 45° O.C. (TYPE 1 PMF).
 - 23 INSTALL TWO 12" D3 STREET NAME SIGNS PER USD 249 AND 250.
 - 24 TYPE 1 CENTERLINE PER USD 244.

DEPARTMENT OF PUBLIC WORKS
ENGINEERING DESIGN SECTION

CITY ENGINEER: CHARLES KAJKOWSKI, JR., P.E.
CITY PROJECT ENGINEER: MARVIN STINE, P.E.
PROJECT MANAGER: ALI ZENHARI, P.E.
DESIGN BY: EK
DRAWN BY: LSB/DXJ

CHECK BY: AZ/EK
DATE: FEB. 11, 2004

ALEXANDER ROAD/HUALAPAI WAY
ROAD IMPROVEMENTS PROJECT
CHEYENNE AVENUE TO DURANGO DRIVE

SIGNING AND STRIPING
STA 170+00.00 TO STA 188+00.00

PROFESSIONAL ENGINEER-STATE OF NEVADA
EMILY K. KUBOVICH
EXP. 12-31-05
CIVIL
No. 19950
212-04

SHEET: **C411**
97 of 124
DRAWING: 107-V-3594

D:\Dwg\1400\C411-1400 *2-12-04 04:45pm *USER: lb1648 *XREFS: 1400-TP, 1400-BRR, 1400-STL, 1400-MP, 1400-TM, 1400-TRAF

98122
70634