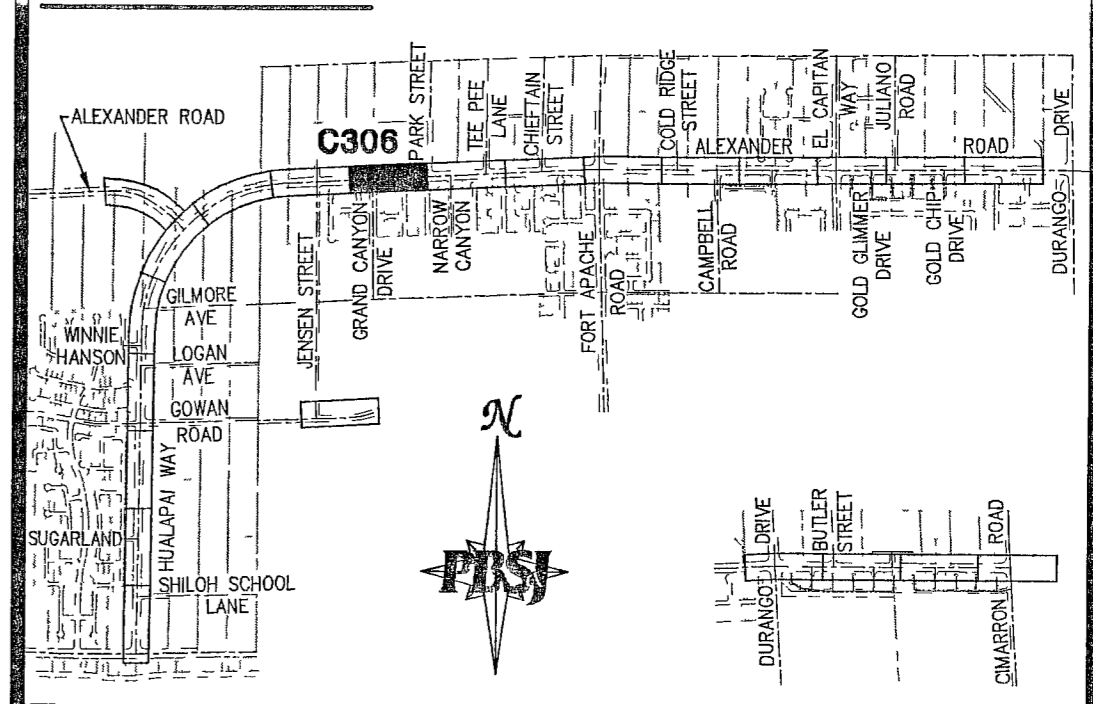
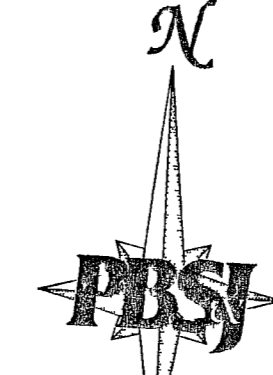


NOTE: FINISHED GRADE ELEVATIONS FOR MANHOLES AND DROP INLETS ARE AT THE CENTER OF MANHOLE LIDS AND T.O.C. AT THE CENTER OF DROP INLETS. SET FINISHED GRADE ELEVATIONS FOR THE EDGES OF MANHOLE LIDS AND T.O.C. AT DROP INLETS PER STREET SLOPES.

- 1 INSTALL PVC C-900 WATER SERVICE LATERAL, CAP AND BLOWOFF ASSEMBLY PER UDACS PLATE #6B AND #4A.
- 2 INSTALL 12"x8" TEE W/8" GATE VALVES AS SHOWN W/THRUST BLOCKS & ANCHOR BLOCKS PER UDACS PLATES 3# AND #5.
- 3 INSTALL PVC C-900 WATERLINE PER UDACS PLATE #6B.
- 4 INSTALL 48" SANITARY SEWER PER DETAIL 'D' DWG C330.
- 5 INSTALL 48" SANITARY SEWER MANHOLE TYPE I PER STD. DWG #403.
- 6 INSTALL SANITARY SEWER MANHOLE PER DETAIL THIS SHEET.



**BASIS OF BEARING**  
THE BASIS OF BEARINGS FOR THIS PROJECT IS GRID NORTH AS DEFINED BY THE NEVADA COORDINATE SYSTEM OF 1983 (NCS83), EAST ZONE, (2701), DETERMINED BY GIS CONTROL POINTS, "608" AND "877" AS SHOWN ON A RECORD OF SURVEY ON FILE IN THE CLARK COUNTY RECORDER'S OFFICE, IN FILE 88 OF SURVEYS, AT PAGE 53.

**BENCHMARK**  
CITY OF LAS VEGAS BENCHMARK NO. 9LV00 7N4 - RIVET AND PLATE IN TOP OF CURB SOUTHEAST CORNER OF ALEXANDER ROAD AND GRAND CANYON DRIVE.  
NAVD 1988 DATUM  
ELEVATION = 792.858 FEET  
2601.24 FEET

**CAUTION:**  
EXISTING UTILITIES ARE LOCATED ON THE PLANS FROM A SEARCH OF AVAILABLE RECORDS. CONTRACTOR TO VERIFY LOCATIONS AND DEPTHS PRIOR TO CONSTRUCTION.

- KEY NOTES**
- 1 REMOVE EXISTING MANHOLE.
  - 2 REMOVE EXISTING DROP INLET/BEEHIVE INLET.
  - 3 REMOVE EXISTING 36" STORM DRAIN PIPE.
  - 4 REMOVE EXISTING 66" STORM DRAIN PIPE.
  - 5 RANDOM IN PLACE EXISTING 18" STORM DRAIN PIPE.
  - 6 INSTALL TYPE I MANHOLE PER STD. DWG. #403.
  - 7 INSTALL TYPE II MANHOLE PER STD. DWG. #405.
  - 8 INSTALL TYPE III MANHOLE PER STD. DWG. #406.
  - 9 INSTALL JUNCTION MANHOLE TYPE I PER DETAIL 'A', DWG. C327.
  - 10 INSTALL PRECAST TEE W/48" RISER PER DETAIL 'B', DWG. C331 (W/ 30" MIN. ACCESS).
  - 11 INSTALL TYPE 'CM' DROP INLET PER DETAIL 'A', DWG. C329.
  - 12 INSTALL TYPE 'E' DROP INLET PER DETAIL 'A', DWG. C328.
  - 13 INSTALL TYPE 'F' DROP INLET PER DETAIL 'A', DWG. C328.
  - 14 INSTALL NDOT TYPE 3 DROP INLET WITH BACK WALL OPENING PER DETAIL 'D' AND DETAIL 'E', DWG. C332.
  - 15 INSTALL SWALE INLET PER DETAIL 'B', DWG. C329.
  - 16 CONSTRUCT NDOT TYPE II HEADWALL PER NDOT STANDARD PLAN SHEET B-20.1.4.
  - 17 INSTALL AWWA 8" C900 DRAINLINE.
  - 18 INSTALL AWWA 12" C900 DRAINLINE.
  - 19 INSTALL 12" RCP SD PER TRENCH DETAIL 'B', DWG. C330.
  - 20 INSTALL 18" RCP SD PER TRENCH DETAIL 'B', DWG. C330.
  - 21 INSTALL 24" RCP SD PER TRENCH DETAIL 'B', DWG. C330.
  - 22 INSTALL 30" RCP SD PER TRENCH DETAIL 'B', DWG. C330.
  - 23 INSTALL 36" RCP SD PER TRENCH DETAIL 'B', DWG. C330.
  - 24 INSTALL 42" RCP SD PER TRENCH DETAIL 'B', DWG. C330.
  - 25 INSTALL 48" RCP SD PER TRENCH DETAIL 'B', DWG. C330.
  - 26 INSTALL 54" RCP SD PER TRENCH DETAIL 'B', DWG. C330.
  - 27 INSTALL 60" RCP SD PER TRENCH DETAIL 'B', DWG. C330.
  - 28 INSTALL 66" RCP SD PER TRENCH DETAIL 'B', DWG. C330.
  - 29 INSTALL 72" RCP SD PER TRENCH DETAIL 'B', DWG. C330.
  - 30 INSTALL 78" RCP SD PER TRENCH DETAIL 'B', DWG. C330.
  - 31 INSTALL 34"x53" HE RCP SD PER TRENCH DETAIL 'B', DWG. C330.
  - 32 INSTALL 3" HIGH x 6" WIDE RCB SD PER TRENCH DETAIL 'B', DWG. C330.
  - 33 INSTALL 5" HIGH x 6" WIDE RCB SD PER TRENCH DETAIL 'B', DWG. C330.
  - 34 RELOCATE EXISTING WATERLINE PER DETAIL 'E', DWG. C330.
  - 35 RELOCATE EXISTING GAS (BY OTHERS).
  - 36 RELOCATE EXISTING UNDERGROUND POWER (BY NEVADA POWER COMPANY).
  - 37 RELOCATE EXISTING UNDERGROUND TELEPHONE (BY SPRINT TELEPHONE COMPANY).
  - 38 RELOCATE EXISTING UNDERGROUND CATV (BY COX COMMUNICATIONS LAS VEGAS, INC.).
  - 39 CONCRETE ENCASEMENT PER DETAIL 'A', DWG. C330.
  - 40 PERMANENT ASPHALT PATCH PER DETAIL 'B', DWG. C330.
  - 41 PIPE PENETRATION PER DETAIL 'A' DWG. C332.

DEPARTMENT OF PUBLIC WORKS  
ENGINEERING DESIGN SECTION

CITY ENGINEER: CHARLES KAJKOWSKI JR., P.E.  
CITY PROJECT ENGINEER: MARVIN STINE, P.E.  
DESIGN BY: WHJ  
DRAWN BY: LSB/WHJ

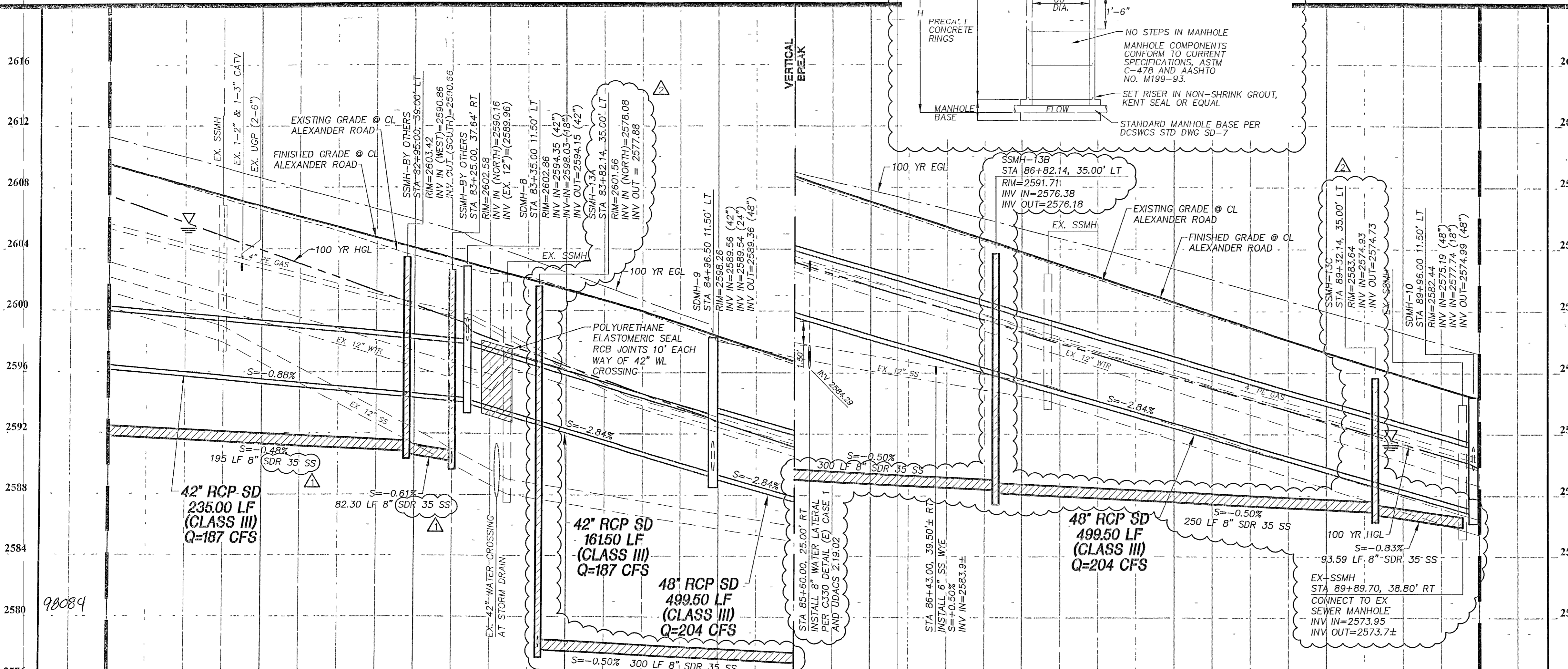
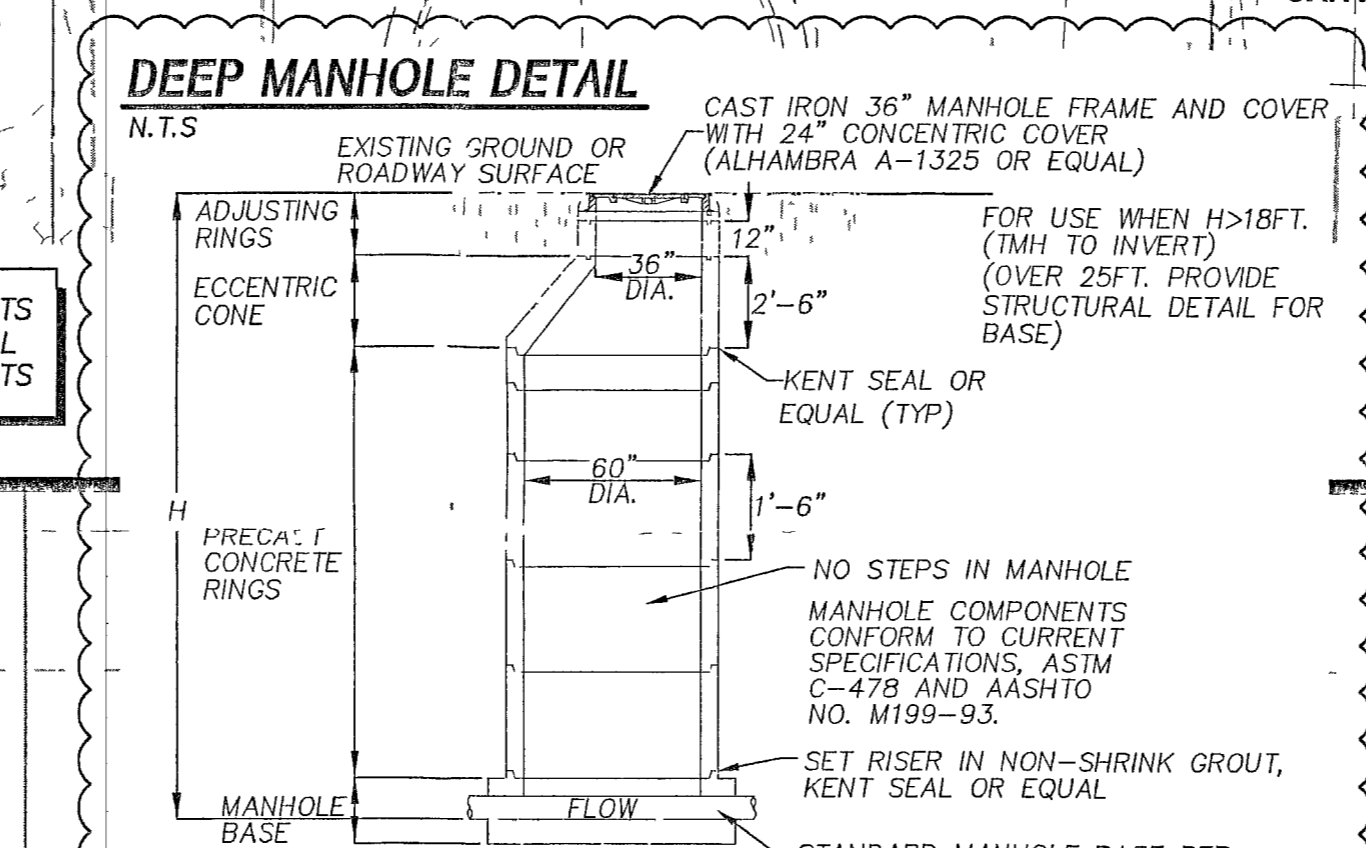
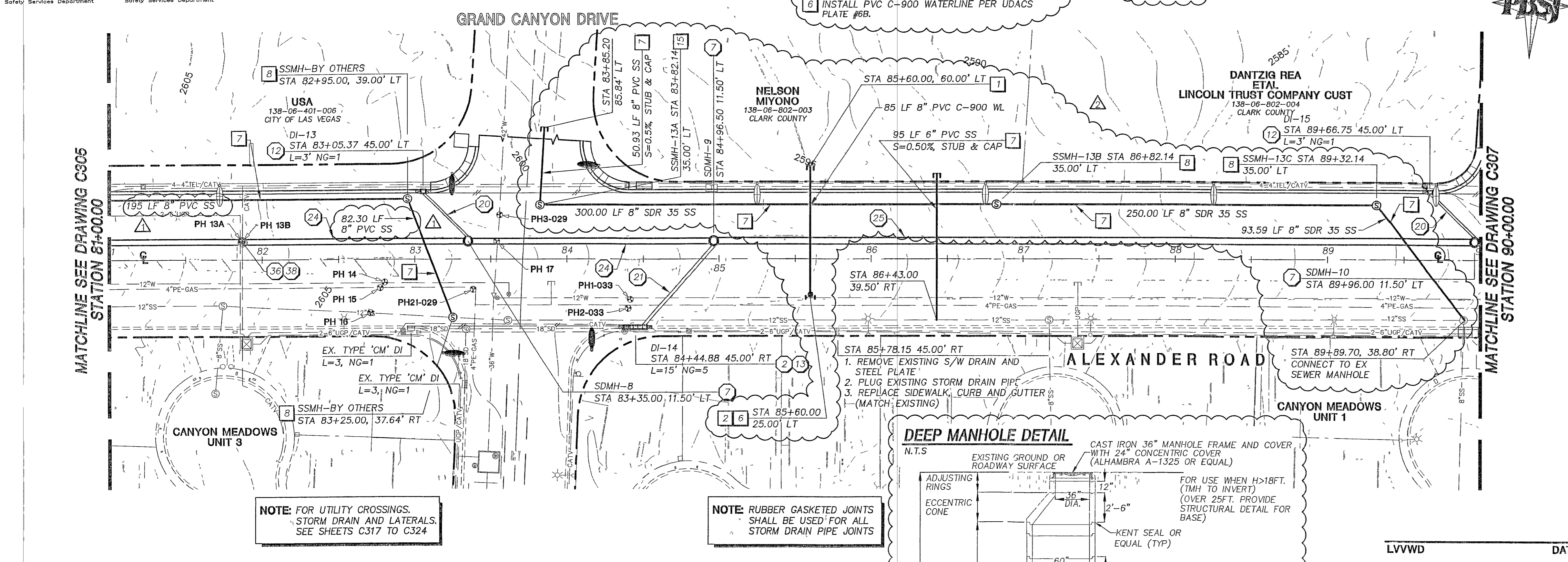
CHECK BY: LSB  
DATE: FEB. 11, 2004

ALEXANDER ROAD/HUALAPAI WAY  
ROAD IMPROVEMENTS PROJECT  
CHEYENNE AVENUE TO DURANGO DRIVE

ALEXANDER ROAD STORM DRAIN, WATER  
AND SEWER PLAN AND PROFILE  
STA 81+00.00 TO STA 90+00.00

PROFESSIONAL ENGINEER - STATE OF NEVADA  
ALLI R. ZENHARI  
EXP. 6-30-06  
CIVIL  
No. 06930

SHEET: C306  
59 OF 124



98084