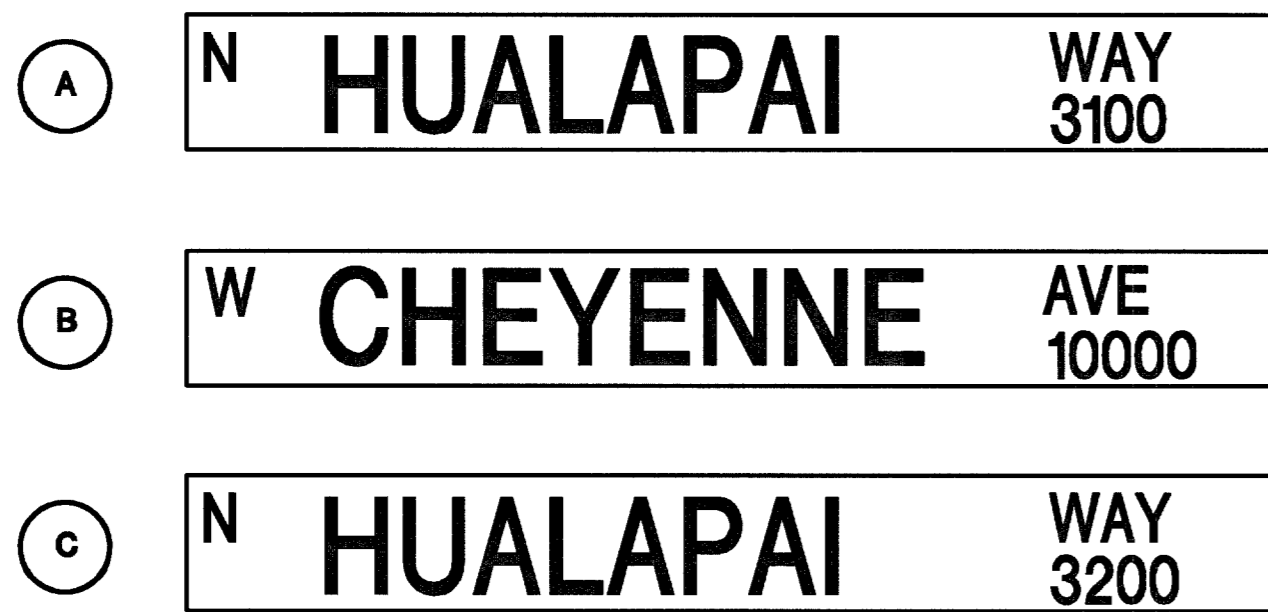


Call before you Dig  
1-800-227-2600  
Nevada Power Environment and Safety Services Department

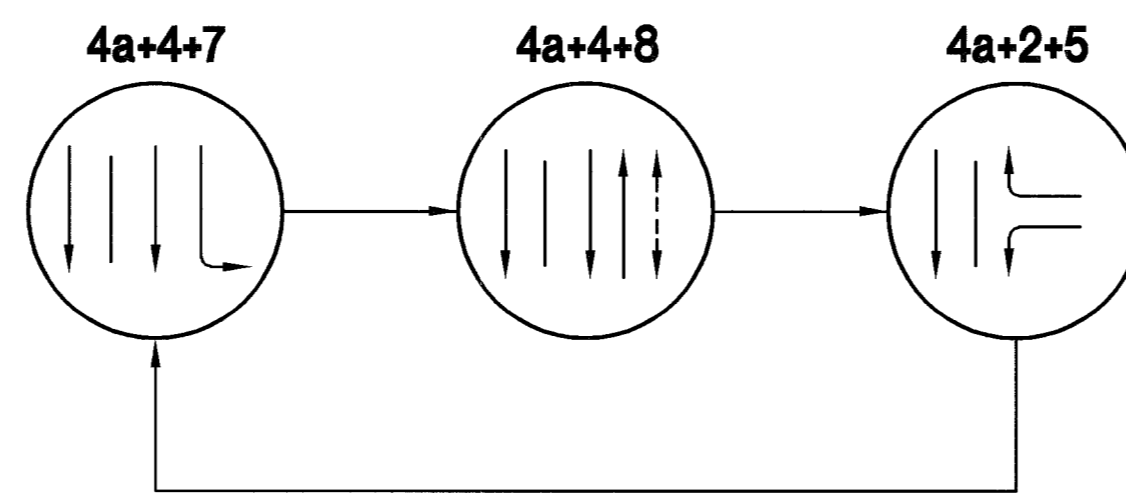
Call before you Overhead  
1-702-593-6111  
Nevada Power Environment and Safety Services Department

INTERNALLY ILLUMINATED STREET NAME SIGNS



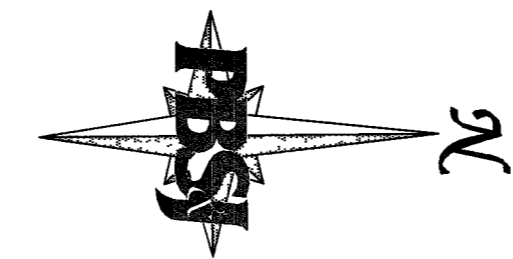
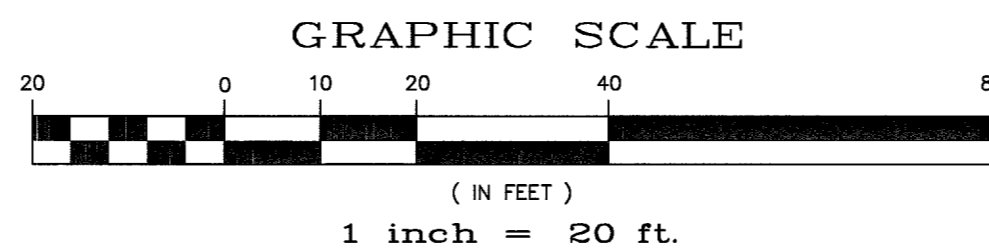
INTERNALLY ILLUMINATED STREETNAME SIGN NOTES

- CONTRACTOR SHALL PROVIDE THREE INTERNALLY ILLUMINATED STREET NAME SIGNS WITH WIDE ANGLE PRISMATIC SIGN FACES, ALL CAPITAL LETTERS.
- TWO "HUALAPAI", POLES A & C, (DOUBLE FACED).
- ONE "CHEYENNE", POLE B, (SINGLE FACED).
- SEE USD 404.416 AND 404.417 FOR DETAILS. ALL INTERNALLY ILLUMINATED STREET NAME SIGNS SHALL BE INSTALLED AS THE 8' WIDE SIGNS.



PHASE DIAGRAM

FLASHING OPERATION - ALL RED OPTICOM - PHASE 2, 4

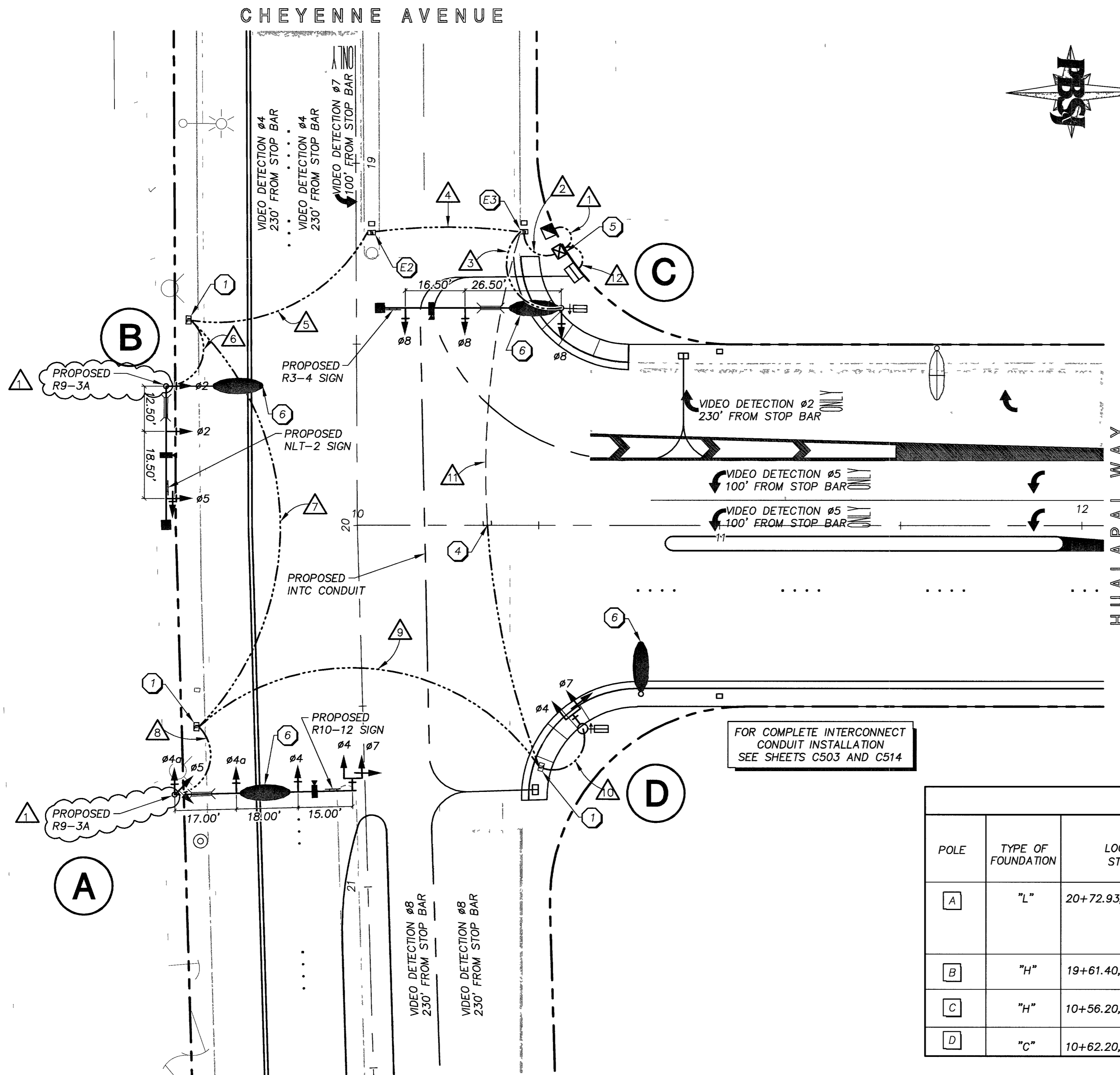


LEGEND

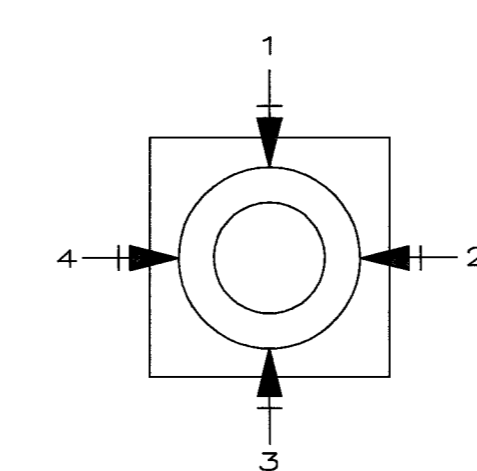
- EXISTING STREETLIGHT
- EXISTING 400W HPS STREETLIGHT
- PROPOSED 400W HPS STREETLIGHT
- PROPOSED 250W HPS STREETLIGHT
- PROPOSED PEDESTRIAN INDICATION
- 2070-N TRAFFIC CONTROLLER
- TRAFFIC SIGNAL INDICATION
- PROPOSED SIGNAL ARM
- VIDEO DETECTION CAMERA
- OPTICOM
- STREETLIGHT PULLBOX
- TRAFFIC SIGNAL PULLBOX
- #7 PULLBOX
- P-30 PULLBOX
- TYPE 200 PULLBOX
- EXISTING SERVICE POINT
- PROPOSED SERVICE PEDESTAL
- NPC TRANSFORMER
- CONDUIT RUN NUMBER
- ILLUMINATED STREET NAME SIGN
- EXISTING TRAFFIC SIGNAL CONDUIT
- PROPOSED TRAFFIC SIGNAL CONDUIT
- VIDEO DETECTION AREA

KEYNOTES

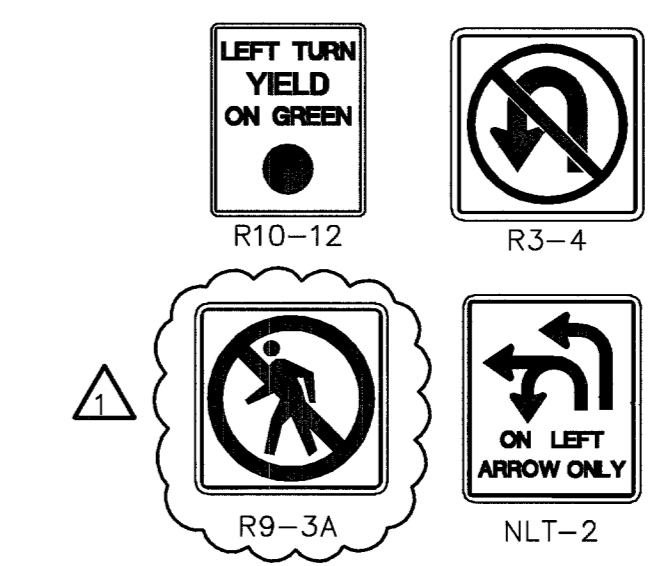
- E1 EXISTING #3 PULLBOX.
- E2 EXISTING #5 PULLBOX.
- E3 EXISTING #7 PULLBOX.
- 1 INSTALL #5 PULLBOX PER USD 328 AND 329.
- 2 INSTALL #7 PULLBOX PER USD 328 AND 329.
- 3 INSTALL TYPE "R" (EMPTY) CABINET FOR FUTURE TRAFFIC SIGNAL PER USD 404.307.
- 4 INTERCEPT EXISTING TRAFFIC SIGNAL CONDUIT, REMOVE CAP AND CONNECT.
- 5 INSTALL TYPE "R" CABINET FOR PROPOSED TRAFFIC SIGNAL PER USD 404.307.
- 6 INSTALL NEW 400 W STREETLIGHT ASSEMBLY PER USD 314, 320 AND 321.



FOR COMPLETE INTERCONNECT CONDUIT INSTALLATION SEE SHEETS C503 AND C514



QUADRANT LOCATOR  
ARM OR SIGNAL LOCATION (Top View)



CONDUIT AND WIRE SCHEDULE

WIRE AND CABLE	FROM	TO	CONDUIT													
			1	2	3	4	5	6	7	8	9	10	11	12		
(4)#4, #8	SERVICE PED.	CONTROLLER	X													
(2)#10, #8, COAX, (3) #16, (25)#14	CONTROLLER	POLE A	X	X	X	X	X	X	X	X	X	X	X	X	X	X
(2)#10, #8, OPTICOM, COAX, (3) #16, (25)#14	CONTROLLER	POLE B	X	X	X	X	X	X	X	X	X	X	X	X	X	X
(2)#10, #8, OPTICOM, COAX, (3) #16, (25)#14	CONTROLLER	POLE C	X	X	X	X	X	X	X	X	X	X	X	X	X	X
COAX, (3) #16, (25)#14	CONTROLLER	POLE D	X	X	X	X	X	X	X	X	X	X	X	X	X	X
#8	PULLBOX A	PULLBOX D														
#8, (25)#22	TYPE 200 AT HUALAPAI	CONTROLLER														
CONDUIT SIZE EXISTING/NEW (E/N)			N 1-3"	N 5-3"	N 1-3"	N 3-3"	N 3-3"	N 1-3"	N 2-3"	N 1-3"	N 1-3"	N 1-3"	N 1-3"	E/N 2-3"	N 1-4"	

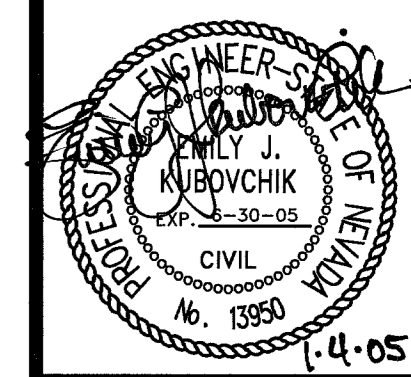
A #8 GREEN GROUNDING WIRE SHALL BE RUN FROM THE CONTROLLER CABINET TO EACH SIGNAL POLE BASE.

POLE SCHEDULE

POLE	TYPE OF FOUNDATION	LOCATION STATION	TYPE	SIGNAL ARM		LUMINAIRE ARM		SIGNALS (VEH.)		SIGNALS (PED.)		PED. PUSH BUTTON		BLOCK No.	REMARKS
				QUAD	LNG.	QUAD	LNG.	TYPE	QUAD	TYPE	QUAD	SIGN ARROW			
A	"L"	20+72.93, 52.5' RT	XX-A	2	50'	2	15'	(2) M-2 (1) M-5 B-2T	MAST MAST 4	-	-	-	-	3100	INSTALL INTERNALLY ILLUMINATED STREET NAME SIGN ON SIGNAL MAST ARM #5 INDICATIONS SHALL BE ALL ARROWS #4A INDICATIONS SHALL HAVE LOUVERED GREEN BALLS SUCH THAT ONLY TRAFFIC IN THE BYPASS LANE CAN SEE THEM UPON APPROACH
B	"H"	19+61.40, 52.5' RT	XX	3	35'	2	15'	(2) M-2 B-1T	MAST 4	-	-	-	-	10000	INSTALL INTERNALLY ILLUMINATED STREET NAME SIGN ON SIGNAL MAST ARM #5 INDICATIONS SHALL BE ALL ARROWS
C	"H"	10+56.20, 60.07' LT	XX	4	45'	4	15'	(2) M-2 B-1T	MAST 1	W-0T	3	4	RT	3200	INSTALL INTERNALLY ILLUMINATED STREET NAME SIGN ON SIGNAL MAST ARM
D	"C"	10+62.20, 56.18' RT	1-A	-	-	-	-	A-16T	POST TOP	W-0T	1	4	LT		

DEPARTMENT OF PUBLIC WORKS  
ENGINEERING DESIGN SECTION  
CITY ENGINEER: CHARLES KAJKOWSKI JR., P.E.  
CITY PROJECT ENGINEER: MARVIN STINE, P.E.  
DESIGN BY: LSB  
PROJECT MANAGER: ALI ZENHARI, P.E.  
CHECK BY: LSB  
DATE: FEB. 11, 2004  
DRAWN BY: LSB/DXJ

ALEXANDER ROAD/HUALAPAI WAY  
ROAD IMPROVEMENTS PROJECT  
CHEYENNE AVENUE TO DURANGO DRIVE  
TRAFFIC SIGNAL AND UNDERGROUNDS PLAN  
CHEYENNE AVENUE AND HUALAPAI WAY



SHEET: C414  
100 OF 124  
DRAWING# 107-V-3594

T:\projects\1400\C414-1400-01-04-05 41-04-05 03:49pm USER: 11122 \*REFS: 1400-BR, 1400-WP, 1400-TP, 1400-STL, 1400-TRAF, 1400-TSKW