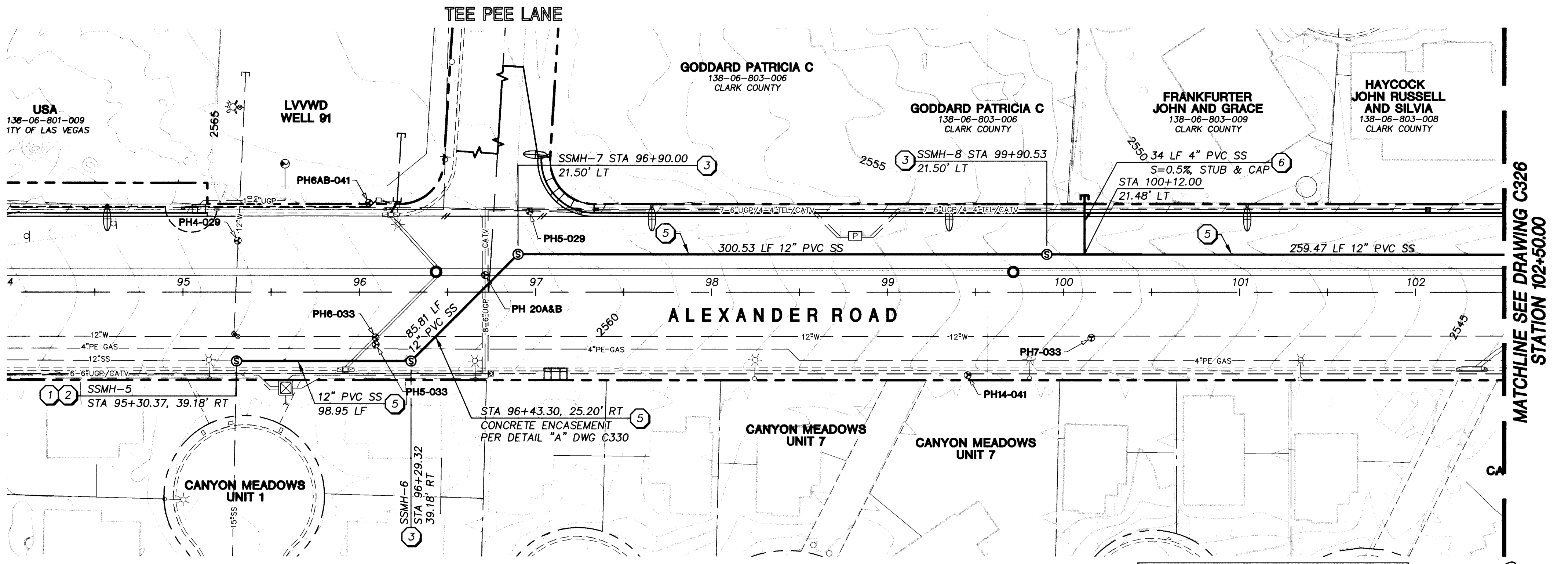


Call before you Dig  
 1-800-227-2600  
 Nevada Power, Environment and Safety Services Department

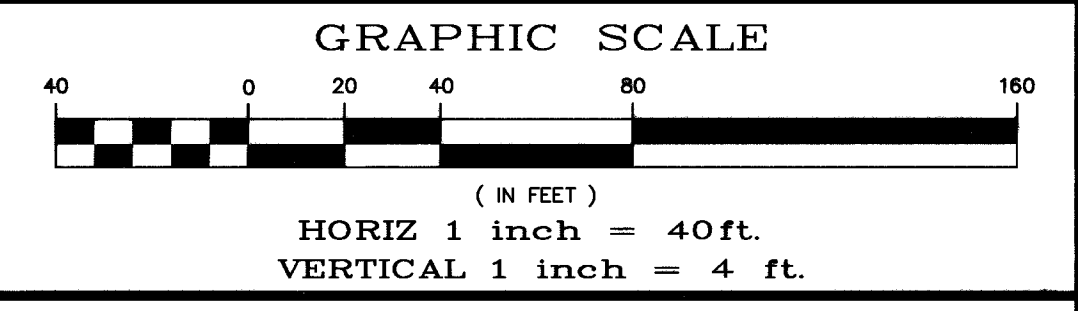
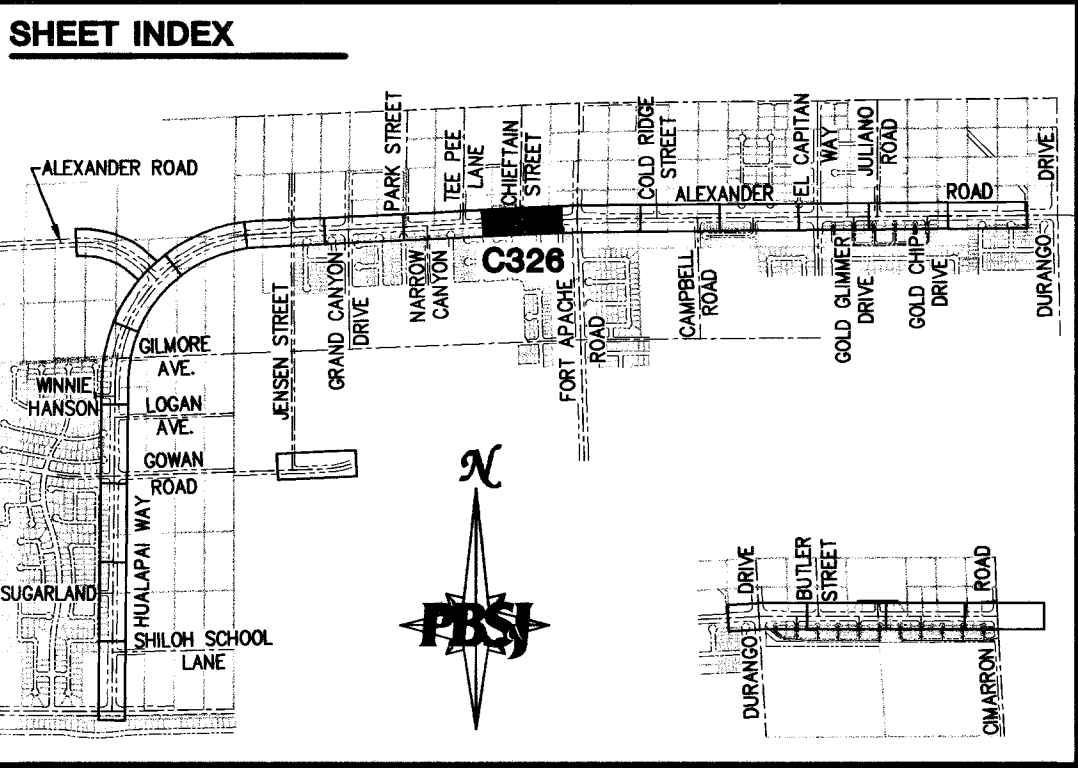
Call before you Overhead  
 1-702-593-6111  
 Nevada Power, Environment and Safety Services Department

**NOTE:** CONTRACTOR TO PROVIDE SANITARY SEWER BYPASS DURING REMOVAL AND INSTALLATION OF EXISTING AND NEW SSMH. COST OF WHICH IS TO BE INCIDENTAL TO THE WORK.



**NOTE:** FOR STORM DRAIN PLAN AND PROFILES SEE SHEETS C302 TO C324

Robert J. Morgan  
 LVVWD  
 DATE: 6/2/04

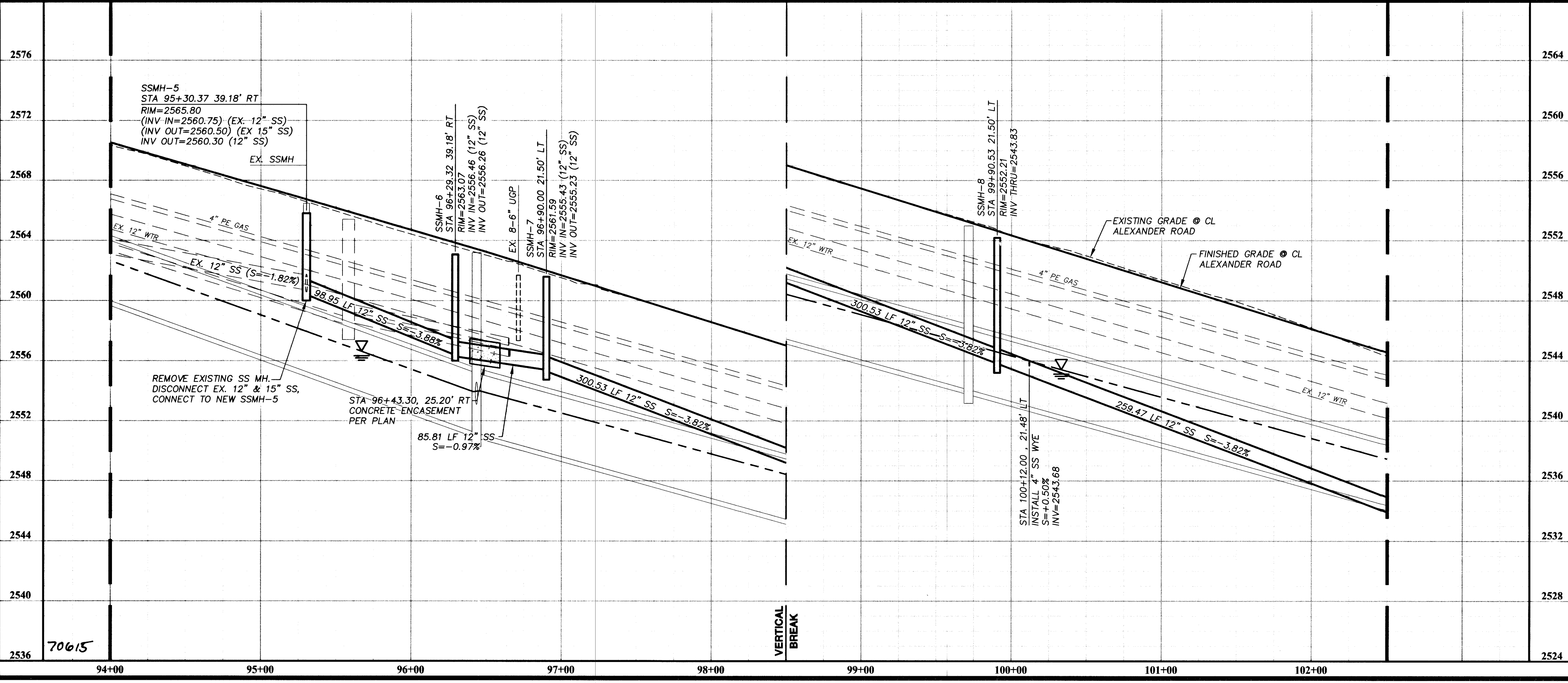


**BASIS OF BEARING**  
 THE BASIS OF BEARINGS FOR THIS PROJECT IS GRID NORTH AS DEFINED BY THE NEVADA COORDINATE SYSTEM OF 1983 (NCS83), EAST ZONE, (2701), DETERMINED BY GIS CONTROL POINTS. "808" AND "877" AS SHOWN ON A RECORD OF SURVEY ON FILE IN THE CLARK COUNTY RECORDER'S OFFICE, IN FILE 88 OF SURVEYS, AT PAGE 53.

**BENCHMARK**  
 CITY OF LAS VEGAS BENCHMARK NO. 9LV00 7N4 - RIVET AND PLATE IN TOP OF CURB SOUTHEAST CORNER OF ALEXANDER ROAD AND GRAND CANYON DRIVE.  
 NAVD 1988 DATUM  
 ELEVATION = 792.858 METERS  
 2601.24 FEET

**CAUTION:**  
 EXISTING UTILITIES ARE LOCATED ON THE PLANS FROM A SEARCH OF AVAILABLE RECORDS. CONTRACTOR TO VERIFY LOCATIONS AND DEPTHS PRIOR TO CONSTRUCTION.

- KEY NOTES**
- REMOVE EXISTING MANHOLE.
  - CONSTRUCT 60" SANITARY SEWER MANHOLE TYPE 1A PER STD. DWG #404, WITH GATES PER DETAIL 'A', DWG. C331.
  - CONSTRUCT 48" SANITARY SEWER MANHOLE TYPE A PER STD. DWG #403.
  - INSTALL 8" PVC SANITARY SEWER PER DETAIL 'D', DWG. C330.
  - INSTALL 12" PVC SANITARY SEWER PER DETAIL 'D', DWG. C330.
  - INSTALL PVC SANITARY SEWER LATERAL PER DETAIL 'D', DWG. C330.
  - REMOVE EXISTING BLOWOFF, CONNECT TO EXISTING WATERLINE.
  - INSTALL PVC C-900 WATERLINE PER UDACS PLATE #6B.
  - INSTALL 2" BLOWOFF ASSEMBLY PER UDACS PLATE #4A.
  - INSTALL 90° BEND PER UDACS PLATE #5.
  - INSTALL 12"x6" TEE W/6" GATE VALVES AS SHOWN W/THRUST BLOCKS AND ANCHOR BLOCKS PER UDACS PLATES #3# AND #5.
  - INSTALL 12"x6" REDUCER.
  - INSTALL D.I.P. WATERLINE PER UDACS PLATE #6B.



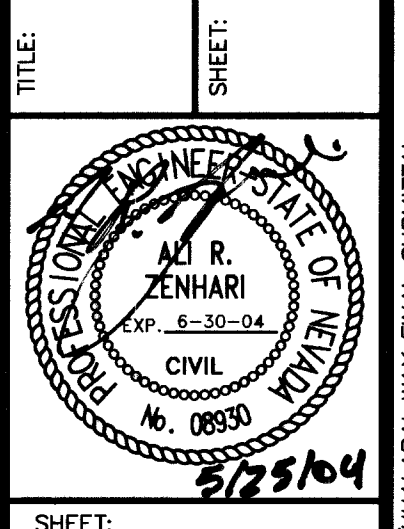
70615

DEPARTMENT OF PUBLIC WORKS  
 ENGINEERING DESIGN SECTION

CITY ENGINEER: CHARLES KAJKOWSKI, JR., P.E.  
 CITY PROJECT ENGINEER: MARVIN STINE, P.E.  
 PROJECT MANAGER: ALI ZENHARI, P.E.  
 DESIGN BY: WHJ  
 DRAWN BY: LSB/WHJ

CHECK BY: AZ  
 DATE: FEB. 11, 2004

ALEXANDER ROAD/HUALAPAI WAY  
 ROAD IMPROVEMENTS PROJECT  
 CHEYENNE AVENUE TO DURANGO DRIVE  
 AND WATER LINE PLAN AND PROFILE  
 STA 95+30.37 TO STA 102+50.00



SHEET: C325  
 78 of 124  
 DRAWING# 107-V-3584

D:\Draws\1400\C325-1400 \*USER: 11648 \*XREFS: 1400-BRR, 1400-TF, 1400-MP, 1400-FRG, 1400-MPS, 1400-STL, 1400-MPS, 1400-UT, 1400-PFS, 1400-PPSS, 1400-PRR-CL