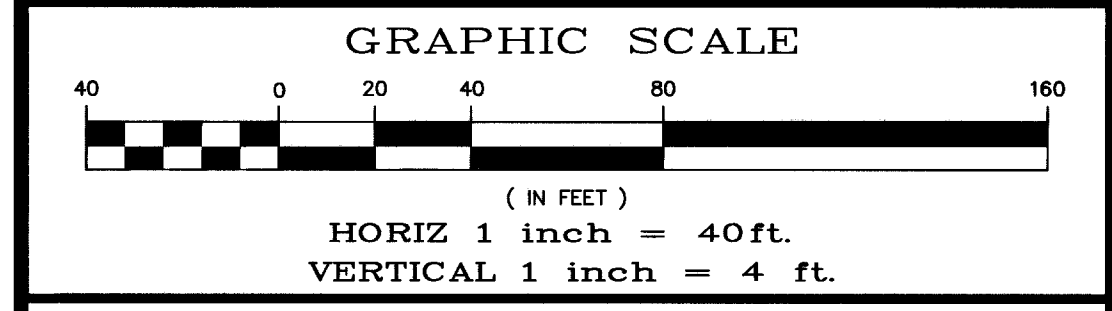
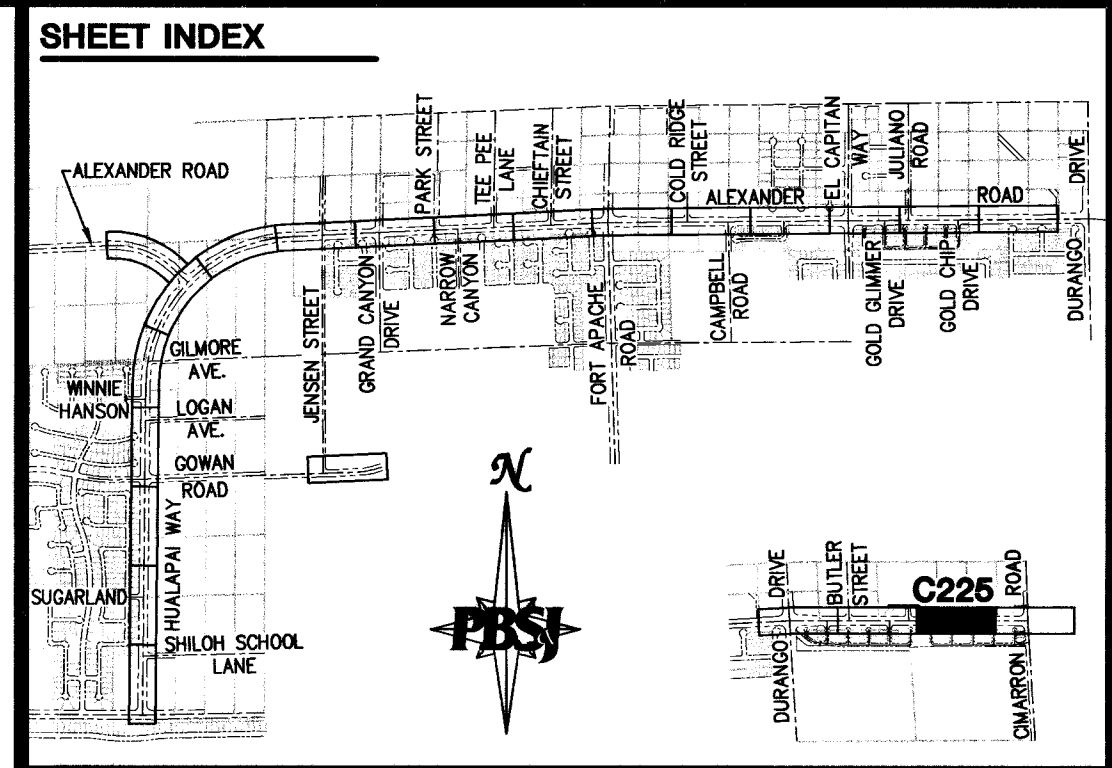
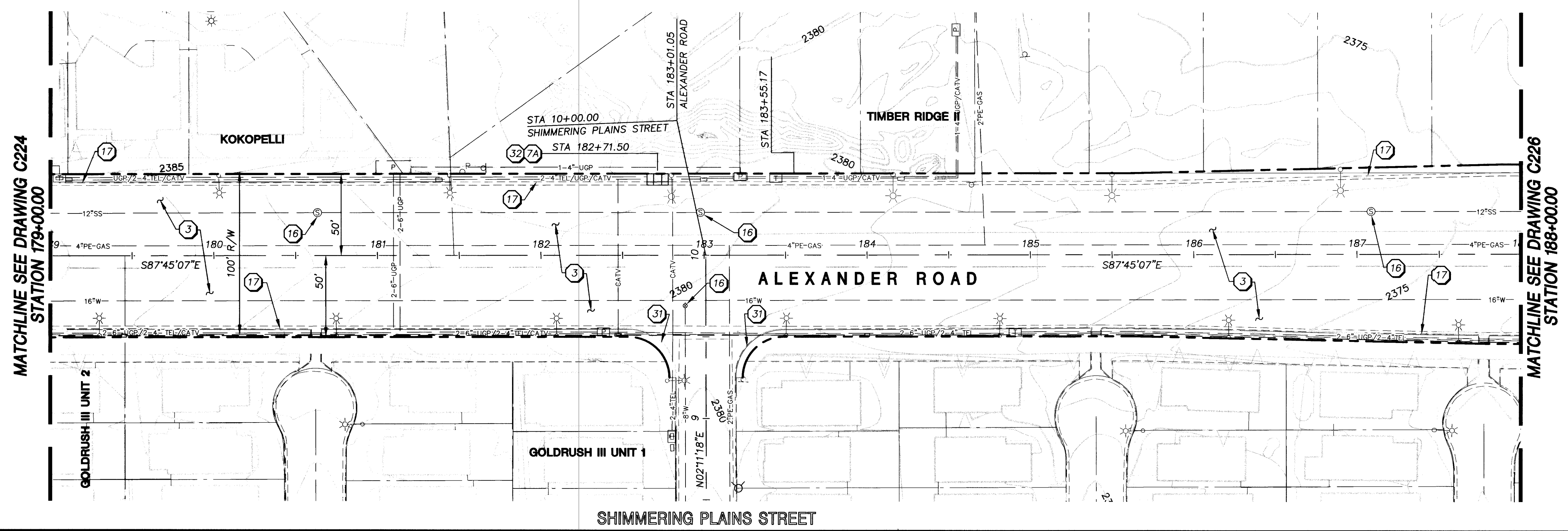


Call before you Dig  
1-800-227-2600  
Nevada Power Environment and Safety Services Department

Call before you Overhead  
1-702-593-6111  
Nevada Power Environment and Safety Services Department

Robert J. Morgan  
LVVWD  
9/2/04  
DATE

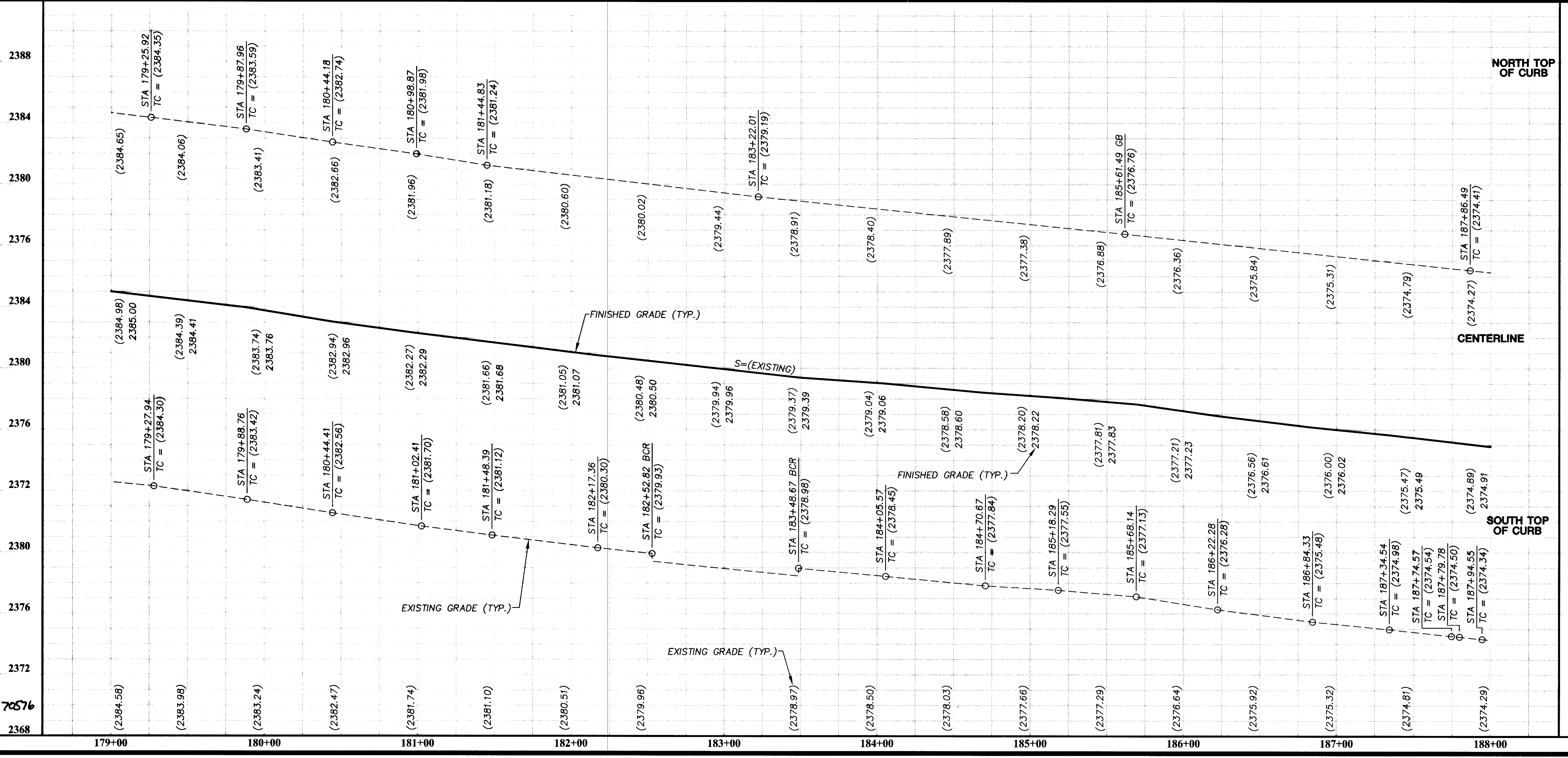


**BASIS OF BEARING**  
THE BASIS OF BEARINGS FOR THIS PROJECT IS GRID NORTH AS DEFINED BY THE NEVADA COORDINATE SYSTEM OF 1983 (NCS83), EAST ZONE, (2701), DETERMINED BY GIS CONTROL POINTS. "808" AND "877" AS SHOWN ON A RECORD OF SURVEY ON FILE IN THE CLARK COUNTY RECORDER'S OFFICE, IN FILE 88 OF SURVEYS, AT PAGE 53.

**BENCHMARK**  
CITY OF LAS VEGAS BENCHMARK NO. 9LV00 7N4 - RIVET AND PLATE IN TOP OF CURB SOUTHEAST CORNER OF ALEXANDER ROAD AND GRAND CANYON DRIVE.  
NAVD 1988 DATUM  
ELEVATION = 792.858 METERS  
2601.24 FEET

**CAUTION:**  
EXISTING UTILITIES ARE LOCATED ON THE PLANS FROM A SEARCH OF AVAILABLE RECORDS. CONTRACTOR TO VERIFY LOCATIONS AND DEPTHS PRIOR TO CONSTRUCTION.

- KEY NOTES**
- CONSTRUCT PLANTMIX BITUMINOUS SURFACE WITH TYPE II AGGREGATE BASE. (SEE DWGS. C200 TO C205).
  - CONSTRUCT PLANTMIX BITUMINOUS SURFACE. (SEE DWGS. C200 TO C205).
  - CONSTRUCT 3/4" OPEN GRADE. (SEE DWGS. C200 TO C205).
  - CONSTRUCT SIDEWALK DRAIN PER USD #236.
  - CONSTRUCT "L" TYPE CURB AND GUTTER PER USD #216.
  - CONSTRUCT CONCRETE SIDEWALK PER USD #234.
  - CONSTRUCT SIDEWALK RAMP PER USD #235 CASE 1.
  - DETECTABLE WARNING BUTTONS.
  - CONSTRUCT CONCRETE CROSS GUTTER PER USD #228 AND DETAIL 'A' DWG. C238.
  - CONSTRUCT BUS TURN-OUT PER USD #234.1 AND #234.3.
  - CONSTRUCT BUS STOP LOADING PAD PER USD #234.2.
  - CONSTRUCT COMMERCIAL DRIVEWAY OPTION A PER USD #224.
  - CONSTRUCT RESIDENTIAL DRIVEWAY PER USD #223.
  - CONSTRUCT TACK-ON CONCRETE MEDIAN SURFACE PER DETAIL '4' DWG. C205.
  - MILL, APPLY 3/4" OPEN GRADE, MATCH EXISTING PAVEMENT.
  - SAWCUT LINE.
  - PROTECT-IN-PLACE, MILL TO EXISTING EDGE. APPLY 3/4" OPEN GRADE.
  - PROTECT-IN-PLACE.
  - ADJUST EXISTING MANHOLE COVER TO FINISH GRADE PER USD #408.
  - ADJUST EXISTING WATER VALVE BOX COVER TO FINISH GRADE PER UDACS PLATE #8.
  - EXISTING GAS APPURTENANCES TO BE ADJUSTED TO FINISH GRADE BY OTHERS.
  - ADJUST EXISTING BLOW-OFF & RISER ASSEMBLY TO FINISH GRADE PER UDACS PLATE #4 AND DETAIL 'B' DWG. C238.
  - ADJUST EXISTING ELECTRIC MANHOLE TO FINISH GRADE BY NEVADA POWER.
  - ADJUST EXISTING TELEPHONE MANHOLE TO FINISH GRADE BY SPRINT.
  - ADJUST EXISTING CATV PULLBOX TO FINISH GRADE BY COX COMMUNICATIONS.
  - ADJUST WATER TEST STATION TO FINISH GRADE PER DETAIL 'C' DWG. C238.
  - ADJUST COMBINATION AVAR TO FINISH GRADE.
  - ADJUST EXISTING FIRE HYDRANT TO FINISH GRADE PER UDACS PLATE #7.
  - RELOCATE 3" COMBINATION AVAR PER UDACS PLATE #37.
  - RELOCATE WATER TEST STATION PER DETAIL 'C' DWG. C238.
  - CONSTRUCTION/SLOPE EASEMENT AS NOTED.
  - INSTALL DETECTABLE WARNING BUTTONS IN EXISTING RAMP PER USD #235 (4 OF 4).
  - CONSTRUCT NEW SIDEWALK RAMP IN EXISTING SIDEWALK. PER USD #235 CASE 1.
  - CONSTRUCT CONCRETE MEDIAN SURFACE PER USD #218.



DEPARTMENT OF PUBLIC WORKS  
ENGINEERING DESIGN SECTION

CITY ENGINEER: CHARLES KAJKOWSKI, JR., P.E.  
CITY PROJECT ENGINEER: MARVIN STINE, P.E.  
PROJECT MANAGER: ALI ZENHARI, P.E.  
DESIGN BY: LSB  
DRAWN BY: LSB/WHJ

CHECK BY: LSB  
DATE: FEB. 11, 2004

ALEXANDER ROAD/HUALAPAI WAY  
ROAD IMPROVEMENTS PROJECT  
CHEYENNE AVENUE TO DURANGO DRIVE

ALEXANDER ROAD  
PLAN AND PROFILE  
STA 179+00.00 TO STA 188+00.00

ALL RIGHTS RESERVED  
REGISTERED PROFESSIONAL ENGINEER  
STATE OF NEVADA  
NO. 08830  
2/10/04

SHEET: C225  
39 of 124  
DRAWING: 107-V-3584

D:\Drawings\1400\C225-1400 \*2-12-04 04:31pm \*USER: B161648 \*VREFS: 1400-BRR; 1400-TP; 1400-UT; 1400-GR; 1400-CNV; 1400-PRR-LI; 1400-MP; 1400-MPN; 1400-PRF-RT; 1400-STLT