

BASIS OF BEARING
 THE BASIS OF BEARINGS FOR THIS PROJECT IS GRID NORTH AS DEFINED BY THE NEVADA COORDINATE SYSTEM OF 1983 (NCS83), EAST ZONE, (2701), DETERMINED BY GIS CONTROL POINTS. "808" AND "877" AS SHOWN ON A RECORD OF SURVEY ON FILE IN THE CLARK COUNTY RECORDER'S OFFICE, IN FILE 88 OF SURVEYS, AT PAGE 53.

BENCHMARK
 CITY OF LAS VEGAS BENCHMARK NO. 9LV00 7N4 - RIVET AND PLATE IN TOP OF CURB SOUTHEAST CORNER OF ALEXANDER ROAD AND GRAND CANYON DRIVE.
 NAVD 1988 DATUM
 ELEVATION = 792.858 METERS
 2601.24 FEET

CAUTION:
 EXISTING UTILITIES ARE LOCATED ON THE PLANS FROM A SEARCH OF AVAILABLE RECORDS. CONTRACTOR TO VERIFY LOCATIONS AND DEPTHS PRIOR TO CONSTRUCTION.

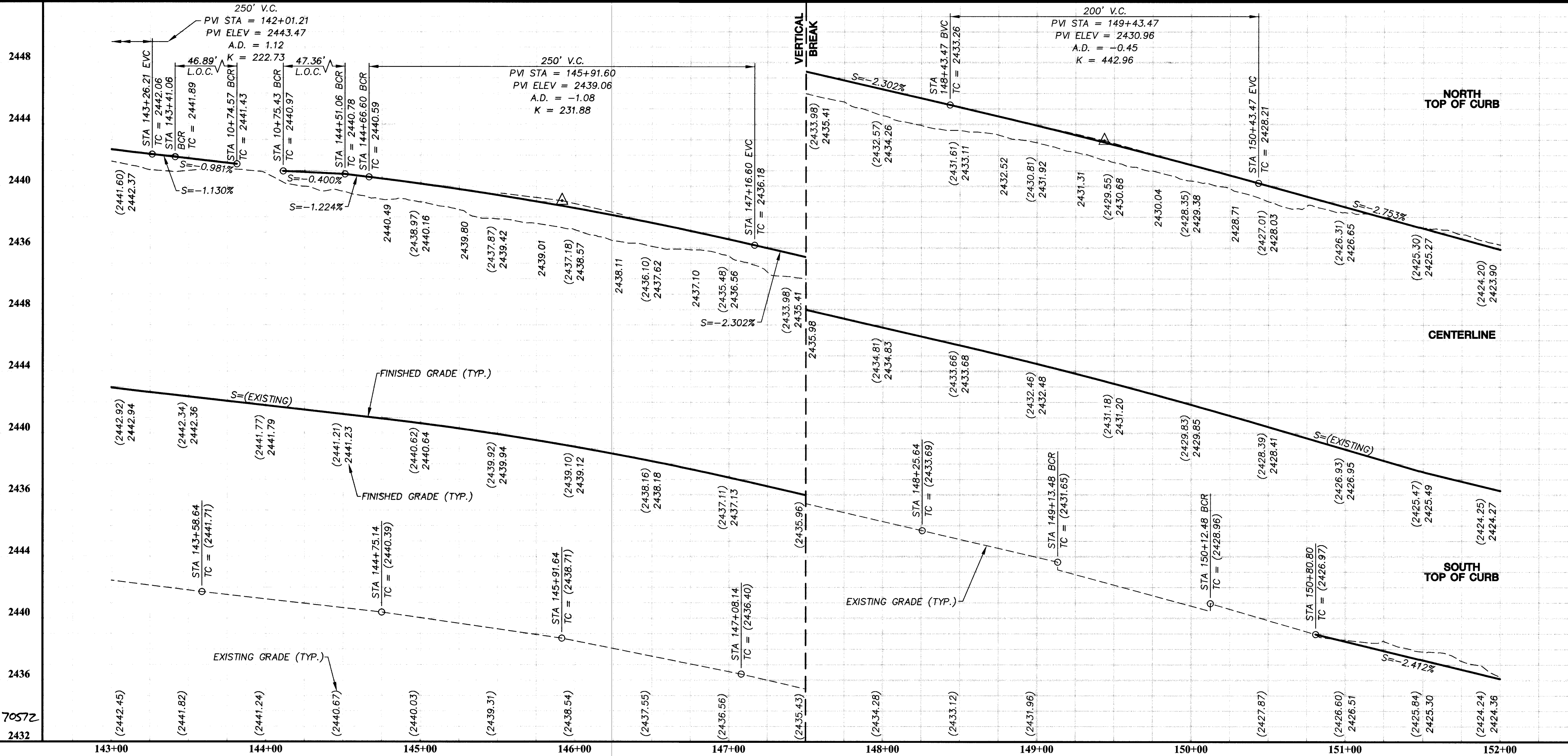
CURVE TABLE THIS SHEET ONLY

CURVE	RADIUS	DELTA	LENGTH	TANGENT
C1	30.00'	89°33'10"	46.89'	29.77'
C2	30.00'	90°26'50"	47.36'	30.24'

Call before you Dig
 1-800-227-2600
 Nevada Power Environment and Safety Services Department

Call before you Overhead
 1-702-593-6111
 Nevada Power Environment and Safety Services Department

REFER TO DWG. C236 FOR INTERSECTION/SIDE STREET GRADING
 Date: 2/1/04



- KEY NOTES**
- CONSTRUCT PLANTMIX BITUMINOUS SURFACE WITH TYPE II AGGREGATE BASE. (SEE DWGS. C200 TO C205).
 - CONSTRUCT PLANTMIX BITUMINOUS SURFACE. (SEE DWGS. C200 TO C205).
 - CONSTRUCT 3/4" OPEN GRADE. (SEE DWGS. C200 TO C205).
 - CONSTRUCT SIDEWALK DRAIN PER USD #236.
 - CONSTRUCT "L" TYPE CURB AND GUTTER PER USD #216.
 - CONSTRUCT CONCRETE SIDEWALK PER USD #234.
 - CONSTRUCT SIDEWALK RAMP PER USD #235 CASE I.
 - DETECTABLE WARNING BUTTONS.
 - CONSTRUCT CONCRETE CROSS GUTTER PER USD #228 AND DETAIL 'A' DWG. C238.
 - CONSTRUCT BUS TURN-OUT PER USD #234.1 AND #234.3.
 - CONSTRUCT BUS STOP LOADING PAD PER USD #234.2.
 - CONSTRUCT COMMERCIAL DRIVEWAY OPTION A PER USD #224.
 - CONSTRUCT RESIDENTIAL DRIVEWAY PER USD #223.
 - CONSTRUCT TACK-ON CONCRETE MEDIAN SURFACE PER DETAIL '4' DWG. C205.
 - MILL, APPLY 3/4" OPEN GRADE, MATCH EXISTING PAVEMENT.
 - SAWCUT LINE.
 - PROTECT-IN-PLACE, MILL TO EXISTING EDGE. APPLY 3/4" OPEN GRADE.
 - PROTECT-IN-PLACE.
 - ADJUST EXISTING MANHOLE COVER TO FINISH GRADE PER USD #408.
 - ADJUST EXISTING WATER VALVE BOX COVER TO FINISH GRADE PER UDACS PLATE #8.
 - EXISTING GAS APPURTENANCES TO BE ADJUSTED TO FINISH GRADE BY OTHERS.
 - ADJUST EXISTING BLOW-OFF & RISER ASSEMBLY TO FINISH GRADE PER UDACS PLATE #4 AND DETAIL 'B' DWG. C238.
 - ADJUST EXISTING ELECTRIC MANHOLE TO FINISH GRADE BY NEVADA POWER.
 - ADJUST EXISTING TELEPHONE MANHOLE TO FINISH GRADE BY SPRINT.
 - ADJUST EXISTING CATV PULLBOX TO FINISH GRADE BY COX COMMUNICATIONS.
 - ADJUST WATER TEST STATION TO FINISH GRADE PER DETAIL 'C' DWG. C238.
 - ADJUST COMBINATION AVAR TO FINISH GRADE.
 - ADJUST EXISTING FIRE HYDRANT TO FINISH GRADE PER UDACS PLATE #7.
 - RELOCATE 3" COMBINATION AVAR PER UDACS PLATE #37.
 - RELOCATE WATER TEST STATION PER DETAIL 'C' DWG. C238.
 - CONSTRUCTION/SLOPE EASEMENT AS NOTED.
 - INSTALL DETECTABLE WARNING BUTTONS IN EXISTING RAMP PER USD #235 (4 OF 4).
 - CONSTRUCT NEW SIDEWALK RAMP IN EXISTING SIDEWALK. PER USD #235 CASE I.
 - CONSTRUCT CONCRETE MEDIAN SURFACE PER USD #218.

DEPARTMENT OF PUBLIC WORKS
 ENGINEERING DESIGN SECTION

ALEXANDER ROAD/HUALAPAI WAY
 ROAD IMPROVEMENTS PROJECT
 CHEYENNE AVENUE TO DURANGO DRIVE

ALEXANDER ROAD
 PLAN AND PROFILE
 STA 143+00.00 TO STA 152+00.00

DATE: FEB. 11, 2004
 CHECK BY: LSB
 DESIGN BY: LSB
 DRAWN BY: LSB/WHJ

CIVIL ENGINEER
 AU. R. ZENHARI
 No. 08830

SHEET: C221
 35 of 124
 DRAWING: 107-V-3594