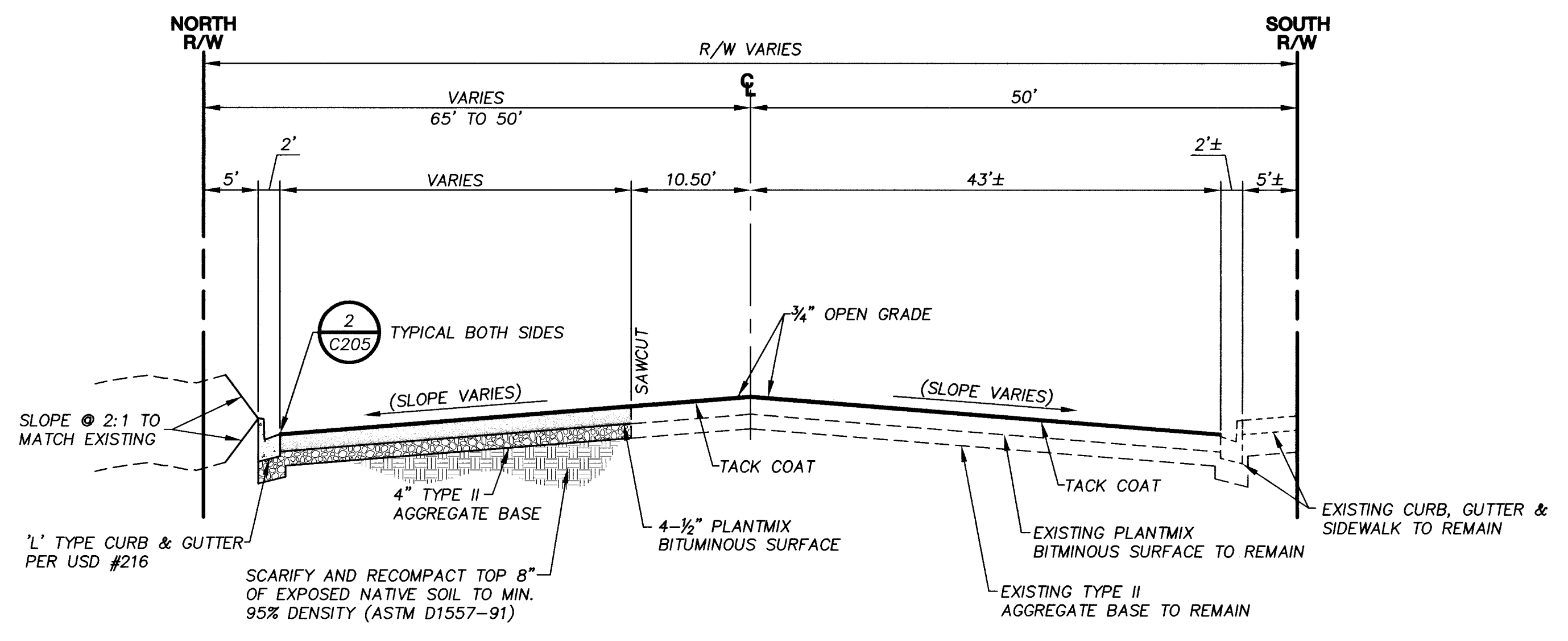
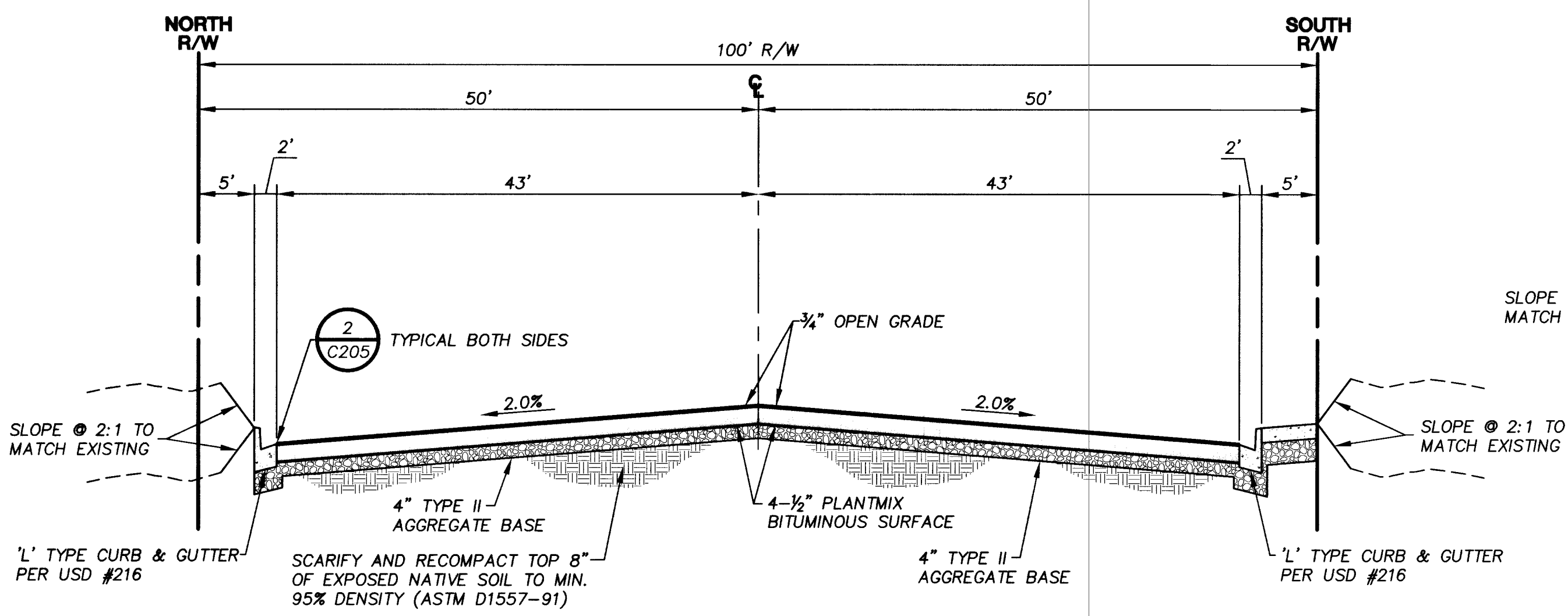


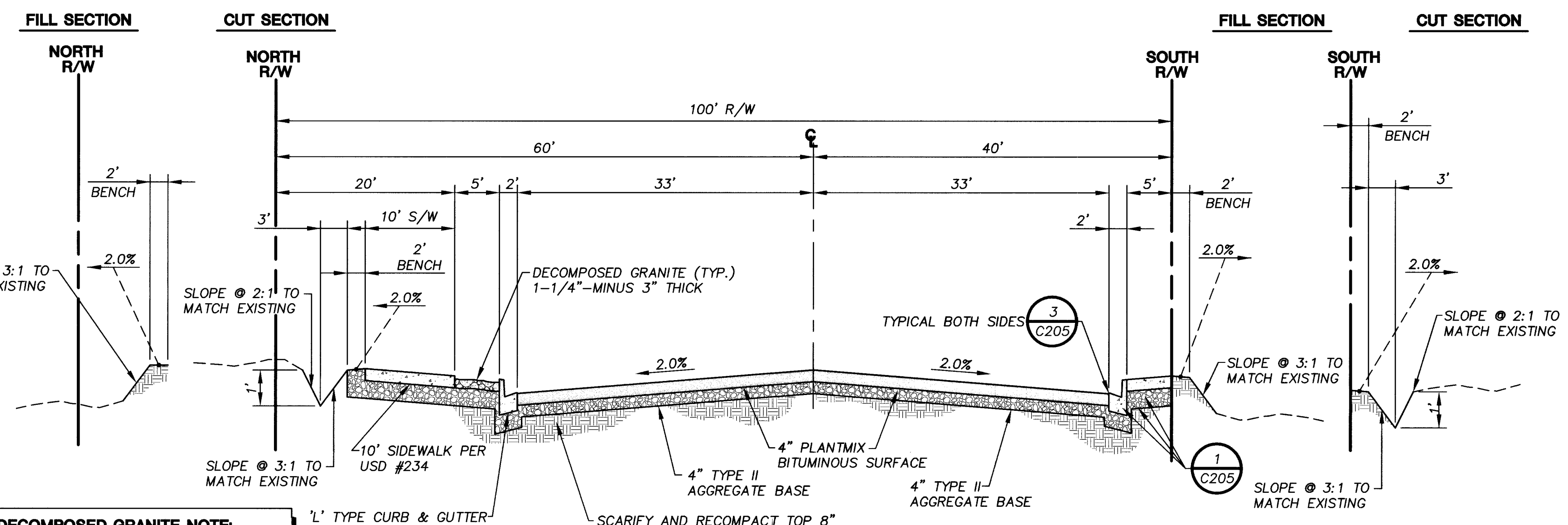
ALEXANDER ROAD
 STA 147+34.17 TO STA 150+80.15
 STA 152+51.21 TO STA 158+37.00



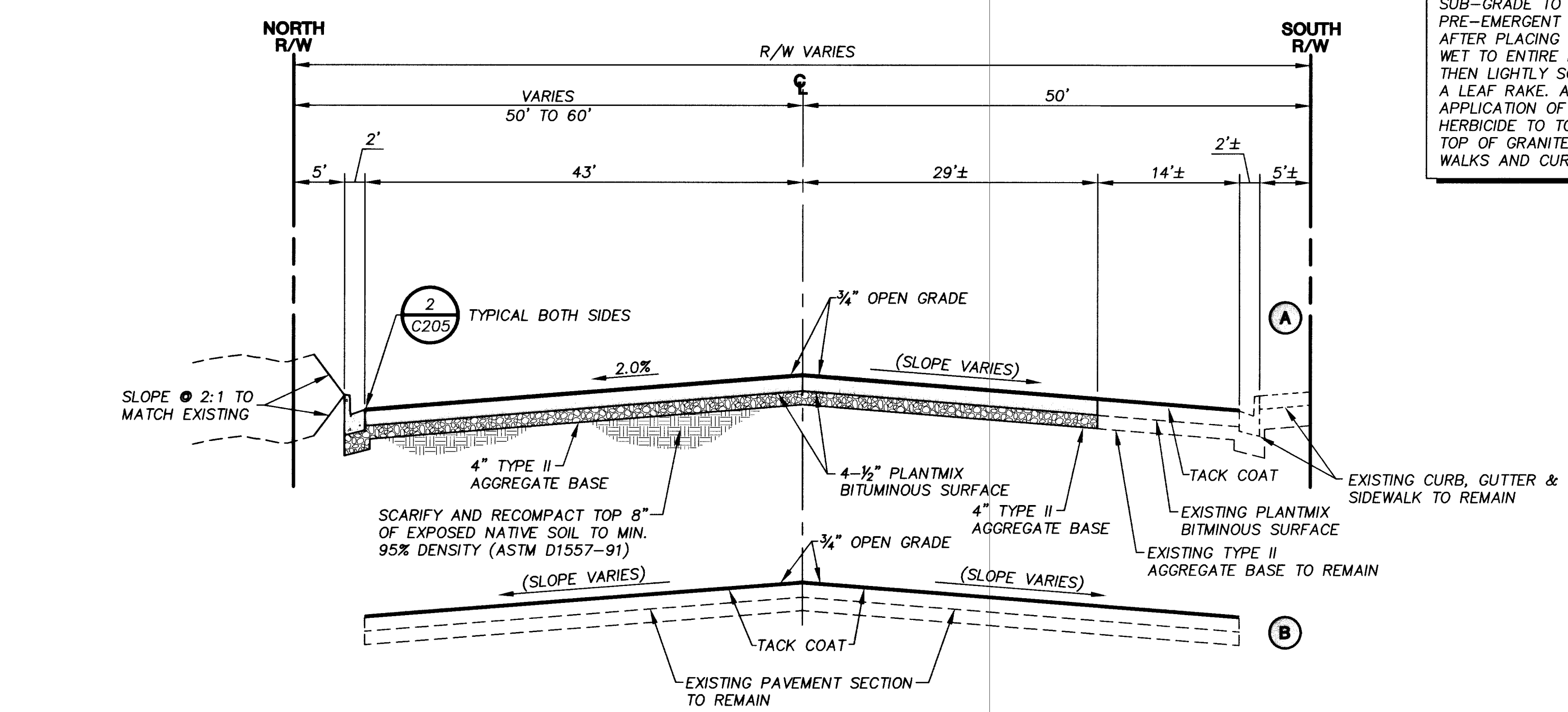
ALEXANDER ROAD
 STA 165+23.55 TO STA 174+64.89



ALEXANDER ROAD
 STA 150+80.15 TO STA 152+51.21

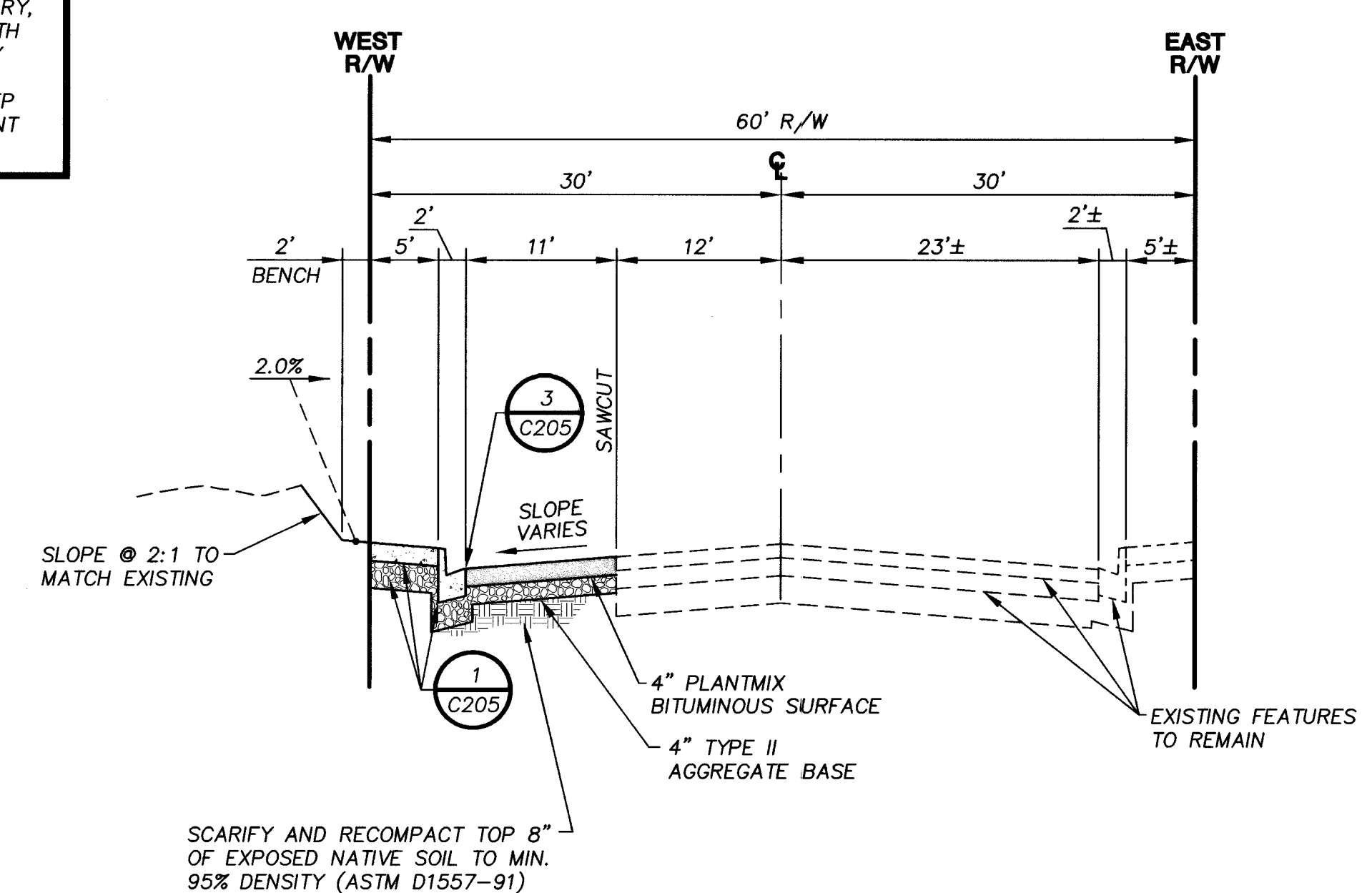


ALEXANDER ROAD
 STA 20+56.97 TO STA 29+26.20



ALEXANDER ROAD
 (A) STA 158+37.00 TO STA 163+61.52
 (B) STA 163+61.52 TO STA 165+23.55

DECOMPOSED GRANITE NOTE:
 SIZE: 1-1/4" MINUS, 65% AGGREGATE, 35% FINE 3" THICK.
 COLOR: REBEL RED
 BEFORE PLACING GRANITE, COMPACT SUB-GRADE TO 85% AND APPLY A PRE-EMERGENT HERBICIDE TO SOIL. AFTER PLACING GRANITE: RAKE SMOOTH, WET TO ENTIRE DEPTH, ALLOW TO DRY, THEN LIGHTLY SCARIFY SURFACE WITH A LEAF RAKE. APPLY A SECONDARY APPLICATION OF PRE-EMERGENT HERBICIDE TO TOP OF GRANITE. KEEP TOP OF GRANITE 1" BELOW ADJACENT WALKS AND CURBS.



CAMPBELL ROAD
 STA 6+56.17 TO STA 9+26.04

DEPARTMENT OF PUBLIC WORKS
ENGINEERING DESIGN SECTION
 CITY ENGINEER: CHARLES K. KOWSKI, JR., P.E.
 CITY PROJECT ENGINEER: MARVIN STINE, P.E.
 PROJECT MANAGER: ALI ZENHARI, P.E.
 DESIGN BY: LSB
 CHECK BY: LSB
 DATE: FEB. 11, 2004
 DRAWN BY: LSB/WHJ

ALEXANDER ROAD/HUALAPAI WAY
ROAD IMPROVEMENTS PROJECT
CHEYENNE AVENUE TO DURANGO DRIVE
 TYPICAL PAVEMENT SECTIONS

PROFESSIONAL ENGINEER
 ALI R. ZENHARI
 No. 08930
 CIVIL
 STATE OF NEVADA
 SHEET: 2/16/04
 SHEET: C204
 18 OF 124
 DRAWING# 107-V-3694

Call before you Dig
 1-800-227-2600
 Nevada Power, Environment and Safety Services Department

Call before you Overhead
 1-702-593-6111
 Nevada Power, Environment and Safety Services Department

C:\Users\14001\C202-205-1400-44-13-04_01:35pm USER: jll1648 XREFS: 1400-BR
 70555