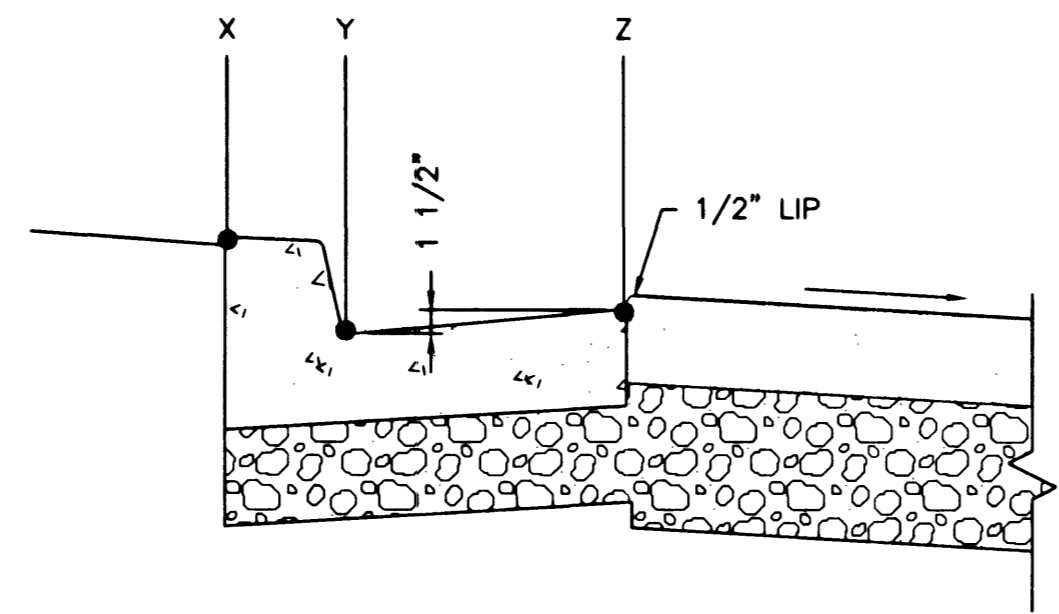
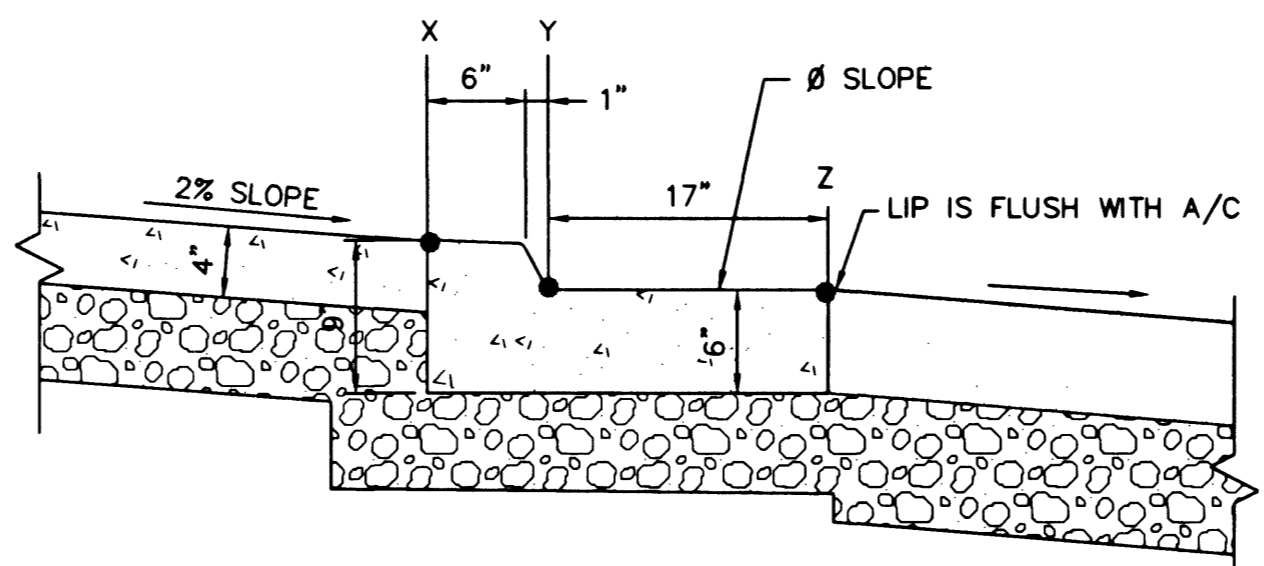


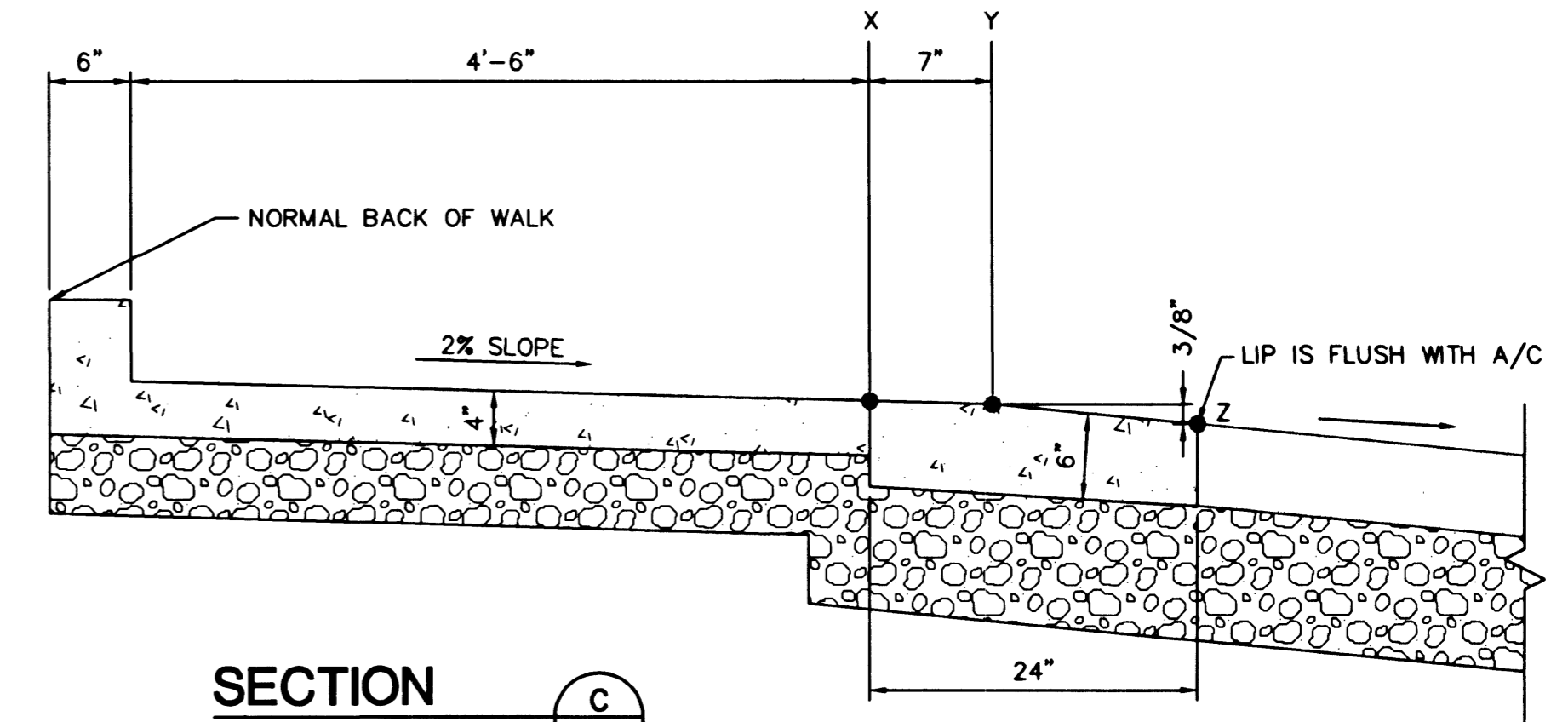
McWILLIAMS AVE		1	2	3	4	5	6
RAMP @ STA 9+66.99 RT	ELEV. X	2032.80	2032.55	2032.30	2032.33	2032.61	2032.88
	ELEV. Y	2032.30	2032.29	2032.29	2032.32	2032.35	2032.38
	ELEV. Z	2032.42	2032.29	2032.26	2032.29	2032.35	2032.50
RAMP @ STA 9+67.01 LT	ELEV. X	2032.86	2032.60	2032.33	2032.30	2032.55	2032.80
	ELEV. Y	2032.36	2032.34	2032.32	2032.29	2032.29	2032.30
	ELEV. Z	2032.48	2032.34	2032.29	2032.26	2032.29	2032.42



SECTION A
SCALE: NONE



SECTION B
SCALE: NONE



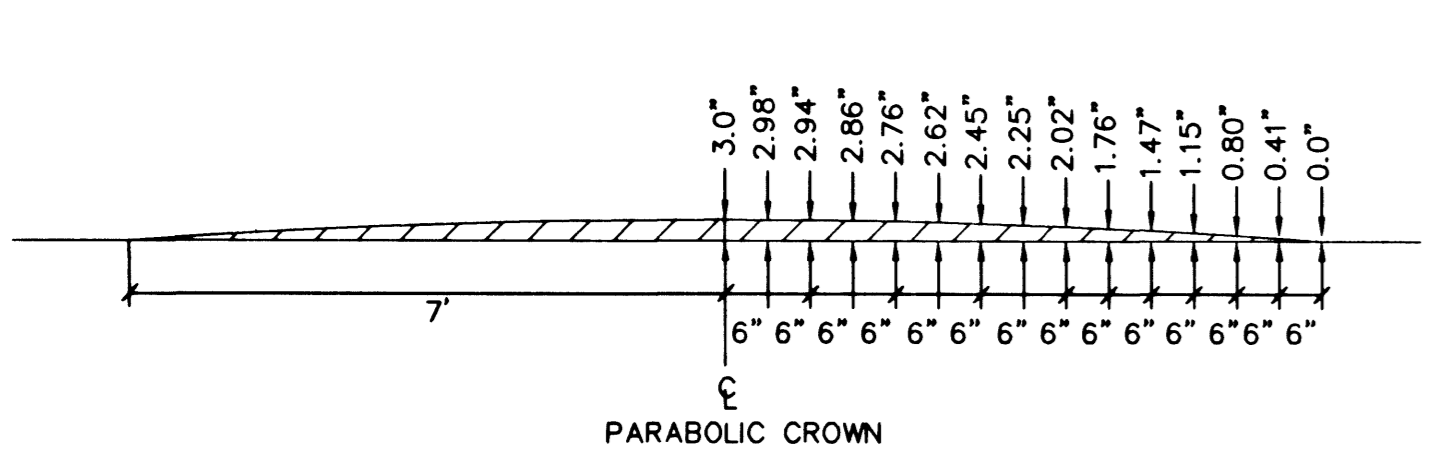
SECTION C
SCALE: NONE

NOTE: SEE SIDEWALK RAMP CCUSD DWG NO. 235 CASE I

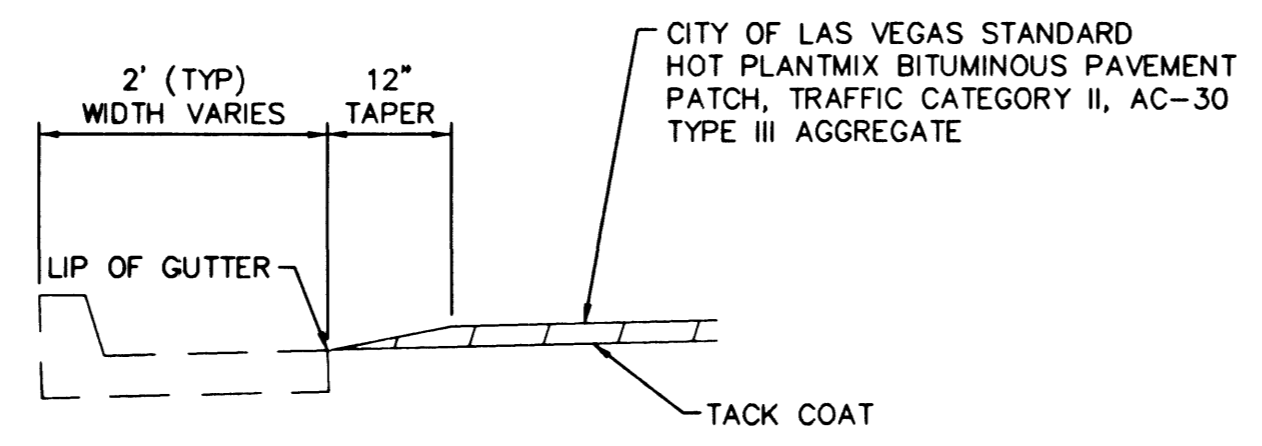
NOTE: SEE SIDEWALK RAMP CCUSD DWG NO. 235 CASE I

SPILL TYPE CURB AND GUTTER DETAIL 1
SCALE: NONE

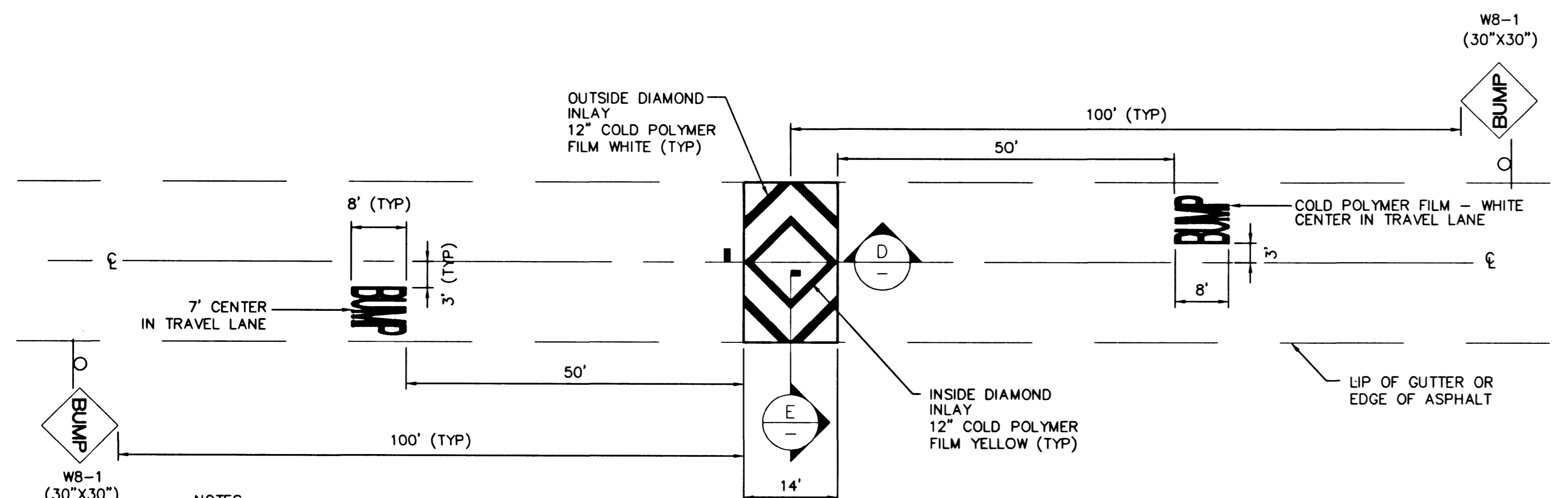
NOTE: SEE "L" TYPE CURB AND GUTTER CCUSD DWG NO. 216



SECTION D
SCALE: NONE

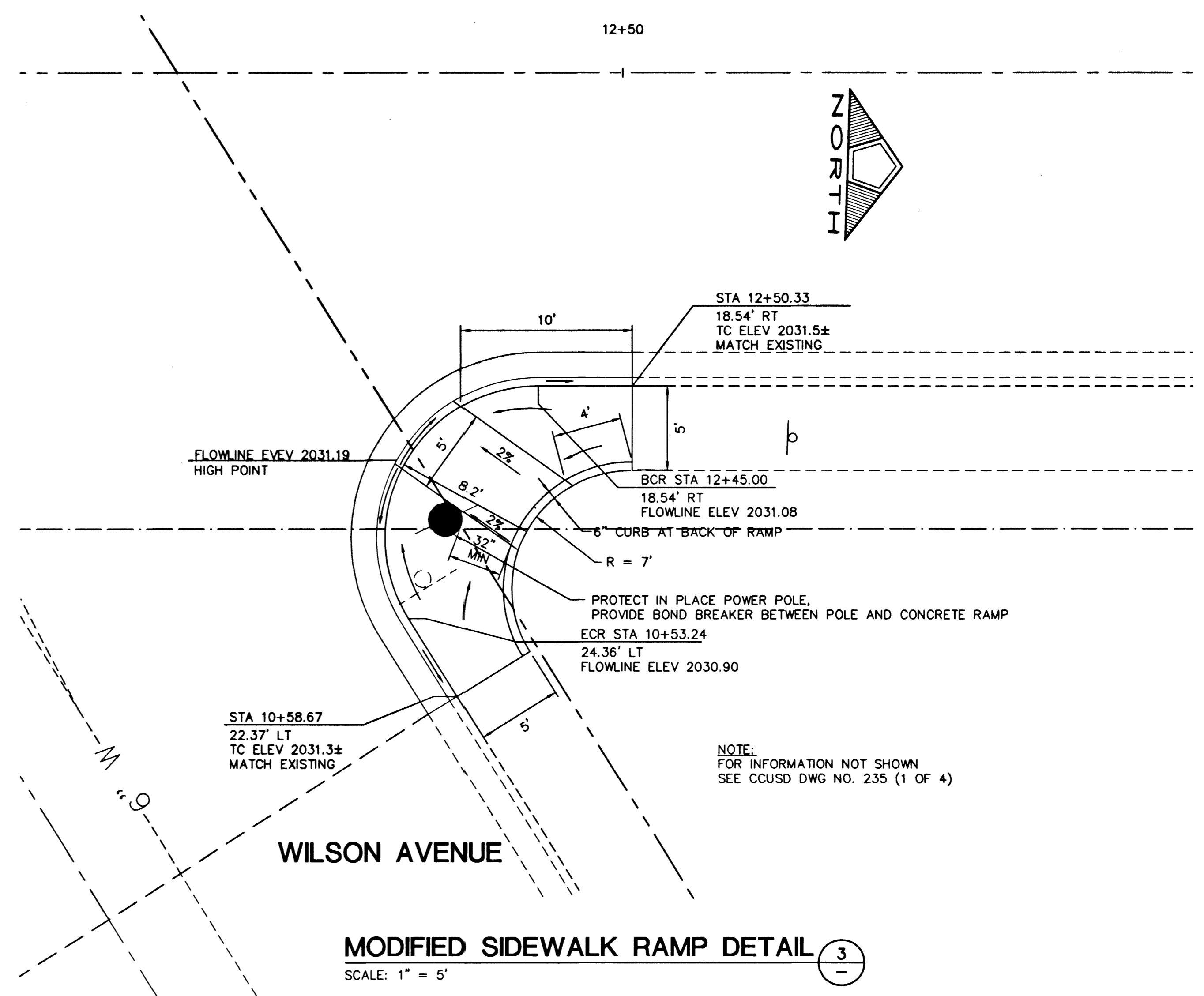


SECTION E
SCALE: NONE



SPEED HUMP DETAIL 2
SCALE: NONE

NOTES:
SIGN LOCATION TO BE DETERMINED BY CITY OF LAS VEGAS TRAFFIC ENGINEER



MODIFIED SIDEWALK RAMP DETAIL 3
SCALE: 1" = 5'

REVISIONS	NO.	DATE	DESCRIPTION

DEPARTMENT OF PUBLIC WORKS
ENGINEERING DESIGN SECTION

CITY ENGINEER: CHARLES KAJKOWSKI JR., P.E.
PROJECT ENGINEER: JERRY L. TURNER P.E.
DESIGNED BY: HORIZONTAL SCALE: AS SHOWN
DRAWN BY: VERTICAL SCALE: NONE
CHECKED BY: DATE: 11/08/01

TITLE: F STREET RECONSTRUCTION
BONANZA ROAD TO WASHINGTON AVE
ROADWAY DETAILS

PROFESSIONAL ENGINEER - STATE OF NEVADA
JON P. [Signature]
No. 14888
2-19-02

Sheet **9** of 16
DRAWING NO. 107-V3492