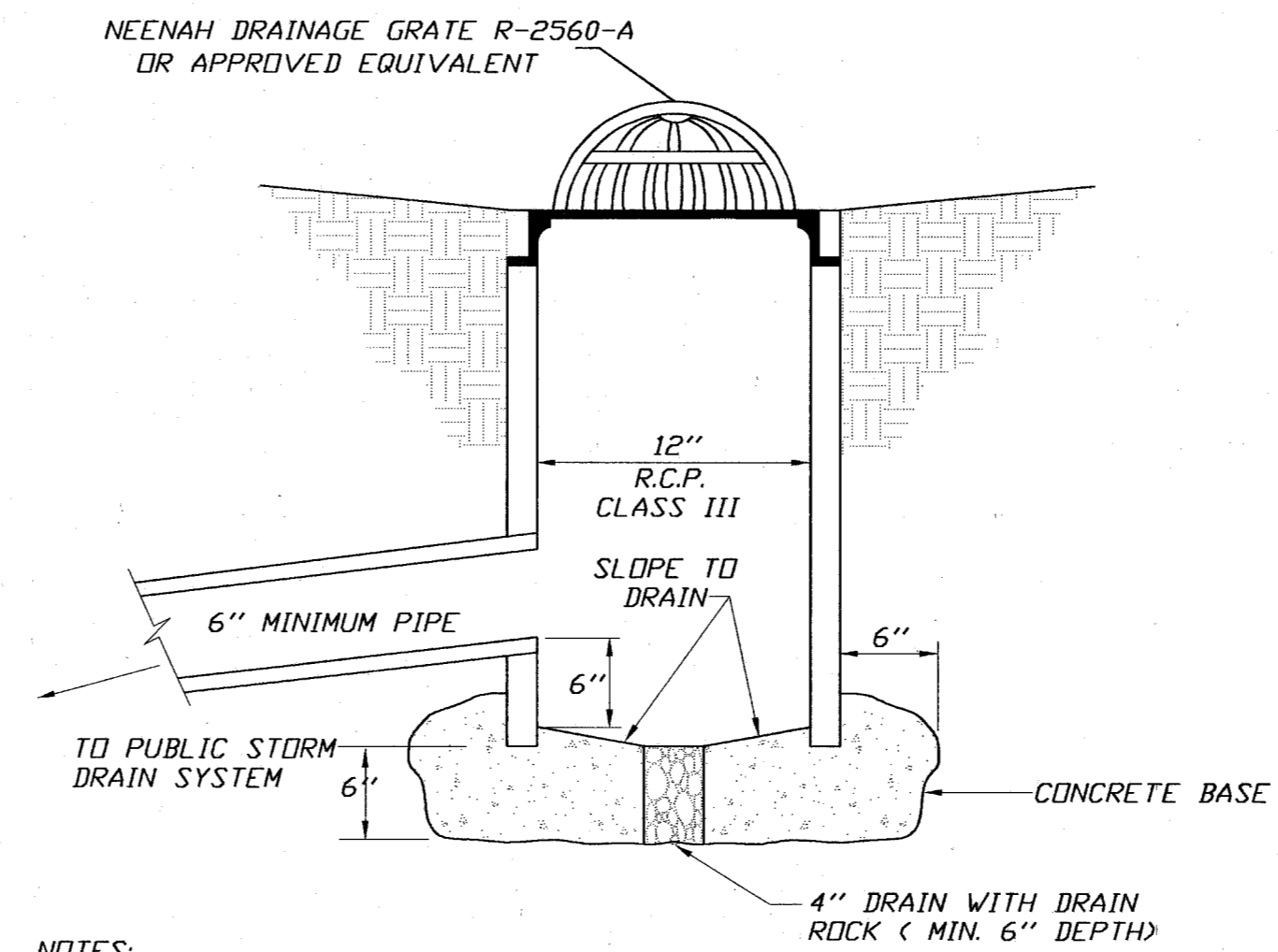
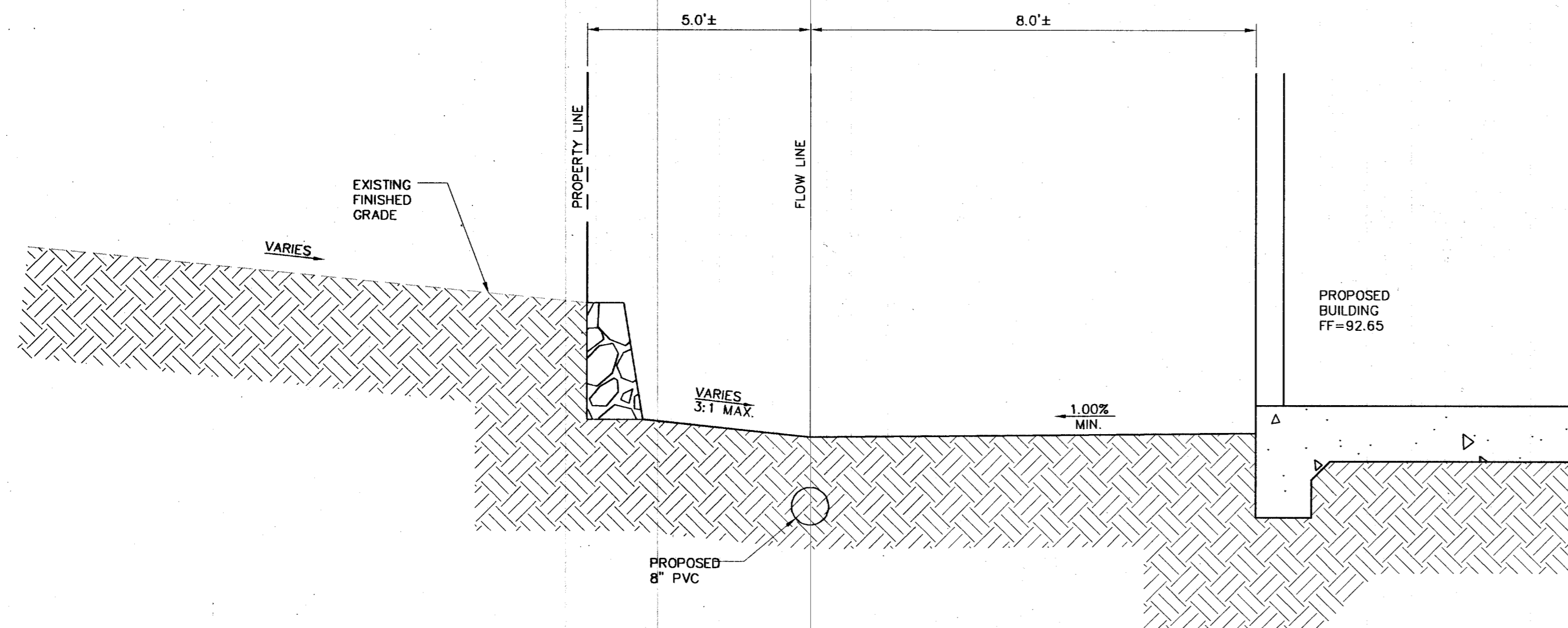


1 TYPICAL SECTION
NO SCALE

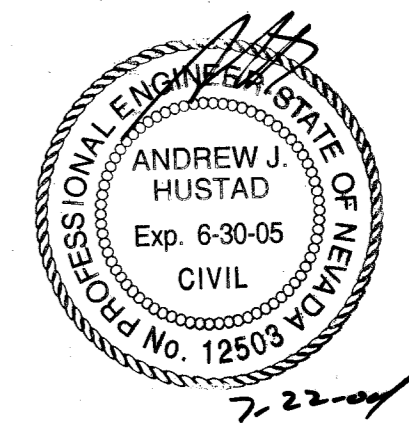


- NOTES:
1. PORTLAND CEMENT CONCRETE (P.C.C.) SHALL HAVE THE FOLLOWING CHARACTERISTICS: 3000 PSI MIN. COMPRESSIVE STRENGTH AT 28 DAYS, MIN. 6 SACKS OF CEMENT PER CUBIC YARD WITH SLUMP AT 1 TO 4 INCHES. ALL MATERIAL SHALL CONFORM TO SSPWC, SECTION 202.
 2. TO BE OWNED AND MAINTAINED BY PRIVATE DEVELOPMENTS ONLY. NOT TO BE USED IN DRIVEWAYS OR WHERE DRAINAGE ORIGINATES FROM AREAS USED FOR VEHICULAR TRAFFIC.

YARD DRAIN
NOT TO SCALE



2 CROSS SECTION
NO SCALE



REV.	DATE	DESCRIPTION	BY	APP'D

SCALE: N/A
HORIZ: 1"=20'
VERT: 1"=20'
JOB NO: 72771
F:\DWG\SCORE\HILLS\HILLS-DETAIL.DWG