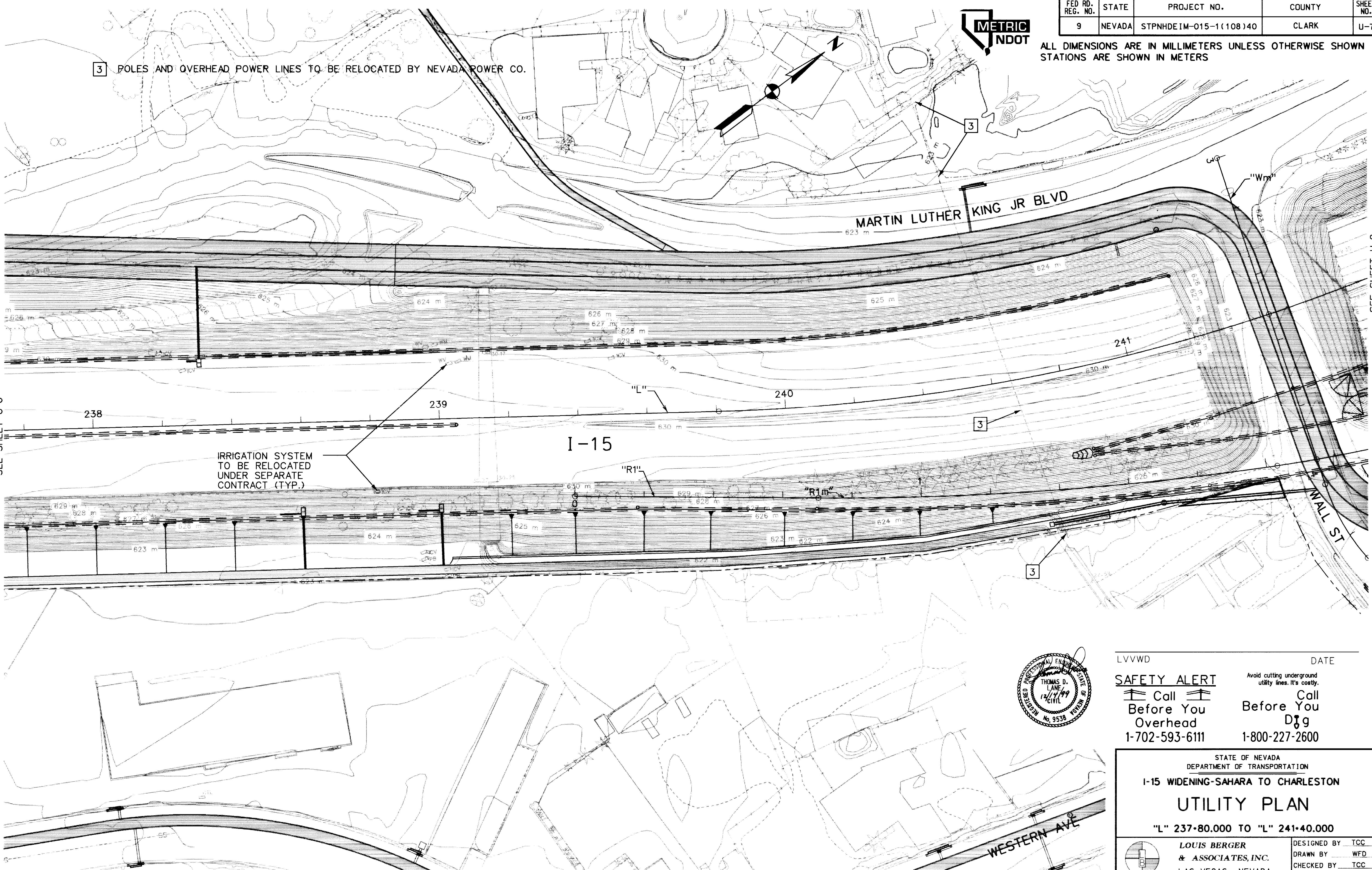


FED RD. REG. NO.	STATE	PROJECT NO.	COUNTY	SHEET NO.
9	NEVADA	STPNHDEIM-015-1(108)40	CLARK	U-7



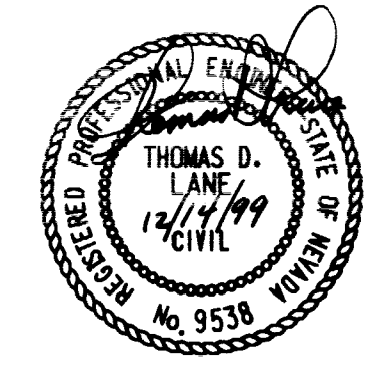
ALL DIMENSIONS ARE IN MILLIMETERS UNLESS OTHERWISE SHOWN  
STATIONS ARE SHOWN IN METERS

3 POLES AND OVERHEAD POWER LINES TO BE RELOCATED BY NEVADA POWER CO.



SEE SHEET U-6

SEE SHEET U-8



LVVWD DATE  
**SAFETY ALERT**  
 Call Before You Dig  
 1-702-593-6111  
 Avoid cutting underground utility lines. It's costly.  
 Call Before You Dig  
 1-800-227-2600

STATE OF NEVADA  
 DEPARTMENT OF TRANSPORTATION  
**I-15 WIDENING-SAHARA TO CHARLESTON**  
**UTILITY PLAN**  
 "L" 237+80.000 TO "L" 241+40.000

LOUIS BERGER & ASSOCIATES, INC. LAS VEGAS, NEVADA	DESIGNED BY ICC DRAWN BY WFD CHECKED BY ICC REVIEWED BY TDL
---------------------------------------------------------	----------------------------------------------------------------------

20917

07-V 3207