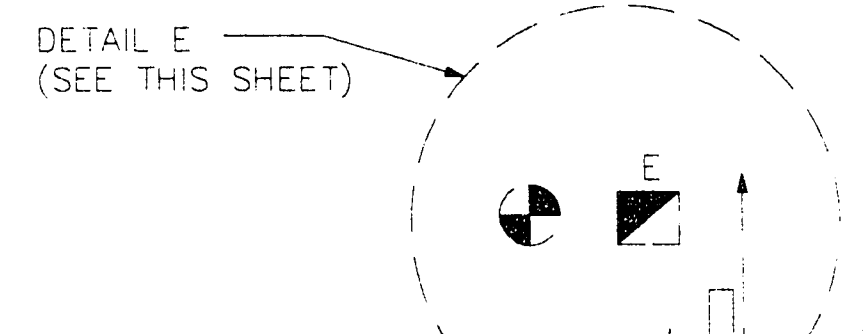
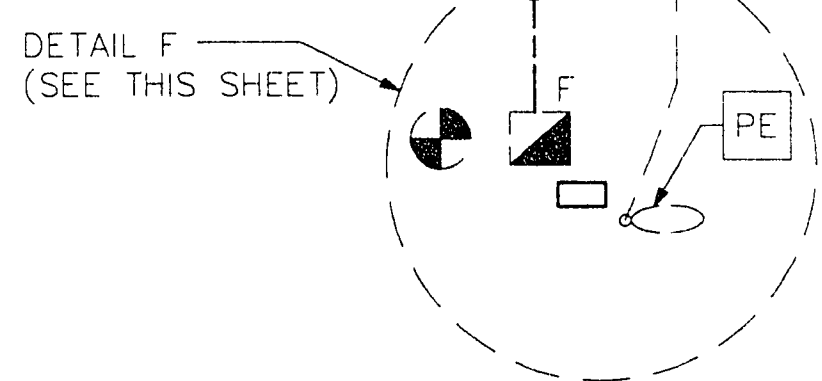


DETAIL 'E'
NTS



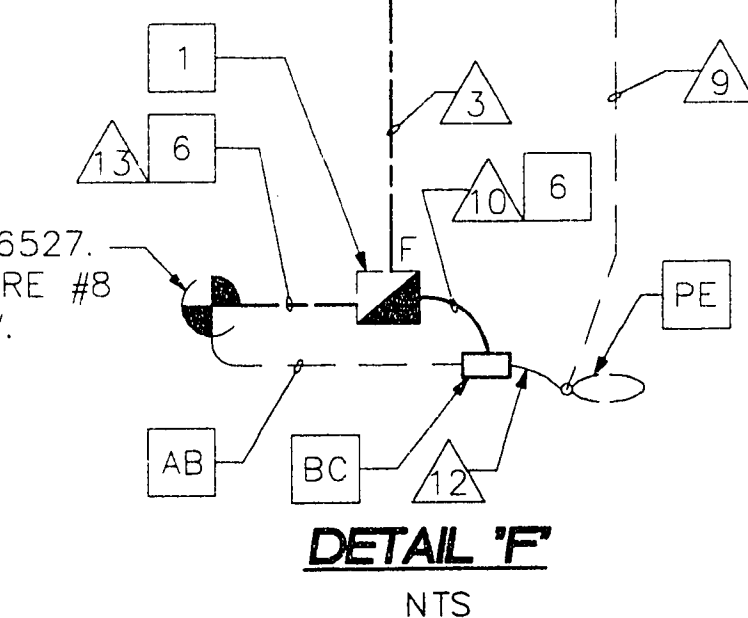
TO EXISTING FIXTURES ON 3RD ST (10 TOTAL).
MAINTAIN AND PROTECT IN PLACE.



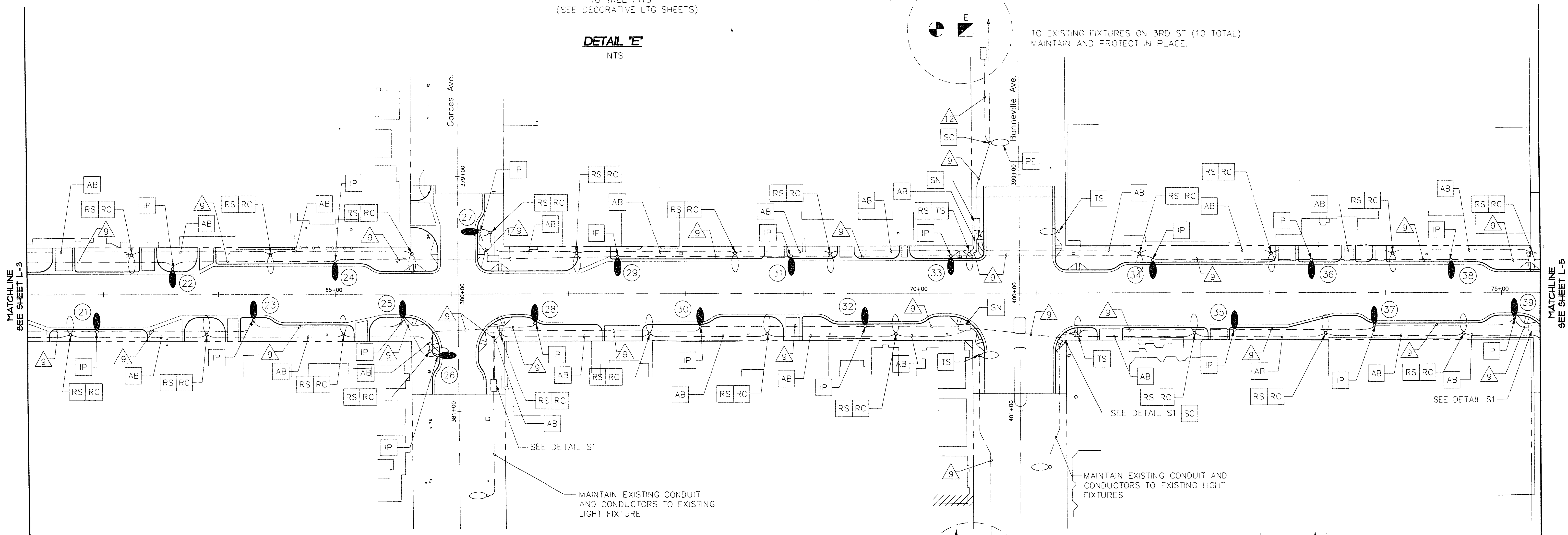
TO TREE PIT
(SEE DECORATIVE
LTG SHEETS)

TO EXISTING STREET LIGHT PB AT SE
CORNER OF BONNEVILLE AVE AND 4TH ST

EXISTING POWER POLE #P76527.
EXISTING SERVICE ENCLOSURE #8
TO BE ABANDONED BY CLV.



DETAIL 'F'
NTS



CONDUCTOR TYPE	FUNCTION	CONDUCTOR SCHEDULE													
		1	2	3	4	5	6	7	8	9	10	11	12	13	14
#8 AWG	GROUND (GREEN)	1	1	1	1	1	1	1	1	1	1	1	1	1	1
#2 AWG	TREE PIT LIGHTING ELECTRICAL SERVICE	2	1	2	2	1	1	1							
PULL ROPE	FUTURE DECORATIVE LIGHTING CONDUCTORS			1	1	1									
#4 AWG	IRRIGATION CONTROLLER ELECTRICAL SERVICE		2												
#6 AWG	TREE PIT LIGHTING ELECTRICAL SERVICE						2								
#4 AWG	STREET LIGHT ELECTRICAL SERVICE									2	2	2	2		
#10 AWG	PHOTO-ELECTRIC UNIT										3	3			
PULL ROPE	FUTURE CONDUCTORS											1			1
#3/0 AWG	ELECTRICAL SERVICE POINT CONNECTION												3		
	CONDUIT SIZE	1 1/4"	2"	1 1/4"	1 1/4"	2" (E)	2" (E)	1 1/4"	2" (E)	3/4"	1"	2" (E)	2" (E)	2" (E)	2"

(E) EXISTING

Call before you Dig.
1-800-227-2600

NO.	REVISIONS	DATE	BY

James Brantley
8/31/95

Kimley-Horn and Associates, Inc.
Las Vegas, Nevada © 1995

DESIGNED BY JJO
DRAWN BY PPG
CHECKED BY JTC
NOTE BOOK NO.



DOWNTOWN CORRIDOR IMPROVEMENTS
CITY OF LAS VEGAS DEPT. OF PUBLIC WORKS
LAS VEGAS, NEVADA
CONTRACT 3 - 4TH STREET
CHARLESTON BLVD. TO STEWART AVE.

DATE 8/30/95
SCALE 1" = 40'

STREET LIGHTING
STA. 62+35 TO STA. 75+35

DWG. NO. 107-V-2288A
FILE NO. 9903.02
SHEET L-4
SHEET 40 OF 49

80-3-39