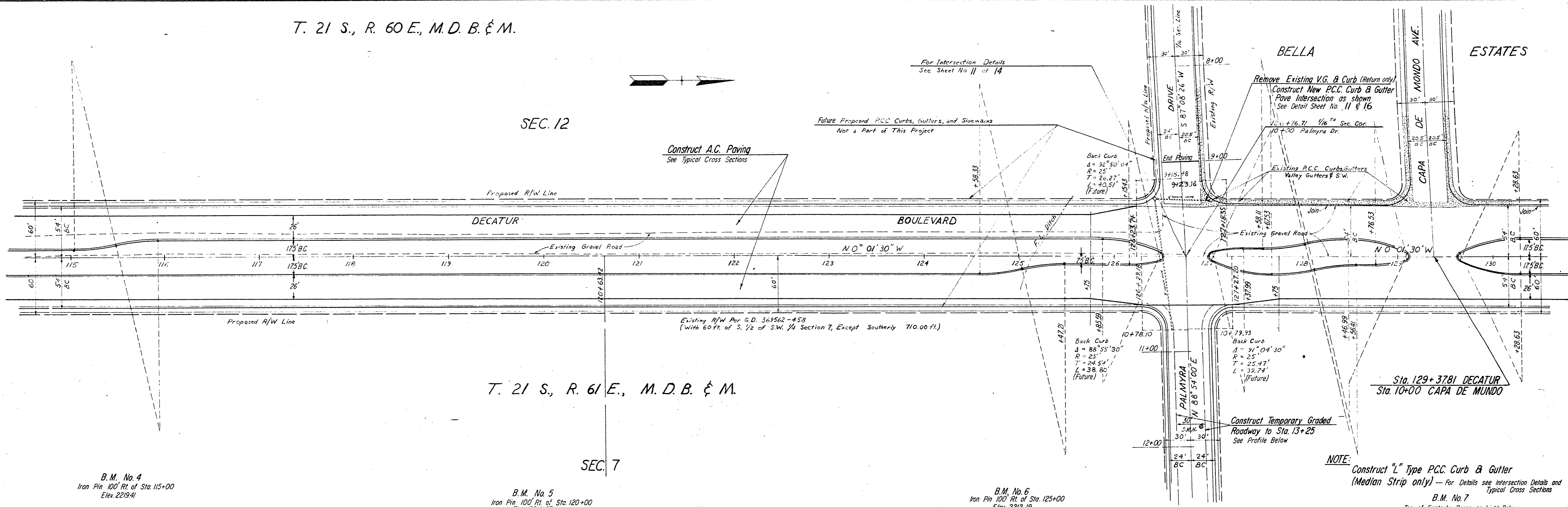


T. 21 S., R. 60 E., M. D. B. & M.

SEC. 12

T. 21 S., R. 61 E., M. D. B. & M.

SEC. 7



B.M. No. 4  
Iron Pin 100' Rt. of Sta. 115+00  
Elev. 2219.41

B.M. No. 5  
Iron Pin 100' Rt. of Sta. 120+00  
Elev. 2214.07

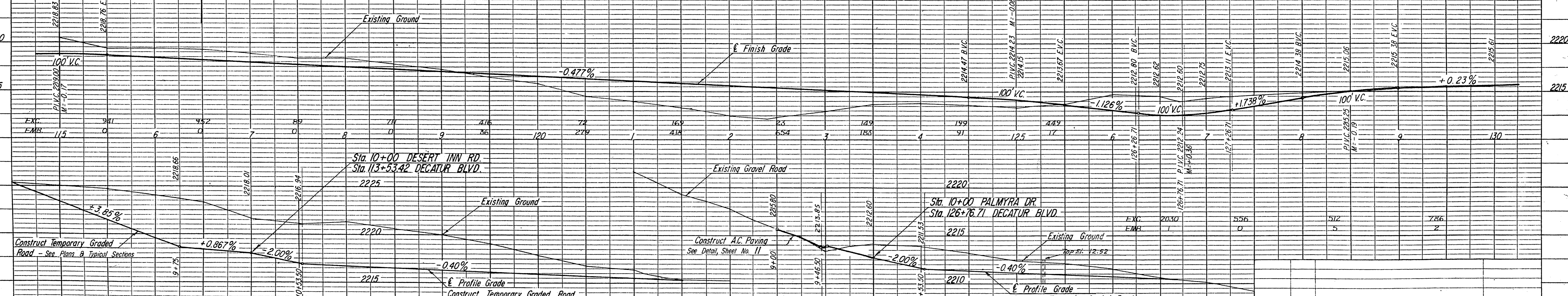
B.M. No. 6  
Iron Pin 100' Rt. of Sta. 125+00  
Elev. 2212.19

B.M. No. 7  
Top of Easterly Brace on Light Pole  
55' Lt. of Sta. 129+90  
Elev. 2216.18

NOTE: Construct "L" Type P.C.C. Curb & Gutter (Median Strip only) - For Details see Intersection Details and Typical Cross Sections

Warped Section; For Finish Grade see Detail Sheet No. 10

Warped Section; For Finish Grade see Detail Sheet No. 11



DESERT INN ROAD  
PROFILE  
See Sheets No. 3, 8, 10

PALMYRA DRIVE  
PROFILE  
See Sheets No. 4, 8, 11

REV. NO. DATE REVISION APPROVED

CLARK COUNTY NEVADA  
COUNTY ENGINEERING DEPARTMENT

DECATUR BLVD.  
SPRING MOUNTAIN RD. TO SAHARA AVE.  
PLAN & PROFILE

DESIGN: G.A.G. 4/66 APPROVED: DATE: SCALE: 1"=50' HOR.  
DRAWN: G.A.G. CHECKED: COUNTY ENGINEER 1"=5' VERT.  
RECOMM: SHEET 4 OF 16  
DWG. NO. L-629

20496 107-V-879  
Roll File 2-64

DATE  
BY  
SURVEYED  
PLAN  
NOTE BOOK  
ALIGNMENT CHECKED  
RT. OF WAY CHECKED

DATE  
BY  
SURVEYED  
PROFILE  
NOTE BOOK  
GRADES CHECKED  
B.M.'S NOTED  
STRUCTURE ROTATIONS CHECKED