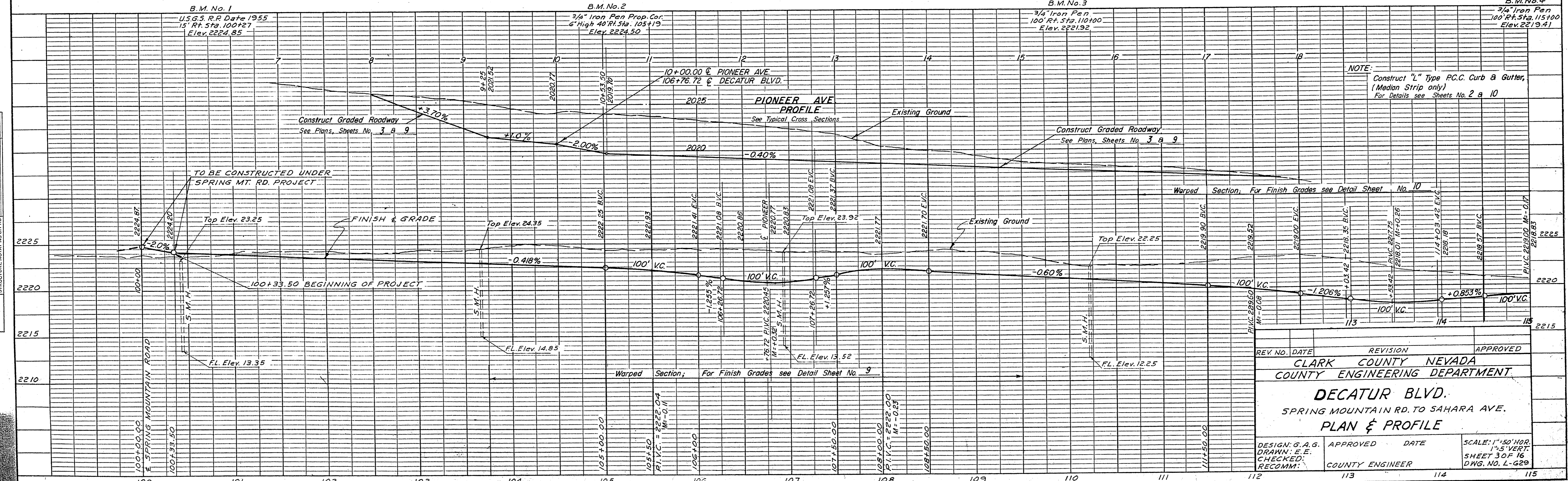
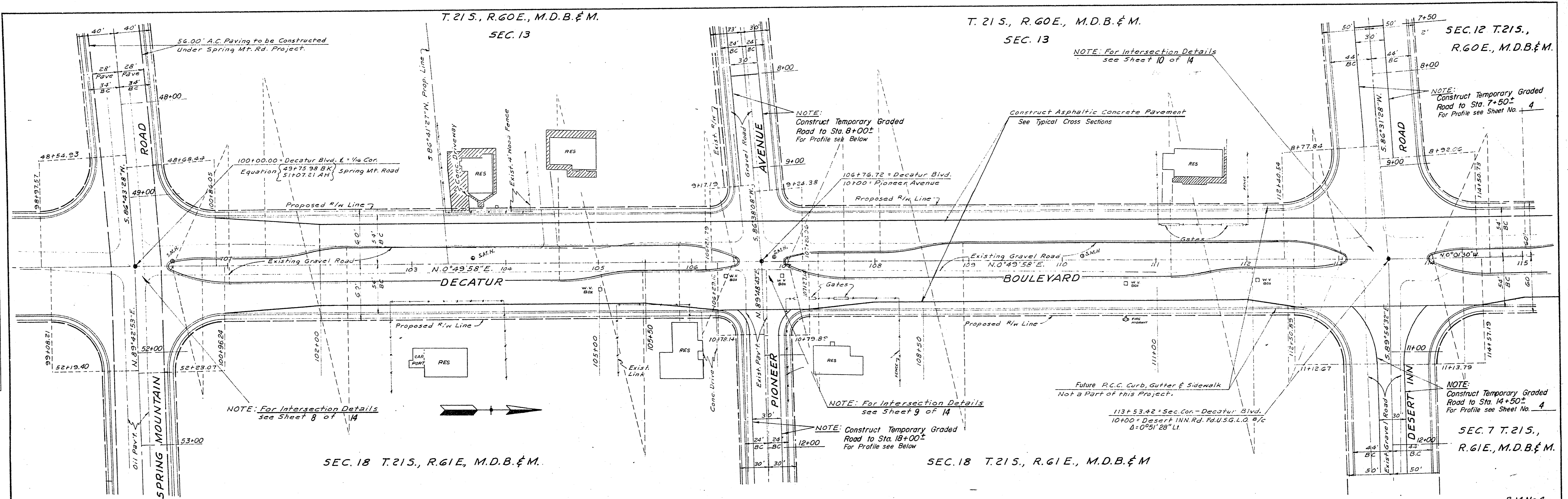


PLAN
 SURVEYED, PLOTTED, CHECKED, NO. OF WAY CHECKED.
 DATE

PROFILE
 SURVEYED, PLOTTED, CHECKED, GRADES CHECKED, STRUCTURE NOTATIONS CHKD.
 DATE



REV. NO.	DATE	REVISION	APPROVED

CLARK COUNTY NEVADA
 COUNTY ENGINEERING DEPARTMENT

DECATUR BLVD.
 SPRING MOUNTAIN RD. TO SAHARA AVE.
 PLAN & PROFILE

DESIGN: G. A. G.	APPROVED	DATE	SCALE: 1"=50' HOR. 1"=5' VERT.
DRAWN: E. E.	COUNTY ENGINEER		SHEET 3 OF 16
CHECKED:			DWG. NO. L-G29
RECOMM:			

EXCAVATION	672	362	745	1072	1276	1417	4333	1361	1844	1250	1336	1747	2091	4891	1436
EMBANKMENT	11	0	0	0	0	0	0	0	0	0	0	0	0	0	0

PLATE 1, PLAN KEUFFEL

48 7012, IMPERIAL™ TRACING CLOTH 25002

Roll File 26A
 107 V 879