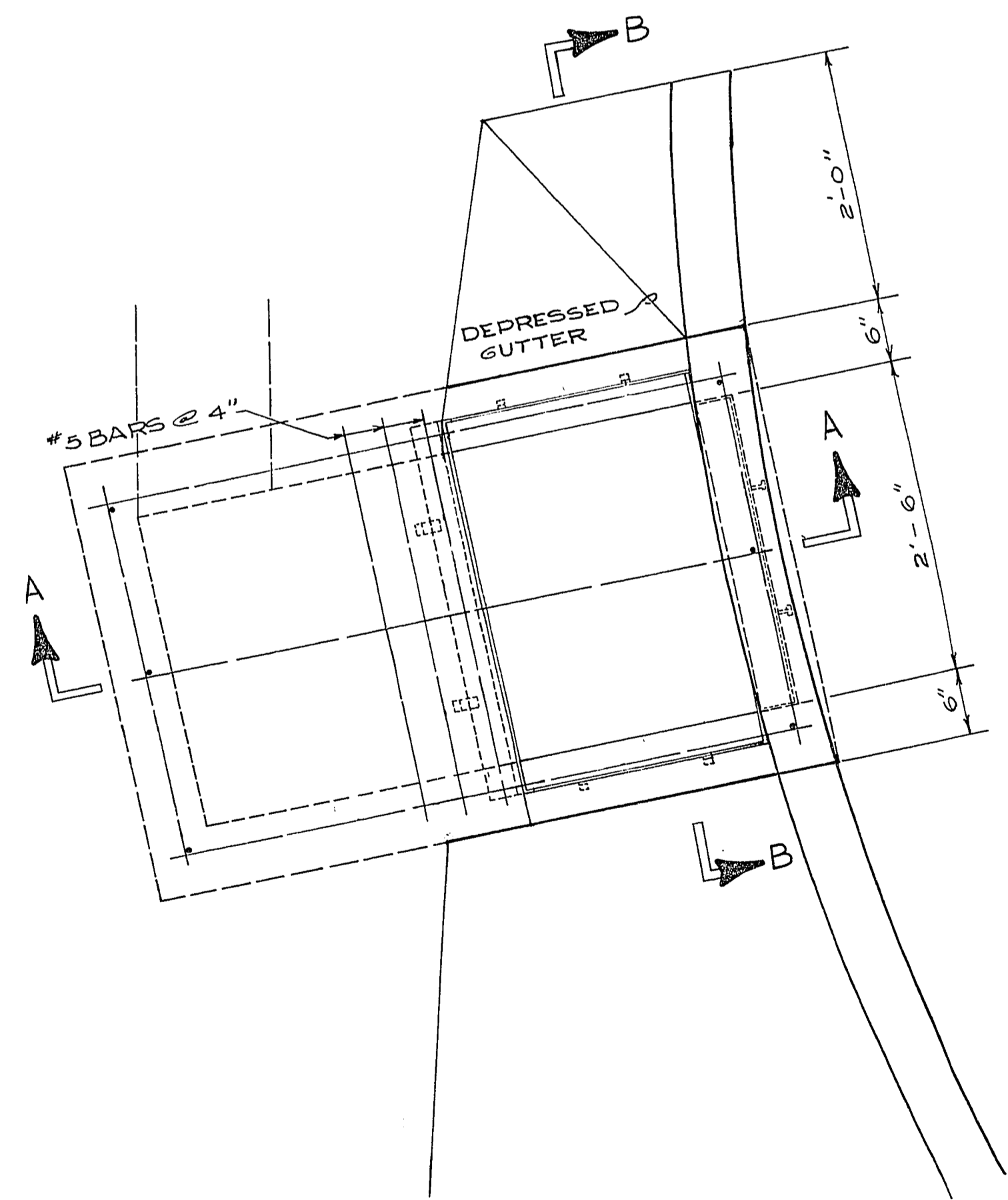
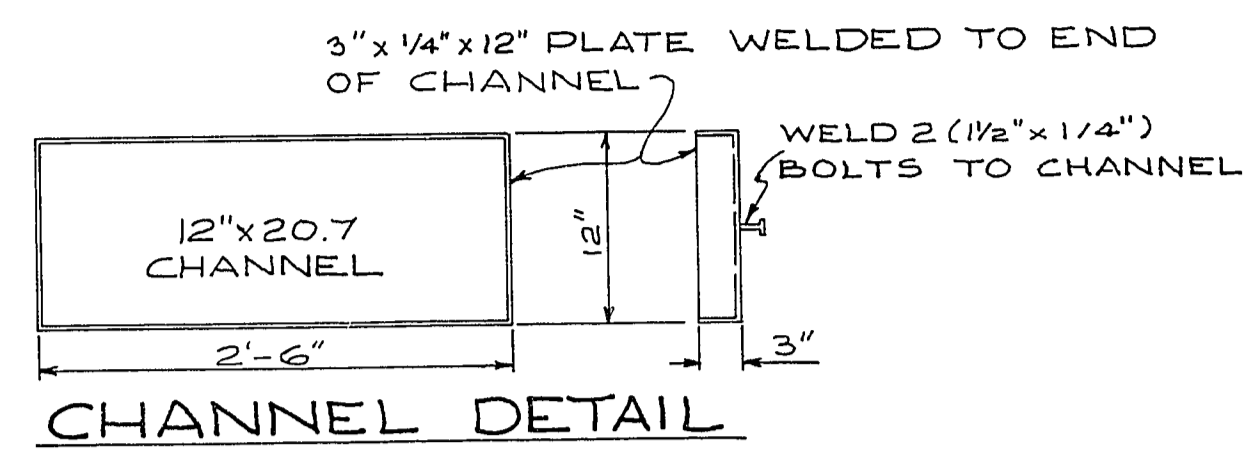


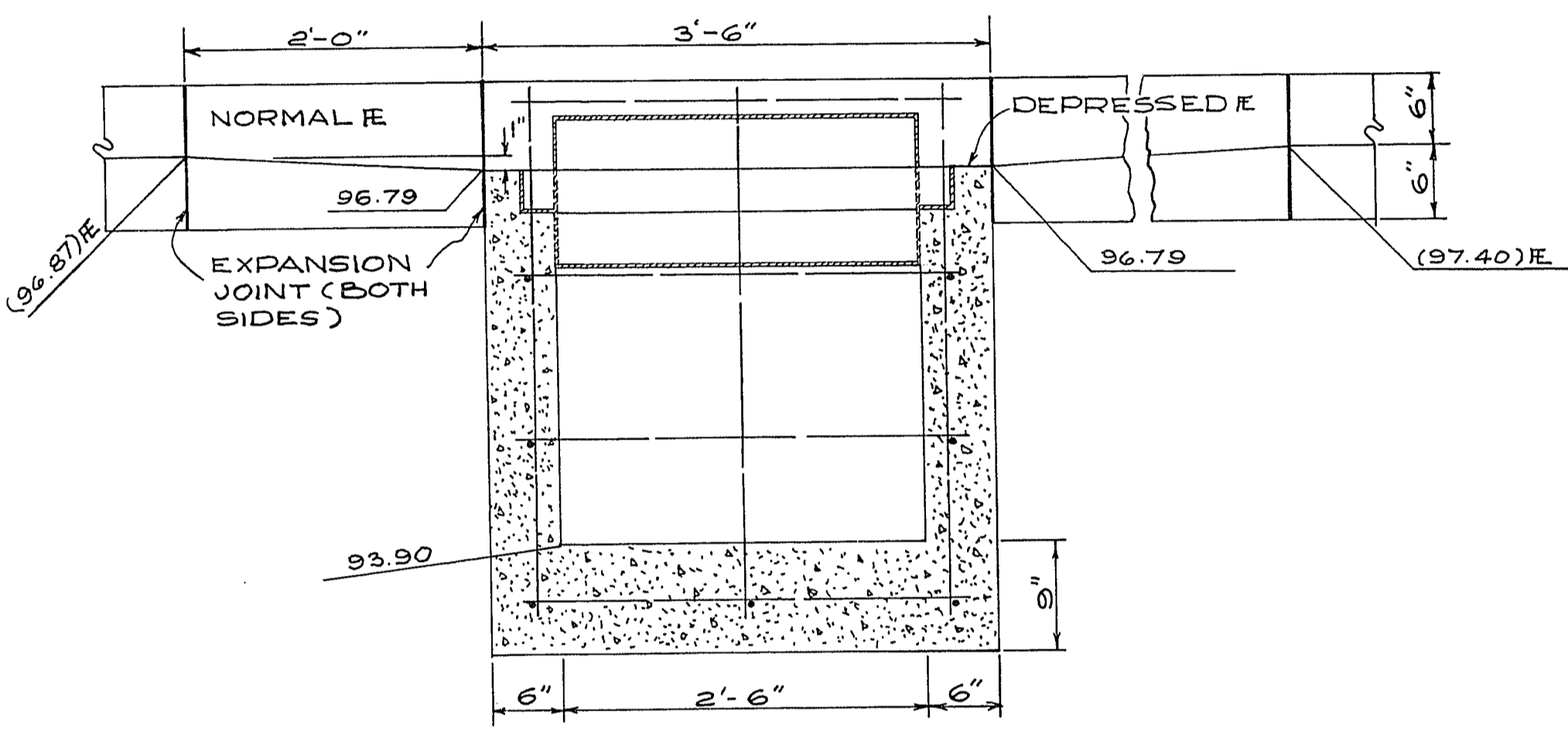
PLAN
SCALE 1/4" = 1'-0"



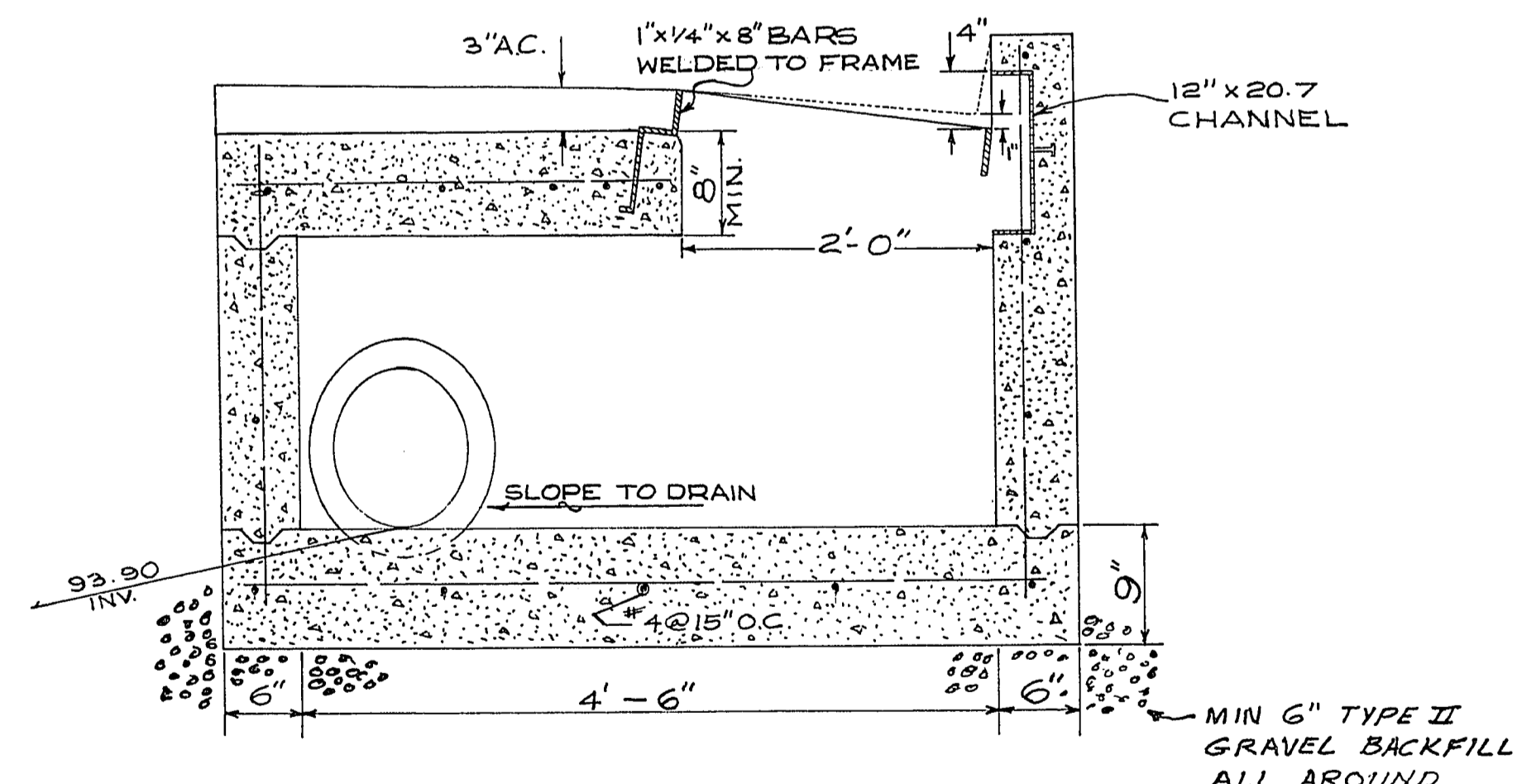
PLAN DROP
INLET



CHANNEL DETAIL

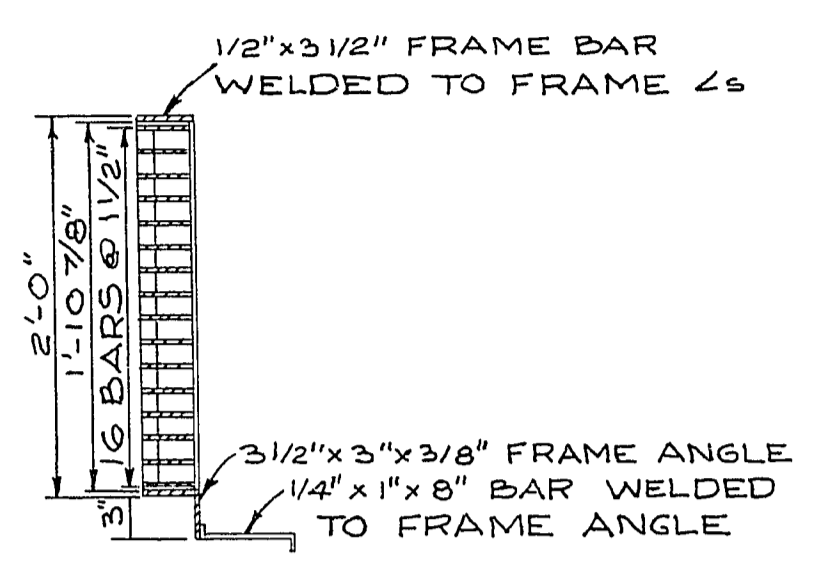


SECTION B-B

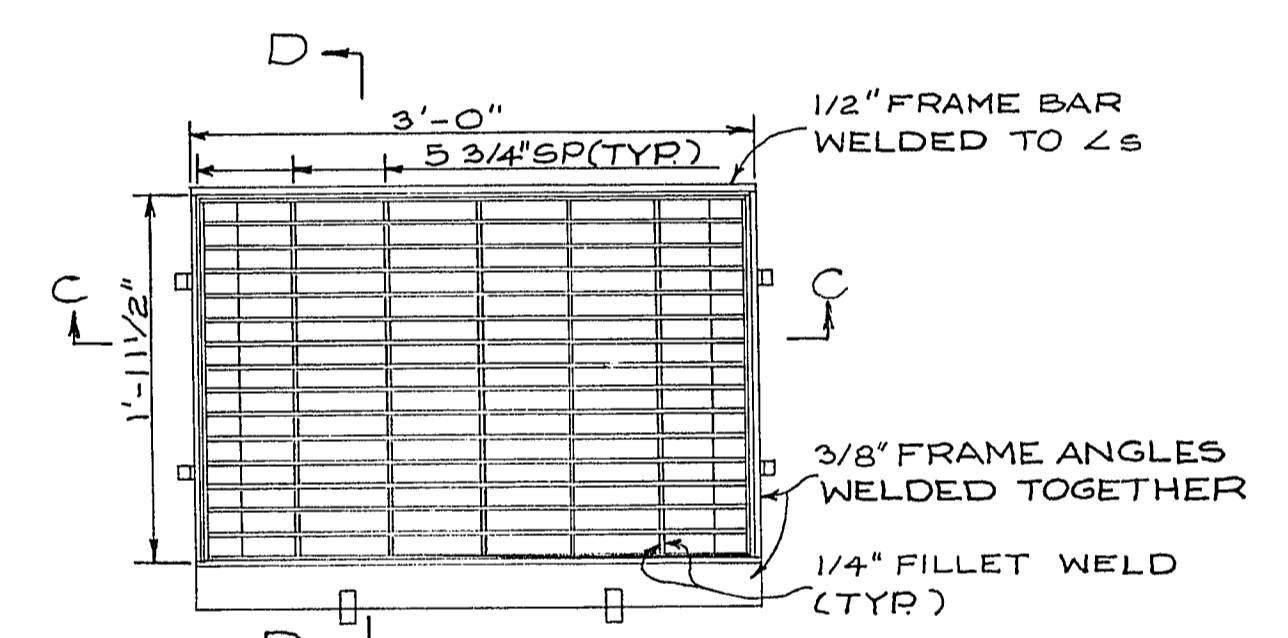


SECTION A-A

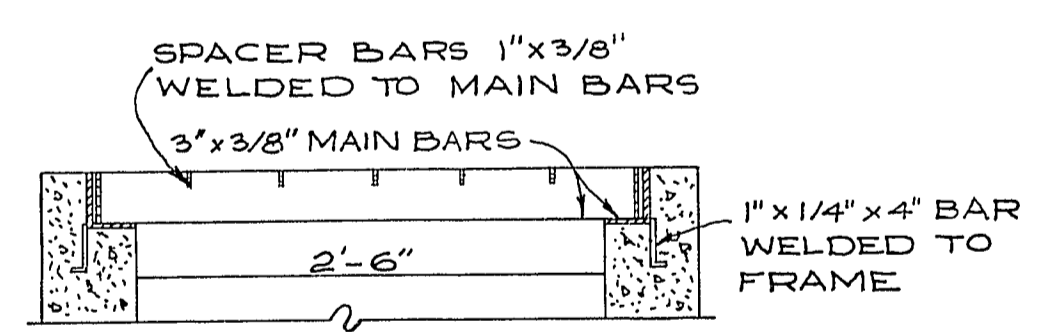
1. ALL CONCRETE SHALL BE CLASS 5.5B 3000
2. ALL REINFORCING STEEL SHALL BE TIGHTLY WIRED AND EMBEDDED 1" CLEAR OF CONCRETE SURFACE, EXCEPT AS NOTED, ALL REINFORCING STEEL SHALL BE #4 BARS WITH MAX. SPACE @ 18" CENTERS, EXCEPT AS NOTED.
3. EXPOSED EDGE OF CONCRETE SHALL BE CHAMFERED BY USING 1" TRIANGULAR MOLDING IN FORMS.



SECTION D-D



PLAN
GRATE AND
FRAME DET.



SECTION C-C

CONCRETE
BRICKS
MAR 17 1977

John Ressler

CITY OF LAS VEGAS NEVADA			
DEPARTMENT OF PUBLIC WORKS			
SERVICES DIVISION			
DROP INLET DETAILS			
W.O. NO. 0120	F. BK. NO. 68-333	DATE	DRAWING NO.
SC. (1) AS SHOWN	SC. (V)	14 Jan 77	113-160
DES. G. Billingsley		FILE NO.	
DR. MED. J. J.		APPROVED BY DIRECTOR OF PUBLIC WORKS	
<i>John Ressler</i>			
			SHEET 3 OF 3