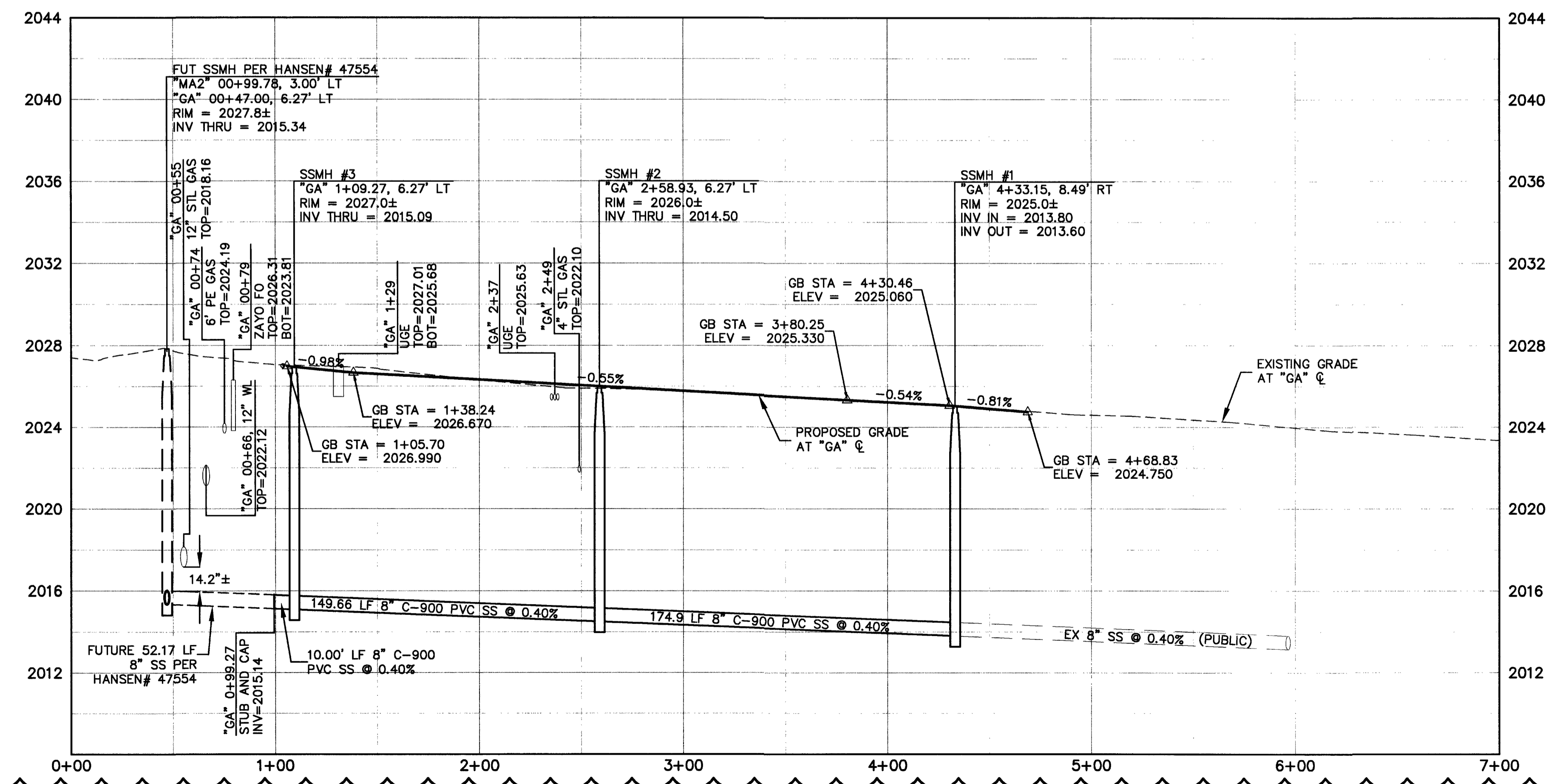


**SANITARY SEWER NOTES**

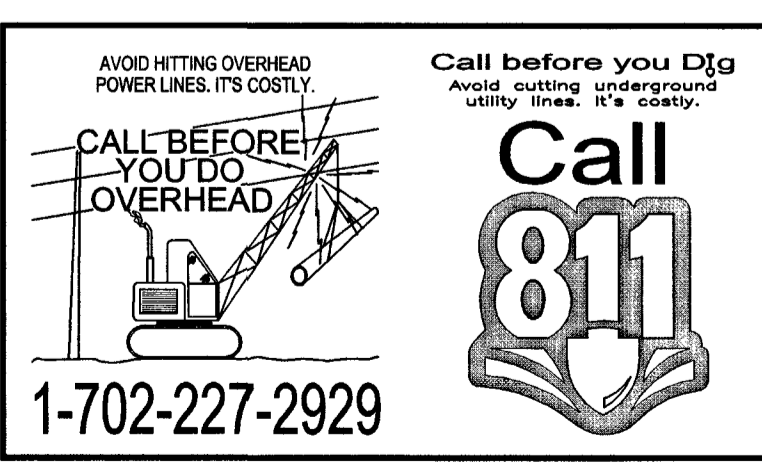
- ① INSTALL 48-INCH MANHOLE PER DCSWCS SD-1A
- ③ INSTALL 8" C-900 PVC SANITARY SEWER LINE PER DCSWCS
- ⑥ REMOVE EXISTING SANITARY SEWER MANHOLE
- ⑦ REMOVE/ABANDON EXISTING 8" SANITARY SEWER LINE PER DCSWCS SECTION 3.18.1.
- ⑨ FUTURE SANITARY SEWER PER HANSEN #47554

**SERVICE METER ACCOUNT & SIZE INFORMATION**  
 (A) ACCT# 3554, MTR# 587690, 5/8" MTR W/1" DCVA

- ROADWAY NOTE:**  
 REFER TO SHEETS R1 THROUGH R6 FOR ROADWAY CONSTRUCTION AND UTILITY ADJUSTMENTS.
- HARDSCAPE & STREET LIGHT NOTES:**  
 1. SEE HARDSCAPE PLANS FOR PLANTER BOX LOCATIONS  
 2. REFER TO STREET LIGHTING PLANS FOR NEW STREET LIGHT LOCATIONS
- WATERLINE RELOCATION NOTE:**  
 REFER TO SHEETS W1 THROUGH W3 FOR WATERLINE RELOCATION IMPROVEMENTS.



APPROVED FOR CONSTRUCTION  
*J. J. J. J.*  
 LAS VEGAS VALLEY WATER DISTRICT ENGINEERING SERVICES MANAGER  
 DATE 09/16/13 PROJECT NO. 116883



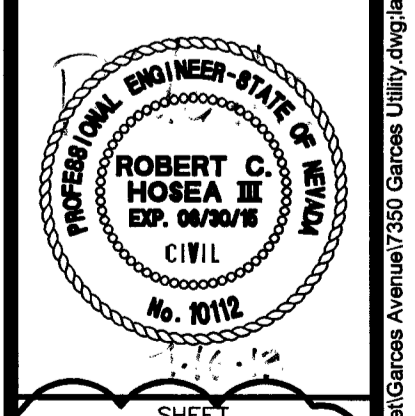
**PUBLIC WORKS DEPARTMENT**  
 333 N. RANSOME BLVD.  
 LAS VEGAS, NV 89106  
 702-229-8272



**SANITARY SEWER PLAN & PROFILE**  
 STA 00+00 TO STA 7+50.00  
 GARCES AVENUE

**DOWNTOWN PEDESTRIAN & BICYCLE IMPROVEMENTS**  
 GARCES AVENUE  
 MAIN STREET TO 6TH STREET

DRAWN BY: VTN 9/16/2013  
 DESIGNED BY: VTN 9/16/2013  
 CHECKED BY: VTN 9/16/2013  
 PROJECT NO: 116883  
 SCALE: HORIZ. 1"=40' VERT. 1"=4'



SHEET  
 UT1  
 OF SHEETS  
 107V5664-GARCES

3

3

107V5664-Garces Ave Utility Improvements, Sep. 16, 2013 - 8:11am