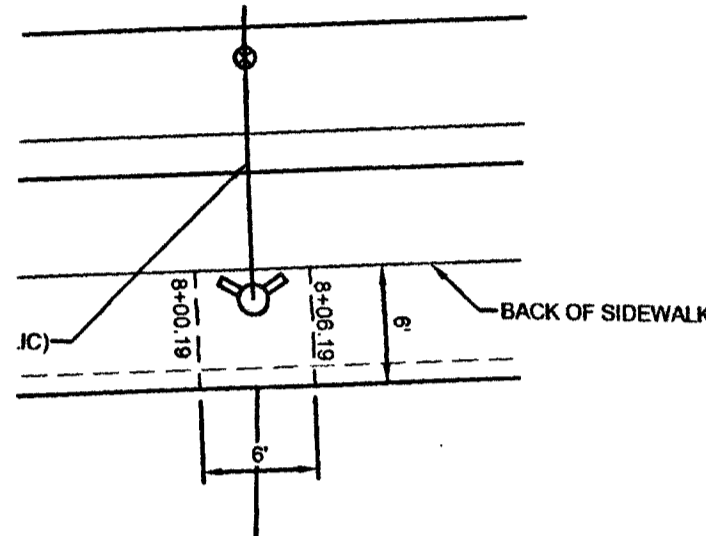


SCALE: 1"=30'



6' x 6' LVVWD EASEMENT FOR FIRE HYDRANT "C" NOT TO SCALE

PRIVATE STREET NOTE:

ALL PRIVATE STREETS ARE P.U.E., PUBLIC SEWER EASEMENTS, AND PUBLIC DRAINAGE EASEMENTS TO BE PRIVATELY MAINTAINED BY THE HOA.

DEDICATION NOTE

ALL EASEMENTS, RIGHT-OF-WAY, AND OTHER DEDICATIONS WITHIN THIS PLAN SET ARE GRANTED PER NFPM UNLESS OTHERWISE NOTED.

CAST IN PLACE SEWER MANHOLE BASE

CAST-IN-PLACE MANHOLE BASE REQUIRED TO CURE FOR A MINIMUM OF 7 DAYS BEFORE MANHOLE COMPONENTS

LINE & CURVE DATA NOTE

PLEASE REFER TO GRADING PLAN, SHEET C3 FOR CURVE DATA.

BENCHMARK

CITY OF LAS VEGAS BENCHMARK STATION: SLV90 24NEE8

RIVET AND PLATE IN THE TOP OF CURB AT THE SOUTHWEST CORNER OF DECATUR BOULEVARD AND DORRELL LANE.

ELEVATION = 702.412 METERS (NAV/88 2008 ADJUSTMENT)  
ELEVATION = 2304.61 US SURVEY FEET (NAV/88 2008 ADJUSTMENT)

BASIS OF BEARING

NORTH 00°47'07" WEST, BEING THE BEARING OF EAST LINE OF THE NORTHEAST QUARTER (NE 1/4) OF THE NORTHEAST QUARTER (NE 1/4) OF SECTION 24, TOWNSHIP 18 SOUTH, RANGE 60 EAST, M.D.M., CITY OF LAS VEGAS, CLARK COUNTY, NEVADA, AS RECORDED IN FILE 106 OF SURVEYS AT PAGE 81, OFFICIAL RECORDS OF CLARK COUNTY, NEVADA.

WATER MAIN JOINT DEFLECTION (PVC, 4" - 24")

PVC PIPE SHALL BE DEFLECTED AT THE JOINT ONLY. THE MAXIMUM ALLOWABLE DEFLECTION SHALL BE ONE (1) DEGREE PER JOINT WITH A MINIMUM RADIUS OF CURVATURE OF 1,150 FEET, PER UDACS 2.07.01 AND 2.07.02

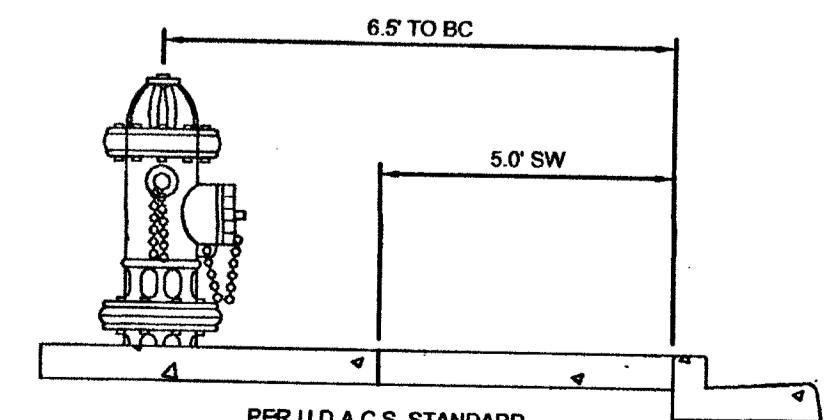
FOR CHANGED IN DIRECTION EXCEEDING THE MAXIMUM ALLOWABLE JOINT DEFLECTION DIRECTIONS SHALL BE USED.

FOR ALL DRY UTILITY CROSSINGS

- MAINTAIN MINIMUM 12" VERTICAL SEPARATION AT ALL POINTS OF CROSSINGS
- MAINTAIN MINIMUM 3" PARALLEL SEPARATION
- ANY EXCAVATION AT BACK OF CURB MUST REMAIN OPEN FOR INSPECTION OF COPPER SERVICE LATERALS. ANY COPPER SERVICE LATERAL KINKED, BENT OR OTHERWISE DAMAGED MUST BE REPLACED FROM THE MAIN TO THE ANGLE METER STOP.

DISCLAIMER NOTE

THE UNDERGROUND UTILITIES AS SHOWN HEREON HAVE BEEN LOCATED FROM OBSERVED FIELD SURVEY EVIDENCE AND EXISTING DRAWINGS, INCLUDING BUT NOT LIMITED TO THE FOLLOWING: PLANS PROVIDED BY THE CLIENT, UTILITY COMPANIES, AND MUNICIPAL AGENCIES. THE SURVEYOR MAKES NO GUARANTEE THAT THE UNDERGROUND UTILITIES SHOWN COMPRISE ALL SUCH UTILITIES IN THE AREA, EITHER IN SERVICE OR ABANDONED. THE SURVEYOR FURTHER DOES NOT WARRANT THAT THE UNDERGROUND UTILITIES SHOWN ARE IN THE EXACT LOCATION INDICATED ALTHOUGH HE DOES CERTIFY THAT THEY ARE LOCATED AS ACCURATELY AS POSSIBLE FROM INFORMATION AVAILABLE. THE SURVEYOR HAS NOT PHYSICALLY LOCATED THE UNDERGROUND UTILITIES.



FIRE HYDRANT DETAIL WITH 5' SIDEWALK NOT TO SCALE

TO ENSURE LVVWD ACCESS WITHIN EASEMENT ALL ABOVE GROUND OBSTRUCTIONS INCLUDING BUT NOT LIMITED TO LANDSCAPE BOUNDARIES, FENCES/WALLS, AND SIGNS ARE STRICTLY PROHIBITED IN EASEMENT

PROTECT IN PLACE AND ADJUST LVVWD EXISTING FACILITIES TO FINISHED GRADE PER UDACS. ALL LVVWD FACILITIES SHALL BE ACCESSIBLE AT ALL TIMES.

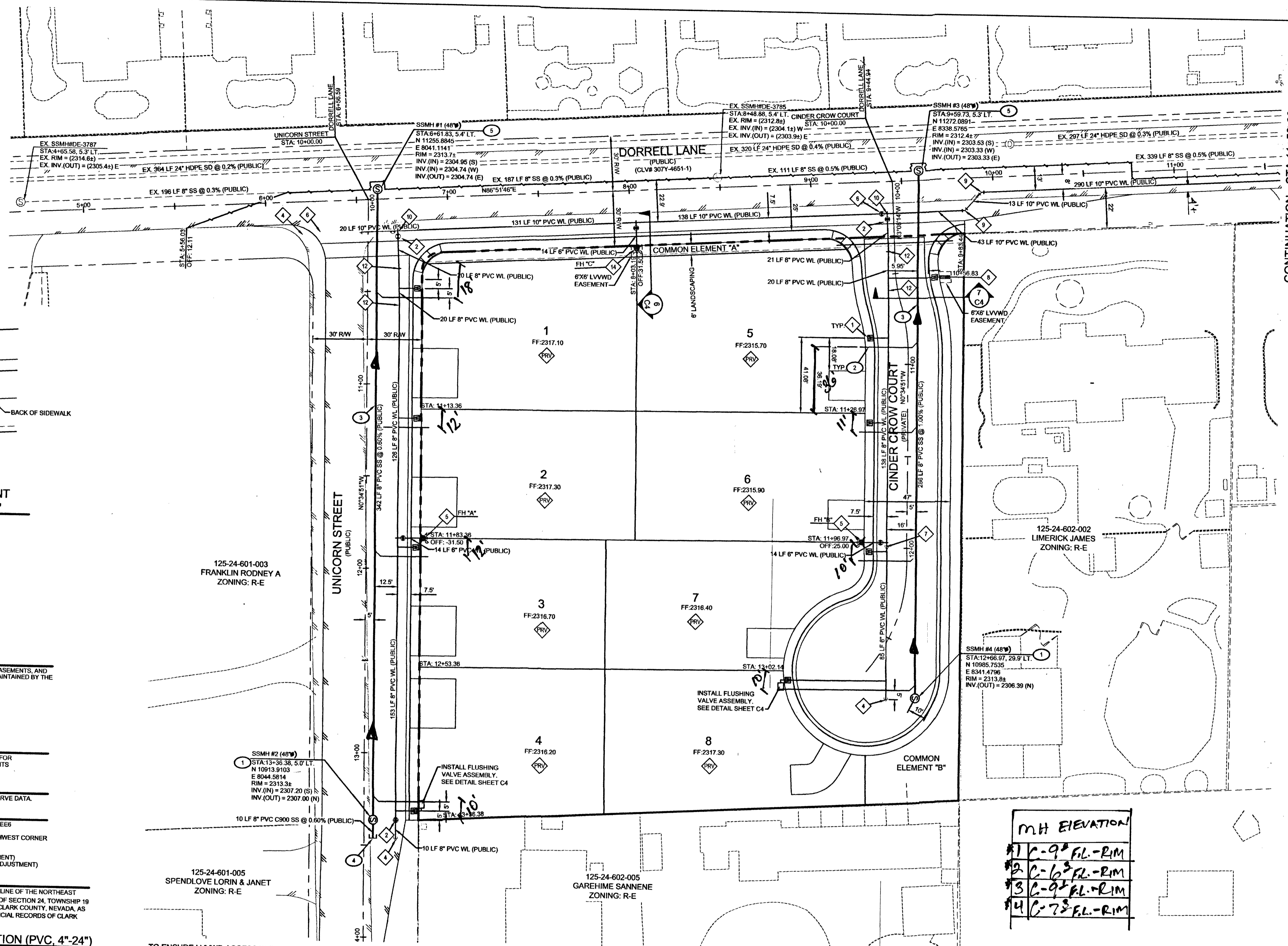
NOTE

LVVWD IS NOT RESPONSIBLE FOR WATER SERVICE LATERALS PAST LVVWD METER AND OR BACKFLOW.

LOTS 1 THRU 8 & IRRIGATION METER

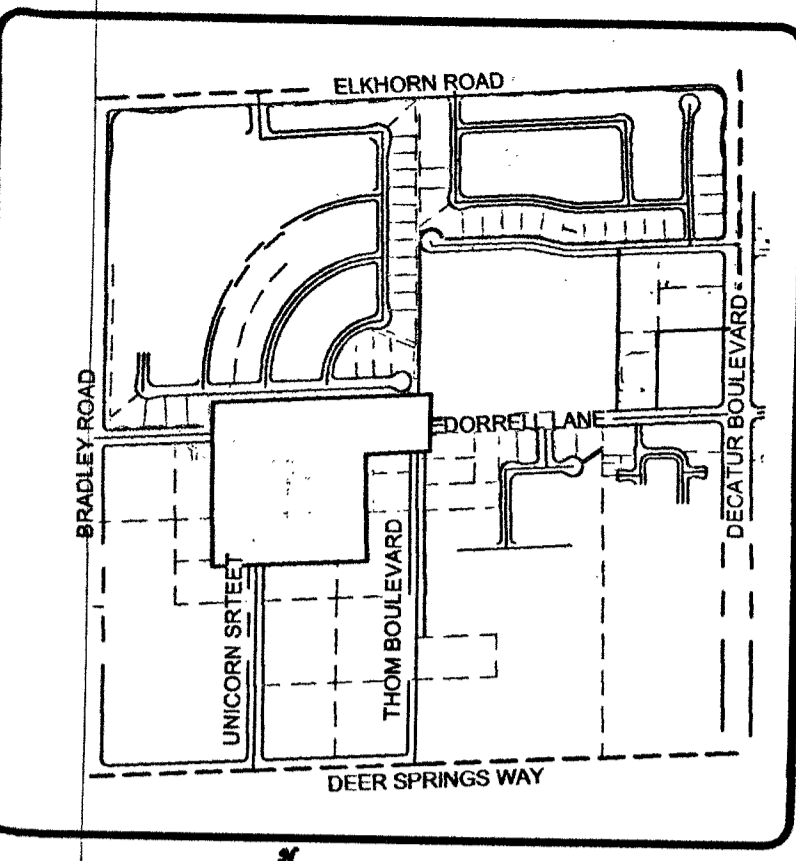
THIS PROPERTY MAY HAVE STATIC PRESSURE IN EXCESS OF 80 PSI. THE UNIFORM PLUMBING CODE REQUIRES THAT INDIVIDUAL, ON-SITE (PRIVATE) PRESSURE REDUCING VALVES (PRV) BE INSTALLED WHENEVER THE PRESSURE EXCEEDS 80 PSI. PRVS ARE THE DEVELOPER'S RESPONSIBILITY, AND WILL NOT BE INSPECTED OR INCLUDED IN THE ACCEPTANCE OF LVVWD FACILITIES.

FAST logo and call information: Call before you Dig, 1-702-432-5300, 1-800-227-2600, 1-702-227-2929



CONTINUATION - STA 11+50.00 SEE ABOVE RIGHT

CONTINUATION - STA 11+50.00 SEE BELOW LEFT



KEY MAP SCALE: NTS

UTILITY LEGEND

- EXISTING RIGHT-OF-WAY
- PROPOSED LOT LINE
- PROPOSED PROPERTY BOUNDARY LINE
- PROPOSED RIGHT-OF-WAY
- MATCHLINE
- EXISTING WATER LINE (SIZE PER PLAN)
- EXISTING SEWER LINE (SIZE PER PLAN)
- PROPOSED WATER LINE (SIZE PER PLAN)
- PROPOSED SANITARY SEWER LINE (SIZE PER PLAN)
- PROPOSED FIRE HYDRANT
- PROPOSED WATER VALVE
- PROPOSED WATER METER
- PROPOSED REDUCER
- EXISTING WATER VALVE
- PROPOSED SEWER MANHOLE
- PROPOSED SEWER WYE (SIZE AND DIRECTION PER PLAN)
- EXISTING SEWER MANHOLE
- EXISTING LIGHT W/ POLE & BASE

ESTIMATED AVERAGE DAILY SEWER CONTRIBUTIONS:

Table with 2 columns: Units x 250 GPD/Unit, Contribution. Values: 8 UNITS x 250 GPD/UNIT = 2,000 GPD; TOTAL AVG CONTRIBUTION = 0.002 MGD; TOTAL PEAK FLOW = 0.009 MGD

FIRE FLOW CALCULATION

Table with 2 columns: Item, Value. Includes occupancy (R-3), fire flow (1750 GPM @ 20 PSI), and other fire flow parameters.

WATER CONSTRUCTION NOTES

- INSTALL 3/4" WATER METER (DOMESTIC) COMPLETE WITH 1" COPPER WATER SERVICE LINE WITH SERVICE SADDLE AND CORPORATION STOP PER UDACS PLATE 1
- INSTALL 8" GATE VALVE PER UDACS PLATE 30 AND 39
- INSTALL 8" x 8" TAPPING TEE W/ 8" TAPPING VALVE PER UDACS PLATE 30, 39, AND 24 AND SECTION 2.4.01A
- INSTALL CAP WITH 2" BLOW-OFF ASSEMBLY PER UDACS PLATE 36
- INSTALL FIRE HYDRANT ASSEMBLY WITH 8" x 6" TEE AND 6" GATE VALVE PER UDACS PLATE 40, CONDITION G
- INSTALL 10" GATE VALVE PER UDACS PLATE 30 AND 39
- INSTALL 8" x 6" REDUCER PER UDACS PLATE 30 AND 39
- INSTALL 1" WATER METER AND 1" RPPA (IRRIGATION) PER UDACS PLATE 4, 8, AND DETAIL 4C4
- INSTALL 10" 45° BEND PER UDACS PLATE 31
- INSTALL 10" x 8" TEE PER UDACS PLATE 31
- INSTALL 3" IRRIGATION SLEEVES
- 12" DEFLECTION AT PIPE JOINTS PER UDACS SECTION 2.07
- INSTALL 10" x 8" REDUCER PER UDACS PLATE 30 AND 39
- INSTALL FIRE HYDRANT ASSEMBLY WITH 10" x 6" TEE AND 6" GATE VALVE PER UDACS PLATE 40, CONDITION G
- PRESSURE REDUCING VALVE

SEWER CONSTRUCTION NOTES

- INSTALL 48" STANDARD PRECAST MANHOLE PER DCSWCS DWG SD-1A, SD-1B, SD-4 & SD-5 WITH SINGLE 24" LID
- INSTALL 4" PVC SEWER LATERAL @ MINIMUM 2% SLOPE, 4" SEWER WYE & MARKER BALL PER DCSWCS SD-22, SD-25 & SD-17, STUB AND CAP 4" SEWER LATERAL 5' PAST PROPERTY LINE
- INSTALL SEWER PIPE IN TRENCH & BACKFILL (60' OR LESS RW) PER DCSWCS NO. SD-15 & SD-17
- INSTALL 8" CAP WITH 1 FT CONCRETE THRUST BLOCK ON SEWER STUB, PER DCSWCS SEC. 2.2.5
- INSTALL 48" CAST IN PLACE MANHOLE PER DCSWCS DWG SD-4, SD-5 & SD-7. SEE CAST IN PLACE MANHOLE NOTE THIS SHEET, WITH SINGLE 24" LID

MH ELEVATION table with 2 columns: Manhole ID, Elevation. Values: 1 C-9 FL-RIM, 2 C-6 FL-RIM, 3 C-9 FL-RIM, 4 C-7 FL-RIM

6' x 6' LVVWD EASEMENT FOR IRRIGATION RPPA NOT TO SCALE

TYPICAL UTILITY LOCATION NOT TO SCALE

Las Vegas Fire & Rescue signature and date 7/25/18

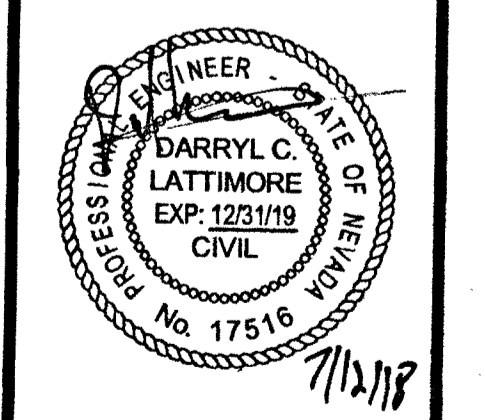
APPROVAL: Southwest Gas Corporation signature and date 7/13/18

APPROVED FOR CONSTRUCTION stamp with project details: Project No. 126407, First Approved Date: 10-10-18, LVVWD Approved Fire Flow: 1750 GPM @ 20 PSI Residual, Maximum Available Fire Sprinkler Flow: N/A GPM

UTILITY PLAN

BY: DECATUR & DONALD III BEAZER HOMES CITY OF LAS VEGAS, NEVADA

Table with columns: DATE, DESCRIPTION, and a grid for notes.



DATE: 07-12-2018, DRAWN: BPRP, DESIGNED: BP, CHECKED: DCL, PROJECT #: BZR011801, SHEET TITLE: UTILITY, SHEET NUMBER: 1075008, C5

Acus logo and contact information: 3203 E. Warm Springs Rd., Suite 400, Las Vegas, NV 89120, www.acus-nv.com, (702) 986-9298

AS BUILT

AS BUILT

PROJECT: 126407-A, CS: 125-24-NE