



OUTSIDE PLANT CONSTRUCTION  
FIBER OPTIC CABLE ROUTE

PROJECT/AFE #: 1711BOPK.1

WEST ELKHORN ROAD & NORTH JONES BOULEVARD

CITY OF LAS VEGAS, NEVADA

HUB: LSV ALLEN - CELL SITE: LSV ALLEN BACK HAUL - 905026


CONSTRUCTION DRAWING 4/23/2019

MCI metro ACCESS TRANSMISSION SERVICES CORP.  
d/b/a Verizon Access Transmission Services

NOTE: ALL THE ABOVE GROUND UTILITY APPURTENANCES SHALL CONFORM TO THE REQUIREMENTS OF CLV UNIFIED DEVELOPMENT CODE TITLE 19.06 AND 19.08

CITY OF LAS VEGAS  
APPROVED FOR CONSTRUCTION

THIS APPROVAL IS FOR WORK IN CLV R/W & EASEMENT ONLY. OBTAINING PERMISSIONS OR EASEMENTS FOR WORK SHOWN ON PRIVATE PROPERTY IS THE RESPONSIBILITY OF THE UTILITY.

APPROVAL BY:  100V9783-FIB DATE 6 25 19

CLV NOTE: PROTECT ALL EXISTING STORM DRAIN SYSTEMS AND THE ASSOCIATED FACILITIES IN PLACE.

6/1/19  
LSV-00838 5/1/19





# CONTACT SHEET/ DETAILS

**MCImetro ACCESS TRANSMISSION SERVICES CORP.**  
**d/b/a Verizon Access Transmission Services**

**OUTSIDE PLANT ENGINEERING:**

PROJECT ENGINEER: CORY VANDERBOS  
 SUPERVISOR: N/A  
 MANAGER: N/A

**OUTSIDE PLANT CONSTRUCTION:**

PROJECT SUPERVISOR:  
 FIELD CONST. SUPERINTENDENT:  
 MANAGER: N/A

**RIGHT-OF-WAY:**

AGENT:  
 MANAGER:

**CONTRACTS:**

COORDINATOR: N/A  
 MANAGER: N/A

**OTHERS:**

PROGRAM MANAGER: N/A  
 LIGHTWAVE ENGINEER: N/A  
 CIVIL ENGINEER: N/A  
 TERMINAL CONST. REP.: N/A  
 SPLICING MANAGER: N/A  
 TSO MANAGER: N/A

**ENGINEERING CONTRACTOR**

NAME OF FIRM: BPG DESIGNS 1-602-954-2223  
 PROJECT MANAGER:  
 ENG. PROJECT SUPERVISOR:

**CONSTRUCTION CONTRACTOR**

NAME OF FIRM: TEAM FISHEL 1-702-644-4565  
 PROJECT COORDINATOR:

**CITY GOVERNMENT**

**BUREAU OF ENGINEERING:**

CITY ENGINEER:

**UTILITIES**

WORLD.COM UTILITY LOCATE 1-800-624-9675  
 USA NORTH BLUESTAKE 811

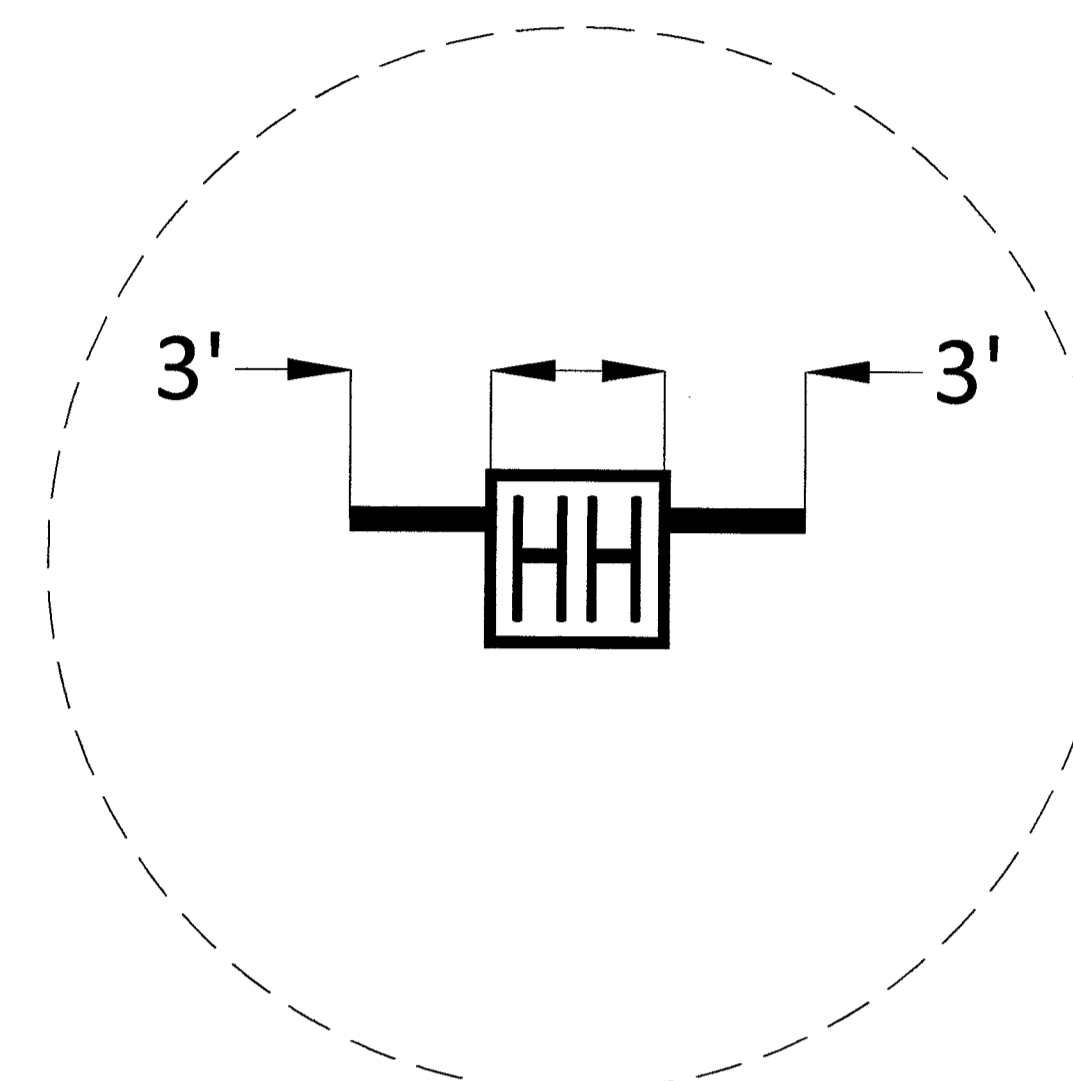
**PROJECT TOTALS SUMMARY**

**MATERIALS**

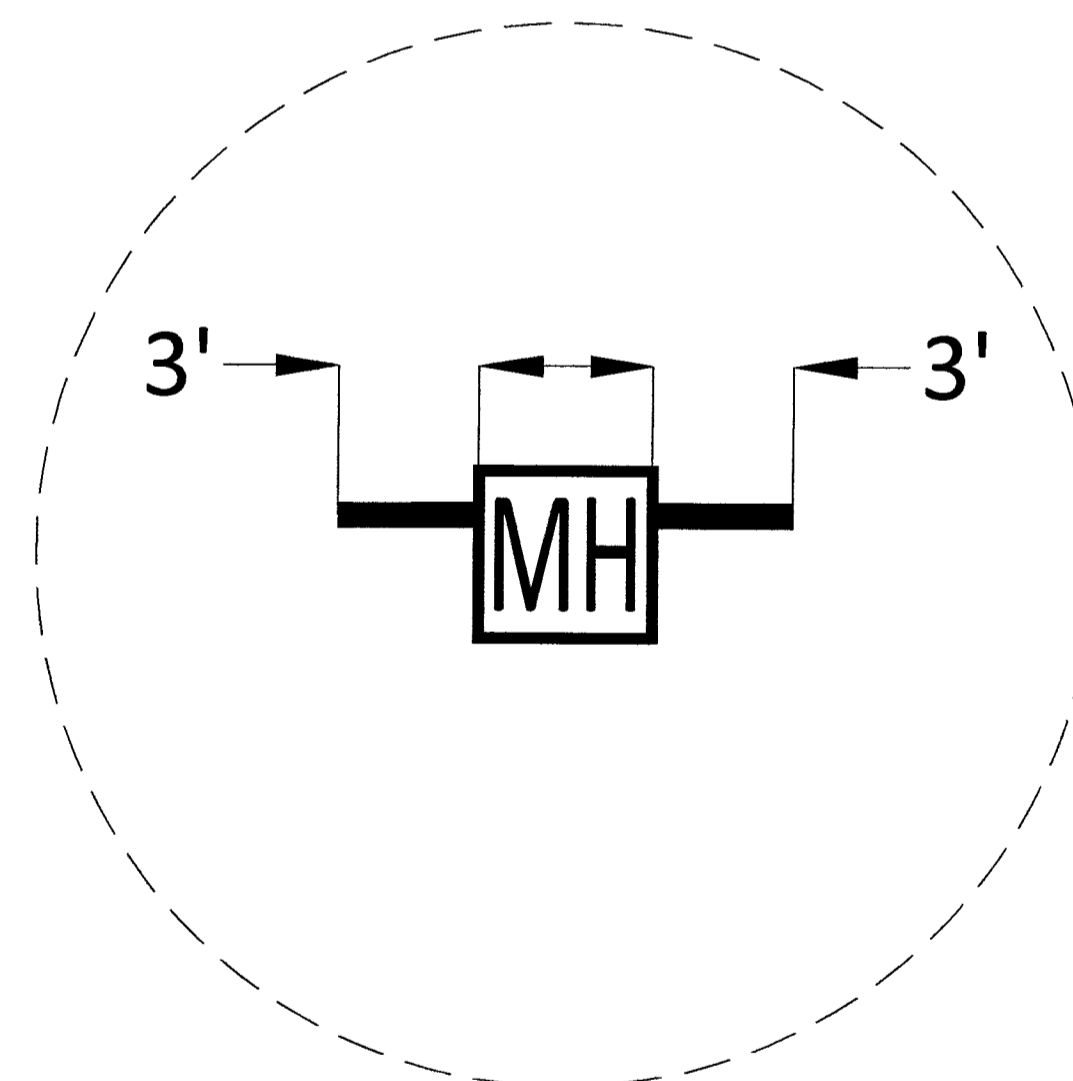
2" HDPE CONDUIT(S):  
 2.5" HDPE CONDUIT(S):  
 4" HDPE CONDUIT(S):  
 2' x 3' x 2' HANDHOLE(S):  
 2.5' x 5' x 2.5' HANDHOLE(S):  
 4' x 4' x 4' MANHOLE(S):

**WORK TYPE**

AERIAL: -  
 VZW CONDUIT: -  
 3RD PARTY CONDUIT: 257'  
 TRENCH: -  
 ASPHALT CUT: -  
 BORE: -  
 TOTAL NEW UG FOOTAGE: -  
 TOTAL FOOTAGE: 257'



**HANDHOLE DETAIL**  
**N.T.S**  
 2-2" STUBOUTS  
 ORIENTATION MAY VARY  
 PLACE STUBOUTS TOWARDS BACK OF  
 SIDEWALK WHERE POSSIBLE



**MANHOLE DETAIL**  
**N.T.S**  
 2-2" STUBOUTS  
 ORIENTATION MAY VARY  
 PLACE STUBOUTS TOWARDS BACK OF  
 SIDEWALK WHERE POSSIBLE



CELL SITE: LSV ALLEN BACK HAUL - 905026 - REV 12-31-19

CITY OF LAS VEGAS, NEVADA

CLARIFICATION NO. QUANTITY

MCI COMMUNICATIONS SERVICES, INC.

OUTSIDE PLANT CONSTRUCTION

HUB: LSV ALLEN - CELL SITE: LSV ALLEN BACK HAUL - 905026 - REV 12-31-19

DATE: 12/31/2019  
 DRAWN BY: RJOHNSON

**REVISIONS**

DATE	DESCRIPTION	INITIAL
12-12-19	CHANGED (2) 2" HDPE TO (2) 2.5" HDPE SHEETS 3, 8, 9	RJ
12-31-19	EXISTING CONDUIT TO BE USED INSTEAD ON SHT. 8	RJ

EXCEPT AS MAY BE OTHERWISE PROVIDED BY CONTRACT, THESE DRAWINGS AND SPECIFICATIONS SHALL REMAIN THE PROPERTY OF MCI COMMUNICATIONS SERVICES, INC. BOTH BEING ISSUED IN STRICT CONFIDENCE AND SHALL NOT BE REPRODUCED, COPIED, OR USED FOR ANY PURPOSE WITHOUT SPECIFIC WRITTEN PERMISSION.

**SCALE**

HORIZONTAL: 1"=30'

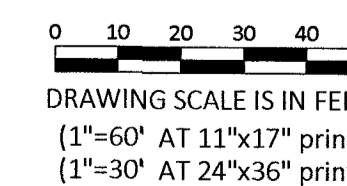
VERTICAL: NA

MP TO MP

SHEET 3 OF 9

FILE: LSV ALLEN BACK HAUL - 905026 - REV 12-31-19

REVIS  
 L19-00838-001  
 10/1/2018-FIB



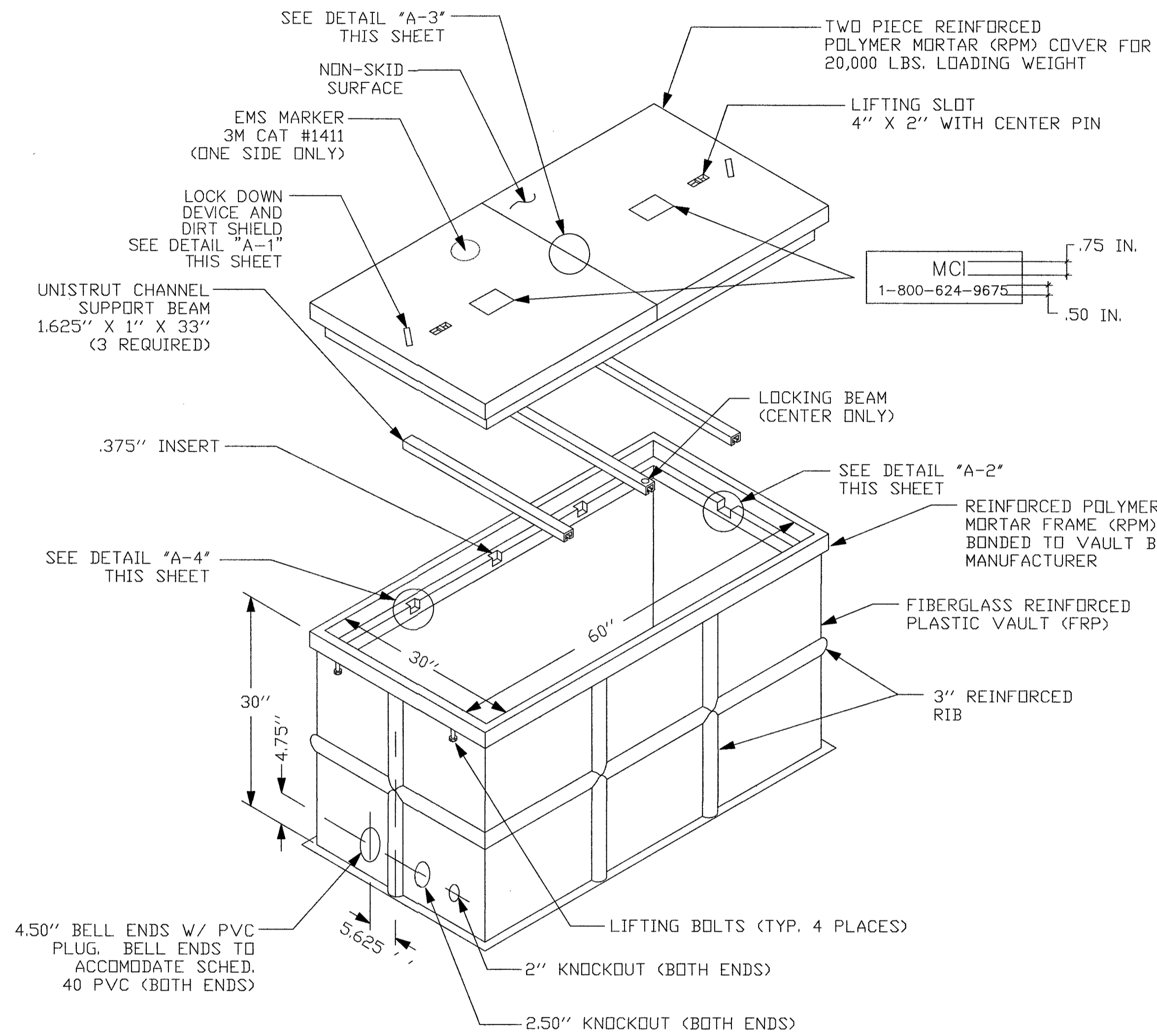
DRAWING SCALE IS IN FEET:  
 (1"=60' AT 11"x17" print)  
 (1"=30' AT 24"x36" print)



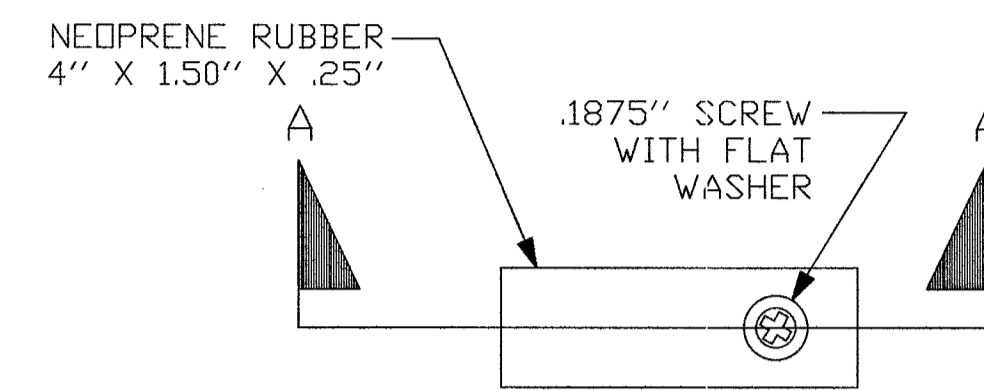


# 2.5' x 5' x 2.5' HANDHOLE DETAILS

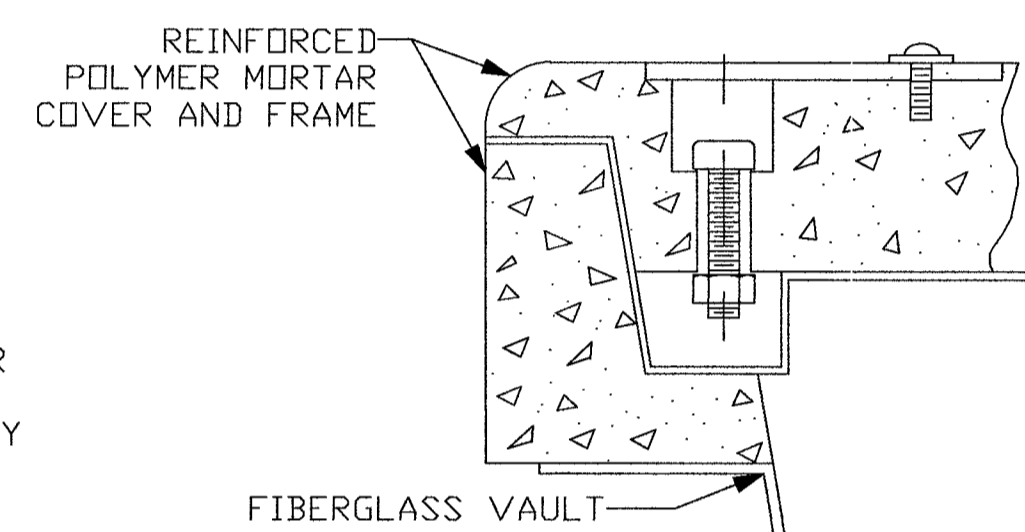
DETAIL "A"  
EXPLODED ISOMETRIC DETAIL



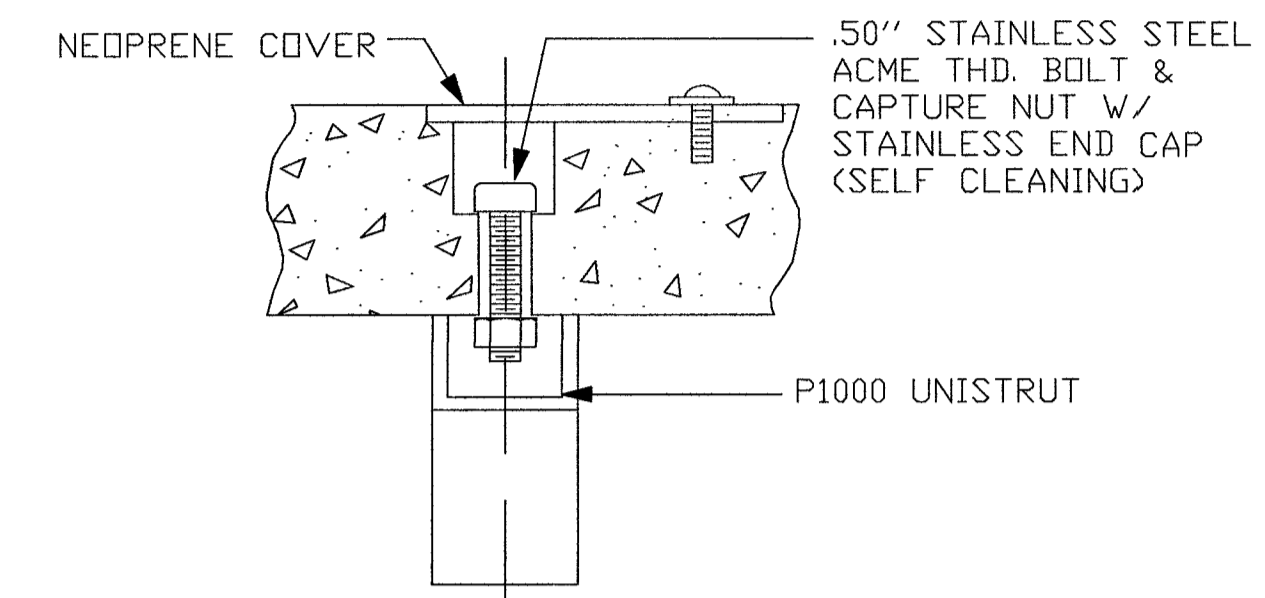
DETAIL "A-1"  
LOCK DOWN DEVICE



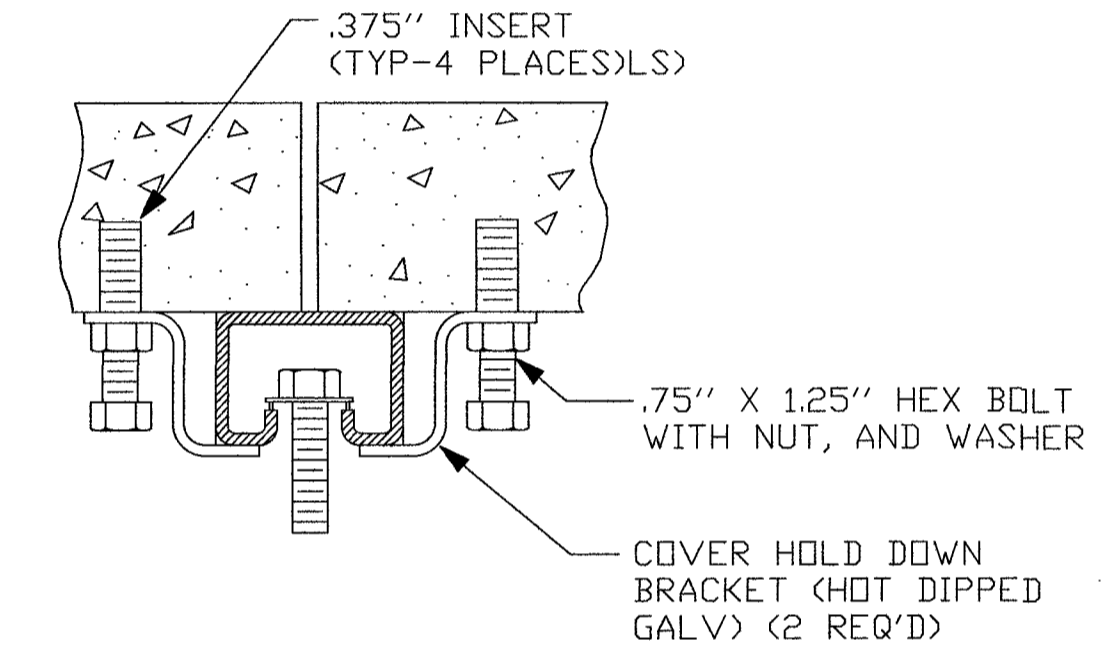
SECTION A-A  
LOCKING DEVICE CROSS SECTION



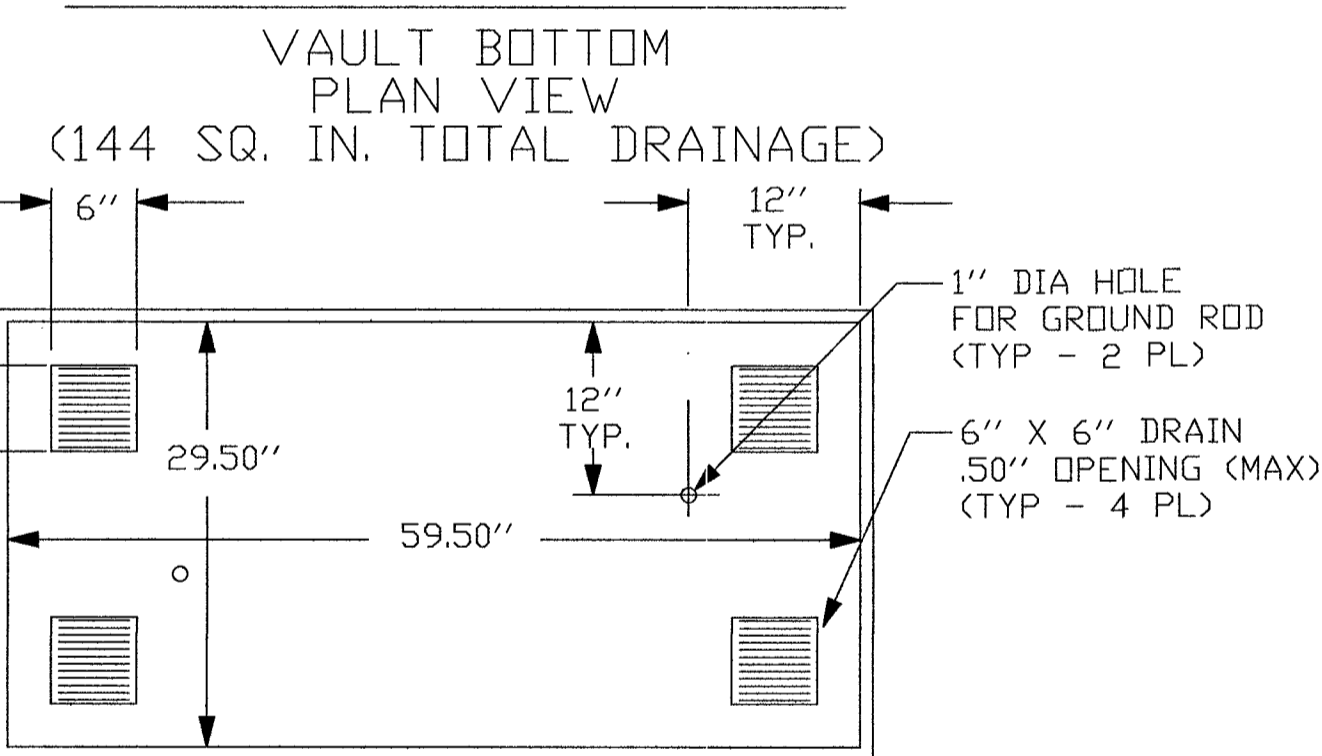
DETAIL "A-2"  
ENGAGED LOCK DOWN DEVICE



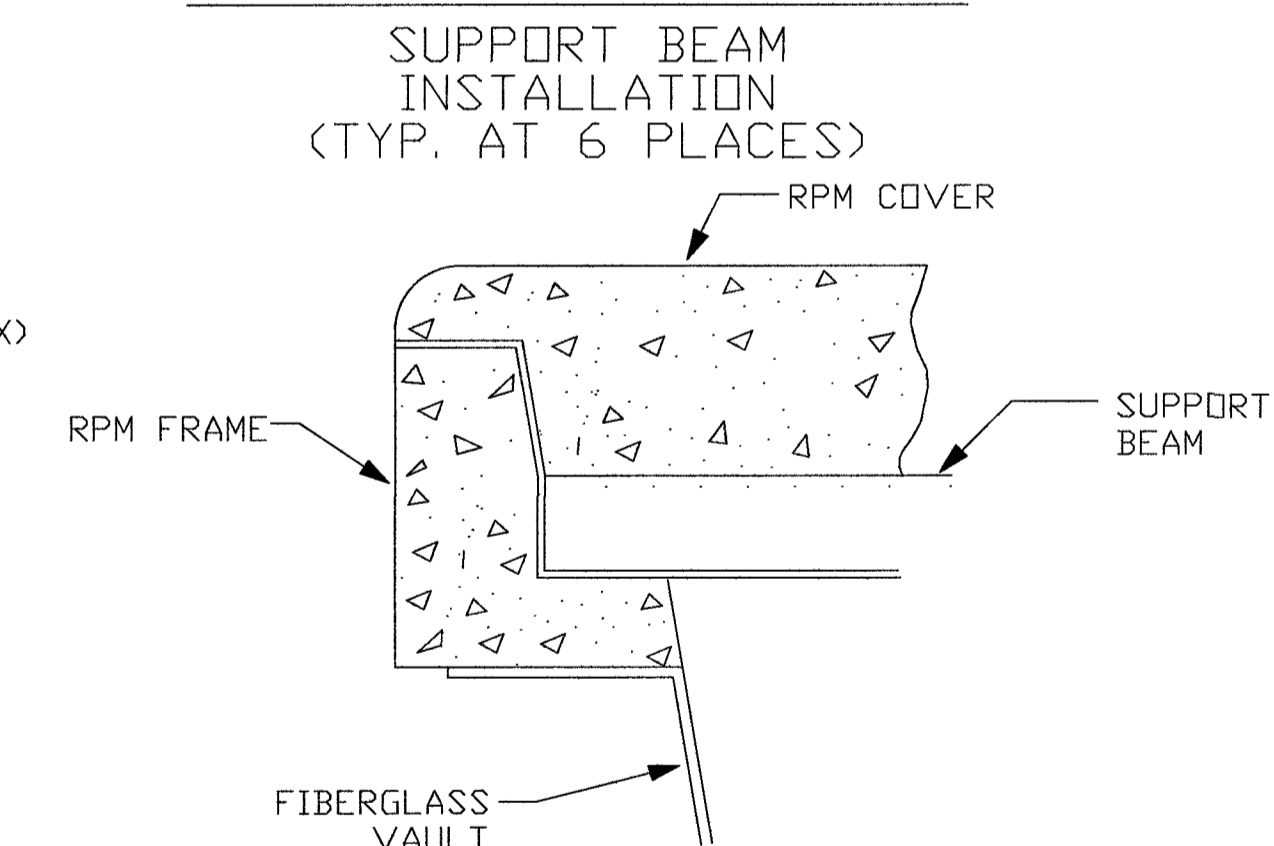
DETAIL "A-3"  
COVER HOLD DOWN BRACKET OF 2-PIECE RPM COVER



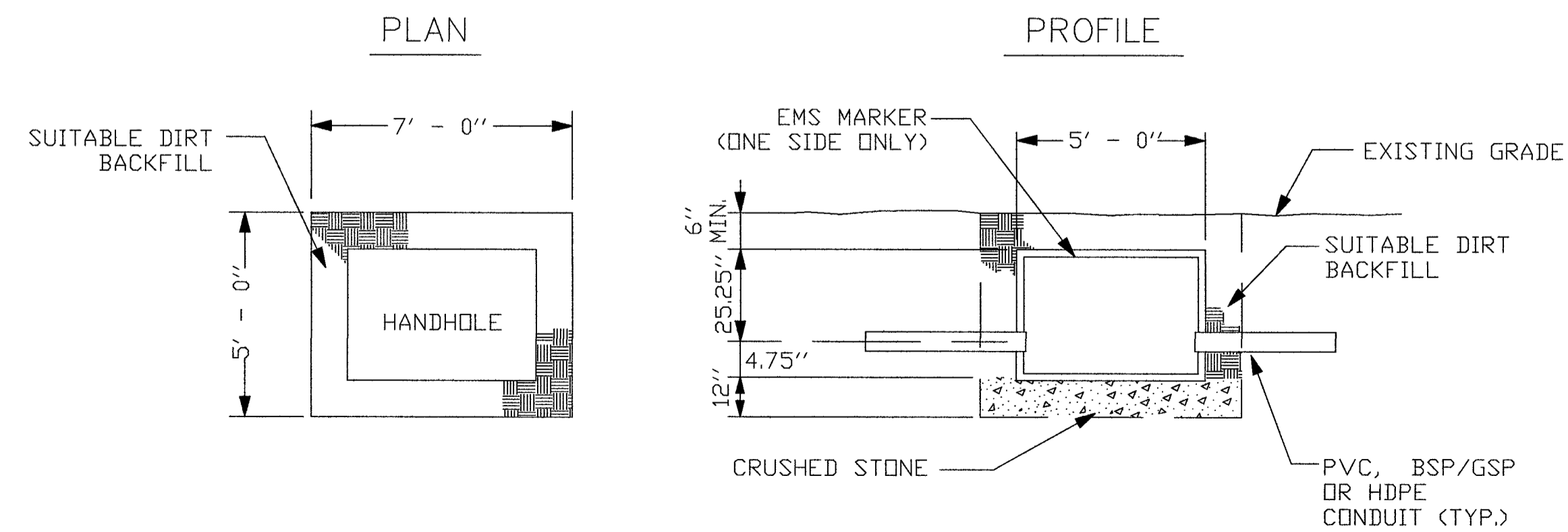
DETAIL "B"



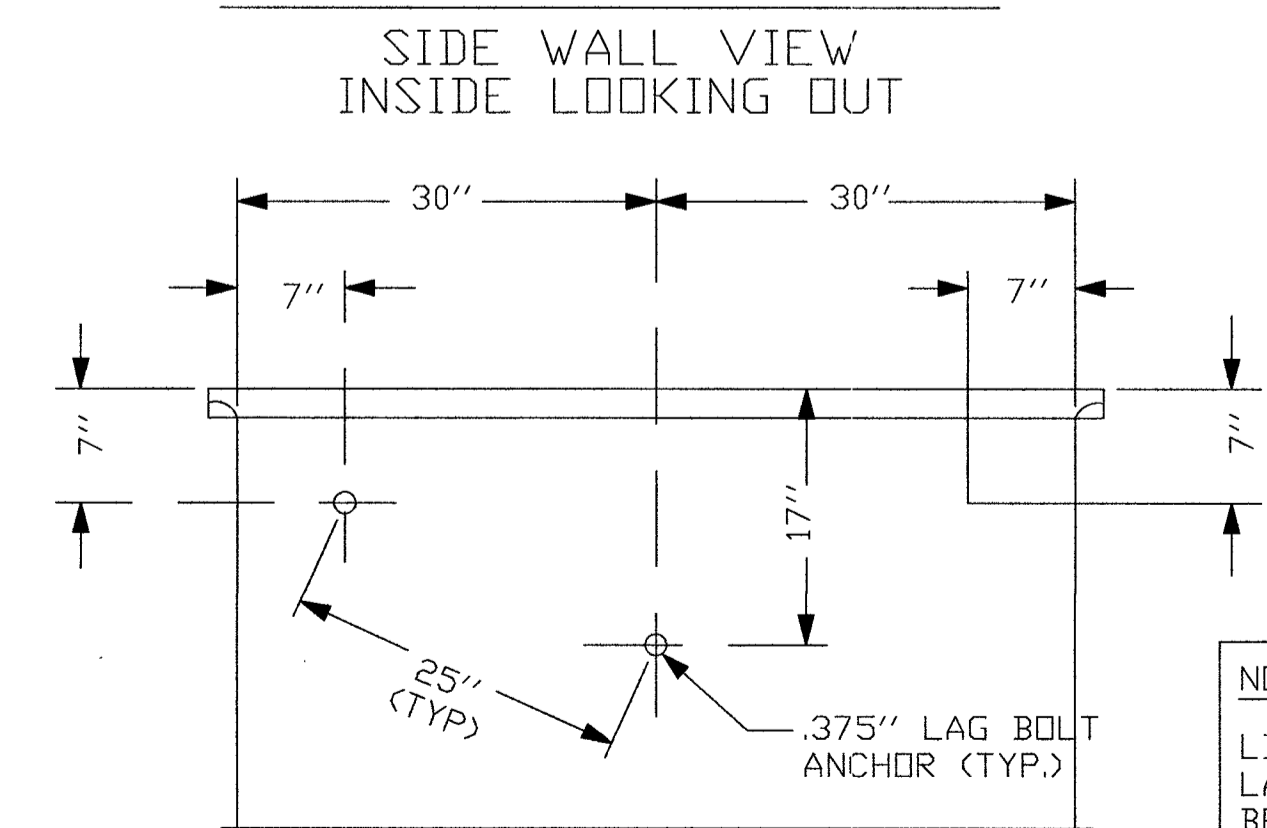
DETAIL "A-4"



DETAIL "C"  
EXCAVATION PIT



DETAIL "D"



NOTE:  
LINEAR DISTANCE BETWEEN LAG BOLT ANCHORS MUST BE 25".

- NOTES:
- VOID IN EXCAVATED AREAS TO BE BACKFILLED WITH SELECT MATERIAL.
  - BOTTOM OF EXCAVATED PIT TO BE BACKFILLED WITH 12" OF CRUSHED STONE (.75" GRADE).
  - SHORING WILL BE REQUIRED.
  - ALL HANDHOLES SHALL BE PLACED BELOW EXISTING GRADE.
  - THIS HANDHOLE IS OF FIBERGLASS MATERIAL, APPROXIMATELY POUNDS IN WEIGHT. THE LIDS ARE POLYMER CONCRETE MATERIAL, EACH APPROXIMATELY POUNDS.



CELL SITE: LSV ALLEN BACK HAUL - 905026

CITY OF LAS VEGAS, NEVADA

CLARIFICATION NO. QUANTITY

MCI COMMUNICATIONS SERVICES, INC.

OUTSIDE PLANT CONSTRUCTION

HUB: LSV ALLEN - CELL SITE: LSV ALLEN BACK HAUL - 905026

DATE: 4/23/2019

DRAWN BY: JJAMES

REVISIONS

DATE	DESCRIPTION	INITIAL

SCALE

HORIZONTAL: 1"=30'

VERTICAL: NA

MP TO MP

SHEET 6 OF 9

FILE: LSV ALLEN BACK HAUL - 905026

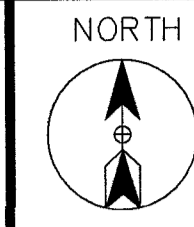
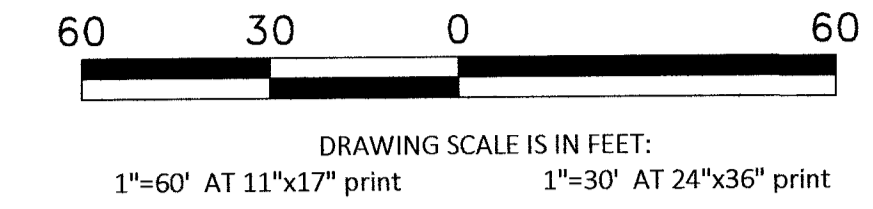
MCI COMMUNICATIONS SERVICES, INC. - LSV ALLEN TO LSV QUAIL VIEW CONSTRUCTION DRAWINGS

07/10



# CONSTRUCTION DRAWING

## CITY OF LAS VEGAS, NEVADA

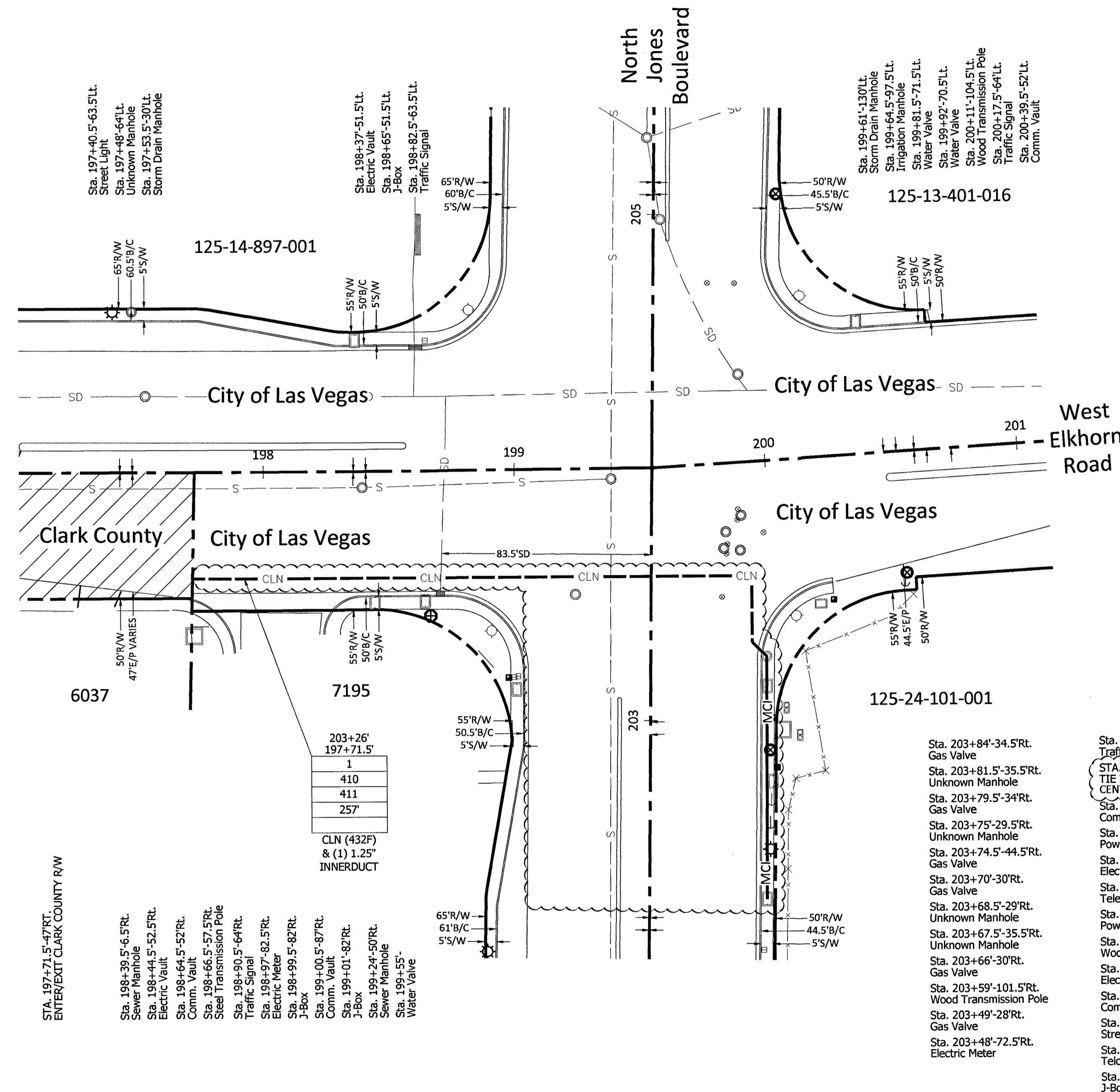


Call at least two full working days before you begin excavation.



CELL SITE: LSV ALLEN BACK HAUL - 905026 - REV 12-31-19

CITY OF LAS VEGAS, NEVADA	
CLARIFICATION NO.	QUANTITY
SHEET TOTAL	
2" HDPE CONDUIT:	-
2.5" HDPE CONDUIT:	-
4" HDPE CONDUIT:	-
2' x 3' x 2' HANDHOLE(S):	-
2.5' x 5' x 2.5' HANDHOLE(S):	-
4' x 4' x 4' MANHOLE(S):	-
MANHOLE(S):	-
AERIAL:	-
VZW CONDUIT:	-
3RD PARTY CONDUIT:	257'
TRENCH:	-
BORE:	-
TOTAL NEW UG FOOTAGE:	-
TOTAL FOOTAGE:	257'



**RTC NOTES:**

BACKFILL AND RIGHT OF WAY RESTORATION SHALL CONFORM TO CLARK COUNTY UNIFORM STANDARD DRAWINGS

1	500.1	0 TO 5 YEARS PAVEMENT RESTORATION LONGITUDINAL CUT
2	500.2	0 TO 5 YEARS PAVEMENT RESTORATION TRAVERSE CUT
3	500.3	OVER 5 YEARS PAVEMENT RESTORATION LONGITUDINAL CUT, GREATER THAN 60' R.O.W
4	500.4	OVER 5 YEARS PAVEMENT RESTORATION LONGITUDINAL CUT, 60' R.O.W OR LESS
5	500.5	OVER 5 YEARS PAVEMENT RESTORATION TRAVERSE ALL R.O.W WIDTHS
6	501	TYPICAL UNDERGROUND UTILITY LOCATIONS IN RESIDENTIAL STREETS 60' OR LESS R.O.W
7	501.1	TYPICAL UTILITY UNDERGROUND LOCATIONS IN STREETS WITH GREATER THAN 60' R.O.W
8	503	METHOD B FOR RIGID AND FLEXIBLE PIPE TRENCH BACKFILL - PAVED AREAS
9	503.1	METHOD A FOR FLEXIBLE PIPE TRENCH BACKFILL - PAVED AREAS
10	503.2	METHOD A FOR RIGID PIPE TRENCH BACKFILL - PAVED AREAS
11	234	SIDEWALK
12	BACKFILL IN UNPAVED AREA AS REQUIRED BY LOCAL CODE OR AS APPROVED BY AGENCY.	

210	PLACE CONDUIT
212	PLACE HIGH DENSITY POLYETHYLENE (HDPE)
240	PLACE HANDHOLE
250	PLACE MANHOLE
270	REMOVE AND RESTORE ASPHALT
280	REMOVE AND RESTORE CONCRETE
281	REMOVE AND RESTORE SIDEWALK
282	REMOVE AND RESTORE CURBING
283	REMOVE AND RESTORE DIRT/LANDSCAPING
410	PULL CABLE
411	PULL THROUGH DUCT (INNERDUCT)
520	PLACE AERIAL CABLE
630	DIRECTIONAL BORE

MCI  
COMMUNICATIONS SERVICES, INC.  
OUTSIDE PLANT CONSTRUCTION  
HUB: LSV ALLEN - CELL SITE: LSV ALLEN BACK HAUL - 905026 - REV 12-31-19

DATE: 12/31/2019

DRAWN BY: RJOHNSON

REVISIONS

DATE	DESCRIPTION	INITIAL
12-12-19	CHANGED (2) 2" HDPE TO (2) 2.5" HDPE SHEETS 3, 8, 9	RJ
12-31-19	EXISTING CONDUIT TO BE USED INSTEAD ON SHT. 8	RJ
	<i>PK 2 19 20</i>	

EXCEPT AS MAY BE OTHERWISE PROVIDED BY CONTRACT, THESE DRAWINGS AND SPECIFICATIONS SHALL REMAIN THE PROPERTY OF MCI COMMUNICATIONS SERVICES, INC. BOTH BEING ISSUED IN STRICT CONFIDENCE AND SHALL NOT BE REPRODUCED, COPIED, OR USED FOR ANY PURPOSE WITHOUT SPECIFIC WRITTEN PERMISSION.

SCALE

HORIZONTAL: 1"=30'

VERTICAL: NA

MP TO MP

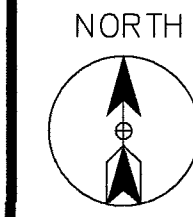
SHEET 8 OF 9

FILE: LSV ALLEN BACK HAUL - 905026 - REV 12-31-19

M:\VERTIZON ONE\FIBER\LAS VEGAS\LSV ALLEN BACK HAUL\905026 - LSV ALLEN TO LSV QUAIL VIEW\CONSTRUCTION DRAWINGS

# ROUTE SCHEMATIC

Call at least two full working days before you begin excavation.  
**811** Know what's below.  
 Call 811 before you dig.



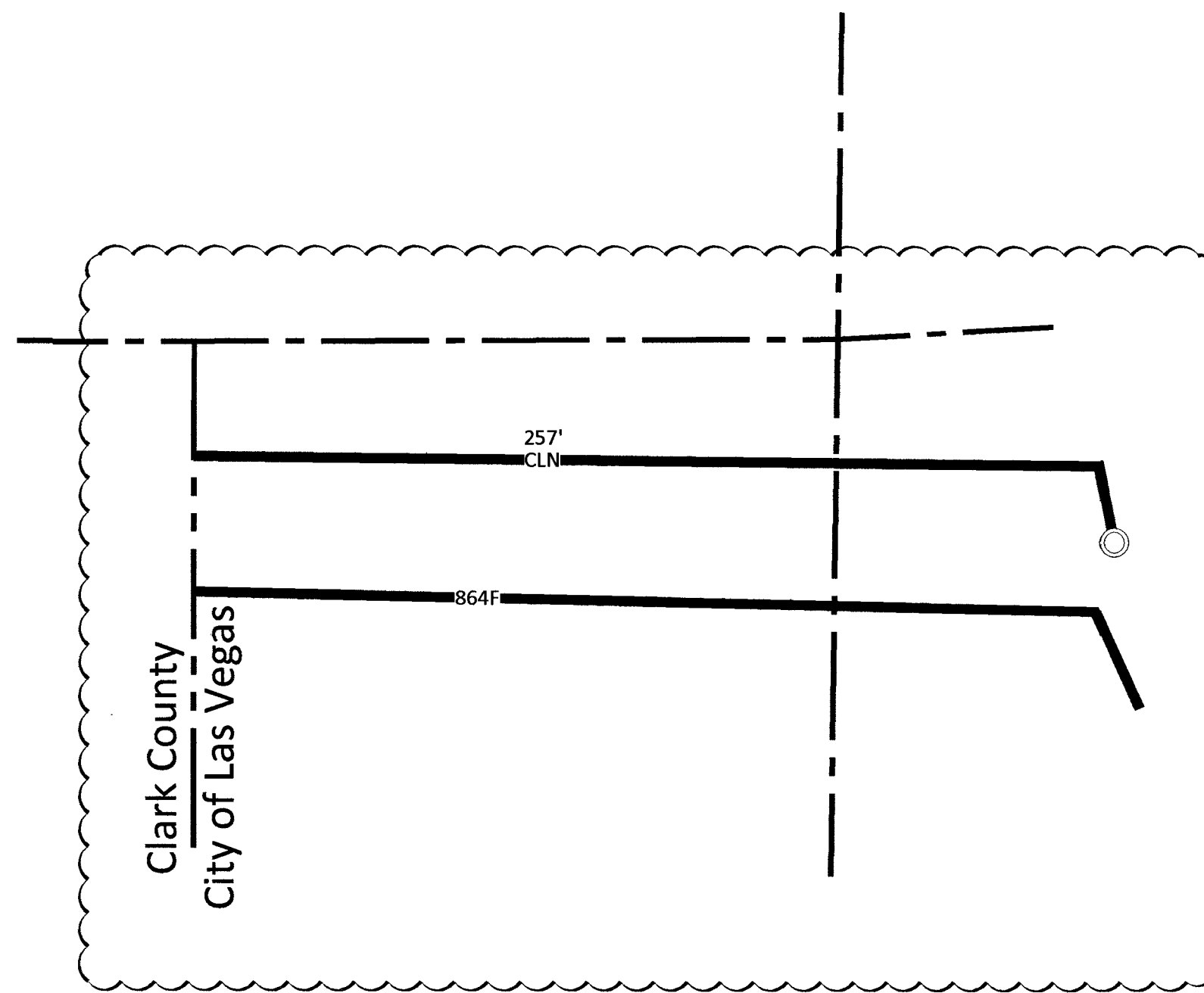
CELL SITE: LSV ALLEN BACK HAUL - 905026 - REV 12-31-19

CITY OF LAS VEGAS, NEVADA

CLARIFICATION NO. QUANTITY

FIBER TOTALS

FIBER SIZE/LENGTH: (864F/257')



MCI COMMUNICATIONS SERVICES, INC.

OUTSIDE PLANT CONSTRUCTION

HUB: LSV ALLEN - CELL SITE: LSV ALLEN BACK HAUL - 905026 - REV 12-31-19

DATE: 12/31/2019

DRAWN BY: RJOHNSON

### REVISIONS

DATE	DESCRIPTION	INITIAL
12-12-19	CHANGED (2) 2" HDPE TO (2) 2.5" HDPE SHEETS 3, 8, 9	RJ
12-31-19	EXISTING CONDUIT TO BE USED INSTEAD ON SHT. 8	RJ
	<i>RJC</i> 2 19 2	

EXCEPT AS MAY BE OTHERWISE PROVIDED BY CONTRACT, THESE DRAWINGS AND SPECIFICATIONS SHALL REMAIN THE PROPERTY OF MCI COMMUNICATIONS SERVICES, INC., BOTH BEING ISSUED IN STRICT CONFIDENCE AND SHALL NOT BE REPRODUCED, COPIED, OR USED FOR ANY PURPOSE WITHOUT SPECIFIC WRITTEN PERMISSION.

### SCALE

HORIZONTAL: 1"=30'

VERTICAL: NA

MP TO MP

SHEET 9 OF 9

FILE: LSV ALLEN BACK HAUL - 905026 - REV 12-31-19

SITE-SPAN NAME: CELL SITE: LSV ALLEN BACK HAUL - 905026 - rev 12-31-19  
 SITE-SPAN ID: 1711BOPK.1

SEGMENT	FIBER COUNT	TRENCH	BORE	DB/OT	3RD PARTY	VZ OWNED	AERIAL	TOTAL
905312	864F	.	.	.	257'	.	.	257'

*Replot*