

CONTACT SHEET/ DETAILS

MCImetro ACCESS TRANSMISSION SERVICES CORP.
d/b/a Verizon Access Transmission Services

OUTSIDE PLANT ENGINEERING:

PROJECT ENGINEER: GENYA LOCKYER
 SUPERVISOR: N/A
 MANAGER: N/A

OUTSIDE PLANT CONSTRUCTION:

PROJECT SUPERVISOR:
 FIELD CONST. SUPERINTENDENT:
 MANAGER: N/A

RIGHT-OF-WAY:

AGENT:
 MANAGER:

CONTRACTS:

COORDINATOR: N/A
 MANAGER: N/A

OTHERS:

PROGRAM MANAGER: N/A
 LIGHTWAVE ENGINEER: N/A
 CIVIL ENGINEER: N/A
 TERMINAL CONST. REP.: N/A
 SPLICING MANAGER: N/A
 TSO MANAGER: N/A

ENGINEERING CONTRACTOR

NAME OF FIRM: BPG DESIGNS 1-602-954-2223
 PROJECT MANAGER: PAM VEGA 1-602-510-7589
 ENG. PROJECT SUPERVISOR:

CONSTRUCTION CONTRACTOR

NAME OF FIRM: TEAM FISHEL 1-702-644-4565
 PROJECT COORDINATOR:

CITY GOVERNMENT

BUREAU OF ENGINEERING:

CITY ENGINEER:

UTILITIES

WORLDCOM UTILITY LOCATE 1-800-624-9675
 USA NORTH BLUESTAKE 811

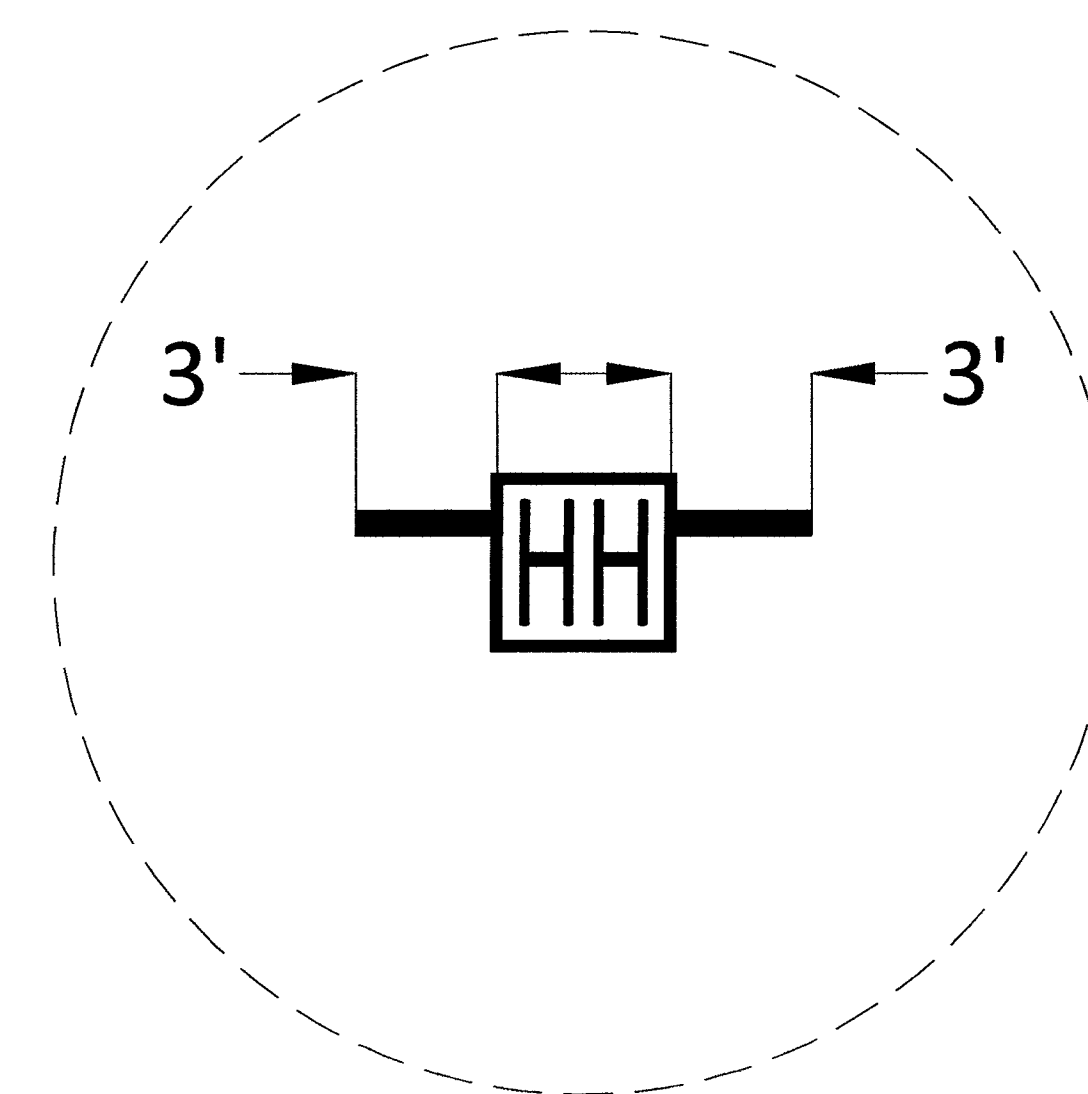
PROJECT TOTALS SUMMARY

MATERIALS

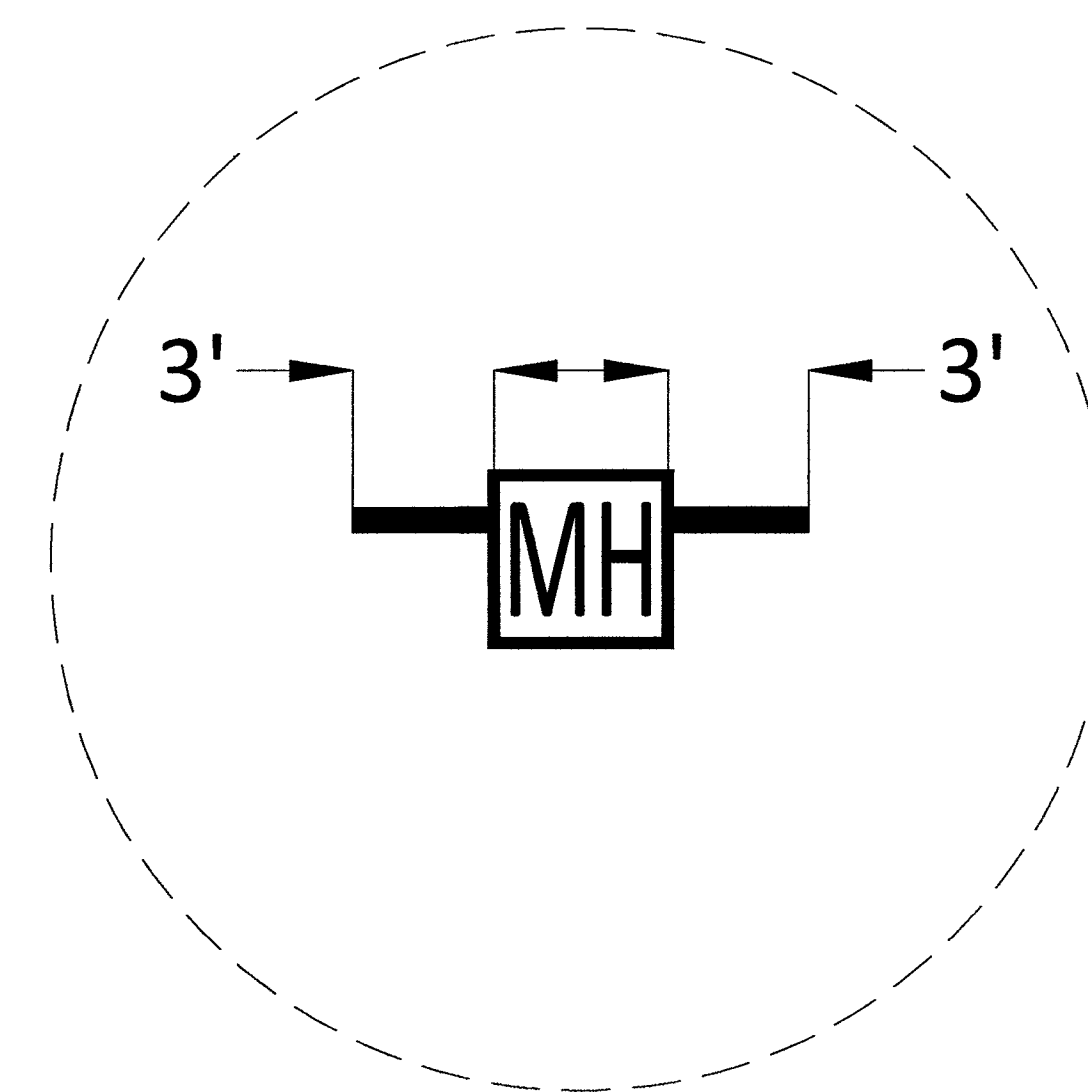
2" HDPE CONDUIT(S): 6,330'
 2.5" HDPE CONDUIT(S): -
 4" HDPE CONDUIT(S): -
 2' x 3' x 2' HANDHOLE(S): -
 2.5' x 5' x 2.5' HANDHOLE(S): 5
 4' x 4' x 4' MANHOLE(S): -

WORK TYPE

AERIAL: -
 VZW CONDUIT: -
 3RD PARTY CONDUIT: -
 TRENCH: 3,150'
 ASPHALT CUT: -
 BORE: -
 TOTAL NEW UG FOOTAGE: 3,150'
 TOTAL FOOTAGE: 3,150'



HANDHOLE DETAIL
N.T.S
2-2" STUBOUTS
ORIENTATION MAY VARY
 PLACE STUBOUTS TOWARDS BACK OF
 SIDEWALK WHERE POSSIBLE



MANHOLE DETAIL
N.T.S
2-2" STUBOUTS
ORIENTATION MAY VARY
 PLACE STUBOUTS TOWARDS BACK OF
 SIDEWALK WHERE POSSIBLE



CELL SITE: LSV WATER DISTRICT

CITY OF LAS VEGAS, NEVADA

CLARIFICATION NO. QUANTITY

MCI COMMUNICATIONS SERVICES, INC.
 OUTSIDE PLANT CONSTRUCTION
 HUB: LSV WASHINGTON DECATUR - CELL SITE: LSV WATER DISTRICT

DATE: 7/15/2019

DRAWN BY: ADADKHAH

REVISIONS

DATE	DESCRIPTION	INITIAL
07/12/2019	• Updated Index sheet (sheet 1) & footages (sheet 3) • Redesign new Underground (sheet 8, 9, 10, 11 & 12) • Updated trench details (sheet 8, 10, 11, 12) • Added trench details (sheet 9) • Updated footages (8, 9, 10, 11, 12) • Updated schematic sheet (sheet 13)	AD
		PK 9 9 15

EXCEPT AS MAY BE OTHERWISE PROVIDED BY CONTRACT, THESE DRAWINGS AND SPECIFICATIONS SHALL REMAIN THE PROPERTY OF MCI COMMUNICATIONS SERVICES, INC. BOTH BEING ISSUED IN STRICT CONFIDENCE AND SHALL NOT BE REPRODUCED, COPIED, OR USED FOR ANY PURPOSE WITHOUT SPECIFIC WRITTEN PERMISSION.

SCALE

HORIZONTAL: 1"=30'

VERTICAL: NA

MP TO MP

SHEET 3 OF 13

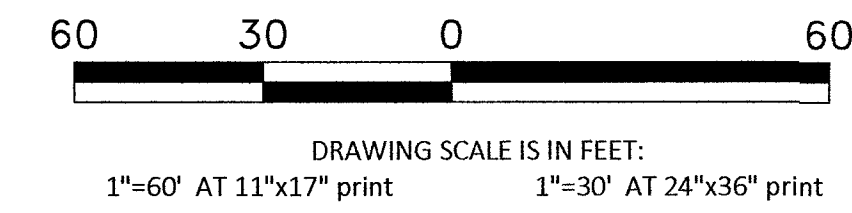
FILE: LSV WATER DISTRICT_REV 07-15-19

0 10 20 30 40 50
 DRAWING SCALE IS IN FEET:
 (1"=60' AT 11"x17" print)
 (1"=30' AT 24"x36" print)

PEPLOT

CONSTRUCTION DRAWING

CITY OF LAS VEGAS, NEVADA



Call at least two full working days before you begin excavation.

811 Know what's below. Call 811 before you dig.

CELL SITE: LSV WATER DISTRICT

CITY OF LAS VEGAS, NEVADA

CLARIFICATION NO.	QUANTITY
SHEET TOTAL	
2" HDPE CONDUIT:	1,638'
2.5" HDPE CONDUIT:	-
4" HDPE CONDUIT:	-
2' x 3' x 2' HANDHOLE(S):	-
2.5' x 5' x 2.5' HANDHOLE(S):	2
4' x 4' x 4' MANHOLE(S):	-
MANHOLE(S):	-
AERIAL:	-
VZW CONDUIT:	-
3RD PARTY CONDUIT:	-
TRENCH:	813'
TOTAL NEW UG FOOTAGE:	813'
TOTAL FOOTAGE:	813'

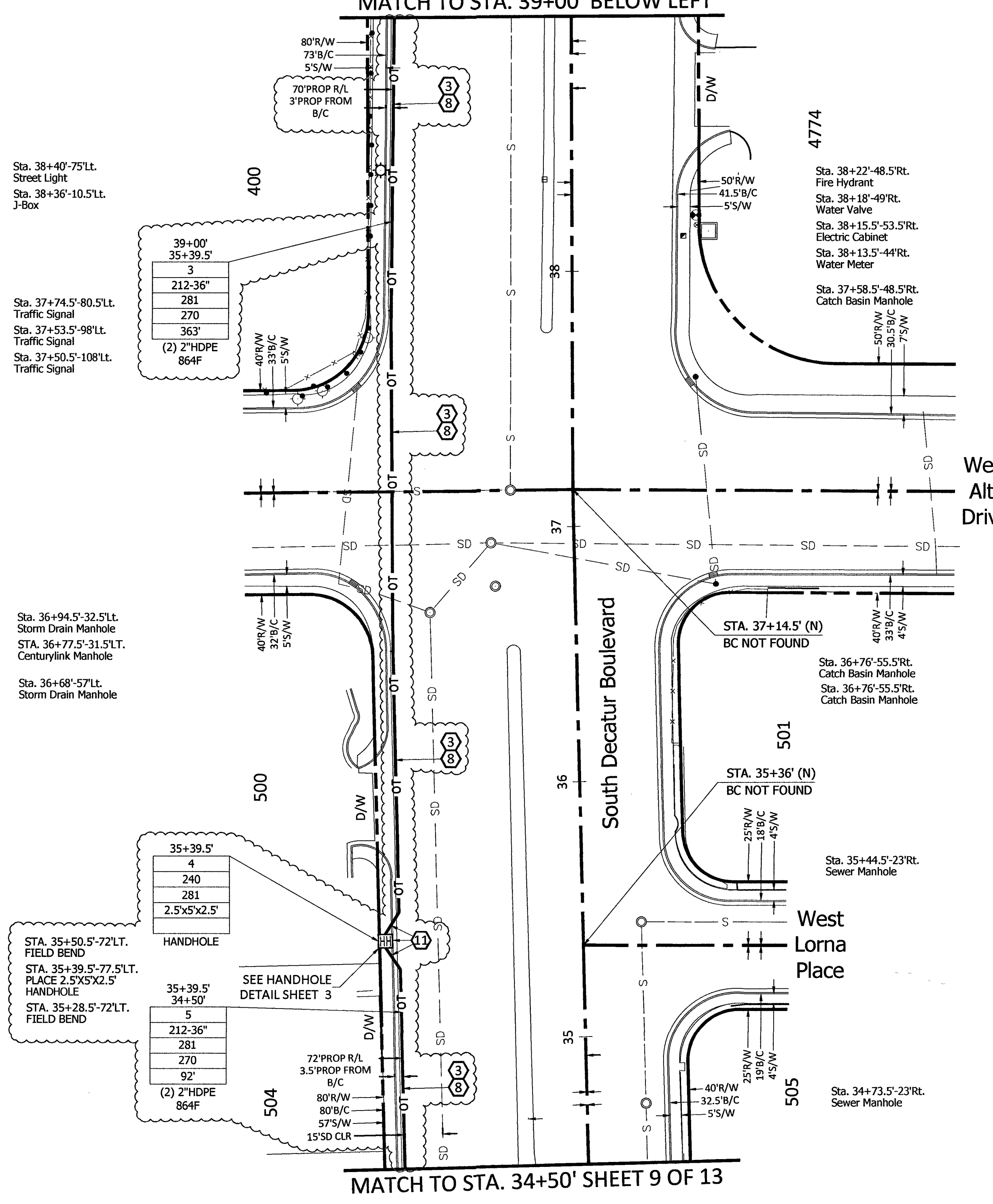
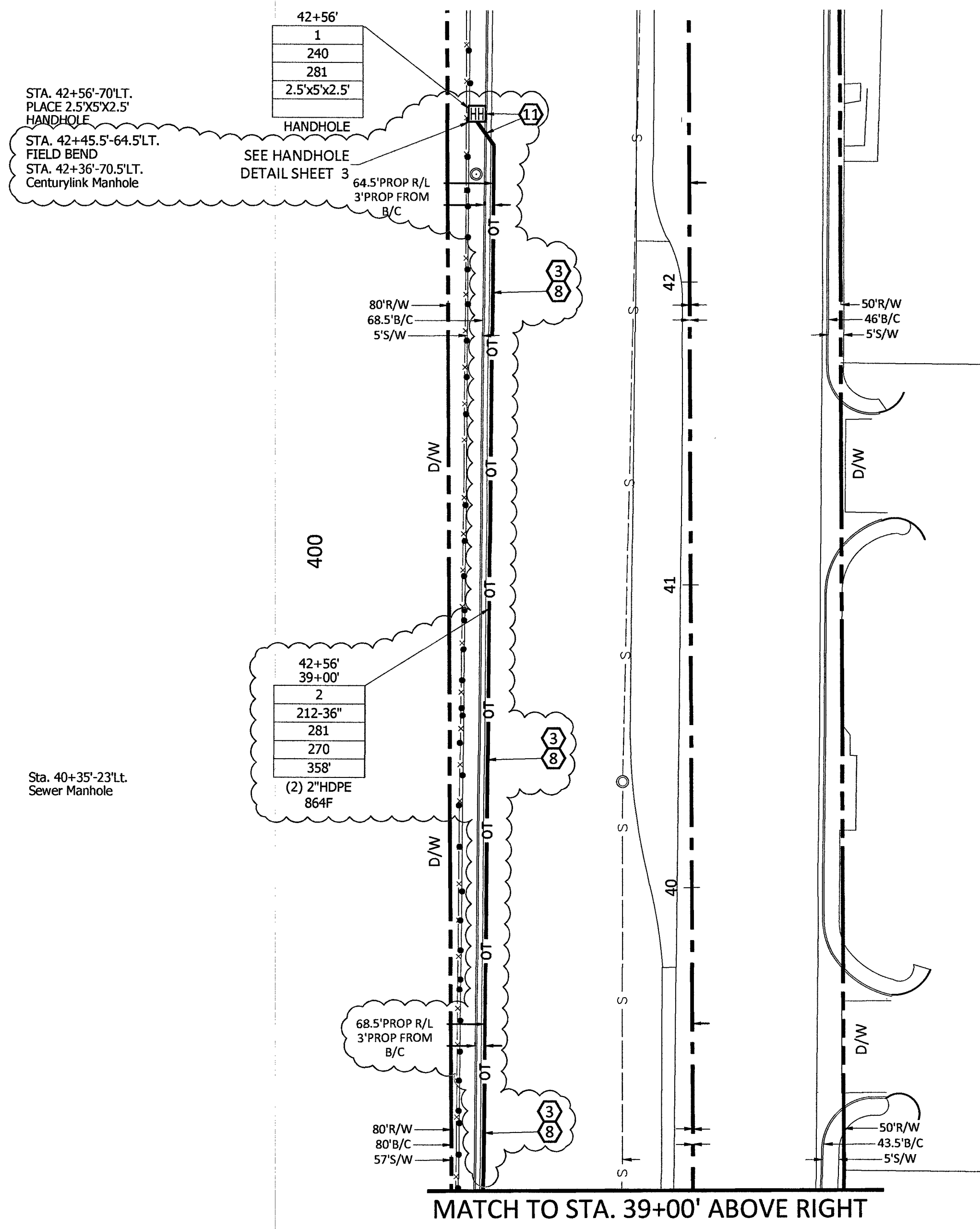
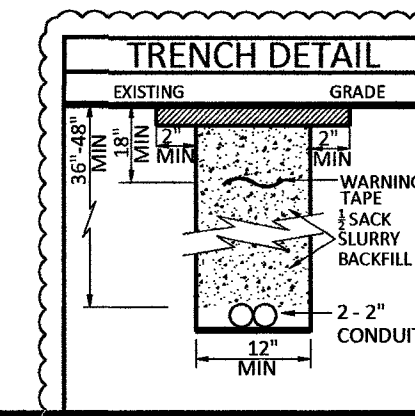
MCI COMMUNICATIONS SERVICES, INC.
 OUTSIDE PLANT CONSTRUCTION
 HUB: LSV WASHINGTON DECATUR - CELL SITE: LSV WATER DISTRICT

DATE: 7/15/2019
 DRAWN BY: ADADKHAH

REVISIONS		
DATE	DESCRIPTION	INITIAL
07/12/2019	* Updated Index sheet (sheet 1) & footages (sheet 3) * Redesign new Underground (sheet 8, 9, 10, 11 & 12) * Updated trench details (sheet 8, 10, 11, 12) * Added trench details (sheet 9) * Updated footages (8, 9, 10, 11, 12) * Updated schematic sheet (sheet 13)	AD
		RK 9 9 19

EXCEPT AS MAY BE OTHERWISE PROVIDED BY CONTRACT, THESE DRAWINGS AND SPECIFICATIONS SHALL REMAIN THE PROPERTY OF MCI COMMUNICATIONS SERVICES, INC. BOTH BEING ISSUED IN STRICT CONFIDENCE AND SHALL NOT BE REPRODUCED, COPIED, OR USED FOR ANY PURPOSE WITHOUT SPECIFIC WRITTEN PERMISSION.

SCALE
 HORIZONTAL: 1"=30'
 VERTICAL: NA
 SHEET 8 OF 13
 FILE: LSV WATER DISTRICT_REV 07-15-19



RTC NOTES:

BACKFILL AND RIGHT OF WAY RESTORATION SHALL CONFORM TO CLARK COUNTY UNIFORM STANDARD DRAWINGS

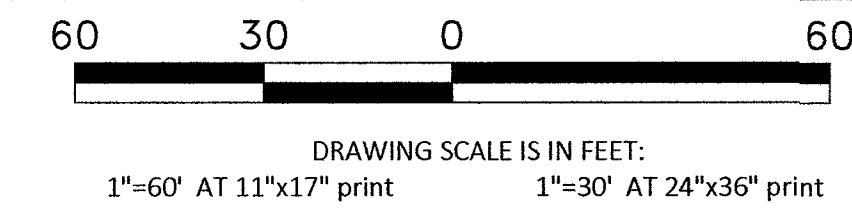
(1)	500.1	0 TO 5 YEARS PAVEMENT RESTORATION LONGITUDINAL CUT
(2)	500.2	0 TO 5 YEARS PAVEMENT RESTORATION TRAVERSE CUT
(3)	500.3	OVER 5 YEARS PAVEMENT RESTORATION LONGITUDINAL CUT, GREATER THAN 60' R.O.W
(4)	500.4	OVER 5 YEARS PAVEMENT RESTORATION LONGITUDINAL CUT, 60' R.O.W OR LESS
(5)	500.5	OVER 5 YEARS PAVEMENT RESTORATION TRAVERSE ALL R.O.W WIDTHS
(6)	501	TYPICAL UNDERGROUND UTILITY LOCATIONS IN RESIDENTIAL STREETS 60' OR LESS R.O.W
(7)	501.1	TYPICAL UTILITY UNDERGROUND LOCATIONS IN STREETS WITH GREATER THAN 60' R.O.W
(8)	503	METHOD B FOR RIGID AND FLEXIBLE PIPE TRENCH BACKFILL - PAVED AREAS
(9)	503.1	METHOD A FOR FLEXIBLE PIPE TRENCH BACKFILL - PAVED AREAS
(10)	503.2	METHOD A FOR RIGID PIPE TRENCH BACKFILL - PAVED AREAS
(11)	234	SIDEWALK
(12)		BACKFILL IN UNPAVED AREA AS REQUIRED BY LOCAL CODE OR AS APPROVED BY AGENCY.

210	PLACE CONDUIT
212	PLACE HIGH DENSITY POLYETHYLENE (HDPE)
240	PLACE HANDHOLE
250	PLACE MANHOLE
270	REMOVE AND RESTORE ASPHALT
280	REMOVE AND RESTORE CONCRETE
281	REMOVE AND RESTORE SIDEWALK
282	REMOVE AND RESTORE CURBING
283	REMOVE AND RESTORE DIRT/LANDSCAPING
410	PULL CABLE
411	PULL THROUGH DUCT (INNERDUCT)
520	PLACE AERIAL CABLE
630	DIRECTIONAL BORE

MAVERICK ONE/FIBER/LAS VEGAS/LSV WASHINGTON DECATUR/LSV WATER DISTRICT/CONSTRUCTION DRAWINGS

CONSTRUCTION DRAWING

CITY OF LAS VEGAS, NEVADA



Call at least two full working days before you begin excavation.

811 Know what's below. Call 811 before you dig.

CELL SITE: LSV WATER DISTRICT

CITY OF LAS VEGAS, NEVADA

CLARIFICATION NO.	QUANTITY
SHEET TOTAL	
2" HDPE CONDUIT:	1,612'
2.5" HDPE CONDUIT:	-
4" HDPE CONDUIT:	-
2' x 3' x 2' HANDHOLE(S):	-
2.5' x 5' x 2.5' HANDHOLE(S):	1
4' x 4' x 4' MANHOLE(S):	-
MANHOLE(S):	-
AERIAL:	-
VZW CONDUIT:	-
3RD PARTY CONDUIT:	-
TRENCH:	803'
TOTAL NEW UG FOOTAGE:	803'
TOTAL FOOTAGE:	803'

MCI COMMUNICATIONS SERVICES, INC.
 OUTSIDE PLANT CONSTRUCTION
 HUB: LSV WASHINGTON DECATUR - CELL SITE: LSV WATER DISTRICT

DATE: 7/15/2019

DRAWN BY: ADADKHAH

REVISIONS

DATE	DESCRIPTION	INITIAL
07/12/2019	<ul style="list-style-type: none"> Updated Index sheet (sheet 1) & footages (sheet 3) Redesign new underground (sheet 8, 9, 10, 11 & 12) Updated trench details (sheet 8, 10, 11, 12) Added trench details (sheet 9) Updated footages (8, 9, 10, 11, 12) Updated schematic sheet (sheet 13) 	AD
PK 9 9 19		

EXCEPT AS MAY BE OTHERWISE PROVIDED BY CONTRACT, THESE DRAWINGS AND SPECIFICATIONS SHALL REMAIN THE PROPERTY OF MCI COMMUNICATIONS SERVICES, INC., BOTH BEING ISSUED IN STRICT CONFIDENCE AND SHALL NOT BE REPRODUCED, COPIED, OR USED FOR ANY PURPOSE WITHOUT SPECIFIC WRITTEN PERMISSION.

SCALE

HORIZONTAL: 1"=30'

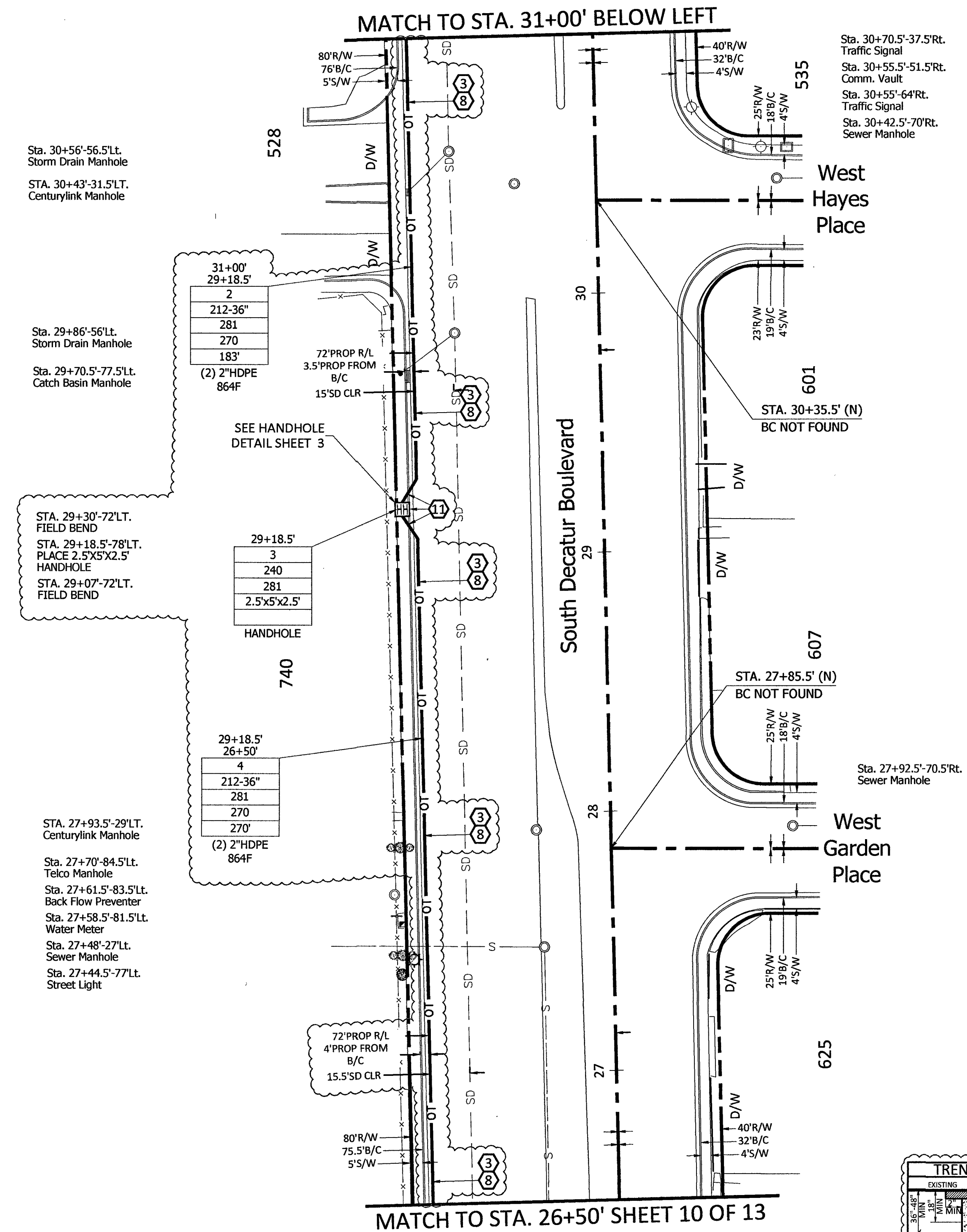
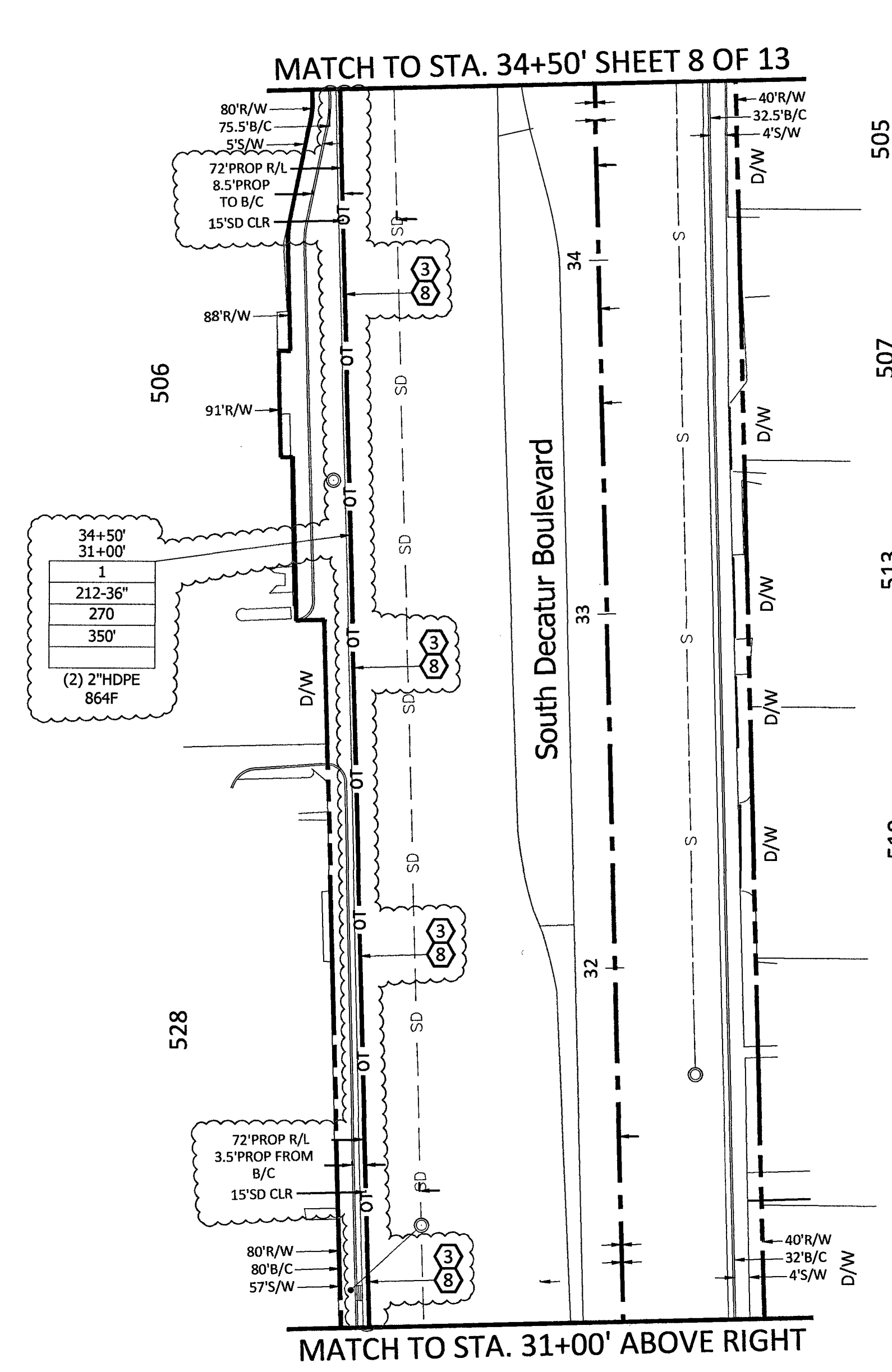
VERTICAL: NA

MP TO MP

SHEET 9 OF 13

FILE: LSV WATER DISTRICT_REV

07-15-19

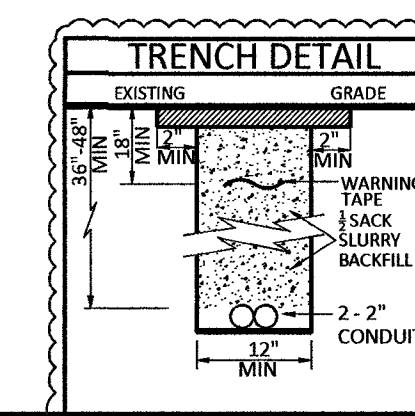


RTC NOTES:

BACKFILL AND RIGHT OF WAY RESTORATION SHALL CONFORM TO CLARK COUNTY UNIFORM STANDARD DRAWINGS

(1)	500.1	0 TO 5 YEARS PAVEMENT RESTORATION LONGITUDINAL CUT
(2)	500.2	0 TO 5 YEARS PAVEMENT RESTORATION TRAVERSE CUT
(3)	500.3	OVER 5 YEARS PAVEMENT RESTORATION LONGITUDINAL CUT, GREATER THAN 60' R.O.W
(4)	500.4	OVER 5 YEARS PAVEMENT RESTORATION LONGITUDINAL CUT, 60' R.O.W OR LESS
(5)	500.5	OVER 5 YEARS PAVEMENT RESTORATION TRAVERSE ALL R.O.W WIDTHS
(6)	501	TYPICAL UNDERGROUND UTILITY LOCATIONS IN RESIDENTIAL STREETS 60' OR LESS R.O.W
(7)	501.1	TYPICAL UTILITY UNDERGROUND LOCATIONS IN STREETS WITH GREATER THAN 60' R.O.W
(8)	503	METHOD B FOR RIGID AND FLEXIBLE PIPE TRENCH BACKFILL - PAVED AREAS
(9)	503.1	METHOD A FOR FLEXIBLE PIPE TRENCH BACKFILL - PAVED AREAS
(10)	503.2	METHOD A FOR RIGID PIPE TRENCH BACKFILL - PAVED AREAS
(11)	234	SIDEWALK
(12)		BACKFILL IN UNPAVED AREA AS REQUIRED BY LOCAL CODE OR AS APPROVED BY AGENCY.

210	PLACE CONDUIT
212	PLACE HIGH DENSITY POLYETHYLENE (HDPE)
240	PLACE HANDHOLE
250	PLACE MANHOLE
270	REMOVE AND RESTORE ASPHALT
280	REMOVE AND RESTORE CONCRETE
281	REMOVE AND RESTORE SIDEWALK
282	REMOVE AND RESTORE CURBING
283	REMOVE AND RESTORE DIRT/LANDSCAPING
410	PULL CABLE
411	PULL THROUGH DUCT (INNERDUCT)
520	PLACE AERIAL CABLE
630	DIRECTIONAL BORE



M:\VERSION ONE\FIBER\LAS VEGAS\LSV WASHINGTON DECATUR\LSV WATER DISTRICT\CONSTRUCTION DRAWINGS

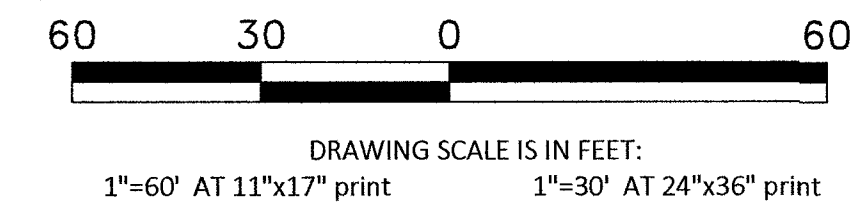
RTC NOTES:

BACKFILL AND RIGHT OF WAY RESTORATION SHALL CONFORM TO CLARK COUNTY UNIFORM STANDARD DRAWINGS

1	500.1	0 TO 5 YEARS PAVEMENT RESTORATION LONGITUDINAL CUT
2	500.2	0 TO 5 YEARS PAVEMENT RESTORATION TRAVERSE CUT
3	500.3	OVER 5 YEARS PAVEMENT RESTORATION LONGITUDINAL CUT. GREATER THAN 60' R.O.W
4	500.4	OVER 5 YEARS PAVEMENT RESTORATION LONGITUDINAL CUT. 60' R.O.W OR LESS
5	500.5	OVER 5 YEARS PAVEMENT RESTORATION TRAVERSE ALL R.O.W WIDTHS
6	501	TYPICAL UNDERGROUND UTILITY LOCATIONS IN RESIDENTIAL STREETS 60' OR LESS R.O.W
7	501.1	TYPICAL UTILITY UNDERGROUND LOCATIONS IN STREETS WITH GREATER THAN 60' R.O.W
8	503	METHOD B FOR RIGID AND FLEXIBLE PIPE TRENCH BACKFILL - PAVED AREAS
9	503.1	METHOD A FOR FLEXIBLE PIPE TRENCH BACKFILL - PAVED AREAS
10	503.2	METHOD A FOR RIGID PIPE TRENCH BACKFILL - PAVED AREAS
11	234	SIDEWALK
12		BACKFILL IN UNPAVED AREA AS REQUIRED BY LOCAL CODE OR AS APPROVED BY AGENCY.

CONSTRUCTION DRAWING

CITY OF LAS VEGAS, NEVADA



Call at least two full working days before you begin excavation.



Know what's below. Call 811 before you dig.

- 210 PLACE CONDUIT
- 212 PLACE HIGH DENSITY POLYETHYLENE (HDPE)
- 240 PLACE HANDHOLE
- 250 PLACE MANHOLE
- 270 REMOVE AND RESTORE ASPHALT
- 280 REMOVE AND RESTORE CONCRETE
- 281 REMOVE AND RESTORE SIDEWALK
- 282 REMOVE AND RESTORE CURBING
- 283 REMOVE AND RESTORE DIRT/LANDSCAPING
- 410 PULL CABLE
- 411 PULL THROUGH DUCT (INNERDUCT)
- 520 PLACE AERIAL CABLE
- 630 DIRECTIONAL BORE

Sta. 25+90'-77\"/>

Sta. 25+23.5'-90\"/>

Sta. 24+57'-80.5\"/>

Sta. 24+53'-80.5\"/>

Sta. 24+35.5'-116.5\"/>

Sta. 24+33'-54\"/>

Sta. 24+15.5'-98\"/>

Sta. 24+15'-41\"/>

Sta. 24+07.5'-88.5\"/>

Sta. 23+87.5'-110.5\"/>

Sta. 23+74'-29\"/>

Sta. 23+67.5'-76.5\"/>

Sta. 23+63'-77.5\"/>

Sta. 23+63'-80.5\"/>

Sta. 23+59.5'-76\"/>

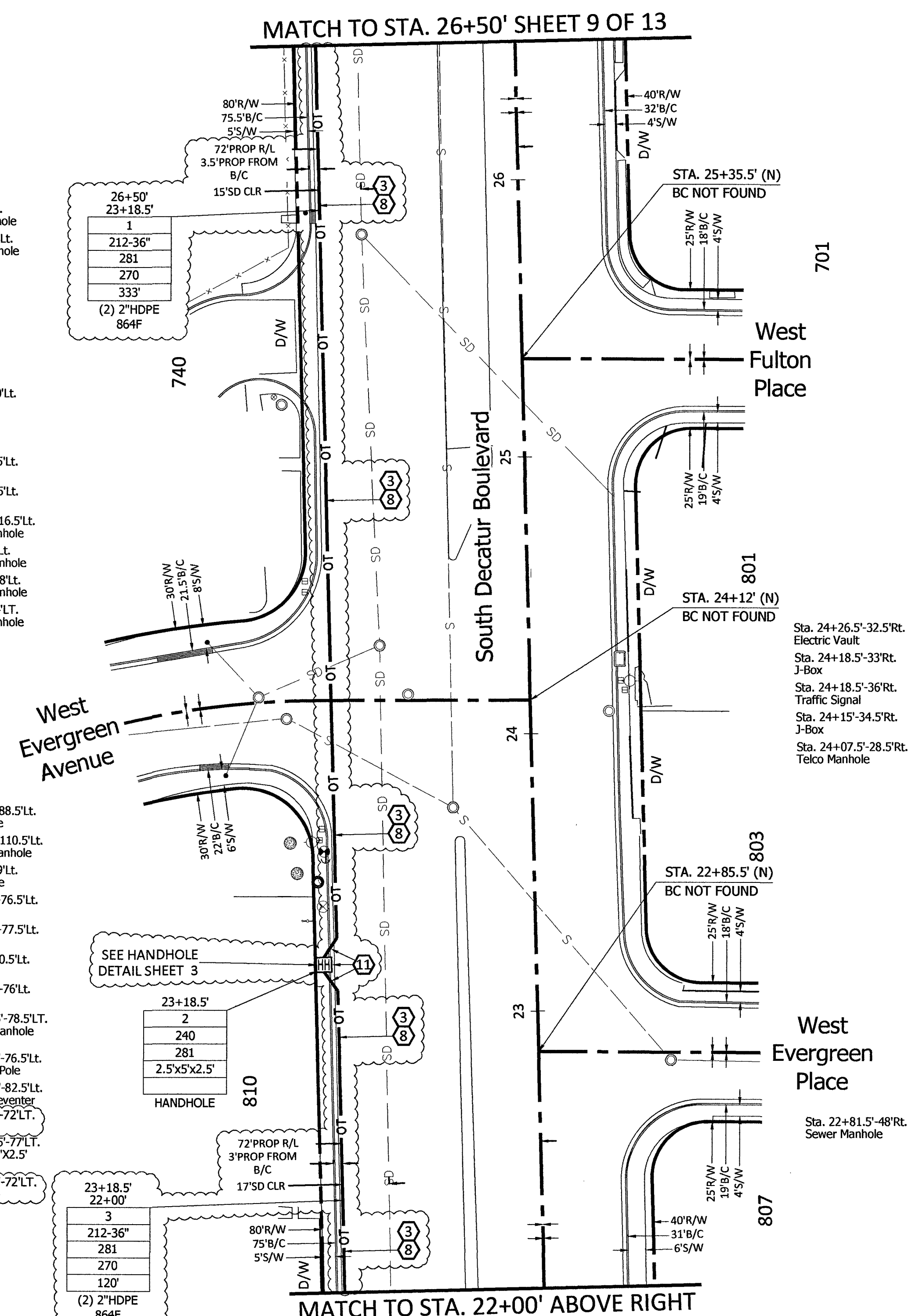
Sta. 23+39.5'-76.5\"/>

Sta. 23+34.5'-82.5\"/>

Sta. 23+28'-72\"/>

Sta. 23+18.5'-77\"/>

Sta. 23+09'-72\"/>



Sta. 20+36'-56.5\"/>

Sta. 20+11'-77\"/>

Sta. 24+26.5'-32.5\"/>

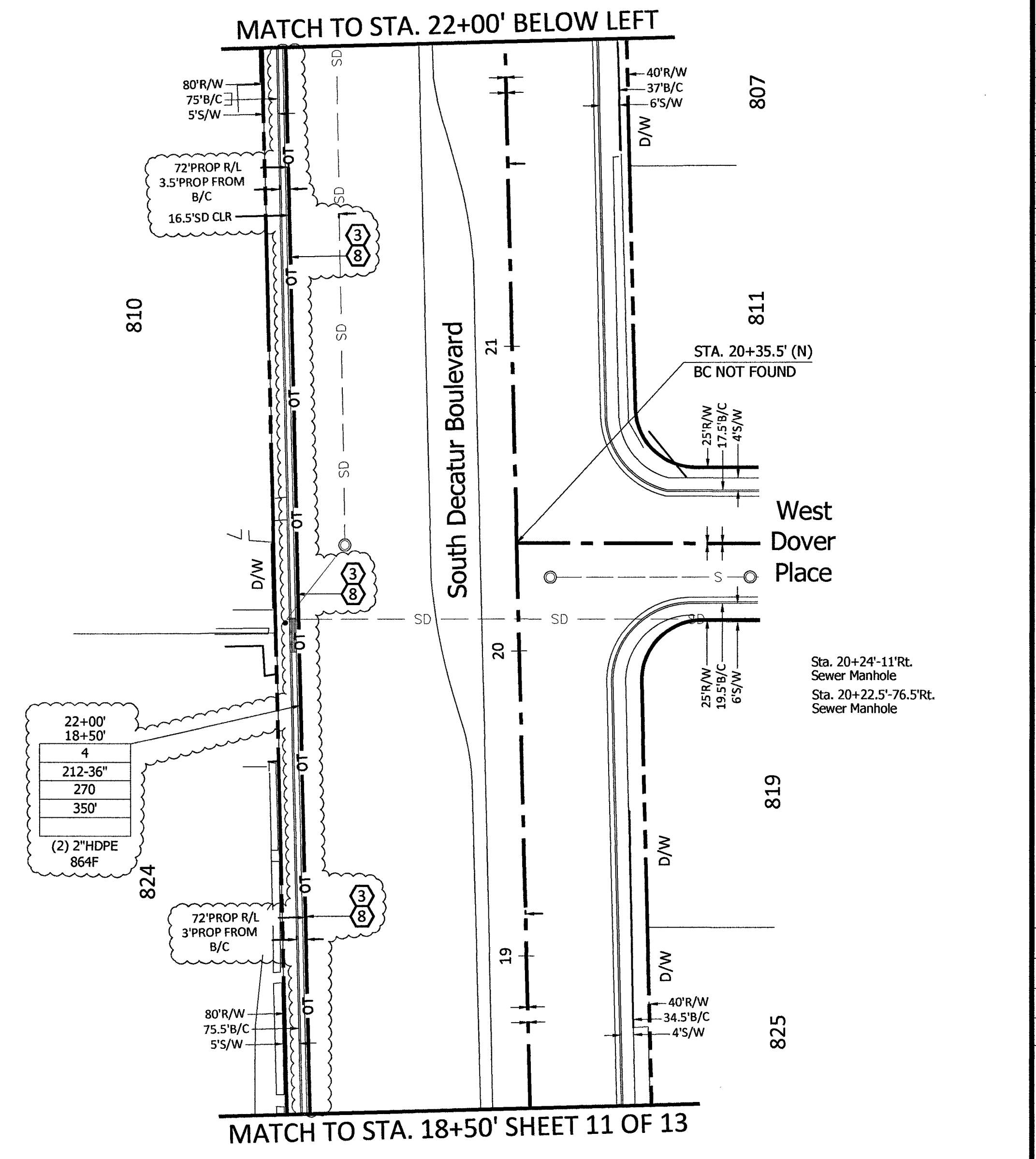
Sta. 24+18.5'-33\"/>

Sta. 24+18.5'-36\"/>

Sta. 24+15'-34.5\"/>

Sta. 24+07.5'-28.5\"/>

Sta. 22+81.5'-48\"/>



CELL SITE: LSV WATER DISTRICT

CITY OF LAS VEGAS, NEVADA

CLARIFICATION NO. QUANTITY

SHEET TOTAL	
2" HDPE CONDUIT:	1,612'
2.5" HDPE CONDUIT:	-
4" HDPE CONDUIT:	-
2' x 3' x 2' HANDHOLE(S):	-
2.5' x 5' x 2.5' HANDHOLE(S):	1
4' x 4' x 4' MANHOLE(S):	-
MANHOLE(S):	-
AERIAL:	-
VZW CONDUIT:	-
3RD PARTY CONDUIT:	-
TRENCH:	803'
TOTAL NEW UG FOOTAGE:	803'
TOTAL FOOTAGE:	803'

MCI COMMUNICATIONS SERVICES, INC.
OUTSIDE PLANT CONSTRUCTION
HUB: LSV WASHINGTON DECATUR - CELL SITE: LSV WATER DISTRICT

DATE: 7/15/2019

DRAWN BY: ADADKHAH

REVISIONS

DATE	DESCRIPTION	INITIAL
07/12/2019	<ul style="list-style-type: none"> • Updated Index sheet (sheet 1) & footages (sheet 3) • Redesign new Underground (sheet 8, 9, 10, 11 & 12) • Updated trench details (sheet 8, 10, 11, 12) • Added trench details (sheet 9) • Updated footages (8, 9, 10, 11, 12) • Updated schematic sheet (sheet 13) 	AD

EXCEPT AS MAY BE OTHERWISE PROVIDED BY CONTRACT, THESE DRAWINGS AND SPECIFICATIONS SHALL REMAIN THE PROPERTY OF MCI COMMUNICATIONS SERVICES, INC. BOTH BEING ISSUED IN STRICT CONFIDENCE AND SHALL NOT BE REPRODUCED, COPIED, OR USED FOR ANY PURPOSE WITHOUT SPECIFIC WRITTEN PERMISSION.

SCALE

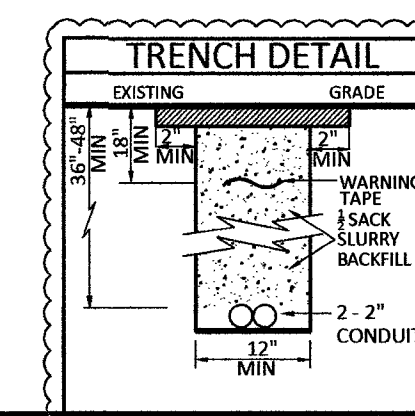
HORIZONTAL: 1"=30'

VERTICAL: NA

MP TO MP

SHEET 10 OF 13

FILE: LSV WATER DISTRICT_REV 07-15-19



RELOT

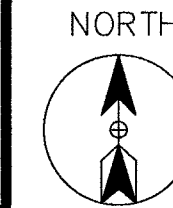
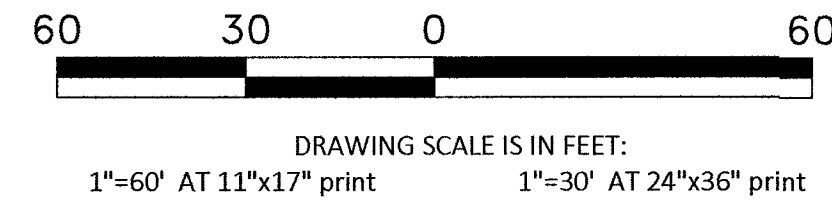
RTC NOTES:

BACKFILL AND RIGHT OF WAY RESTORATION SHALL CONFORM TO CLARK COUNTY UNIFORM STANDARD DRAWINGS

500.1	0 TO 5 YEARS PAVEMENT RESTORATION LONGITUDINAL CUT
500.2	0 TO 5 YEARS PAVEMENT RESTORATION TRAVERSE CUT
500.3	OVER 5 YEARS PAVEMENT RESTORATION LONGITUDINAL CUT, GREATER THAN 60' R.O.W
500.4	OVER 5 YEARS PAVEMENT RESTORATION LONGITUDINAL CUT, 60' R.O.W OR LESS
500.5	OVER 5 YEARS PAVEMENT RESTORATION TRAVERSE ALL R.O.W WIDTHS
501	TYPICAL UNDERGROUND UTILITY LOCATIONS IN RESIDENTIAL STREETS 60' OR LESS R.O.W
501.1	TYPICAL UTILITY UNDERGROUND LOCATIONS IN STREETS WITH GREATER THAN 60' R.O.W
503	METHOD B FOR RIGID AND FLEXIBLE PIPE TRENCH BACKFILL - PAVED AREAS
503.1	METHOD A FOR FLEXIBLE PIPE TRENCH BACKFILL - PAVED AREAS
503.2	METHOD A FOR RIGID PIPE TRENCH BACKFILL - PAVED AREAS
Z34	SIDEWALK
12	BACKFILL IN UNPAVED AREA AS REQUIRED BY LOCAL CODE OR AS APPROVED BY AGENCY.

CONSTRUCTION DRAWING

CITY OF LAS VEGAS, NEVADA



Call at least two full working days before you begin excavation.

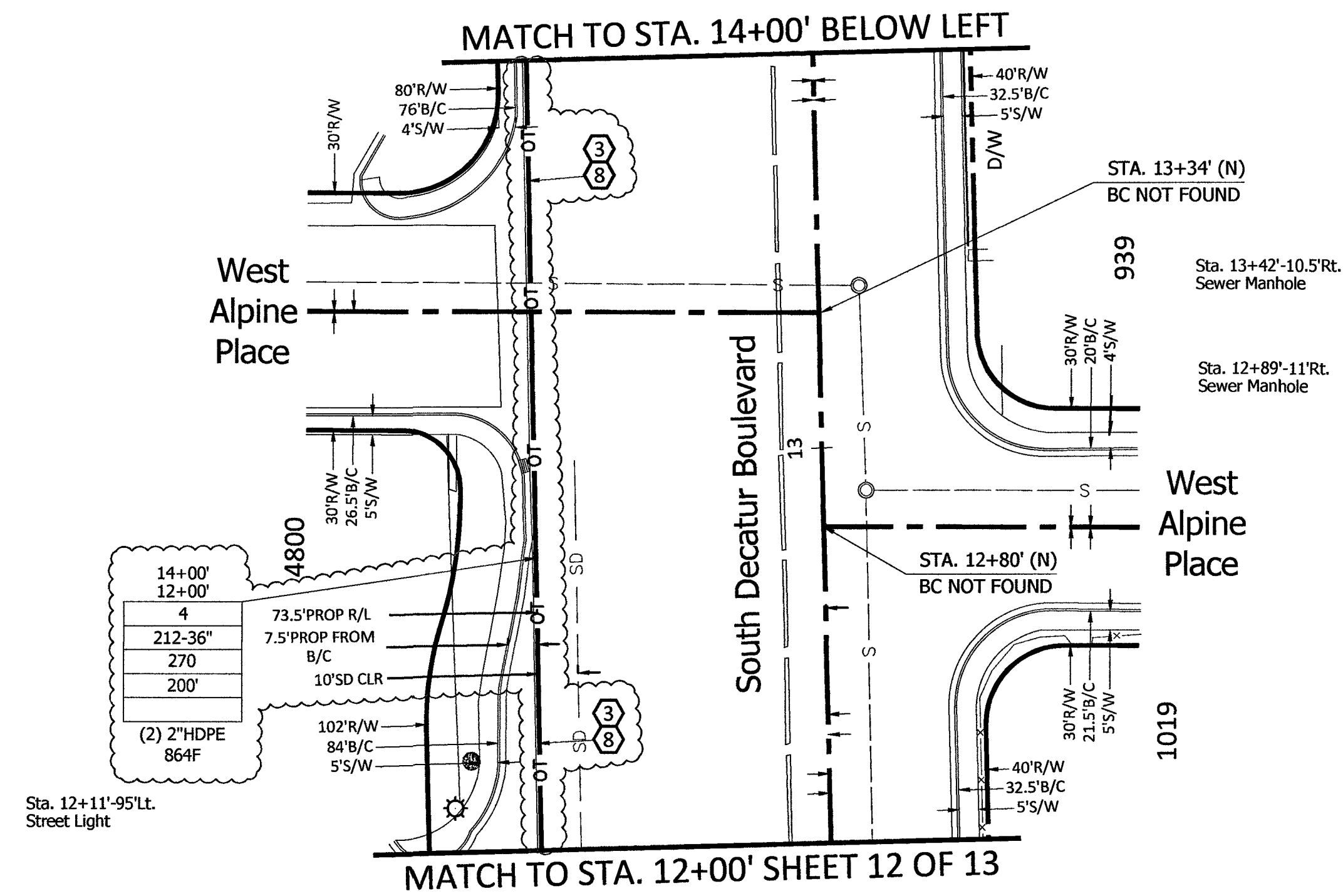
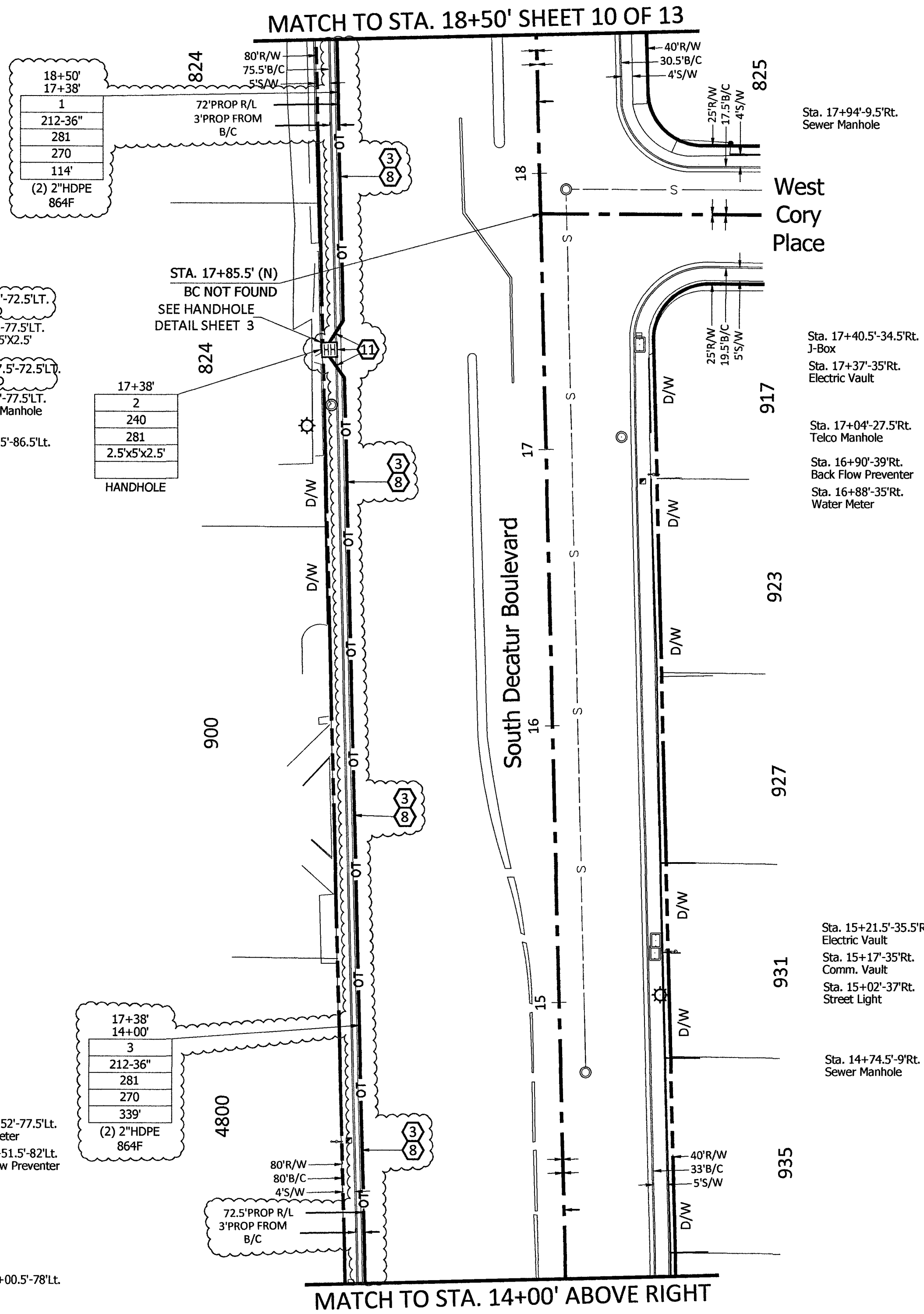


CELL SITE: LSV WATER DISTRICT

CITY OF LAS VEGAS, NEVADA

CLARIFICATION NO.	QUANTITY
SHEET TOTAL	
2" HDPE CONDUIT:	1,312'
2.5" HDPE CONDUIT:	-
4" HDPE CONDUIT:	-
2' x 3' x 2' HANDHOLE(S):	-
2.5' x 5' x 2.5' HANDHOLE(S):	1
4' x 4' x 4' MANHOLE(S):	-
MANHOLE(S):	-
AERIAL:	-
VZW CONDUIT:	-
3RD PARTY CONDUIT:	-
TRENCH:	653'
TOTAL NEW UG FOOTAGE:	653'
TOTAL FOOTAGE:	653'

- 210 PLACE CONDUIT
- 212 PLACE HIGH DENSITY POLYETHYLENE (HDPE)
- 240 PLACE HANDHOLE
- 250 PLACE MANHOLE
- 270 REMOVE AND RESTORE ASPHALT
- 280 REMOVE AND RESTORE CONCRETE
- 281 REMOVE AND RESTORE SIDEWALK
- 282 REMOVE AND RESTORE CURBING
- 283 REMOVE AND RESTORE DIRT/LANDSCAPING
- 410 PULL CABLE
- 411 PULL THROUGH DUCT (INNERDUCT)
- 520 PLACE AERIAL CABLE
- 630 DIRECTIONAL BORE



MCI
COMMUNICATIONS SERVICES, INC.
OUTSIDE PLANT CONSTRUCTION
HUB: LSV WASHINGTON DECATUR - CELL SITE: LSV WATER DISTRICT

DATE: 7/15/2019

DRAWN BY: ADADKHAH

REVISIONS

DATE	DESCRIPTION	INITIAL
07/12/2019	<ul style="list-style-type: none"> + Updated Index sheet (sheet 1) & footages (sheet 3) + Redesign new Underground (sheet 8, 9, 10, 11 & 12) + Updated trench details (sheet 8, 10, 11, 12) + Added trench details (sheet 9) + Updated footages (8, 9, 10, 11, 12) + Updated schematic sheet (sheet 13) 	AD
		PK 9919

EXCEPT AS MAY BE OTHERWISE PROVIDED BY CONTRACT, THESE DRAWINGS AND SPECIFICATIONS SHALL REMAIN THE PROPERTY OF MCI COMMUNICATIONS SERVICES, INC. BOTH BEING ISSUED IN STRICT CONFIDENCE AND SHALL NOT BE REPRODUCED, COPIED, OR USED FOR ANY PURPOSE WITHOUT SPECIFIC WRITTEN PERMISSION.

SCALE

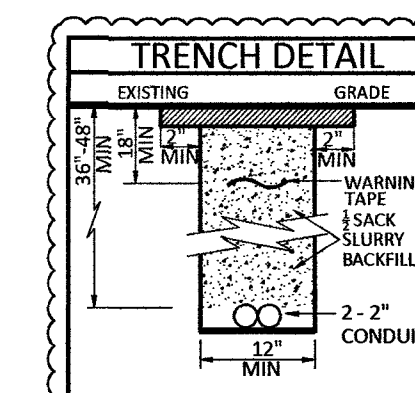
HORIZONTAL: 1"=30'

VERTICAL: NA

MP TO MP

SHEET 11 OF 13

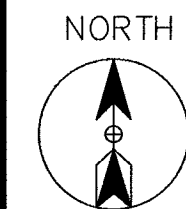
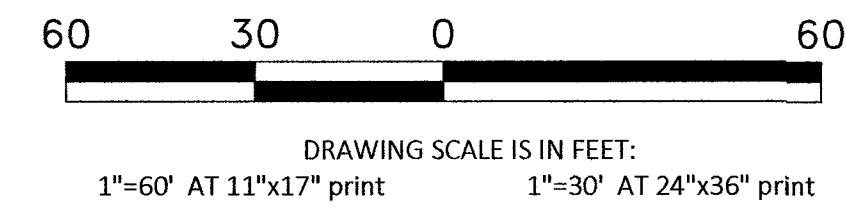
FILE: LSV WATER DISTRICT_REV 07-15-19



REPlot

CONSTRUCTION DRAWING

CITY OF LAS VEGAS, NEVADA



CELL SITE: LSV WATER DISTRICT

CITY OF LAS VEGAS, NEVADA

CLARIFICATION NO.	QUANTITY
SHEET TOTAL	
2" HDPE CONDUIT:	156'
2.5" HDPE CONDUIT:	-
4" HDPE CONDUIT:	-
2' x 3' x 2' HANDHOLE(S):	-
2.5' x 5' x 2.5' HANDHOLE(S):	-
4' x 4' x 4' MANHOLE(S):	-
AERIAL:	-
VZW CONDUIT:	-
3RD PARTY CONDUIT:	-
TRENCH:	78'
BORE:	-
TOTAL NEW UG FOOTAGE:	78'
TOTAL FOOTAGE:	78'

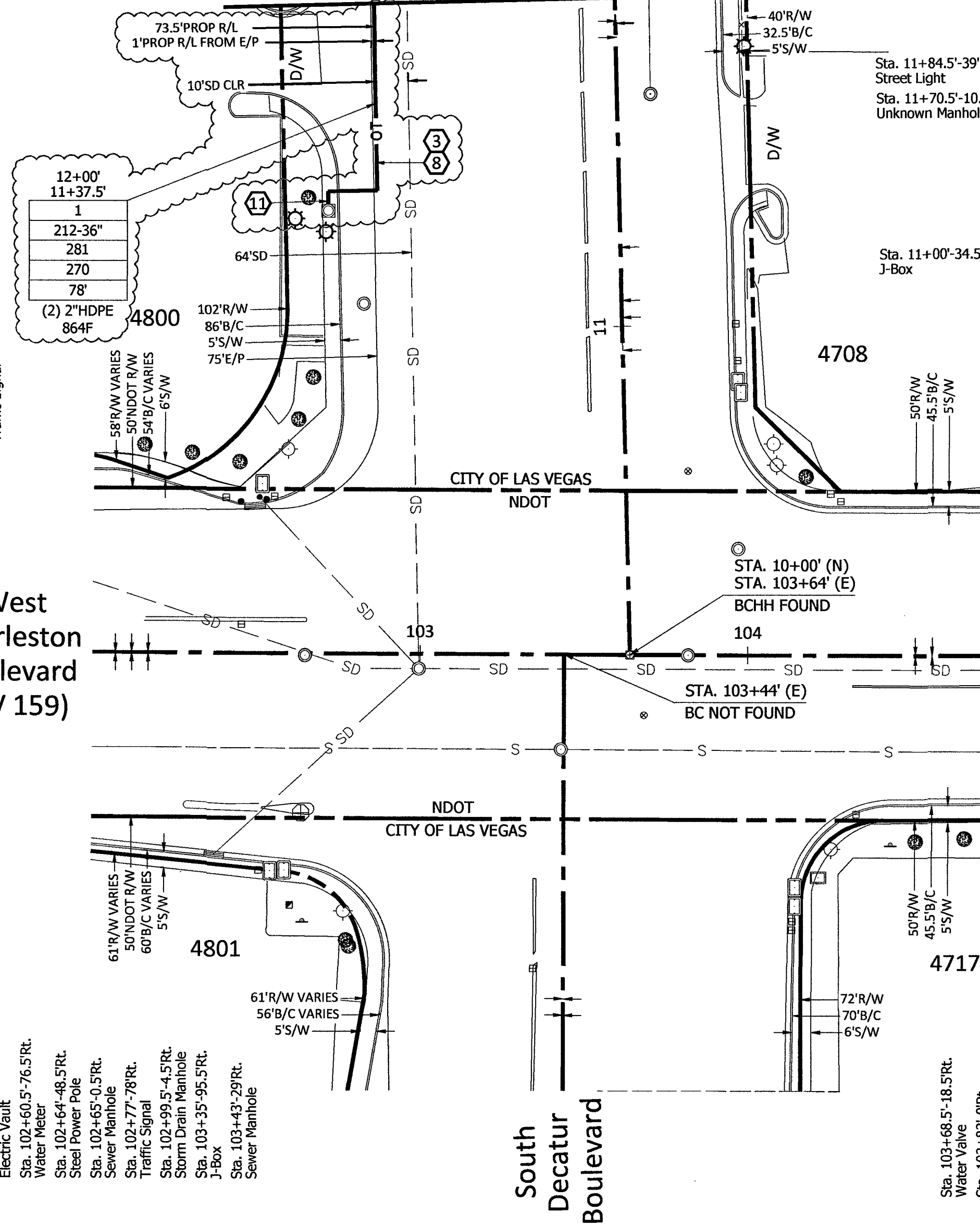
Call at least two full working days before you begin excavation.

811 Know what's below. Call 811 before you dig.

MATCH TO STA. 12+00' SHEET 11 OF 13

STA. 11+43'-88.5'LT.
90° BEND
STA. 11+43'-74'LT.
90° BEND
STA. 11+37.5'-89'LT.
TIE TO EXISTING
MCI MANHOLE
Sta. 11+35'-99'LT.
Street Light
Sta. 11+31'-89.5'LT.
Street Light
STA. 11+08.5'-78.5'LT.
Centurylink Manhole

Sta. 102+40.5'-47.5'LT.
J-Box
Sta. 102+45.5'-9'LT.
J-Box
Sta. 102+51'-47.5'LT.
Catch Basin Manhole
Sta. 102+51.5'-51.5'LT.
Electric Vault
Sta. 102+55.5'-48'LT.
J-Box
Sta. 103+59.5'-62'LT.
Traffic Signal



Sta. 102+51'-66'RT.
J-Box
Sta. 102+54.5'-66'RT.
Comm. Vault
Sta. 102+59'-66'RT.
Electric Vault
Sta. 102+60.5'-76.5'RT.
Water Meter
Sta. 102+64'-48.5'RT.
Steel Power Pole
Sta. 102+65'-40.5'RT.
Sewer Manhole
Sta. 102+77'-78'RT.
Traffic Signal
Sta. 102+99.5'-4.5'RT.
Storm Drain Manhole
Sta. 103+35'-95.5'RT.
J-Box
Sta. 103+43'-29'RT.
Sewer Manhole

Sta. 103+68.5'-18.5'RT.
Water Valve
Sta. 103+82'-0'RT.
Sewer Manhole
Sta. 104+13.5'-83.5'RT.
J-Box
Sta. 104+14'-81'RT.
J-Box
Sta. 104+14.5'-76'RT.
Electric Vault

RTC NOTES:

BACKFILL AND RIGHT OF WAY RESTORATION SHALL CONFORM TO CLARK COUNTY UNIFORM STANDARD DRAWINGS

1	500.1	0 TO 5 YEARS PAVEMENT RESTORATION LONGITUDINAL CUT
2	500.2	0 TO 5 YEARS PAVEMENT RESTORATION TRANSVERSE CUT
3	500.3	OVER 5 YEARS PAVEMENT RESTORATION LONGITUDINAL CUT, GREATER THAN 60' R.O.W
4	500.4	OVER 5 YEARS PAVEMENT RESTORATION LONGITUDINAL CUT, 60' R.O.W OR LESS
5	500.5	OVER 5 YEARS PAVEMENT RESTORATION TRANSVERSE ALL R.O.W WIDTHS
6	501	TYPICAL UNDERGROUND UTILITY LOCATIONS IN RESIDENTIAL STREETS 60' OR LESS R.O.W
7	501.1	TYPICAL UTILITY UNDERGROUND LOCATIONS IN STREETS WITH GREATER THAN 60' R.O.W
8	503	METHOD B FOR RIGID AND FLEXIBLE PIPE TRENCH BACKFILL - PAVED AREAS
9	503.1	METHOD A FOR FLEXIBLE PIPE TRENCH BACKFILL - PAVED AREAS
10	503.2	METHOD A FOR RIGID PIPE TRENCH BACKFILL - PAVED AREAS
11	234	SIDEWALK
12		BACKFILL IN UNPAVED AREA AS REQUIRED BY LOCAL CODE OR AS APPROVED BY AGENCY.

- 210 PLACE CONDUIT
- 212 PLACE HIGH DENSITY POLYETHYLENE (HDPE)
- 240 PLACE HANDHOLE
- 250 PLACE MANHOLE
- 270 REMOVE AND RESTORE ASPHALT
- 280 REMOVE AND RESTORE CONCRETE
- 281 REMOVE AND RESTORE SIDEWALK
- 282 REMOVE AND RESTORE CURBING
- 283 REMOVE AND RESTORE DIRT/LANDSCAPING
- 410 PULL CABLE
- 411 PULL THROUGH DUCT (INNERDUCT)
- 520 PLACE AERIAL CABLE
- 630 DIRECTIONAL BORE

DATE: 7/15/2019

DRAWN BY: ADADKHAH

REVISIONS

DATE	DESCRIPTION	INITIAL
07/12/2019	+ Updated Index sheet (sheet 1) & footages (sheet 3) + Redesign new Underground (sheet 8, 9, 10, 11 & 12) + Updated trench details (sheet 8, 10, 11, 12) + Added trench details (sheet 9) + Updated footages (8, 9, 10, 11, 12) + Updated schematic sheet (sheet 13)	AD
		RK 9 9 19

EXCEPT AS MAY BE OTHERWISE PROVIDED BY CONTRACT, THESE DRAWINGS AND SPECIFICATIONS SHALL REMAIN THE PROPERTY OF MCI COMMUNICATIONS SERVICES, INC., BOTH BEING ISSUED IN STRICT CONFIDENCE AND SHALL NOT BE REPRODUCED, COPIED, OR USED FOR ANY PURPOSE WITHOUT SPECIFIC WRITTEN PERMISSION.

SCALE

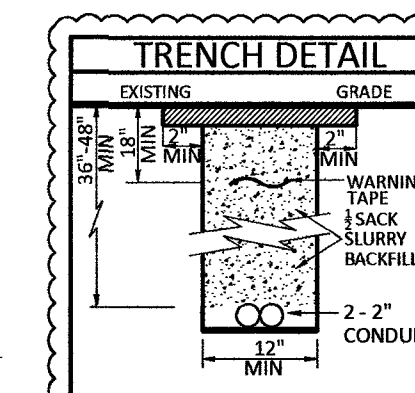
HORIZONTAL: 1"=30'

VERTICAL: NA

MP TO MP

SHEET 12 OF 13

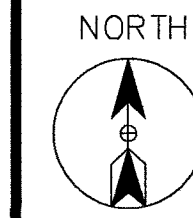
FILE: LSV WATER DISTRICT_REV 07-15-19



RELOT

ROUTE SCHEMATIC

Call at least two full working days before you begin excavation.
811 Know what's below. Call 811 before you dig.



CELL SITE: LSV WATER DISTRICT

CITY OF LAS VEGAS, NEVADA

CLARIFICATION NO. QUANTITY

FIBER TOTALS

FIBER SIZE/LENGTH: 864F/4,050'

MCI COMMUNICATIONS SERVICES, INC.
 OUTSIDE PLANT CONSTRUCTION
 HUB: LSV WASHINGTON DECATUR - CELL SITE: LSV WATER DISTRICT

DATE: 7/15/2019

DRAWN BY: ADADKHAH

REVISIONS

DATE	DESCRIPTION	INITIAL
07/12/2019	<ul style="list-style-type: none"> Updated Index sheet (sheet 1) & footages (sheet 3) Redesign new Underground (sheet 8, 9, 10, 11 & 12) Updated trench details (sheet 8, 10, 11, 12) Added trench details (sheet 9) Updated footages (8, 9, 10, 11, 12) Updated schematic sheet (sheet 13) 	AD

RK 7 7 19

EXCEPT AS MAY BE OTHERWISE PROVIDED BY CONTRACT, THESE DRAWINGS AND SPECIFICATIONS SHALL REMAIN THE PROPERTY OF MCI COMMUNICATIONS SERVICES, INC. BOTH BEING ISSUED IN STRICT CONFIDENCE AND SHALL NOT BE REPRODUCED, COPIED, OR USED FOR ANY PURPOSE WITHOUT SPECIFIC WRITTEN PERMISSION.

SCALE

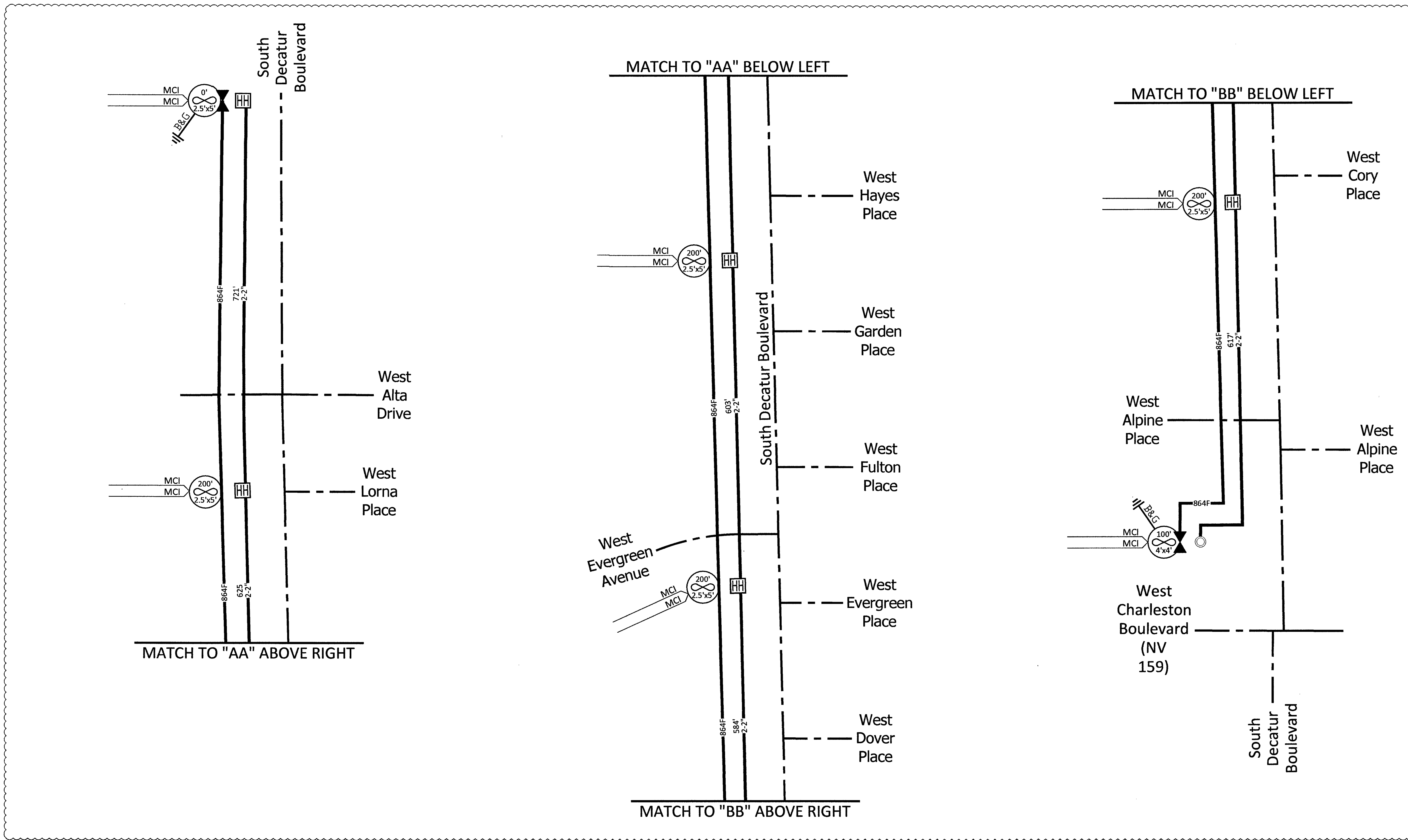
HORIZONTAL: 1"=30'

VERTICAL: NA

MP TO MP

SHEET 13 OF 13

FILE: LSV WATER DISTRICT_REV 07-15-19



*FIELD TO SPECIFY IN / OUT

SITE-SPAN NAME: CELL SITE: LSV WATER DISTRICT									
SITE-SPAN ID: 1708APXY.023									
SEGMENT	FIBER COUNT	TRENCH	BORE	DB/OT	3RD PARTY	VZ OWNED	AERIAL	TOTAL	
911161	864F	3,150'						3,150'	

REPlot