



OUTSIDE PLANT CONSTRUCTION  
FIBER OPTIC CABLE ROUTE  
PROJECT/AFE #: 1708APXZ.012

**EAST ON WEST LAKE MEAD BOULEVARD, FROM EAST OF  
NORTH BUFFALO DRIVE TO ROCK SPRINGS DRIVE, NORTH  
ON ROCK SPRINGS DRIVE  
CITY OF LAS VEGAS, NEVADA**

HUB:TENAYA - CELL SITE:LSV DIABLO  
CONSTRUCTION DRAWING 5/6/2019

MCI metro ACCESS TRANSMISSION SERVICES CORP.  
d/b/a Verizon Access Transmission Services

NOTE: ALL THE ABOVE GROUND UTILITY APPURTENANCES  
SHALL CONFORM TO THE REQUIREMENTS OF CLV UNIFIED  
DEVELOPMENT CODE TITLE 19.06 AND 19.08

**CITY OF LAS VEGAS  
APPROVED FOR CONSTRUCTION**

THIS APPROVAL IS FOR WORK IN CLV R/W & EASEMENT ONLY.  
OBTAINING PERMISSIONS OR EASEMENTS FOR WORK SHOWN ON  
PRIVATE PROPERTY IS THE RESPONSIBILITY OF THE UTILITY.

APPROVAL BY: [Signature] 8 8 19  
DATE

CLV NOTE: PROTECT ALL EXISTING STORM  
DRAIN SYSTEMS AND THE ASSOCIATED  
FACILITIES IN PLACE.

JOB #: LSV DIABLO

VERIZON ONE FIBER LAS VEGAS \ LSV \ TENAYA \ LSV \ DIABLO \ LSV \ CRAB SHACK \ CONSTRUCTION DRAWINGS

6/10/19  
L19-01077









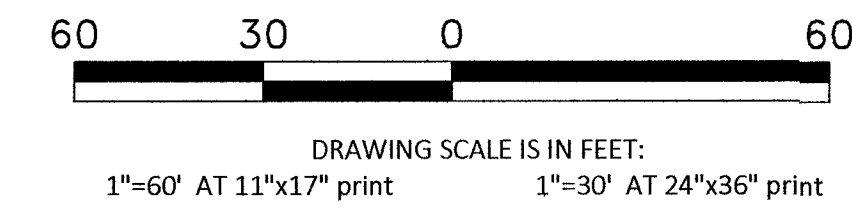






# CONSTRUCTION DRAWING

## CITY OF LAS VEGAS, NEVADA



Call at least two full working days before you begin excavation.

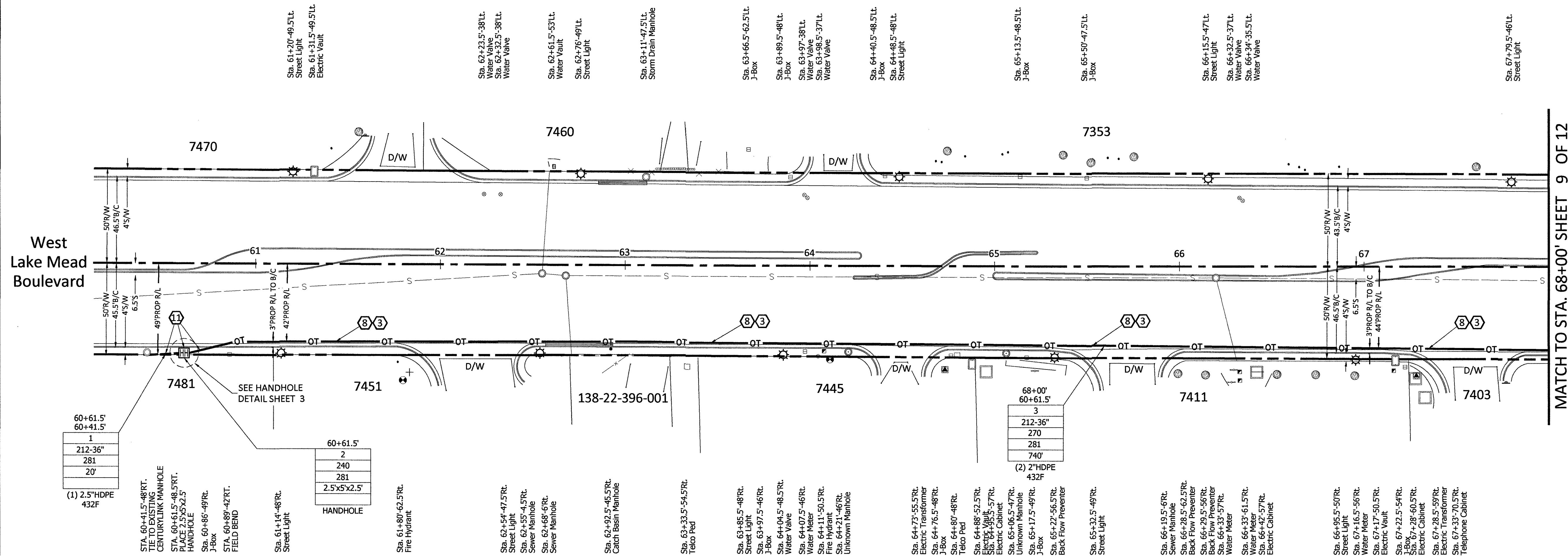


Know what's below.  
Call 811 before you dig.

CELL SITE: LSV DIABLO

CITY OF LAS VEGAS, NEVADA

CLARIFICATION NO.	QUANTITY
SHEET TOTAL	
2" HDPE CONDUIT:	1,486'
2.5" HDPE CONDUIT:	20'
4" HDPE CONDUIT:	-
2' x 3' x 2' HANDHOLE(S):	-
2.5' x 5' x 2.5' HANDHOLE(S):	1
4' x 5' x 4' HANDHOLE(S):	-
MANHOLE(S):	-
AERIAL:	-
VZW CONDUIT:	-
3RD PARTY CONDUIT:	-
TRENCH:	20'
BORE:	740'
TOTAL NEW UG FOOTAGE:	760'
TOTAL FOOTAGE:	760'



MATCH TO STA. 68+00' SHEET 9 OF 12

MCI  
COMMUNICATIONS SERVICES, INC.  
OUTSIDE PLANT CONSTRUCTION  
HUB: TENAYA - CELL SITE: LSV DIABLO

DATE: 5/6/2019

DRAWN BY: ERAMSEY

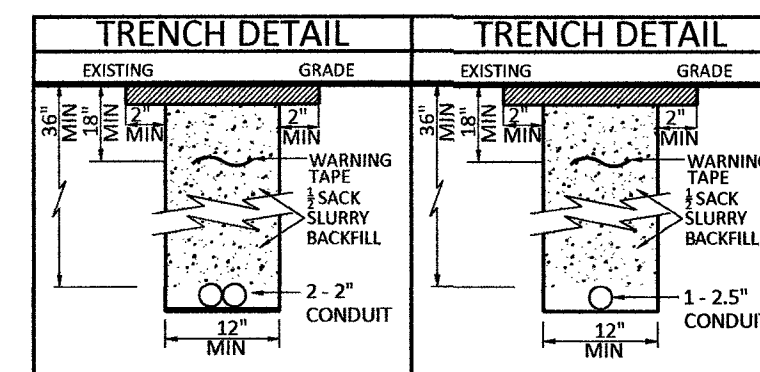
REVISIONS		
DATE	DESCRIPTION	INITIAL

**RTC NOTES:**

BACKFILL AND RIGHT OF WAY RESTORATION SHALL CONFORM TO CLARK COUNTY UNIFORM STANDARD DRAWINGS

(1) 500.1	0 TO 5 YEARS PAVEMENT RESTORATION LONGITUDINAL CUT
(2) 500.2	0 TO 5 YEARS PAVEMENT RESTORATION TRAVERSE CUT
(3) 500.3	OVER 5 YEARS PAVEMENT RESTORATION LONGITUDINAL CUT, GREATER THAN 60' R.O.W
(4) 500.4	OVER 5 YEARS PAVEMENT RESTORATION LONGITUDINAL CUT, 60' R.O.W OR LESS
(5) 500.5	OVER 5 YEARS PAVEMENT RESTORATION TRAVERSE ALL R.O.W WIDTHS
(6) 501	TYPICAL UNDERGROUND UTILITY LOCATIONS IN RESIDENTIAL STREETS 60' OR LESS R.O.W
(7) 501.1	TYPICAL UTILITY UNDERGROUND LOCATIONS IN STREETS WITH GREATER THAN 60' R.O.W
(8) 503	METHOD B FOR RIGID AND FLEXIBLE PIPE TRENCH BACKFILL - PAVED AREAS
(9) 503.1	METHOD A FOR FLEXIBLE PIPE TRENCH BACKFILL - PAVED AREAS
(10) 503.2	METHOD A FOR RIGID PIPE TRENCH BACKFILL - PAVED AREAS
(11) 234	SIDEWALK
(12)	BACKFILL IN UNPAVED AREA AS REQUIRED BY LOCAL CODE OR AS APPROVED BY AGENCY.

210	PLACE CONDUIT
212	PLACE HIGH DENSITY POLYETHYLENE (HDPE)
240	PLACE HANDHOLE
250	PLACE MANHOLE
270	REMOVE AND RESTORE ASPHALT
280	REMOVE AND RESTORE CONCRETE
281	REMOVE AND RESTORE SIDEWALK
282	REMOVE AND RESTORE CURBING
410	PULL CABLE
411	PULL THROUGH DUCT (INNERDUCT)
520	PLACE AERIAL CABLE
630	DIRECTIONAL BORE



SCALE

HORIZONTAL: 1"=30'

VERTICAL: NA

MP \_\_\_\_\_ TO MP \_\_\_\_\_

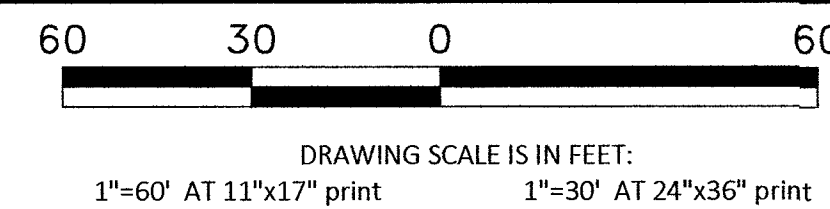
SHEET 8 OF 12

FILE: LSV DIABLO

M:\VERSION ONE\FIBER\LAS VEGAS\TENAYA\LSV DIABLO LSV CRAB SHACK\CONSTRUCTION DRAWINGS

# CONSTRUCTION DRAWING

## CITY OF LAS VEGAS, NEVADA



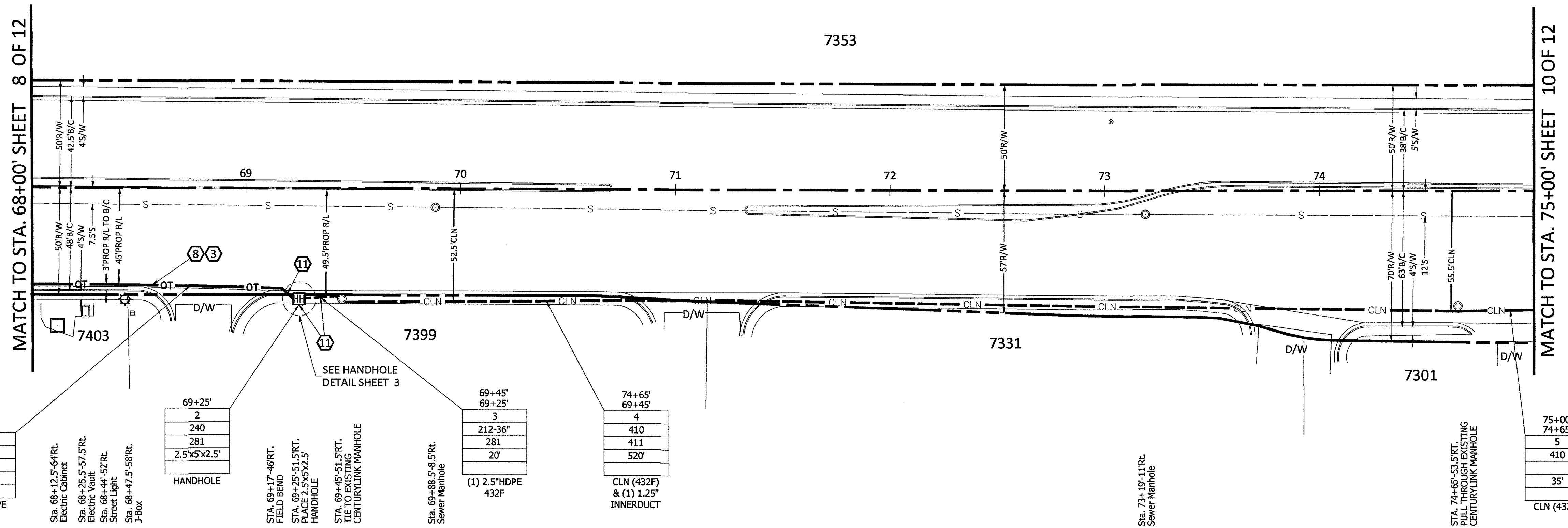
Call at least two full working days before you begin excavation.

**811** Know what's below. Call 811 before you dig.

CELL SITE: LSV DIABLO

CITY OF LAS VEGAS, NEVADA

CLARIFICATION NO.	QUANTITY
SHEET TOTAL	
2" HDPE CONDUIT:	258'
2.5" HDPE CONDUIT:	20'
4" HDPE CONDUIT:	-
2' x 3' x 2' HANDHOLE(S):	-
2.5' x 5' x 2.5' HANDHOLE(S):	1
4' x 5' x 4' HANDHOLE(S):	-
MANHOLE(S):	-
AERIAL:	-
VZW CONDUIT:	-
3RD PARTY CONDUIT:	555'
TRENCH:	20'
BORE:	126'
TOTAL NEW UG FOOTAGE:	146'
TOTAL FOOTAGE:	701'



69+25'
68+00'
1
212-36"
270
281
126'
(2) 2" HDPE
432F

Sta. 68+12.5'-64\"/>

Sta. 68+25'-57.5\"/>

Sta. 69+44'-52\"/>

Sta. 68+47.5'-58\"/>

69+25'
2
240
281
2.5'x5'x2.5'
HANDHOLE

STA. 69+17'-46\"/>

STA. 69+25'-51.5\"/>

STA. 69+45'-51\"/>

69+45'
69+25'
3
212-36"
281
20'
(1) 2.5" HDPE
432F

Sta. 69+88.5'-8.5\"/>

CLN (432F) & (1) 1.25" INNERDUCT

74+65'
69+45'
4
410
411
520'
CLN (432F) & (1) 1.25" INNERDUCT

Sta. 73+19'-11\"/>

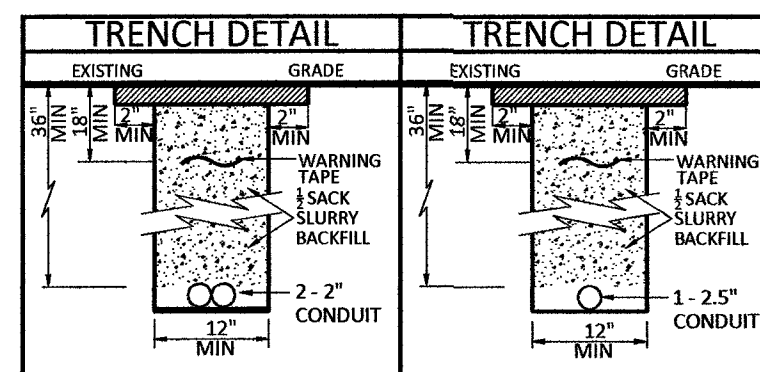
75+00'
74+65'
5
410
35'
CLN (432F)

**RTC NOTES:**

BACKFILL AND RIGHT OF WAY RESTORATION SHALL CONFORM TO CLARK COUNTY UNIFORM STANDARD DRAWINGS

(1) 500.1	0 TO 5 YEARS PAVEMENT RESTORATION LONGITUDINAL CUT
(2) 500.2	0 TO 5 YEARS PAVEMENT RESTORATION TRAVERSE CUT
(3) 500.3	OVER 5 YEARS PAVEMENT RESTORATION LONGITUDINAL CUT, GREATER THAN 60' R.O.W
(4) 500.4	OVER 5 YEARS PAVEMENT RESTORATION LONGITUDINAL CUT, 60' R.O.W OR LESS
(5) 500.5	OVER 5 YEARS PAVEMENT RESTORATION TRAVERSE ALL R.O.W WIDTHS
(6) 501	TYPICAL UNDERGROUND UTILITY LOCATIONS IN RESIDENTIAL STREETS 60' OR LESS R.O.W
(7) 501.1	TYPICAL UTILITY UNDERGROUND LOCATIONS IN STREETS WITH GREATER THAN 60' R.O.W
(8) 503	METHOD B FOR RIGID AND FLEXIBLE PIPE TRENCH BACKFILL - PAVED AREAS
(9) 503.1	METHOD A FOR FLEXIBLE PIPE TRENCH BACKFILL - PAVED AREAS
(10) 503.2	METHOD A FOR RIGID PIPE TRENCH BACKFILL - PAVED AREAS
(11) 234	SIDEWALK
(12) BACKFILL	IN UNPAVED AREA AS REQUIRED BY LOCAL CODE OR AS APPROVED BY AGENCY.

- 210 PLACE CONDUIT
- 212 PLACE HIGH DENSITY POLYETHYLENE (HDPE)
- 240 PLACE HANDHOLE
- 250 PLACE MANHOLE
- 270 REMOVE AND RESTORE ASPHALT
- 280 REMOVE AND RESTORE CONCRETE
- 281 REMOVE AND RESTORE SIDEWALK
- 282 REMOVE AND RESTORE CURBING
- 410 PULL CABLE
- 411 PULL THROUGH DUCT (INNERDUCT)
- 520 PLACE AERIAL CABLE
- 630 DIRECTIONAL BORE



DATE: 5/6/2019

DRAWN BY: ERAMSEY

REVISIONS

DATE	DESCRIPTION	INITIAL

EXCEPT AS MAY BE OTHERWISE PROVIDED BY CONTRACT, THESE DRAWINGS AND SPECIFICATIONS SHALL REMAIN THE PROPERTY OF MCI COMMUNICATIONS SERVICES, INC. BOTH BEING ISSUED IN STRICT CONFIDENCE AND SHALL NOT BE REPRODUCED, COPIED, OR USED FOR ANY PURPOSE WITHOUT SPECIFIC WRITTEN PERMISSION.

SCALE

HORIZONTAL: 1"=30'

VERTICAL: NA

MP \_\_\_\_\_ TO MP \_\_\_\_\_

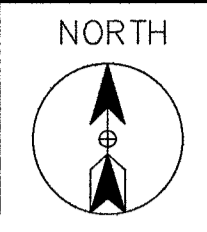
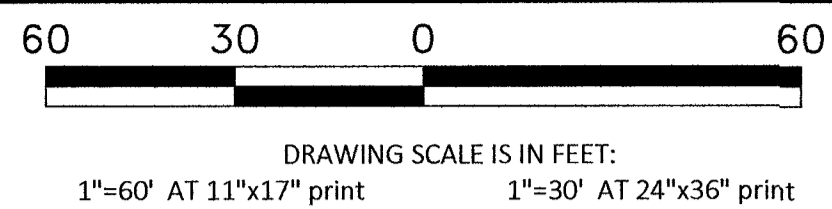
SHEET 9 OF 12

FILE: LSV DIABLO

M:\VERIZON ONE FIBER\LAS VEGAS\LSV DIABLO LSV CRAB SHACK\CONSTRUCTION DRAWINGS

# CONSTRUCTION DRAWING

## CITY OF LAS VEGAS, NEVADA



Call at least two full working days before you begin excavation.

**811** Know what's below. Call 811 before you dig.

CELL SITE: LSV DIABLO

CITY OF LAS VEGAS, NEVADA

CLARIFICATION NO.	QUANTITY
SHEET TOTAL	
2" HDPE CONDUIT:	6'
2.5" HDPE CONDUIT:	14'
4" HDPE CONDUIT:	-
2' x 3' x 2' HANDHOLE(S):	-
2.5' x 5' x 2.5' HANDHOLE(S):	1
4' x 5' x 4' HANDHOLE(S):	-
HANDHOLE(S):	-
AERIAL:	-
VZV CONDUIT:	-
3RD PARTY CONDUIT:	886'
TRENCH:	14'
TOTAL NEW UG FOOTAGE:	14'
TOTAL FOOTAGE:	900'

MCI COMMUNICATIONS SERVICES, INC.

OUTSIDE PLANT CONSTRUCTION

HUB: TENAYA - CELL SITE: LSV DIABLO

DATE: 5/6/2019

DRAWN BY: ERAMSEY

REVISIONS		
DATE	DESCRIPTION	INITIAL

EXCEPT AS MAY BE OTHERWISE PROVIDED BY CONTRACT, THESE DRAWINGS AND SPECIFICATIONS SHALL REMAIN THE PROPERTY OF MCI COMMUNICATIONS SERVICES, INC. BOTH BEING ISSUED IN STRICT CONFIDENCE AND SHALL NOT BE REPRODUCED, COPIED, OR USED FOR ANY PURPOSE WITHOUT SPECIFIC WRITTEN PERMISSION.

SCALE

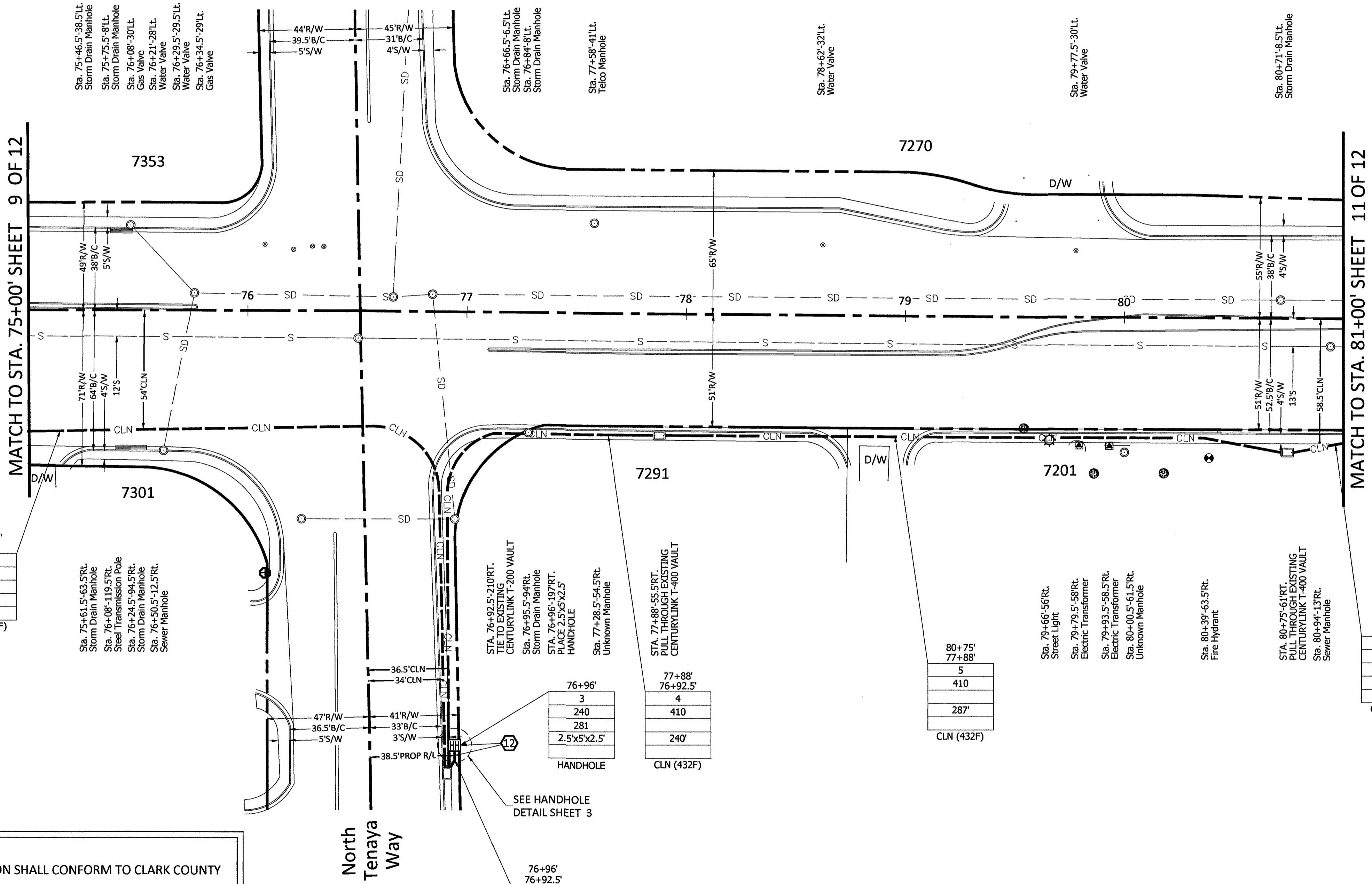
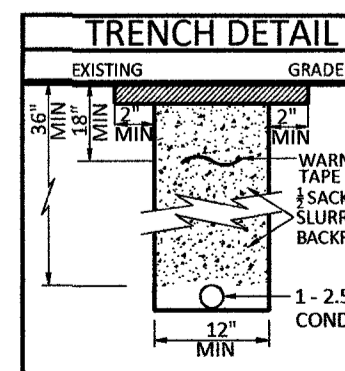
HORIZONTAL: 1"=30'

VERTICAL: NA

MP \_\_\_\_\_ TO MP \_\_\_\_\_

SHEET 10 OF 12

FILE: LSV DIABLO



- 210 PLACE CONDUIT
- 212 PLACE HIGH DENSITY POLYETHYLENE (HDPE)
- 240 PLACE HANDHOLE
- 250 PLACE MANHOLE
- 270 REMOVE AND RESTORE ASPHALT
- 280 REMOVE AND RESTORE CONCRETE
- 291 REMOVE AND RESTORE SIDEWALK
- 292 REMOVE AND RESTORE CURBING
- 410 PULL CABLE
- 411 PULL THROUGH DUCT (INNERDUCT)
- 520 PLACE AERIAL CABLE
- 630 DIRECTIONAL BORE

**RTC NOTES:**

BACKFILL AND RIGHT OF WAY RESTORATION SHALL CONFORM TO CLARK COUNTY UNIFORM STANDARD DRAWINGS

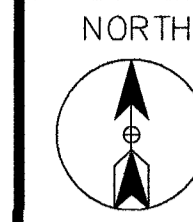
(1)	500.1	0 TO 5 YEARS PAVEMENT RESTORATION LONGITUDINAL CUT
(2)	500.2	0 TO 5 YEARS PAVEMENT RESTORATION TRAVERSE CUT
(3)	500.3	OVER 5 YEARS PAVEMENT RESTORATION LONGITUDINAL CUT, GREATER THAN 60' R.O.W
(4)	500.4	OVER 5 YEARS PAVEMENT RESTORATION LONGITUDINAL CUT, 60' R.O.W OR LESS
(5)	500.5	OVER 5 YEARS PAVEMENT RESTORATION TRAVERSE ALL R.O.W WIDTHS
(6)	501	TYPICAL UNDERGROUND UTILITY LOCATIONS IN RESIDENTIAL STREETS 60' OR LESS R.O.W
(7)	501.1	TYPICAL UTILITY UNDERGROUND LOCATIONS IN STREETS WITH GREATER THAN 60' R.O.W
(8)	503	METHOD B FOR RIGID AND FLEXIBLE PIPE TRENCH BACKFILL - PAVED AREAS
(9)	503.1	METHOD A FOR FLEXIBLE PIPE TRENCH BACKFILL - PAVED AREAS
(10)	503.2	METHOD A FOR RIGID PIPE TRENCH BACKFILL - PAVED AREAS
(11)	234	SIDEWALK
(12)	BACKFILL IN UNPAVED AREA AS REQUIRED BY LOCAL CODE OR AS APPROVED BY AGENCY.	

M:\VERSION ONE\FIBER\LAS VEGAS\LSV TENAYA\LSV DIABLO LSV CRAB SHACK\CONSTRUCTION DRAWINGS



# ROUTE SCHEMATIC

Call at least two full working days before you begin excavation.  
**811** Know what's below.  
 Call 811 before you dig.



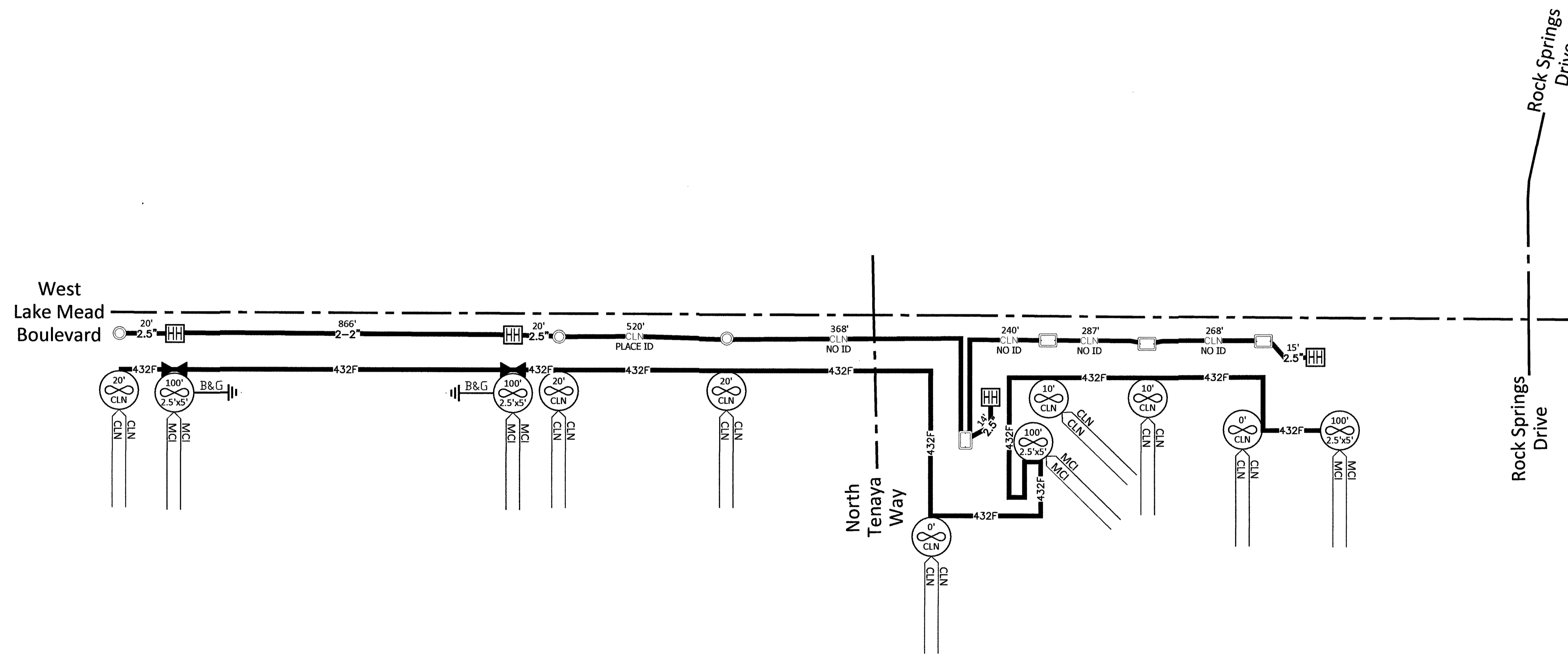
CELL SITE: LSV DIABLO

CITY OF LAS VEGAS, NEVADA

CLARIFICATION NO. QUANTITY

FIBER TOTALS

FIBER SIZE/LENGTH: 432F/3,127'



MCI  
 COMMUNICATIONS SERVICES, INC.  
 OUTSIDE PLANT CONSTRUCTION  
 HUB: TENAYA - CELL SITE: LSV DIABLO

DATE: 5/6/2019  
 DRAWN BY: ERAMSEY

REVISIONS		
DATE	DESCRIPTION	INITIAL

EXCEPT AS MAY BE OTHERWISE PROVIDED BY CONTRACT, THESE DRAWINGS AND SPECIFICATIONS SHALL REMAIN THE PROPERTY OF MCI COMMUNICATIONS SERVICES, INC. BOTH BEING ISSUED IN STRICT CONFIDENCE AND SHALL NOT BE REPRODUCED, COPIED, OR USED FOR ANY PURPOSE WITHOUT SPECIFIC WRITTEN PERMISSION.

SCALE  
 HORIZONTAL: 1"=30'  
 VERTICAL: NA  
 MP \_\_\_\_\_ TO MP \_\_\_\_\_  
 SHEET 12 OF 12

FILE: LSV DIABLO

SITE-SPAN NAME: CELL SITE: LSV DIABLO									
SITE-SPAN ID: 1708APXZ.012									
FQID	SEGMENT	FIBER COUNT	TRENCH	BORE	DB/IOT	3RD PARTY	VZ OWNED	AERIAL	TOTAL
FIB: BUR::56001423	914003	432F	40'	866'	'	'	'	'	906'
FIB: BUR::56001482	914008	432F	15'	'	'	'	'	'	15'
FIB: BUR::56001482	914010	432F	'	'	'	1,683'	'	'	1,683'
FIB: BUR::56001482	914177	432F	14'	'	'	'	'	'	14'

M:\VERIZON ONE FIBER\LAS VEGAS\LSV TENAYA\LSV DIABLO LSV CRAB SHACK\CONSTRUCTION DRAWINGS