



OUTSIDE PLANT CONSTRUCTION
FIBER OPTIC CABLE ROUTE

PROJECT/AFE #: 1711BOPK.1

WEST ELKHORN ROAD & NORTH JONES BOULEVARD

CITY OF LAS VEGAS, NEVADA

HUB: LSV ALLEN - CELL SITE: LSV ALLEN BACK HAUL - 905026


CONSTRUCTION DRAWING 4/23/2019

MCI metro ACCESS TRANSMISSION SERVICES CORP.
d/b/a Verizon Access Transmission Services

NOTE: ALL THE ABOVE GROUND UTILITY APPURTENANCES SHALL CONFORM TO THE REQUIREMENTS OF CLV UNIFIED DEVELOPMENT CODE TITLE 19.06 AND 19.08

CITY OF LAS VEGAS
APPROVED FOR CONSTRUCTION

THIS APPROVAL IS FOR WORK IN CLV R/W & EASEMENT ONLY. OBTAINING PERMISSIONS OR EASEMENTS FOR WORK SHOWN ON PRIVATE PROPERTY IS THE RESPONSIBILITY OF THE UTILITY.

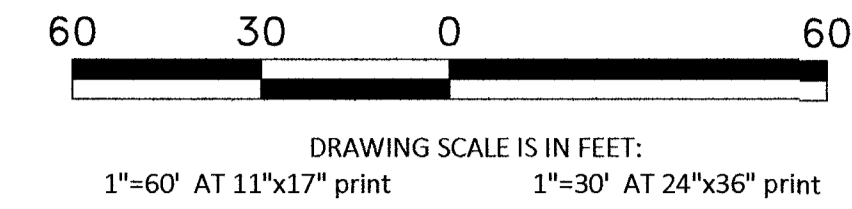
APPROVAL BY:  100V9783-FIB DATE 6 25 19

CLV NOTE: PROTECT ALL EXISTING STORM DRAIN SYSTEMS AND THE ASSOCIATED FACILITIES IN PLACE.

6/11/19
LSV-00838

CONSTRUCTION DRAWING

CITY OF LAS VEGAS, NEVADA



Call at least two full working days before you begin excavation.

811 Know what's below. Call 811 before you dig.

CELL SITE: LSV ALLEN BACK HAUL - 905026

CITY OF LAS VEGAS, NEVADA

CLARIFICATION NO.	QUANTITY
SHEET TOTAL	
2" HDPE CONDUIT:	728'
2.5" HDPE CONDUIT:	-
4" HDPE CONDUIT:	-
2' x 3' x 2' HANDHOLE(S):	-
2.5' x 5' x 2.5' HANDHOLE(S):	1
4' x 4' x 4' MANHOLE(S):	1
MANHOLE(S):	-
AERIAL:	-
VZW CONDUIT:	-
3RD PARTY CONDUIT:	-
TRENCH:	-
BORE:	358'
TOTAL NEW UG FOOTAGE:	358'
TOTAL FOOTAGE:	358'

MCI COMMUNICATIONS SERVICES, INC.
OUTSIDE PLANT CONSTRUCTION

HUB: LSV ALLEN - CELL SITE: LSV ALLEN BACK HAUL - 905026

DATE: 4/23/2019

DRAWN BY: JJAMES

REVISIONS		
DATE	DESCRIPTION	INITIAL

EXCEPT AS MAY BE OTHERWISE PROVIDED BY CONTRACT, THESE DRAWINGS AND SPECIFICATIONS SHALL REMAIN THE PROPERTY OF MCI COMMUNICATIONS SERVICES, INC. BOTH BEING ISSUED IN STRICT CONFIDENCE AND SHALL NOT BE REPRODUCED, COPIED, OR USED FOR ANY PURPOSE WITHOUT SPECIFIC WRITTEN PERMISSION.

SCALE

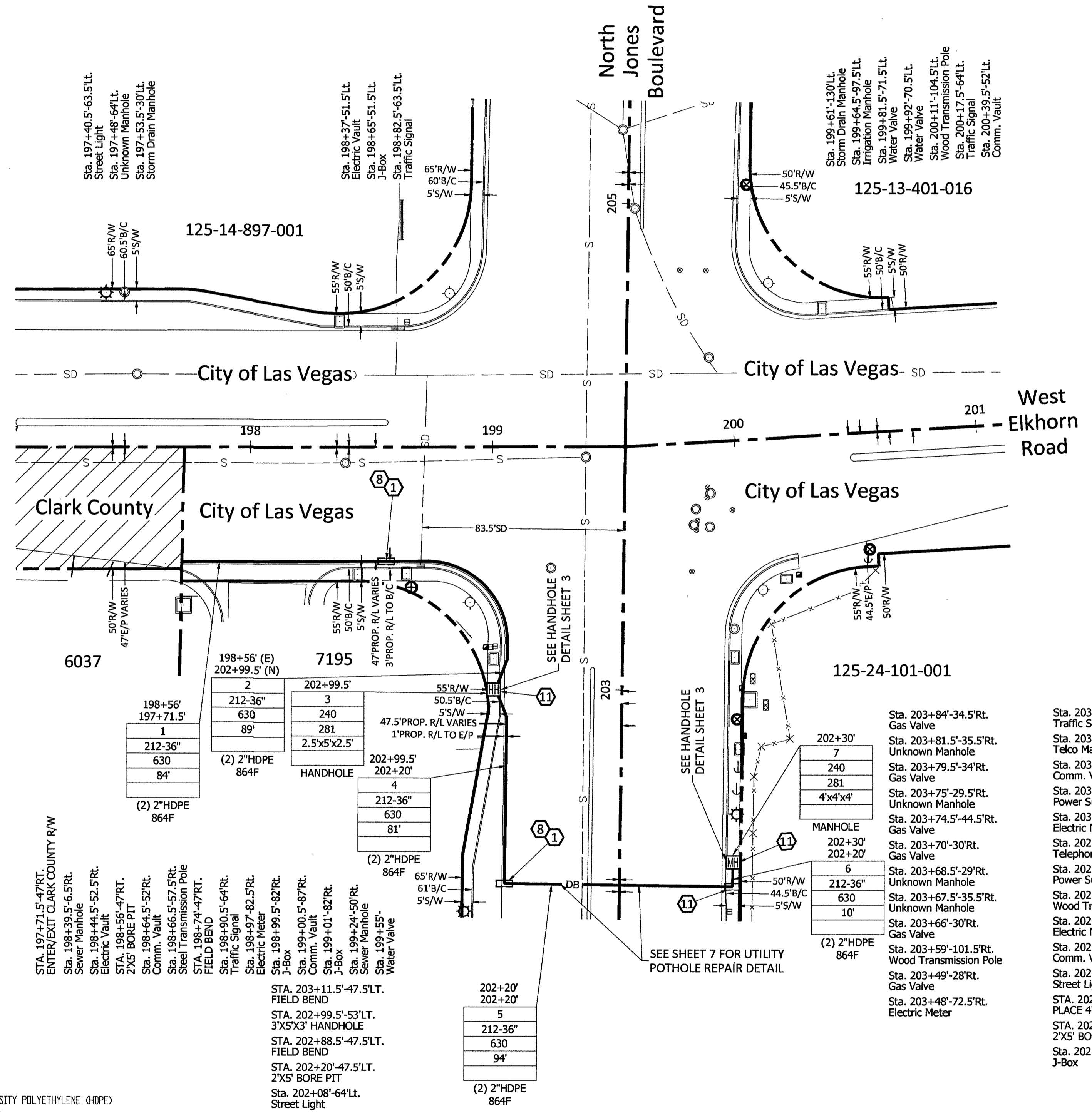
HORIZONTAL: 1"=30'

VERTICAL: NA

MP TO MP

SHEET 8 OF 9

FILE: LSV ALLEN BACK HAUL - 905026

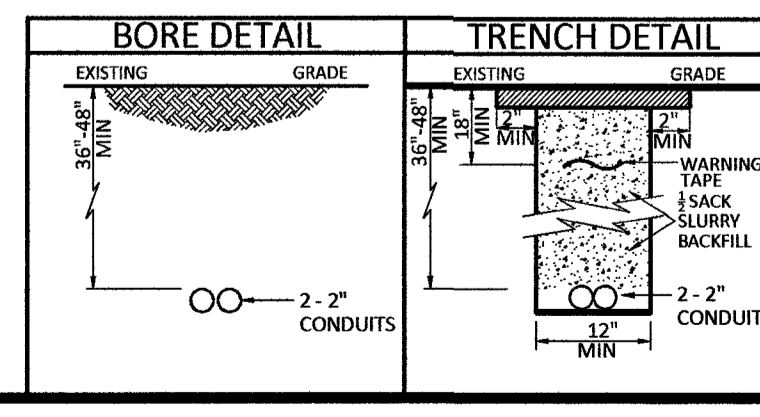


RTC NOTES:

BACKFILL AND RIGHT OF WAY RESTORATION SHALL CONFORM TO CLARK COUNTY UNIFORM STANDARD DRAWINGS

(1)	500.1	0 TO 5 YEARS PAVEMENT RESTORATION LONGITUDINAL CUT
(2)	500.2	0 TO 5 YEARS PAVEMENT RESTORATION TRAVERSE CUT
(3)	500.3	OVER 5 YEARS PAVEMENT RESTORATION LONGITUDINAL CUT. GREATER THAN 60' R.O.W
(4)	500.4	OVER 5 YEARS PAVEMENT RESTORATION LONGITUDINAL CUT. 60' R.O.W OR LESS
(5)	500.5	OVER 5 YEARS PAVEMENT RESTORATION TRAVERSE ALL R.O.W WIDTHS
(6)	501	TYPICAL UNDERGROUND UTILITY LOCATIONS IN RESIDENTIAL STREETS 60' OR LESS R.O.W
(7)	501.1	TYPICAL UTILITY UNDERGROUND LOCATIONS IN STREETS WITH GREATER THAN 60' R.O.W
(8)	503	METHOD B FOR RIGID AND FLEXIBLE PIPE TRENCH BACKFILL - PAVED AREAS
(9)	503.1	METHOD A FOR FLEXIBLE PIPE TRENCH BACKFILL - PAVED AREAS
(10)	503.2	METHOD A FOR RIGID PIPE TRENCH BACKFILL - PAVED AREAS
(11)	234	SIDEWALK
(12)		BACKFILL IN UNPAVED AREA AS REQUIRED BY LOCAL CODE OR AS APPROVED BY AGENCY.

210	PLACE CONDUIT
212	PLACE HIGH DENSITY POLYETHYLENE (HDPE)
240	PLACE HANDHOLE
250	PLACE MANHOLE
270	REMOVE AND RESTORE ASPHALT
280	REMOVE AND RESTORE CONCRETE
281	REMOVE AND RESTORE SIDEWALK
282	REMOVE AND RESTORE CURBING
283	REMOVE AND RESTORE DIRT/LANDSCAPING
410	PULL CABLE
411	PULL THROUGH DUCT (INNERDUCT)
520	PLACE AERIAL CABLE
630	DIRECTIONAL BORE

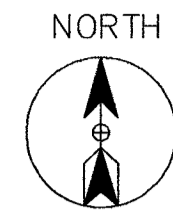


M:\VERSION ONE\FIBER\LAS VEGAS\LSV ALLEN BACK HAUL\905026 - LSV ALLEN TO LSV QUAL VIEW\CONSTRUCTION DRAWINGS

09/10

ROUTE SCHEMATIC

Call at least two full working days before you begin excavation.
811 Know what's below. Call 811 before you dig.



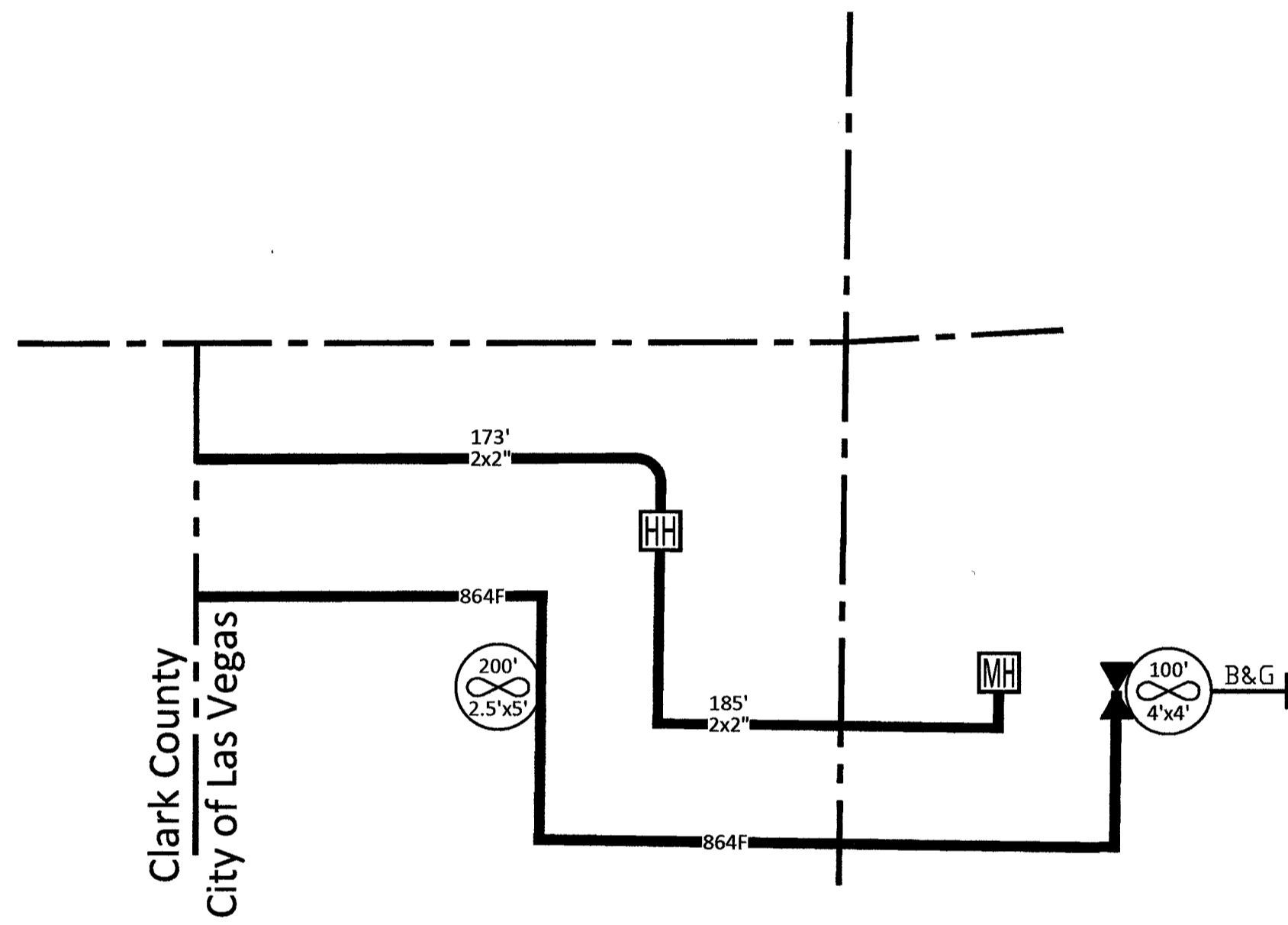
CELL SITE: LSV ALLEN BACK HAUL - 905026

CITY OF LAS VEGAS, NEVADA

CLARIFICATION NO. QUANTITY

FIBER TOTALS

FIBER SIZE/LENGTH: 864F/658'



MCI COMMUNICATIONS SERVICES, INC.

OUTSIDE PLANT CONSTRUCTION

HUB: LSV ALLEN - CELL SITE: LSV ALLEN BACK HAUL - 905026

DATE: 4/23/2019

DRAWN BY: JJAMES

REVISIONS

DATE	DESCRIPTION	INITIAL

EXCEPT AS MAY BE OTHERWISE PROVIDED BY CONTRACT, THESE DRAWINGS AND SPECIFICATIONS SHALL REMAIN THE PROPERTY OF MCI COMMUNICATIONS SERVICES, INC. BOTH BEING ISSUED IN STRICT CONFIDENCE AND SHALL NOT BE REPRODUCED, COPIED, OR USED FOR ANY PURPOSE WITHOUT SPECIFIC WRITTEN PERMISSION.

SCALE

HORIZONTAL: 1"=30'

VERTICAL: NA

MP TO MP

SHEET 9 OF 9

FILE: LSV ALLEN BACK HAUL - 905026

SITE-SPAN NAME: CELL SITE: LSV ALLEN BACK HAUL - 905026
 SITE-SPAN ID: 1711B0PK.1

SEGMENT	FIBER COUNT	TRENCH	BORE	DB/OT	3RD PARTY	VZ OWNED	AERIAL	TOTAL
905026	864F		358'					358'

A:\VERIZON ONE\FIBER\LAS VEGAS\LSV ALLEN\BACK HAUL\905026 - LSV ALLEN TO LSV QUAIL VIEW\CONSTRUCTION DRAWINGS

10/10